

The Royal Agricultural Society of N.S.W.

1956

FAT STOCK AND CARCASS SHOW AND SALES

To be held on

THE SHOWGROUND, MOORE PARK
SYDNEY

ENTRIES CLOSE MONDAY, 23rd APRIL

1956

25th May (Judging on Hoof—Showground)

25th May (Sale of Steers on Hoof—Showground)

29th May (Judging of Carcasses entered in Class 13—Abattoir)

31st May (Judging of Carcasses of Steers entered in Classes other
than Class 13—Abattoir)

31st May (Display and Inspection of Carcasses—Abattoir)

Section 10—AGRICULTURE

Committee:

H. C. M. See (Chairman)
E. K. Bowman
W. A. Chaffey, M.L.A.
L. S. Clark
Lt.-Col. T. E. Irwin

T. B. Macfarlane
W. A. Meares
A. McCorquodale
C. A. M. Ross

H. R. Ross
E. A. Southee
H. J. Tulloch
Hon. Sir Graham Waddell

Steward-in-Chief:

H. C. M. See

Assistant Steward-in-Chief:

A. McCorquodale

Commonwealth DISTRICT COMPETITION

Exhibits:

Judges:

Stewards:

1. DAIRY PRODUCE—

Butter

J. T. Dickson

W. A. Chaffey, M.L.A.
A. C. Small
F. A. Vernon
F. Wilkinson
D. I. Gillies
J. D. L. McGibbon

Cheese

H. E. Silversides

2. FOODS—

Hams, Bacon, Lard, Beef and
Mutton Dripping

N. A. Steel,
P.O. Box 426,
Lismore, N.S.W.

W. A. Meares
J. R. Dains
G. P. Fisher

Eggs

S. J. Wilkins

W. H. Bruce
A. McCorquodale, Junr.
R. B. Gulliford

Honey

A. A. Clemson

3. FRUITS—

Pome

H. Broadfoot

Dr. F. Bowman
E. C. Whittaker
J. V. McGrath

Citrus

E. C. Levitt

Tropical

H. W. Eastwood

Nuts and Grapes

J. D. Bryden

Stone Fruits

D. Leigh

Miscellaneous

J. Ballantyne

Dried and Crystallised

K. D. McGillivray

Preserved Fruits

Mrs. D. J. Edwards,
Friedale Stud,
Griffith, N.S.W.

L. F. Mandelson
W. Greenhalgh
C. J. Horth
S. M. Sykes
A. E. Lloyd

Preserved Vegetables, Pickles,
etc.

Miss M. Beale,
East Sydney Technical College,
Darlinghurst, Sydney.

D. J. Pulsford

Preserved Jams, Jellies, etc.

A. Davies,
11 May-st.,
Eastwood, Sydney.

T. F. Upperton

4. VEGETABLES—

Other than Ginger

A. C. Orman
N. S. Shirlow
R. T. Spencer

Dr. R. Gottl
E. Darley
G. McMaster
J. McClure
H. C. Stening

Ginger

W. H. Poggendorff

Sec. 10—AGRICULTURE (Continued)

| | | | |
|---|---|---|--|
| 5. GRAIN ETC.— | | | |
| Wheat | S. Carberry, Cadarga, Kiandool Siding, N.S.W. J. A. O'Reilly, P.O. Box 105, Gunnedah, N.S.W. Dr. A. T. Pugsley, Agricultural College, Wagga, N.S.W. | E. S. Clayton L. S. Harrison S. C. Hodgson | |
| Barley, Oats, Rye | G. Nicholson | J. W. Boyle J. Wall W. T. Atkinson J. M. Pitt | |
| Maize, Sorghum (Sweet) Sorghum (Grain) | J. B. Noonan W. D. Kerle 241 Main-st., Thirroul, N.S.W. | | |
| Edible Dry Shell Beans Rice | A. C. Orman W. H. Poggenдорff | T. E. Kitamura | |
| 6. WINES— | L. Barrett, 14 Lucretia-av., Longueville, Sydney. | H. J. Tulloch | |
| 7. TOBACCO— | L. F. Gilmour, G.P.O. Box 145, Sydney. | R. A. Lewin | |
| 8. STOCK FODDERS— | | | |
| Oaten, Wheaten and Lucerne Hay, Chaff, Sheaves of Hay | J. Crawford, Avoca-st., Randwick, Sydney. | C. E. Jack H. R. Richardson | |
| Green Maize, Miscellaneous Fodders | J. L. Green | K. G. Carn M. J. E. Squire | |
| Pumpkins, Squashes, Melons, Stock Roots | F. C. Morris | A. Johnson J. Moraghan | |
| 9. COMMERCIAL FIBRES AND TROPICAL PRODUCTS— | | | |
| Cotton Broom Millet Sugar Cane | A. S. Peterson W. D. Kerle E. G. Baber, 1 O'Connell-st., Sydney. | E. J. Waring J. N. Whittot K. Maxwell | |
| 10. GRASSES, CLOVERS, AND OTHER HERBAGE— | C. K. Vears | K. Green F. Hartridge H. Rowlands | |
| 11. WOOL— | | | |
| Merino | H. J. Monckton, "Riversdale," Bredbo, N.S.W. | H. R. Ross E. A. Elliott F. M. King B. McCormack K. T. Payno M. Tucker | |
| British Breeds, etc. | J. Brassil, 23 Macquarie-pl., Sydney. A. K. Cantrill | | |
| 12. EFFECTIVE ARRANGEMENT AND ATTRACTIVENESS OF GENERAL DECORATIONS | Mrs. D. J. Newcombe, 6 Rivers-rd., Bellevue Hill, Sydney. F. A. Somerville, 26 Kippax-st., Sydney. R. J. K. Synott | W. A. Chaffey W. A. Mearns H. Parry-Brown | |

Sec. 10—AGRICULTURE (Continued)

SCALE OF JUDGING POINTS

| | | | |
|---|---------|------|--|
| 1. DAIRY PRODUCE (970)— | | | |
| Butter: | | | |
| Flavour | 325 | | |
| Texture | 175 | | |
| Condition | 125-625 | | |
| Correct ticketing | 10 | | |
| (Two boxes of butter from each of three factories to be submitted for judging purposes. The name of the factory and the registered factory number must be stated on each box. Dummy boxes may be used for exhibits as well as for decorative purposes. Dummies may include 1lb. prints. Butter shall be judged in Cold Store—See Regulation 10). | | | |
| Cheese: | | | |
| Flavour | 165 | | |
| Texture and colour | 100 | | |
| Finish | 60-325 | | |
| Correct ticketing | 10 | -970 | |
| (Four Cheeses, with a maximum weight of 16lb., to be staged for judging purposes. Dummies not permitted for exhibition). | | | |
| 2. FOODS (748)— | | | |
| Hams and Bacon: | | | |
| Flavour | 90 | | |
| Colour | 50 | | |
| Proportion of fat and lean | 50 | | |
| Texture and firmness | 30 | | |
| Conformation | 30 | | |
| Finish | 30-20 | | |
| Correct ticketing | 10 | | |
| (Two each of sides, flitches, middles and rolls of Bacon and Hams to be submitted and judged as a collection. One piece to be cut for flavour and colour. Hams and Bacon Exhibits will be judged in the Dairy Hall—See Regulation 10). | | | |
| Eggs: (Hen, 2 grades). | | | |
| Freshness | 75 | | |
| Size and type | 25 | | |
| Texture of shell | 25 | | |
| Cleanliness and Bloom | 25 | | |
| Uniformity of size, shape and colour | 35-185 | | |
| Correct ticketing | 19 | | |
| (For judging purposes the grades of hen eggs shall be—First quality grade, minimum 1½ oz. in weight; first quality medium grade, minimum 1½ oz. but not more than 1½ oz. in weight. Six dozen of each grade of hen eggs to be staged and clearly defined for judging purposes. Additional eggs may be used for display purposes. Each grade to consist of three dozen white and three dozen brown eggs). | | | |
| Extracted Honey (Liquid): | | | |
| Flavour | 14 | | |
| Density | 14 | | |
| Colour | 14 | | |
| Aroma | 5 | | |
| Clearness | 5 | | |
| Brightness | 3-55 | | |
| Correct ticketing | 3 | | |
| (For judging purposes 12 standard 16 oz. round or square glass jars made from two varieties of ground flora [six jars from each variety] and 24 standard 16 oz. round or square glass jars made from four varieties of eucalypt [six jars from each variety], to be exhibited). Four jars of Extracted Honey (Liquid) from eucalypts and two jars of Extracted Honey (Liquid) made from non-eucalypts to be made available for judging on the table prior to staging. | | | |
| Extracted Honey (Granulated): | | | |
| Evenness of Grain | 17 | | |
| Flavour | 17 | | |
| Firmness | 15 | | |
| Colour | 5-54 | | |
| Correct ticketing | 3 | | |
| (For judging purposes 6 standard 16 oz. round or square glass jars each of coarse honey and fine honey to be exhibited). One jar of each granulated variety to be made available for judging on the table prior to staging. | | | |
| Comb Honey (in Sections): | | | |
| Fullness | 8 | | |
| Colour and Cappings | 8 | | |
| Evenness | 5 | | |
| General Appearance | 5-26 | | |
| Correct ticketing | 3 | | |
| (For judging purposes six sections to be exhibited). | | | |
| Comb Honey (in Frames): | | | |
| Fullness | 8 | | |
| Colour and Cappings | 8 | | |
| Evenness | 5 | | |
| General Appearance | 5-26 | | |
| Correct ticketing | 3 | | |
| (For judging purposes six Frames to be exhibited). | | | |
| Beeswax—White and yellow: | | | |
| Colour | 4 | | |
| Clearness | 4 | | |
| Tenacity | 3 | | |
| General Appearance | 3 | | |
| Aroma | 3-17 | | |
| Correct ticketing | 3 | | |
| (For judging purposes 2lb. each of white and yellow to be exhibited). One block each of white and yellow to be made available for preliminary judging prior to staging. | | | |
| Lard, Beef, and Mutton Dripping: | | | |
| Flavour | 15 | | |
| Colour | 15 | | |
| Texture | 15 | | |
| Finish and Appearance | 15-60 | | |
| Correct ticketing | 10 | -748 | |
| (Exhibits shall comprise 1lb. quantities packed in 1lb. hygienic cardboard containers. For judging purposes 6lb. each of Lard, Beef, and Mutton Dripping to be staged. Exhibits will be judged in the Dairy Hall). | | | |
| 3. WINES (110)— | | | |
| Sweet Red: | | | |
| Condition and colour | 5 | | |
| Bouquet | 10 | | |
| Flavour | 10-25 | | |
| Sweet White: | | | |
| Condition and colour | 5 | | |
| Bouquet | 10 | | |
| Flavour | 10-25 | | |
| Light Dry Red: | | | |
| Condition and colour | 5 | | |
| Bouquet | 10 | | |
| Flavour | 10-25 | | |
| Light Dry White: | | | |
| Condition and colour | 5 | | |
| Bouquet | 10 | | |
| Flavour | 10-25 | | |
| Correct ticketing | 10 | -110 | |
| (For judging purposes three bottles of each variety to be submitted, to be shown in bottles commonly used by the trade for the sale of such wine. Suitable labels to be supplied by the Society and must be used on all bottles both for judging and display purposes). | | | |
| 4. PRESERVED AND DRIED FRUITS, JAMS, JELLIES, PRESERVED VEGETABLES, PICKLES, AND SAUCES (495)— | | | |
| Preserved Fruits: | | | |
| Appearance and condition | 75 | | |
| Number of kinds | 30-105 | | |
| (One dozen bottles to be submitted for judging before points are allocated for appearance and condition). Note: Fruit exhibits may be any size. The judge, however, will take quality into consideration. | | | |
| Dried Fruits: | | | |
| Quality and condition | 35 | | |
| Crystallised Fruits: | | | |
| Quality and condition | 35 | | |
| Peels: | | | |
| Quality and condition | 15-85 | | |
| Correct ticketing | 10 | | |
| (For judging purposes samples of 1lb. each of six kinds of dried fruits, six kinds of crystallised fruits, and three kinds of peels to be staged). | | | |
| Jams: | | | |
| Appearance, condition, and quality | 40 | | |
| Number of kinds | 20 | | |
| Jellies: | | | |
| Appearance, condition, and quality | 40 | | |
| Number of kinds | 20 | | |
| (One dozen bottles each of jams and jellies to be submitted for judging, of which the judge shall open six bottles) | | | |

Sec. 10—AGRICULTURE (Continued)

before allocating his points for appearance, condition, and quality).

| | |
|------------------------------------|--------|
| Preserved Vegetables: | |
| Number of kinds | 20 |
| Appearance and condition | 30-170 |
| Correct ticketing | 20 |
| Pickles, Chutney, and Sauces: | |
| Appearance, condition, and quality | 55 |
| Number of kinds | 40-95 |
| Correct ticketing | 10 |

-495

5. FRESH FRUIT AND NUTS (790)—

| | |
|---|--------|
| Pome: | |
| Quality and condition | 50 |
| Colour | 25 |
| Size | 25 |
| Freedom from imperfections and blemish | 15-115 |
| Correct ticketing | 10 |
| (For judging purposes there shall be staged seven varieties of apples, the largest size compatible with varietal characteristics, and four varieties of pears; three dozen of each variety of apples and pears to be staged). | |
| Citrus: | |
| Quality and condition | 100 |
| Freedom from imperfections and blemish | 15-115 |
| Correct ticketing | 10 |
| (For judging purposes there shall be two varieties of each of the following:—Oranges, Lemons, Capefruit, and Mandarins. Three dozen of each variety to be staged). | |
| Tropical (comprising Bananas—three commercial varieties to be exhibited (Mona and Williams Hybrid to be classed as one variety), Pineapples (Ripley Queen or Common Queen and Smooth Leaf Cayenne), Avocados (tree varieties), and Papaws (two types)): | |
| Quality, condition, freedom from imperfections and blemish: Bananas, 45; Pineapples, 45; Avocados, 10; Papaws, 15 | 115 |
| Correct ticketing | 10 |
| (For judging purposes there shall be one bunch and six hands of each variety of Bananas; three dozen smooth leaf Cayenne and one dozen Ripley Queen or Common Queen Pineapples; one dozen of each variety of Avocados; and six only of each type of Papaw). | |
| Stone: | |
| Quality and condition | 100 |
| Freedom from imperfections and blemish | 15-115 |
| Correct ticketing | 10 |
| (For judging purposes, three varieties of peaches and plums and two varieties of nectarines to be staged. Three dozen of each variety of peaches and plums and two dozen of each variety of nectarines to be exhibited). | |
| Grapes: | |
| Quality and condition | 65-65 |
| Correct ticketing | 10 |
| (Six varieties to be staged, two bunches of each to be submitted for judging). | |
| Miscellaneous Fruits (to include any fruits not elsewhere specified): | |
| Quality and condition | 50 |
| Number of kinds | 20-70 |
| Correct ticketing | 5 |
| (One dozen of each variety to be staged). | |
| Rock Melons and Water Melons: | |
| Quality and condition | 25 |
| Size and type | 10-35 |
| Correct ticketing | 5 |
| (For judging purposes two specimens of each of three varieties of Water Melons and two specimens of each of three varieties of Rock Melons to be staged). | |
| Nuts: | |
| Quality and condition | 90 |
| Correct ticketing | 10 |
| (For judging purposes any of the following commercial nuts may be staged, provided however, that the stated number | |

-790

of varieties of any kind shall be shown. At least five varieties, not kinds must be exhibited:—

Almonds (four varieties), Walnuts, (two varieties), Hazelnuts (one variety), Pecan Nuts (four varieties), Chestnuts (one variety), Macadamia (two types), Peanuts (three varieties). Each variety to comprise 1lb. of nuts in shell. Points for quality will be awarded according to the following scale:—Peanuts, 30 points; Almonds, 20 points; Walnuts, 10 points; Pecan Nuts, 10 points; Macadamia, 10 points; Hazelnuts, 5 points; Chestnuts, 5 points. A bag, containing at least 4lb. of each variety, must be submitted for judging. In judging, points will be allotted in proportion to the number of varieties shown.

6. VEGETABLES AND GINGER (945)—

| | |
|--|--------|
| Roots: | |
| Potatoes: | |
| Uniformity (type and size) | 20 |
| Size | 35 |
| Quality— | |
| (a) Appearance—shape, skin and eyes | 35 |
| (b) Cutting | 55 |
| Freedom from blemish and disease | 35-180 |
| Correct ticketing | 15 |
| (For judging purposes, 6 varieties and 14lb. of each variety are to be staged). | |
| Onions: | |
| Uniformity | 15 |
| Size and type | 15 |
| Appearance | 15 |
| Cutting quality | 25 |
| Freedom from blemish, disease, and faulty skin | 20-90 |
| Correct ticketing | 10 |
| (For judging purposes 5lb. each of six varieties to be staged). | |
| Root Vegetables (comprising Carrots, Parsnips, Swede Turnips, Turnips, Sweet Potatoes, Beetroot, Artichokes) | 90 |
| Correct ticketing | 10 |
| (For judging purposes 7lb. of one variety of each vegetable, except Carrots of which two varieties, to be staged). | |
| Other than Roots: | |
| Tomatoes: | |
| Uniformity | 20 |
| Size and type | 20 |
| Appearance, condition, and maturity | 30 |
| Quality and flavour | 50 |
| Freedom from blemish, disease, and insect pests | 20-140 |
| Correct ticketing | 10 |
| (For judging purposes, 5lb. each of eight varieties to be staged. State of ripeness: The exhibits should be firm and matured at time of judging. They should not be over mature, but in the best possible commercial condition). | |
| Legumes (comprising Peas and Beans): | |
| Uniformity | 15 |
| Size and type | 10 |
| Appearance | 15 |
| Culinary quality | 30 |
| Freedom from blemish and disease | 20-90 |
| Correct ticketing | 10 |
| (For judging purposes 3lb. of each of three varieties to be staged). | |
| Cruciferae (comprising Cabbages, Cauliflowers, Brussels Sprouts, Sprouting Broccoli, Kohl Rabi): | |
| Uniformity | 15 |
| Size and type | 15 |
| Appearance | 15 |
| Culinary quality or cutting quality | 30 |
| Freedom from blemish, disease, and insect pests | 15-90 |
| Correct ticketing | 10 |
| (For judging purposes 5lb. of each of one variety of Brussels Sprouts, Sprouting Broccoli and Kohl Rabi, and two specimens of each of three varieties of cabbage and cauliflower to be staged). | |
| Salads (comprising Lettuce, Radishes, Eschallots, Celery, Cucumbers): | |
| Uniformity | 15 |
| Size and type | 10 |
| Appearance | 15 |
| Quality, freshness, cutting quality | 30 |

Sec. 10—AGRICULTURE (Continued)

Freedom from blemish, disease and insect pests
 20-90 |

Correct ticketing
 10 |

(For judging purposes the following to be staged: Lettuce, three varieties, two heads of each; Celery, three varieties, two heads of each; Radishes, three varieties, two bunches of each, twelve specimens to a bunch; Eschallots, one bunch of twelve bulbs; Cucumbers, three varieties, two specimens of each).

Miscellaneous Vegetables and Herbs (comprising Sweet Corn, Chokos, Peppers, Egg Plant, Okra, Gherkins, Silver Beet, Rhubarb, Leeks, Herbs, and any other variety not elsewhere specified).

Quality and condition
 30 |

Number of kinds
 20-50 |

Correct ticketing
 10 |

(For judging purposes, the following to be staged: Silver Beet, one bunch (twelve stalks) of each of two varieties; Rhubarb, one bunch (twelve stalks) of one variety; other types, six specimens of one variety in each case; Herbs, one bunch of each of five kinds).

Ginger:

Suitability for processing
 15 |

Quality
 10 |

Freedom from disease and blemishes
 10-35 |

Correct ticketing
 5 |

(For judging purposes 2lb. of Ginger to be staged).

-945

7. CUCURBITS (COMPRISING TABLE PUMPKINS, SQUASHES, AND MARROWS—ALL COMMERCIAL VARIETIES) (100)

Trueness to type
 15 |

Size and type
 15 |

Appearance
 15 |

Cutting quality
 30 |

Freedom from blemish, disease, and insect pests
 15-90 |

Correct ticketing
 10 |

(For judging purposes there shall be a collection of four varieties each of Table Pumpkins, Squashes, and Marrows, two of each variety to be staged).

-100

8. GRAIN, ETC. (1752)—

Wheat
 800 |

Correct ticketing
 30 |

Each Court shall exhibit 20 samples (not varieties) of wheat, comprising not less than eight different varieties. Each sample to be 1/4 bushel. Samples for judging purposes to be contributed by at least seven growers. A contributor is limited to four samples of different varieties. On judging day each District Court shall submit to the Wheat Stewards 20 sample bags of Wheat, each containing 5lb. Each sample bag must be identified by the variety of the Wheat and by a code letter allocated by this Society prior to judging day.

The Wheat in each sample bag must, to the satisfaction of the Stewards, be identical with the Wheat exhibited in the Court. On delivery of the sample bags to the Wheat Stewards, they shall be taken to a judging area where the Judges will allocate points to each sample as hereunder stated:

Weight per bushel
 25 |

Appearance of grain
 20 |

Uniformity and trueness to type
 20 |

Freedom from disease, pests, impurities and foreign odours
 15 |

Total
 80 |

The total possible points for the 20 samples is 1600. Therefore, the gross total points allocated to each set of 20 samples shall be divided by 2 for the purpose of arriving at the actual point score for which the maximum in accordance with the syllabus is 800.

A ticket is to be displayed on each sample, showing name of variety and the district where the wheat was grown. Varieties exhibited by N.S.W. exhibitors

shall be restricted to the following, provided any new variety approved by the Society may be added to the list:—

Strong White Wheats—Calloux, Charter, Festival, Pusa 111, Pusa 4, Saga, Yalta.
Medium Strong Wheats—Borden, Celebration, Ford, Gabo, Gular, Javelin, Kendee, Koala, Spica, Warigo.
Weak Flour Wheats—Beneubbin, Glenwari, Ghurks, Insignia, Quadrat, Pinnacle, Waratah.

Varieties exhibited by Interstate exhibitors shall be those recommended by the Department of Agriculture in their own States or any new variety approved by the Society. (See Agricultural Section for varieties for each particular district).

Barley:

Appearance and uniformity
 40 |

Purity and trueness to type
 25 |

Freedom from disease, pests, impurities and foreign odours
 20-85 |

Correct ticketing
 10 |

(Three varieties to be staged for judging. Samples to be 1/4 bushel. For judging purposes 5lb. bags of each variety to be provided).

Oats:

Weight per bushel
 60 |

Appearance and quality
 45 |

Uniformity and trueness to type
 45 |

Freedom from disease, pests and foreign odours
 25-175 |

Correct ticketing
 10 |

Each Court shall exhibit eight samples, not varieties of oats, comprising not less than four different varieties. Each sample to be 1/4 bushel.

For judging purposes, each Court shall submit to the Oat Stewards, eight sample bags of oats, each sample containing 5lb. Each sample bag must be identified by the variety of the oat and by a code letter allocated by this Society before judging day. The total possible points for the eight samples to be 1100. Therefore, the gross total points allocated to each set of eight samples shall be divided by eight for the purpose of arriving at the actual point score for which the maximum in accordance with the syllabus is 175.

Rye:

Appearance and uniformity
 20 |

Purity and trueness to type
 10 |

Freedom from disease, pests, impurities, and foreign odours
 10-40 |

Correct ticketing
 5 |

(Two varieties to be staged for judging. Samples to be 1/4 bushel. A 5lb. bag of each variety to be submitted for judging).

Malze:

Cob and Grain—

Cob:

Trueness to type
 70 |

Uniformity and quality
 60 |

Freedom from disease and insect damage
 45-350 |

Correct ticketing
 10 |

(Samples to be 1/4 bushel and three cobs). (For judging purposes, the number of varieties, including hybrids, to be staged shall be eight).

Recommended Malze varieties:

N.S.W.—Early Morn, Fitzroy, Giant White, Golden Nugget, Golden Superb, Hickory King, Iowa Silvermine, Leaming, Manning Silvermine, Wellingrove, Recommended Hybrids:—Dawn, Emblem, Ensign, Jubilee, Standfast, Sterling, Victory, G.H. 128.

Q'ld.—Varieties as recommended by the Department of Agriculture, Q'ld.

Rice:

Paddy Rice, 6lb. and one sheaf, 6 inches in diameter
 40 |

Correct ticketing
 5 |

Sec. 10—AGRICULTURE (Continued)

| | | | |
|---|-------|---|-------|
| Sorghum: | | Cut, freedom from weeds and other foreign matter ... 30-80 | |
| Grain: | | Correct ticketing ... 10 | |
| Trueness of name and variety type ... 20 | | (To be staged for judging—Millet any three varieties: Sudan Grass, Clovers, Native, and/or introduced grasses, six varieties). | |
| Uniformity, colour, and quality ... 20 | | Sheaves of Cereal Hay ... 35 | |
| Freedom from disease and insect pests ... 5-45 | | Correct ticketing ... 10 | |
| Correct ticketing ... 5 | | Green Maize, suitable for stock fodder or silage: | |
| (For judging purposes 10lb. of grain of four varieties to be staged). | | Suitability and stage of maturity ... 35 | |
| Heads: | | Length of stalk ... 25 | |
| Trueness to name ... 20 | | Leafiness and colour ... 30 | |
| Compactness and uniformity of heads ... 20 | | Freedom from disease and insect damage 10-100 | |
| Freedom from disease and insect pests ... 5-45 | | Correct ticketing ... 5 | |
| Correct ticketing ... 5 | | (For judging purposes twenty stalks of one variety, named, to be staged. Distance of travel will be taken into consideration by the judge when allocating points). | |
| (For judging purposes three heads of four varieties to be staged). | | Cattle and stock Pumpkins: | |
| Sorghum, Sweet (Seed): | | Apparent weight according to variety 50 | |
| Trueness to varietal type ... 14 | | Trueness to type ... 30 | |
| Uniformity and quality (including freedom from disease and insect pests) ... 14-28 | | Quality, freedom from blemish, mould, and disease ... 20-100 | |
| Correct ticketing ... 3 | | Correct ticketing ... 10 | |
| (For judging purposes 10lb. of seed to be staged). | | Grammas and Pie Melons: | |
| Sorghum, Sweet (Seed heads): | | Apparent weight according to variety ... 50 | |
| Trueness to varietal type ... 14 | | Trueness to type ... 25 | |
| Uniformity and quality (including freedom from disease and insect pests) ... 14-28 | | Quality, freedom from blemish, mould, and disease ... 15-90 | |
| Correct ticketing ... 3 | | Correct ticketing ... 10 | |
| (For judging purposes three heads each of three varieties to be staged). | | Stock Roots: | |
| Edible Dry Shell Beans: | | Apparent weight ... 30 | |
| Quality, uniformity, size, brightness, general appearance, freedom from disease and blemishes ... 25 | | Trueness to type ... 25 | |
| Correct ticketing ... 5-30 | -1752 | Quality, freedom from blemish, mould, disease, and dirt ... 30-85 | |
| (For judging purposes the exhibits to be two varieties of Field Beans (Navy); 5lb. of each). | | Correct ticketing ... 10 | |
| | | (Six roots each of five of the following to be staged for judging:—Mangolds, Swede Turnips, Yams, Sweet Potatoes, Stock Carrots, Sugar Beet, and 7lb. each Arrowroot and Artichokes). | |
| STOCK FODDERS (1545)— | | Sorghums for fodder: | |
| Oaten, Wheat and Lucerne Hays: | | Quality, colour, fineness of stem, leafiness 40 | |
| (Exhibits must comprise one bale pressed approximately 24 in. x 18 in. x 12 in.) | | Length ... 25 | |
| Oaten Hay: | | Sweetness ... 15 | |
| Aroma ... 30 | | Freedom from disease ... 10-90 | |
| Colour ... 30 | | Correct ticketing ... 10 | |
| Fineness and softness ... 20 | | (To be staged for judging—Four varieties, each of 20 stalks). | |
| Appearance ... 40-120 | | Miscellaneous Fodders—cured: | |
| Wheat Hay: | | Growth and apparent yield ... 25 | |
| Aroma ... 30 | | Colour, leafiness and fineness ... 20 | |
| Colour ... 30 | | Freedom from disease ... 10-55 | |
| Fineness and softness ... 20 | | Correct ticketing ... 10 | -1545 |
| Appearance ... 40-120 | | (To be staged for judging, two samples of each of three varieties of Feed Millet, two samples of each of three varieties of Clover, two samples each of Lucerne, Sudan Grass, Cow Peas, Soybeans, Velvet Beans and Pea Vines. Eight of the 12 mentioned Fodder exhibits to be shown, judged in four inch diameter sheaves or 5lb. bundles. Two bundles of each to be staged). | |
| Lucerne Hay: | | 10. COMMERCIAL FIBRES AND TROPICAL PRODUCTS (540)— | |
| Aroma ... 30 | | Cotton: | |
| Leaf ... 30 | | Length ... 30 | |
| Fineness of stem and softness ... 30 | | Fineness ... 30 | |
| Colour ... 30-120 | | Proportion of lint to seed ... 30 | |
| Correct ticketing ... 15 | | Uniformity ... 20-110 | |
| Oaten, Wheat, and Lucerne (Chaffs): | | Correct ticketing ... 5 | |
| (Sample to comprise 28lb. displayed in a suitable container). | | (Four varieties to be exhibited. For judging purposes 1lb. of each variety to be staged). | |
| Oaten Chaff: | | Broom Millet: | |
| Aroma ... 35 | | Evenness in length and straightness of fibre ... 40 | |
| Colour ... 35 | | Fineness of fibre ... 40 | |
| Cut, freedom from dust and foreign matter ... 50-120 | | Freedom from disease and insect damage 10 | |
| Wheat Chaff: | | Colour ... 10-100 | |
| Aroma ... 35 | | Correct ticketing ... 5 | |
| Colour ... 35 | | (Exhibits to be of three standard trade grades, viz., "insides" [not over 17 inches in length], "covers" [17 to 20 inches], and huri [20 to 25 inches]. For judging purposes 1 bundle, 4 inches diameter, of each grade to be staged). | |
| Cut, freedom from dust and foreign matter ... 50-120 | | | |
| Lucerne Chaff: | | | |
| Aroma ... 40 | | | |
| Colour ... 40 | | | |
| Cut, freedom from dust and foreign matter ... 40-120 | | | |
| Correct ticketing ... 10 | | | |
| Hay and Chaff, other than Oaten, Wheat, and Lucerne: | | | |
| Hay: | | | |
| Aroma ... 20 | | | |
| Colour ... 20 | | | |
| Fineness and softness ... 15 | | | |
| Appearance ... 25-80 | | | |
| Correct ticketing ... 10 | | | |
| (To be staged for judging—Millet, any three varieties: Sudan Grass, Clovers, and Native and/or introduced grasses [six varieties]. Exhibits must comprise one bale pressed, approximately 24 in. x 18 in. x 12 in.) | | | |
| Chaff (Sample to comprise 28lb. displayed in a suitable container): | | | |
| Aroma ... 25 | | | |
| Colour ... 25 | | | |

Sec. 10—AGRICULTURE (Continued)

| | | | |
|---|------|--|---------|
| Sugar Cane: | | Australasian Breeds—Corriedale (7lb.), Polwarth (6lb.), three fleeces of each. | |
| Quality, growth ... 200 | | Each class will be judged as a whole and not as individual fleeces. | |
| Trueness to variety type ... 50 | | Rain fleeces are not eligible except in the case of the British Breeds. | |
| Freedom from disease and insect damage 50-300 | | Each sub-section of each class will be judged on the following scale of points and the points allotted multiplied by the number of fleeces exhibited. At the completion of judging of all classes, the aggregate points awarded to each exhibit will be reduced on percentage to a total of 1512. This will be arrived at by dividing the aggregate points by 4.5. | |
| Correct ticketing ... 20 | -540 | (a) Soundness ... 5 | |
| (For judging purposes eight varieties to be staged). | | (b) Length ... 10 | |
| | | (c) Colour ... 10 | |
| 11. GRASSES, CLOVERS AND OTHER HERBAGE PLANTS (575)— | | (d) Softness ... 10 | |
| Grasses ... 360 | | (e) Character and style ... 20 | |
| Correct ticketing ... 20 | | (f) Trueness to type ... 15 | |
| (A maximum number of 20 species or varieties suitable to the district, for grazing or fodder, to be shown for judging purposes. For identification purposes these shall be shown in head). | | (g) Evenness ... 10 | |
| Clovers and other herbage plants (except grasses) ... 180 | | (h) Weight ... 10 | |
| Correct ticketing ... 15 | -575 | (i) Yield ... 10-100-1512 | |
| (A maximum number of 15 varieties [with a limit of three of any one species] including other useful herbage plants, such as salt bush, crowfoot, etc., suitable to the districts for grazing or fodder, to be shown for judging purposes. For ticketing purposes commercial or popular names to be stated. In addition, botanical names may be stated). | | CORRECT TICKETING: Points for correct ticketing will be allotted on the following basis: after fleeces have been placed in the stand:— | |
| 12. TOBACCO (150)— | | Merino ... 40 | |
| Tobacco—Raw: | | Crossbred ... 12 | |
| Smoking quality ... 75 | | British Breeds (Longwool) ... 6 | |
| Colour ... 25 | | British Breeds (Shortwool) ... 4 | |
| Trueness to type, tying and grading ... 40-140 | | Australasian Breeds ... 6 | 68-1580 |
| Correct ticketing ... 10 | -150 | (At the completion of the judging the judge will make available to each court an analysis of his points). | |
| (For judging purposes the exhibit to consist of approximately 3lb. each of: | | Fleeces must be delivered to the Show-ground one week prior to the first day of the Show to enable them to be judged on specially prepared tables on the Monday prior to the first day of the Show. After the fleeces have been judged, as aforesaid, they shall be handed over to the respective District Court Organisers for staging purposes. | |
| (i) Leaf-Grade from upper stalk position to the plant. | | | |
| (ii) Cutters-Grade from middle stalk position to the plant. | | | |
| (iii) Lugs-Grade from bottom or lower stalk position to the plant). | | | |
| 13. WOOL (1580)— | | 14. EFFECTIVE ARRANGEMENT AND ATTRACTIVENESS OF GENERAL DECORATIONS ... -1000 | |
| Exhibitors must classify the wool as follows:—(1) Merino (Super Fine, Fine, Medium, and Strong); (2) Crossbred (comprising Comeback, Fine Crossbred, Medium Crossbred, and Strong Crossbred); (3) British Breeds—Longwool (Border Leicester and Romney Marsh), Shortwool (Southdown and Dorset Horn); (4) Australasian Breeds (Corriedales and Polwarths). | | TOTAL ... 11,300 | |
| Before judging, placards must be placed on each class showing its classification. After judging, when the wool is placed in boxes, a further placard must be attached to each fleece showing the classification, the name of the grower and the district where grown. The wool must have been procured from at least ten growers. No points will be awarded for scoured wool, but it may be used for decorative purposes. Fleeces exhibited must be skirted and conform to the minimum weights, shown for each section. For judging purposes only fleeces in each sub-section shall include:— | | | |
| Merino (4 types)—Super Fine (4lb.), Fine (5lb.), Medium (6lb.), Strong (7lb.), 10 fleeces of each. | | | |
| Crossbred (4 types)—Comeback, 58s. to 60s. (6lb.), Fine Crossbred 56s. (6lb.), Medium Crossbred 50s. (7lb.), Strong Crossbred 46s. and under (7lb.), three fleeces of each. | | | |
| British Breeds—Longwool (2 types)—Border Leicester (8lb.), Romney Marsh (8lb.), three fleeces of each. | | | |
| British Breeds—Shortwool (2 types)—Dorset Horn (4lb.), Southdown (3lb.), two fleeces of each. | | | |

| SUB-SECTIONS. | Max. Points. |
|--|--------------|
| Dairy Produce and Foods (1 and 2) ... | 35 |
| Wine and Processed Fruits and Vegetables, etc. (3 and 4) ... | 35 |
| Fresh Fruit and Nuts (5) ... | 35 |
| Fresh Vegetables and Ginger (6) ... | 35 |
| Cucurbits, Cattle and Stock Pumpkins, Grammas and Pie Melons, and Stock Roots (7 and part 9) ... | 35 |
| Grain, etc. (8) ... | 35 |
| Balance of Stock Fodders, Commercial Fibres, etc., Grasses, etc., and Tobacco (part 9, 10, 11, and 12) ... | 35 |
| Wool (13) ... | 35 |
| Effective Arrangement and Attractiveness of Complete Court ... | 450 |
| New Features and originality of Display ... | 200 |
| Ticketing—must be legible and attractive ... | 70 |
| TOTAL ... | 1000 |

COMMONWEALTH DISTRICT COMPETITION

SPECIAL AGRICULTURE REGULATIONS.

Exhibitors are reminded that the Society's General Regulations apply to all sections of the Show and that the Special Regulations hereunder set out which apply to this section only are merely supplementary to the General Regulations.

TROPHIES ON DISPLAY.

Trophies offered for competition in the Agriculture Section shall be on display in the special windows provided for the purpose in the Society's General Showground Office.

SPECIAL REGULATIONS.

Exhibits other than Butter, Cheese, Hams, Bacon, Lard, and Beef and Mutton Dripping, must be in position and ready for judging not later than 9 a.m., Friday, 23rd March.

Judging other than Butter, Cheese, Hams, Bacon, Lard, and Beef and Mutton Dripping, to commence at 10 a.m., Friday, 23rd March.

The Agricultural Hall shall be open to the Public on completion of judging and thereafter daily from 9 a.m. to 10 p.m., except Monday, 26th and Good Friday, 30th March, on which days the Pavilion will close at 6 p.m.

The sale of exhibits shall commence at 7 p.m., Tuesday, 3rd April.

REGULATIONS FOR THE COMMONWEALTH DISTRICT COMPETITION.

- The Society's By-laws, with these Regulations, will govern this Competition.
- For the Best Collection of Exhibits from Districts as defined in the following Regulations:—

PRIZES: £500.

In addition, £100 will be given for each District Competing.

| | |
|--------------------|-------|
| Example—1 District | £500 |
| 2 Districts | £700 |
| 3 Districts | £800 |
| 4 Districts | £900 |
| 5 Districts | £1000 |

To be divided in proportion to the percentage of points gained by each exhibit.

Any collection securing less than 70 per cent. will not be entitled to an award.

(Special Prize)—Trophy, value £100, presented by the Commercial Bank of Australia, Ltd., will be awarded to the District securing the highest number of points for EFFECTIVE ARRANGEMENT AND ATTRACTIVENESS OF GENERAL DECORATIONS. The Trophy before being won outright must be won three times in succession or five times in all by the same District. A memento will be awarded to each yearly winner. Previous Winner—1955, Western N.S.W.

- A Shield, value £50, is offered for this Competition. The winner of the Competition each year to have name engraved on Shield and hold same for year. Shield to be returned to the Royal Agricultural Society seven days before the succeeding show.

ORGANISING EXPENSES.

- The sum of £1,000 for organising purposes (in addition to Prize Money) will be paid to each competing district.

FREIGHT.

- A sum of £100 will be paid by the Society to each District to cover freight charges. By reason of distance an additional £100 will be granted to the West Moreton and Downs (Q'ld.) District and an additional £50 to the Northern (N.S.W.) District.

BALANCE SHEET AND STATEMENT OF RECEIPTS AND EXPENDITURE.

The Society must be supplied with a Balance Sheet and a Statement of Receipts and Expenditure from each District Exhibit Organising Committee not later than 15th August each year.

CERTIFICATE OF MERIT.

On the recommendation of an Organiser of a District Committee, the Society may award a "Certificate of Merit" to a person who has contributed material of special merit, for exhibition in the District Court. The number of such certificates shall be limited to 20 to any one Court.

ENTRY FEE, 5s.

- Collections may consist of all or any of the articles mentioned in Clauses 1 to 13 of the Scale of Points hereinafter set out. NO EXHIBITS OTHER THAN THOSE ENUMERATED IN THE SCALE OF POINTS SHALL BE INCLUDED IN THE COLLECTION. Condiments to be in bottles or glass jars. Preserves or like exhibits in tins are not eligible. All produce must have been raised during the current season, or during the immediately preceding season.
- All exhibits will be ineligible for competition in the general classes.
- All exhibits, wheat excepted, will be judged in a similar manner to that of the Open Classes.
- Each District shall be responsible for payment of freight on exhibits notwithstanding the manner in which such exhibits are forwarded. (For allowance see Regulation 5). The N.S.W. Railway Department will carry free to Sydney exhibits certified by local secretaries labelled, and endorsed "FOR DISTRICT EXHIBIT." However, freight is charged on the return journey and the amount so charged shall be paid by the Royal Agricultural Society and deducted from the freight allowance granted to each District. Exhibits consigned from Queensland will be carried free to the border of N.S.W. on the forward journey and charged for from the border on the return journey. Any parcel or package not bearing the District Label must be sent carriage prepaid and no refund will be made by the Society of the amount so paid. The Society will be responsible for and bear all costs associated with the carriage of exhibits from Darling Harbour, Central Railway Station and/or Alexandria Goods Yard to the Showground and from the Showground to the railhead for return. EXHIBITS FOR INDIVIDUAL CLASSES IN THE AGRICULTURAL SECTION MUST NOT BE CONSIGNED WITH THOSE FOR THE DISTRICT EXHIBIT. Perishable exhibits consigned by passenger train must be endorsed "Non-Competitive Exhibit" then state the name of the district exhibit. Refer to Coaching Rate Book, page 113, Clause 9.

- Butter exhibits are to be delivered to Waterside Cold Stores Pty., Ltd., 10 Point-st., Pyrmont, not later than Monday, 12th March to enable the exhibits to be judged there on Monday, 19th March, commencing at 9 a.m. A district representative may be present with the Stewards during judging.

Cheese, Hams, Bacon, Lard, Beef and Mutton Dripping exhibits to be delivered to Dairy Hall, Sydney Showground, not later than 9 a.m., Thursday, 22nd March, to enable exhibits to be judged there on that day. A district representative may be present with the Stewards during judging.

Wool fleeces must be delivered to the Showground one week prior to the first day of the Show to enable them to be judged on specially prepared tables on the Monday prior to the first day of the Show. After the fleeces have been judged, as aforesaid, they shall be handed over to the respective District Court Organisers for staging purposes.

- Each collection must be in charge of a responsible member or nominee of the Societies exhibiting same, who will have to arrange and display the exhibit to the best advantage.

- No exhibitor or person representing a District shall address any Judge while the latter is judging. All explanations must be supplied to the Stewards in every case. No Steward shall consult with the Judge or offer any advice or suggestion in respect to the number of points to be allotted in any case. During judging no person shall be admitted to the Courts except the Judges, Stewards, and Delegate or Delegates appointed by the District to explain any details which may be considered necessary by the Stewards.

- The Judges shall be requested to return to the Courts the day after judging for the purpose of explaining the allocation of points. In this connection suitable and definite appointments shall be made by the Steward-in-Chief and such times entered in an appointment book on the day of judging.

- The Judges have full power to obtain through, but not from, the Stewards such expert assistance as they think fit.

- All exhibits must be the bona fide production of the District exhibiting same. Any District committing a breach of this regulation will be liable to disqualification.

- The Organisers MUST send plans to the Director, Royal Agricultural Society, for approval or otherwise, for any alterations or re-arrangements to the existing courts by 1st October, 1955, otherwise the Organisers must use the stands in their courts as used by them for the last Show. The approved alterations or re-arrangements to be carried out by the Society. THE COURTS WILL BE ERECTED BY THE SOCIETY AND MAY BE DECORATED BY EXHIBITORS WITH PASTORAL OR AGRICULTURAL PRODUCTS OF THE DISTRICT, WHICH PRODUCTS MUST COME WITHIN THE SCALE OF POINTS FOR THE COMPETITION. EXHIBITS USED FOR DECORATIONS SHALL NOT BE TAKEN INTO CONSIDERATION BY THE JUDGES IN AWARDING SECTIONAL POINTS, BUT POINTS WILL BE ALLOTTED UNDER THE HEADING OF ATTRACTIVENESS OF GENERAL DECORATIONS. Where sheaves of hay or other produce used for decorative purposes cannot be conveniently inspected by the judge a sufficient portion of such exhibit must be in a position where it can be readily examined.

NOTE.—District Exhibit Organising Committees are advised that in addition to the provisions of Clause 16, should there be any other expenses associated with construction or display work which may be borne by this Society, such must be first approved in writing by the Society before the work is executed and the expenditure is incurred.

- For the purpose of this Competition the State of N.S.W. is nominally divided into four districts. See page 10-11 for map showing District Boundaries. Exhibits from districts in other States are eligible to compete, such districts to be those recognised by the leading Society of the State represented.

SCALE OF POINTS USED IN JUDGING OF EXHIBITS.

A District may, subject to the approval of the Society, eliminate from its range of exhibits certain specified commodities, which cannot be commercially produced but such elimination shall not exceed in point value 650. A list of the exhibits to be eliminated must be lodged with the Society not later than 15th January, each year. The whole or part of any one of the Sections 1-13, or the whole or part of any Sub-Section may be eliminated. All eliminations shall be subject to review and approval or otherwise by this Society's Agricultural Section Committee. As a result, the competition shall be decided on the percentages gained by the various Districts of the total points which it is possible for them to receive.

SEE PAGE 10-11 FOR MAP SHOWING DISTRICT BOUNDARIES.

ALLOCATION OF DISTRICTS

| Competing Districts | Commodities Eliminated | Points |
|-----------------------------|--------------------------------|--------|
| 1. CENTRAL N.S.W. | Cotton | 115 |
| | Edible Dry Shell Beans | 30 |
| | Rice | 45 |
| | Stone Fruit | 125 |
| | Sugar Cane | 320 |
| | TOTAL | 635 |
| 2. MORETON AND DOWNS, Q'LD. | Comb Honey in Frames | 29 |
| | Fruits, Stone | 125 |
| | Rock Melons and Water Melons | 40 |
| | Rice | 45 |
| | Wines, Light Dry Red | 25 |
| | Wool—British Breeds, Longwool | 133 |
| | Wool—British Breeds, Shortwool | 89 |
| | Wool—Australasian Breeds | 133 |
| | TOTAL | 619 |
| 3. NORTHERN N.S.W. | Citrus Fruits | 125 |
| | Cotton | 115 |
| | Edible Dry Shell Beans | 30 |
| | Rice | 45 |
| | Stone Fruits | 125 |
| | TOTAL | 550 |

ROYAL EASTER SHOW. 1956.

COMMONWEALTH DISTRICT COMPETITION.

| | | Central, N.S.W. | Moreton & Downs, Q'ld. | North, N.S.W. | South, N.S.W. | West, N.S.W. |
|---|-----|--------------------|---------------------------|------------------|------------------|-----------------|
| 1. Dairy Produce: | | | | | | |
| Butter | 625 | 592 | 597 | 610 | 601.5 | 594 |
| Correct ticketing | 10 | 10 | 10 | 10 | 10 | 10 |
| Cheese | 325 | 302.5 | 307 | 306 | 298 | 318 |
| Correct ticketing | 10 | 10 | 10 | 10 | 10 | 10 |
| | 970 | 914.5 | 924 | 936 | 919.5 | 932 |
| 2. Foods: | | | | | | |
| Hams and Bacon | 280 | 184 | 201 | 237 | 234 | 220 |
| Correct ticketing | 10 | 10 | 10 | 10 | 10 | 10 |
| Eggs | 185 | 150 | 147 | 144 | 158 | 167 |
| Correct ticketing | 10 | 10 | 10 | 10 | 10 | 10 |
| Extracted Honey (Liquid) | 55 | 49 | 48 | 51 | 51 | 50 |
| Correct ticketing | 3 | 3 | 3 | 3 | 2 | 2 |
| Extracted Honey (Granulated) | 54 | 46 | 46 | 48 | 42 | 46 |
| Correct ticketing | 3 | 3 | 3 | 3 | 2 | 3 |
| Comb Honey (In Sections) | 26 | 17 | 16 | 10 | 22 | 21 |
| Correct ticketing | 3 | 3 | 3 | 0 | 3 | 3 |
| Comb Honey (In Frames) | 26 | 22 | - | 16 | 23 | 21 |
| Correct ticketing | 3 | 3 | - | 3 | 3 | 3 |
| Beeswax--White and Yellow | 17 | 11 | 12 | 11 | 15 | 17 |
| Correct ticketing | 3 | 3 | 3 | 3 | 3 | 3 |
| Lard, Beef, and Mutton Dripping | 60 | 58 | 53 | 40 | 50 | 53 |
| Correct ticketing | 10 | 10 | 10 | 7 | 10 | 10 |
| | 748 | 582 | 565 | 596 | 638 | 639 |
| 3. Wines: | | | | | | |
| Sweet Red | 25 | 21 | 20 | - | 21 | 18 |
| Sweet White | 25 | 22 | 20 | - | 22 | 20 |
| Light Dry Red | 25 | 21 | - | - | 23 | 19 |
| Light Dry White | 25 | 24 | 20 | - | 20 | 17 |
| Correct ticketing | 10 | 8 | 6 | - | 9 | 4 |
| | 110 | 96 | 66 | - | 95 | 78 |
| 4. Preserved and Dried Fruits, Jams, Jellies, Preserved Vegetables, Pickles, and Sauces: | | | | | | |
| Preserved Fruits | 105 | 81 | 64 | 79 | 94 | 90 |
| Dried Fruits | 35 | 28 | 25 | 21 | 33 | 26 |
| Crystallised Fruits | 35 | 29 | 25 | 21 | 32 | 28 |
| Peels | 15 | 11 | 10 | 10 | 13 | 12 |
| Correct ticketing | 10 | 10 | 10 | 10 | 10 | 10 |
| Jams | 60 | 56 | 55 | 46 | 55 | 52 |
| Jellies | 60 | 54 | 53 | 44 | 48 | 52 |
| Preserved Vegetables | 50 | 38 | 33 | 35 | 44 | 43 |
| Correct ticketing | 20 | 20 | 20 | 20 | 20 | 20 |
| Pickles, Chutney, and Sauces | 95 | 85 | 73 | 81 | 86 | 84 |
| Correct ticketing | 10 | 10 | 10 | 10 | 10 | 10 |
| | 495 | 422 | 378 | 377 | 445 | 427 |

5. Fresh Fruit and Nuts:

| | | | | | | |
|-----------------------------|-----|-------|--------|--------|--------|--------|
| Pome | 115 | 95 | 93 | 73 | 101 | 104 |
| Correct ticketing | 10 | 6 | 9.5 | 7 | 8 | 10 |
| Citrus | 115 | 46.75 | 74.75 | - | 57.5 | 83.75 |
| Correct ticketing | 10 | 5.5 | 9.25 | - | 6.25 | 9 |
| Tropical | 115 | 92 | 104.5 | 99.75 | - | - |
| Correct ticketing | 10 | 8 | 9 | 8.5 | - | - |
| Stone | 115 | - | - | - | 85 | 96 |
| Correct ticketing | 10 | - | - | - | 9.5 | 9 |
| Grapes | 65 | 43.5 | 43.5 | 46 | 46 | 52.5 |
| Correct ticketing | 10 | 10 | 8.5 | 8.5 | 8.5 | 10 |
| Miscellaneous | 70 | 44.5 | 46 | 46 | 50.5 | 53.5 |
| Correct ticketing | 5 | 5 | 5 | 3 | 4 | 4 |
| Rock Melons and Watermelons | 35 | 29.5 | - | 26 | 30.5 | 24.5 |
| Correct ticketing | 5 | 4.5 | - | 4 | 3.5 | 4 |
| Nuts | 90 | 73 | 59.5 | 66 | 53.5 | 66 |
| Correct Ticketing | 10 | 9.5 | 7 | 7.5 | 7.5 | 7.5 |
| | | 790 | 472.75 | 469.50 | 395.25 | 471.25 |
| | | | | | 790 | 533.75 |

6. Vegetables and Ginger:

| | | | | | | |
|---|-----|------|------|-------|-------|-------|
| Potatoes | 180 | 147 | 140 | 160 | 147 | 148 |
| Correct ticketing | 15 | 15 | 15 | 15 | 13 | 15 |
| Onions | 90 | 66 | 67 | 76 | 66 | 71 |
| Correct ticketing | 10 | 9 | 9 | 9 | 9 | 10 |
| Root Vegetables (comprising Carrots, Parsnips, Swede Turnips, Turnips, Sweet Potatoes, Beetroot, Artichokes) | 90 | 76 | 73 | 74 | 79 | 75 |
| Correct ticketing | 10 | 9.5 | 9.5 | 8.5 | 9.5 | 8.5 |
| Tomatoes | 140 | 114 | 109 | 115 | 103 | 121 |
| Correct ticketing | 10 | 9 | 9 | 9 | 9 | 9 |
| Legumes | 90 | 68.5 | 68.5 | 68.5 | 71 | 77.5 |
| Correct ticketing | 10 | 10 | 8.5 | 10 | 10 | 10 |
| Cruciferae | 90 | 57.5 | 65.5 | 57 | 75.5 | 78 |
| Correct ticketing | 10 | 7 | 8 | 7 | 8.5 | 9 |
| Salads | 90 | 69 | 59 | 55 | 64 | 76 |
| Correct ticketing | 10 | 8 | 5 | 6 | 8.5 | 9 |
| Miscellaneous | 50 | 44 | 40 | 35 | 44 | 48 |
| Correct ticketing | 10 | 8.5 | 7.5 | 8.5 | 9.5 | 10 |
| Ginger | 35 | 28 | 32 | 32 | 30 | - |
| Correct ticketing | 5 | 5 | 5 | 5 | 5 | - |
| | | 945 | 761 | 724.5 | 750.6 | 761.5 |
| | | | | | | 775 |

7. Cucurbits:

(Comprising Table Pumpkins,
Squashes, and Marrows).

| | | | | | | |
|-------------------|----|-----|----|----|----|----|
| Correct Ticketing | 90 | 77 | 71 | 76 | 81 | 80 |
| | 10 | 10 | 8 | 10 | 10 | 10 |
| | | 100 | 87 | 79 | 86 | 91 |
| | | | | | | 90 |

8. Grain, etc.:

| | | | | | | |
|-------------------|-----|-------|-------|-------|-------|-------|
| Wheat | 800 | 645 | 683 | 666 | 725.5 | 709.5 |
| Correct ticketing | 30 | 30 | 25 | 30 | 30 | 30 |
| Barley | 85 | 65.6 | 48.5 | 59.8 | 58.5 | 55.9 |
| Correct ticketing | 10 | 10 | 10 | 10 | 10 | 10 |
| Oats | 175 | 151.6 | 151 | 156.7 | 152.5 | 146.4 |
| Correct ticketing | 10 | 10 | 8 | 10 | 10 | 10 |
| Rye | 40 | 27.5 | 32.5 | 31 | 30.5 | 35 |
| Correct ticketing | 5 | 5 | 5 | 5 | 5 | 5 |
| Maize: | | | | | | |
| Cob | 175 | 138 | 137 | 137.5 | 141.5 | 137.5 |
| Grain | 175 | 146.5 | 140.5 | 143 | 149.5 | 140.5 |
| Correct ticketing | 10 | 10 | 10 | 10 | 10 | 10 |
| Rice | 40 | - | - | - | 38 | - |
| Correct ticketing | 5 | - | - | - | 5 | - |

3.

Sorghum:

| | | | | | | |
|---------------------------|------|--------|------|------|------|--------|
| Grain | 45 | 37 | 39 | 38 | 41 | 40 |
| Correct ticketing | 5 | 4 | 5 | 4 | 5 | 4 |
| Heads | 45 | 37 | 40 | 35 | 43 | 39 |
| Correct ticketing | 5 | 4 | 5 | 4 | 5 | 4 |
| Sorghum Sweet (Seed) | 28 | 22 | 26 | 26 | 26 | 26 |
| Correct ticketing | 3 | 3 | 3 | 3 | 3 | 3 |
| Sorghum Sweet (Seedheads) | 28 | 26 | 24 | 24 | 26 | 26 |
| Correct ticketing | 3 | 5 | 3 | 3 | 3 | 3 |
| Edible Dry Shell Beans | 25 | - | 10 | - | - | - |
| Correct ticketing | 5 | - | 2.5 | - | - | - |
| | 1752 | 1375.2 | 1407 | 1398 | 1518 | 1434.8 |

9. Stock Fodders:

| | | | | | | |
|------------------------------|------|------|--------|--------|------|--------|
| Oaten Hay | 120 | 120 | 120 | 120 | 115 | 120 |
| Wheaten Hay | 120 | 120 | 120 | 120 | 120 | 120 |
| Lucerne Hay | 120 | 120 | 118 | 109 | 120 | 110 |
| Correct ticketing | 15 | 15 | 15 | 15 | 15 | 15 |
| Oaten Chaff | 120 | 120 | 120 | 109 | 120 | 110 |
| Wheaten Chaff | 120 | 118 | 119 | 117 | 120 | 109 |
| Lucerne Chaff | 120 | 120 | 119 | 117 | 120 | 120 |
| Correct ticketing | 10 | 10 | 10 | 10 | 10 | 10 |
| Hay | 80 | 80 | 80 | 79 | 77 | 78 |
| Correct ticketing | 10 | 10 | 10 | 10 | 10 | 10 |
| Chaff | 80 | 80 | 80 | 74 | 78 | 80 |
| Correct ticketing | 10 | 10 | 10 | 10 | 10 | 10 |
| Cereal Hay | 35 | 35 | 33 | 30 | 34 | 32 |
| Correct ticketing | 10 | 10 | 10 | 10 | 10 | 10 |
| Green Maize | 100 | 96 | 91 | 81.5 | 97 | 93 |
| Correct ticketing | 5 | 5 | 5 | 5 | 5 | 3 |
| Cattle and Stock Pumpkins | 100 | 63 | 81.5 | 67 | 79 | 73 |
| Correct ticketing | 10 | 5 | 7 | 9 | 9 | 6 |
| Grammas and Pie Melons | 90 | 53 | 61 | 71 | 54 | 62.5 |
| Correct ticketing | 10 | 5.5 | 6 | 10 | 7 | 6 |
| Stock Roots | 85 | 60 | 59 | 55 | 59 | 69 |
| Correct ticketing | 10 | 8 | 7 | 8 | 6 | 8 |
| Sorghums for fodder | 90 | 82 | 81 | 78 | 88 | 80 |
| Correct ticketing | 10 | 10 | 9 | 9 | 10 | 10 |
| Miscellaneous Fodders--cured | 55 | 51.5 | 53 | 47 | 52 | 51 |
| Correct ticketing | 10 | 10 | 9 | 10 | 10 | 10 |
| | 1545 | 1417 | 1433.5 | 1380.5 | 1435 | 1405.5 |

10. Commercial Fibres and Tropical Products:

| | | | | | | |
|-------------------|-----|----|-----|-----|-----|-----|
| Cotton | 110 | - | 77 | - | 62 | 73 |
| Correct ticketing | 5 | - | 4 | - | 3 | 4 |
| Broom Millet | 100 | 85 | 66 | 90 | 90 | 88 |
| Correct ticketing | 5 | 5 | 4 | 5 | 4 | 5 |
| Sugar Cane | 300 | - | 296 | 291 | - | - |
| Correct ticketing | 20 | - | 20 | 20 | - | - |
| | 540 | 90 | 467 | 406 | 159 | 170 |

11. Grasses, Clovers and Other Herbage Plants:

| | | | | | | |
|---|-----|-----|-----|-----|-----|-----|
| Grasses | 360 | 322 | 319 | 298 | 306 | 321 |
| Correct ticketing | 20 | 18 | 18 | 19 | 18 | 20 |
| Clovers and other herbage plants (except grasses) | 180 | 159 | 151 | 127 | 159 | 165 |
| Correct ticketing | 15 | 14 | 14 | 13 | 15 | 15 |
| | 575 | 513 | 502 | 457 | 498 | 521 |

| | | | | | | | |
|--|-------|---------|--------|---------|---------|---------|--|
| 12. <u>Tobacco:</u> | | | | | | | |
| Raw | 140 | 112 | 97 | 101 | - | 91 | |
| Correct Ticketing | 10 | 10 | 10 | 8 | - | 10 | |
| | 150 | 122 | 107 | 109 | - | 101 | |
| 13. <u>Wool:</u> | | | | | | | |
| (See further Roneo for dissection of Points) | | | | | | | |
| Percentage | 1512 | 1422.5 | 1008 | 1429.3 | 1456.8 | 1424.4 | |
| Ticketing | 68 | 68 | 52 | 46.5 | 68 | 66 | |
| | | 1490.5 | 1060 | 1475.8 | 1524.8 | 1490.4 | |
| 14. <u>Effective Armagement and Attractiveness of General Decorations:</u> | | | | | | | |
| | 1000 | 940.6 | 935.6 | 922.6 | 976.6 | 960.8 | |
| TOTAL POINTS AWARDED: | 11300 | 9273.55 | 9118.1 | 9289.65 | 9532.65 | 9558.25 | |
| TOTAL POSSIBLE POINTS: | | 10665 | 10681 | 10750 | 10675 | 10740 | |
| PERCENTAGE | | 86.95 | 85.37 | 86.42 | 89.30 | 89.00 | |
| PLACINGS: | | THIRD | FIFTH | FOURTH | FIRST | SECOND | |

ROYAL EASTER SHOW - 1956.

ANALYSIS OF POINTS FOR WOOL

COMMONWEALTH DISTRICT COMPETITION.

W O O L.

| COURT | MERINO (4000) | | | | | CROSSBRED (1200) | | | | | BRITISH BREEDS (600) | | | AUSTRALIAN BREEDS (600) | | | BRITISH BREEDS (400) | | | GRAND TOTAL | DIVIDE BY 4.5 for % | TICK-ETING (68) |
|------------------------|---------------|------|------|------|------|------------------|-------|-------|-------|--------|----------------------|-----------|-------|-------------------------|-----------|-------|----------------------|------------|------|-------------|---------------------|-----------------|
| | Super fine | Fine | Med. | Str. | Tot. | Come back | Fine | Med. | Str. | Tot. | Bord. Leic. | Rom Marsh | Tot. | Corrie dale | Pol-warth | Tot. | Der. Horn. | South down | Tot. | | | |
| CENTRAL N.S.W. | 970 | 950 | 955 | 890 | 3765 | 273 | 285 | 271.5 | 283.5 | 1113 | 286.5 | 277.5 | 564 | 286.5 | 280.5 | 567 | 199 | 193 | 392 | 6401 | 1422.5 | 68 |
| MORETON AND DOWNS Q'LD | 890 | 845 | 855 | 905 | 3495 | 259.5 | 267 | 271.5 | 243 | 1041 | - | - | - | - | - | - | - | - | - | 1536 | 1008 | 52 |
| NORTH N.S.W. | 970 | 970 | 960 | 935 | 3835 | 282 | 256.5 | 268.5 | 276 | 1083 | 274.5 | 273 | 547.5 | 280.5 | 294 | 574.5 | 196 | 196 | 392 | 6432 | 1429.3 | 46.5 |
| SOUTH N.S.W. | 945 | 945 | 955 | 985 | 3830 | 289.5 | 294 | 292.5 | 295.5 | 1171.5 | 291 | 286.5 | 577.5 | 298.5 | 288 | 586.5 | 193 | 197 | 390 | 6555.5 | 1456.8 | 68 |
| WEST N.S.W. | 960 | 940 | 895 | 910 | 3705 | 288 | 286.5 | 291 | 288 | 1153.5 | 292.5 | 291 | 583.5 | 297 | 279 | 576 | 198 | 194 | 392 | 6410 | 1424.4 | 66 |

ROYAL EASTER SHOW - 1956

ANALYSIS OF POINTS AWARDED IN DISTRICT EXHIBIT

CENTRAL N.S.W.

| Sample | Appearance of grain | Uniformity and type | Freedom from disease pest & foreign odours | Bushel weight | Correct and effective ticketing | Total |
|----------------|---------------------|---------------------|--|---------------|---------------------------------|-------|
| Maximum Points | 20 | 20 | 15 | 25 | 30 | |
| | | | | | 30 | |
| Ford | 16 | 14 | 13 | 21 | | |
| Celebration | 15 | 13 | 10 | 20 | | |
| Celebration | 15 | 13 | 10 | 21 | | |
| Saga | 14 | 13 | 11 | 22 | | |
| Festival | 18 | 18 | 11 | 22 | | |
| Gabo | 17 | 17 | 13 | 20 | | |
| Festival | 18 | 17 | 11 | 22 | | |
| Celebration | 17 | 17 | 12 | 21 | | |
| Pusa | 15 | 16 | 11 | 21 | | |
| Spica | 18 | 17 | 13 | 21 | | |
| Gabo | 16 | 16 | 10 | 20 | | |
| Ford | 17 | 17 | 11 | 21 | | |
| Festival | 17 | 17 | 12 | 22 | | |
| Charter | 17 | 16 | 9 | 22 | | |
| Saga | 14 | 16 | 9 | 19 | | |
| Charter | 17 | 17 | 9 | 22 | | |
| Charter | 16 | 16 | 7 | 21 | | |
| Gabo | 14 | 17 | 11 | 20 | | |
| Festival | 18 | 17 | 14 | 23 | | |
| Festival | 16 | 16 | 11 | 22 | 30 | |
| | 325 | 320 | 218 | 423 | 1286 | 673 |

MORETON AND DOWNS

| Sample | Appearance of grain | Uniformity and type | Freedom from disease pest & foreign odours | Bushel weight | Correct and effective ticketing | Total |
|----------------|---------------------|---------------------|--|---------------|---------------------------------|-------|
| Maximum Points | 20 | 20 | 15 | 25 | 30 | |
| | | | | | 25 | |
| Gabo | 16 | 16 | 14 | 22 | | |
| Celebration | 16 | 15 | 10 | 23 | | |
| Seafoam | 15 | 16 | 10 | 24 | | |
| Gabo | 16 | 17 | 14 | 22 | | |
| Charter | 16 | 17 | 14 | 23 | | |
| Cailloux | 17 | 17 | 10 | 24 | | |
| Festival | 17 | 16 | 13 | 23 | | |
| Seafoam | 15 | 16 | 10 | 24 | | |
| Celebration | 16 | 16 | 11 | 22 | | |
| Festival | 17 | 17 | 12 | 24 | | |
| Festival | 17 | 16 | 12 | 24 | | |
| Lawrence | 16 | 16 | 14 | 21 | | |
| Charter | 18 | 18 | 11 | 23 | | |
| Puno | 18 | 17 | 14 | 22 | | |
| CCC | 16 | 16 | 14 | 23 | | |
| Lawrence | 16 | 16 | 14 | 21 | | |
| Charter | 18 | 18 | 14 | 23 | | |
| Puno | 16 | 16 | 15 | 22 | | |
| Cailloux | 18 | 18 | 10 | 24 | | |
| CCC | 16 | 16 | 13 | 23 | 25 | |
| | 330 | 330 | 249 | 457 | 1366 | 708 |

NORTHERN N.S.W.

| Maximum Points | 20 | 20 | 15 | 25 | 30 | |
|----------------|-----|-----|-----|-----|------|-----|
| | | | | | 30 | |
| Gabo | 14 | 14 | 12 | 19 | | |
| Cailloux | 18 | 18 | 13 | 22 | | |
| Festival | 17 | 13 | 12 | 22 | | |
| Festival | 15 | 16 | 11 | 22 | | |
| Warigo | 16 | 16 | 13 | 20 | | |
| Ford | 17 | 16 | 12 | 22 | | |
| Pusa lll | 19 | 18 | 14 | 22 | | |
| Gabo | 15 | 16 | 12 | 19 | | |
| Spica | 17 | 17 | 11 | 22 | | |
| Warigo | 17 | 16 | 15 | 20 | | |
| Charter | 17 | 17 | 10 | 22 | | |
| Glenwari | 17 | 17 | 11 | 21 | | |
| Spica | 15 | 16 | 10 | 18 | | |
| Charter | 17 | 16 | 14 | 22 | | |
| Charter | 17 | 17 | 15 | 23 | | |
| Gabo | 14 | 16 | 12 | 19 | | |
| Pusa lll | 18 | 18 | 15 | 22 | | |
| Cailloux | 18 | 18 | 15 | 22 | | |
| Charter | 18 | 16 | 14 | 23 | | |
| Festival | 17 | 16 | 11 | 22 | 30 | |
| | 333 | 327 | 252 | 424 | 1336 | 698 |

SOUTHERN N.S.W.

| Maximum Points | 20 | 20 | 15 | 25 | 30 | |
|----------------|-----|-----|-----|-----|------|-------|
| Ford | 18 | 18 | 15 | 22 | | |
| Panther | 18 | 17 | 13 | 24 | | |
| Festival | 19 | 18 | 14 | 25 | | |
| Festival | 17 | 17 | 14 | 25 | | |
| Sabre | 17 | 17 | 14 | 23 | | |
| Festival | 18 | 18 | 15 | 25 | | |
| Gular | 18 | 17 | 14 | 24 | | |
| Gabo | 18 | 0 | 15 | 24 | | |
| Dundee | 18 | 17 | 14 | 25 | | |
| Charter | 18 | 17 | 14 | 24 | | |
| Saga | 18 | 16 | 15 | 23 | | |
| Insignia | 18 | 17 | 15 | 23 | | |
| Festival | 17 | 17 | 13 | 24 | | |
| Charter | 18 | 17 | 14 | 24 | | |
| Festival | 18 | 18 | 15 | 24 | | |
| Festival | 17 | 18 | 14 | 24 | | |
| Ford | 18 | 19 | 14 | 24 | | |
| Celebration | 18 | 18 | 15 | 23 | | |
| Insignia | 18 | 18 | 15 | 23 | | |
| Celebration | 18 | 18 | 17 | 23 | 30 | |
| | 357 | 332 | 286 | 476 | 1451 | 755.5 |

WESTERN N.S.W.

| Maximum Points | 20 | 20 | 15 | 25 | 30 | |
|----------------|-----|-----|-----|-----|------|-------|
| | | | | | 30 | |
| Saga | 15 | 18 | 9 | 22 | | |
| Celebration | 18 | 18 | 14 | 23 | | |
| Charter | 17 | 18 | 11 | 24 | | |
| Ford | 17 | 18 | 10 | 23 | | |
| Festival | 18 | 18 | 15 | 24 | | |
| Celebration | 18 | 18 | 14 | 23 | | |
| Charter | 17 | 18 | 11 | 23 | | |
| Festival | 18 | 18 | 15 | 23 | | |
| Glenwari | 18 | 18 | 12 | 22 | | |
| Festival | 18 | 18 | 12 | 23 | | |
| Pusa III | 18 | 17 | 14 | 22 | | |
| Charter | 18 | 18 | 14 | 24 | | |
| Festival | 17 | 18 | 13 | 24 | | |
| Gabo | 16 | 16 | 13 | 22 | | |
| Festival | 18 | 17 | 13 | 24 | | |
| Charter | 18 | 18 | 14 | 23 | | |
| Festival | 16 | 18 | 12 | 25 | | |
| Festival | 17 | 18 | 13 | 24 | | |
| Saga | 17 | 17 | 11 | 23 | | |
| Saga | 18 | 17 | 13 | 23 | 30 | |
| | 348 | 354 | 253 | 464 | 1419 | 739.5 |

Competing Districts :

Commodities Eliminated :

| | | | | | |
|--------------------|------------------------|-----|-----|-----|-----|
| 4. SOUTHERN N.S.W. | Edible Dry Shell Beans | ... | ... | ... | 30 |
| | Sugar Cane | ... | ... | ... | 320 |
| | Tobacco | ... | ... | ... | 150 |
| | Tropical Fruits | ... | ... | ... | 125 |
| TOTAL | | | | | 625 |
| 5. WESTERN N.S.W. | Edible Dry Shell Beans | ... | ... | ... | 30 |
| | Ginger | ... | ... | ... | 40 |
| | Rice | ... | ... | ... | 45 |
| | Sugar Cane | ... | ... | ... | 320 |
| | Tropical Fruits | ... | ... | ... | 125 |
| TOTAL | | | | | 560 |

Section 10-AGRICULTURE

(CONTINUED)

Where the class numbers do not run consecutively, it is an indication that no entries were received for those classes which have been deleted.

SPECIAL AGRICULTURE REGULATIONS.

Exhibitors are reminded that the Society's General Regulations apply to all sections of the Show and that the Special Regulations hereunder set out which apply to this section only are merely supplementary to the General Regulations.

CEREALS-ROOTS, ETC.-HAY, GRASSES, FODDER-BEES, HONEY, AND WAX.

All produce must have been raised during the current season or during the immediately preceding season. Wheat must be the current season's.

All exhibits in this section to be the PROPERTY OF AND GROWN BY THE EXHIBITOR.

Exhibitors will be allowed ONE ENTRY only of any one variety in each Class (except where otherwise provided).

Judging to commence at 10 a.m., Thursday, 22nd March.

CONSIGNMENT OF EXHIBITS.

Exhibits for individual classes must not be consigned with those for the District Exhibits.

NOVICE CLASSES.

A Novice, unless otherwise specified, shall be an exhibitor who has never won a first prize in the open classes for the same produce at any Royal Show.

Arrival and Departure of Exhibits.

Exhibitors must despatch exhibits other than Wheat to reach the Showground not later than 9 a.m. on Wednesday, 21st March. All packages must be addressed to the Director of the Royal Agricultural Society of N.S.W., and must bear the name and address of the exhibitor. Freight on exhibits sent by boat shall be borne by the exhibitor on both the forward and return journey.

Delivery of exhibits will commence at 5 p.m., Tuesday, 3rd April.

WHEAT

Judges :

Stewards :

Quality :
 C. Walkden-Brown, Department of Agriculture, N.S.W., Sydney.
 E. E. Bond, G. McCorquodale, S. L. Macindoe

Milling :
 J. R. Fisher, Department of Agriculture, N.S.W., Sydney.
 E. H. Jacob, G. McCorquodale
 L. Jones, Department of Agriculture, N.S.W., Sydney.

Classes 7 to 19 :
 L. Jones, H. Lamb, Southern Cross Flour Mills, Newtown, Sydney.
 J. R. Fisher, C. Walkden-Brown

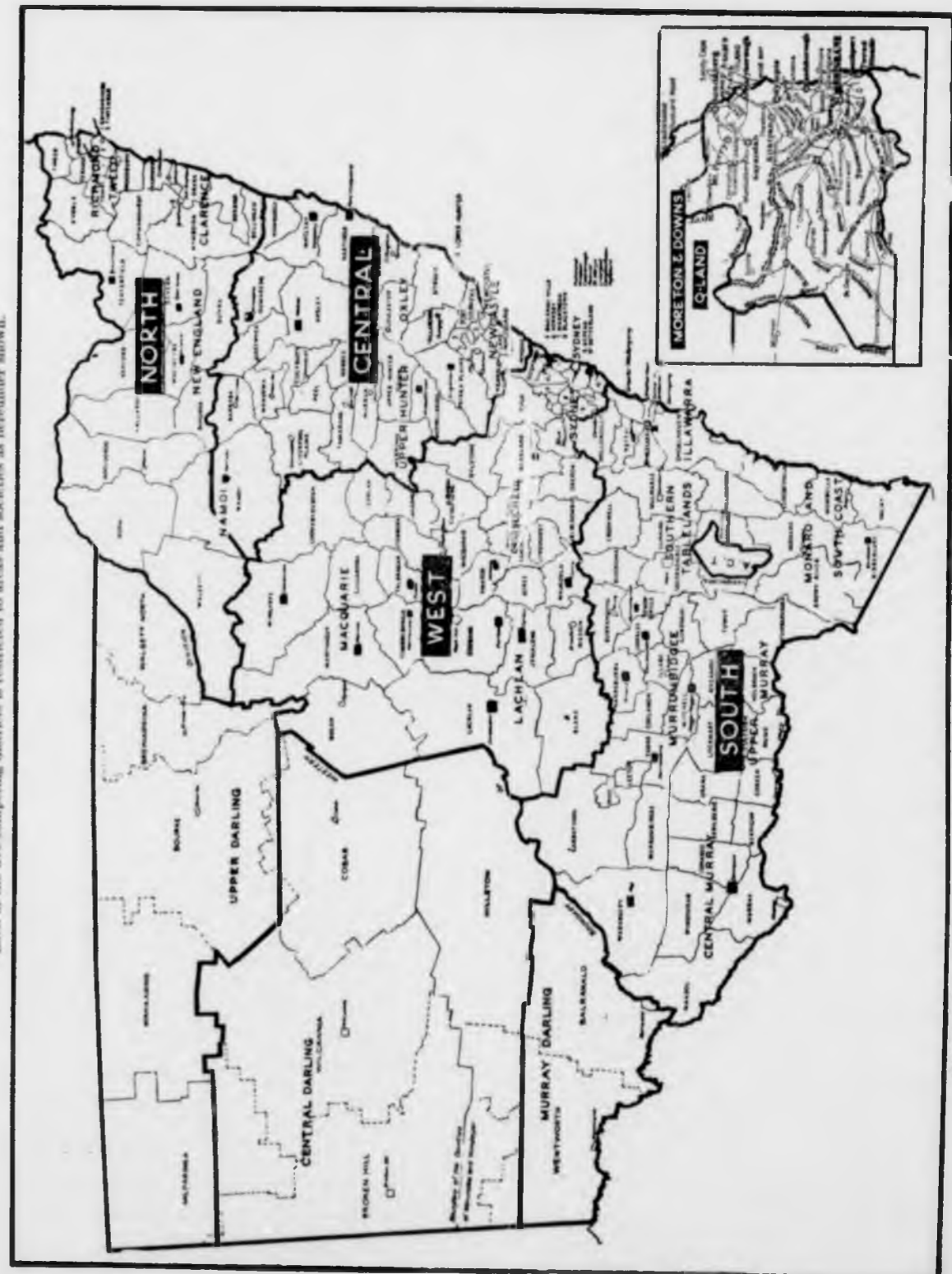
STRONG WHEATS.

(See Page 10-17 for classification of Wheat Varieties and Recommended Areas.)

OF THE PRIZE MONEY IN WHEAT CLASSES £275 HAS BEEN PRESENTED BY THE N.S.W. FLOUR MILLERS' COUNCIL.

CLASS 1-Commonwealth Champion Prize-(Special)-£20; second, £5. For the best sample (60lb. but not exceeding 65lb.) of Strong Wheat, open to growers in any part of Australia of 100 acres for grain, and to the first prize winners in Classes 2, 3, 4, and 5. Sample submitted to be from an area of not less than fifty (50) acres (Class 3 excepted) of the variety.

6. BRUCE, J. E. Variety: Festival; grown at Wongarbone, N.S.W., on black self-mulching soil; seed per acre, 60lb.; yield per acre, 37 bushels.



NOTE.-Sydney and its environs-viz., within ten miles of the G.P.O.-are not to be included in any of the above Districts. No produce of any State institution may be included in any exhibit.

Sec. 10—AGRICULTURE—Wheat (Continued)

7. CRONK, V. F. and F. A. Variety: Scimitar; grown at Borse Creek, N.S.W., on red loam; seed per acre, 60lb.; yield per acre, 24 bushels.
8. HAYNE, V. Variety: Charter; grown at Narrabri, N.S.W., on red and chocolate loam; seed per acre, 45lb.; yield per acre, 36 bushels.
9. JONES, C. S. and G. B. Variety: Festival; grown at Mendooran, N.S.W., on medium red loam; seed per acre, 50lb.; yield per acre, 21½ bushels.
10. PENFOLD, R. Variety: Festival; grown at Quandialla, N.S.W., on heavy black self-mulching soil; seed per acre, 60lb.; yield per acre, 33 bushels.
11. TONKIN, E. A. Variety: Festival; grown at North Star, N.S.W., on grey loam; seed per acre, 39lb.; yield per acre, 30 bushels.
12. TONKIN, W. E. Variety: Festival; grown at Pallamallawa, N.S.W., on grey loam; seed per acre, 45lb.; yield per acre, 30 bushels.
13. WALL, J. W. Variety: Festival; grown at Narrabri, N.S.W., on chocolate loam; seed per acre, 41lb.; yield per acre, 24 bushels.

CLASS 2—(Special Prizes)—First, £12; second, £8; third, £5; presented by The N.S.W. Flour Millers' Council, for the best sample (60lb. but not exceeding 65lb.) of CAILLOUX or CHARTER. Sample to be submitted from an area of not less than fifty (50) acres of the variety. Wheat to be grown in any part of New South Wales.

14. CHRISTIE BROS. Variety: Cailloux; grown at Boggabri, N.S.W., on red soil; seed per acre, 42lb.; yield per acre, 24 bushels.
15. HAYNE, V. Variety: Charter; grown at Narrabri, N.S.W., on red and chocolate loam; seed per acre, 45lb.; yield per acre, 36 bushels.

CLASS 3—(Special Prizes)—First, £12; second, £8; third, £5; for the best sample (60lb. but not exceeding 65lb.) of FESTIVAL or SAGA. Sample to be submitted from an area of not less than ten (10) acres of the variety. Wheat to be grown in any part of N.S.W. Prize money presented by The N.S.W. Flour Millers' Council.

16. BROWN, S. R. and A. E. Variety: Festival; grown at Mendooran, N.S.W., on heavy self-mulching soil; seed per acre, 52lb.; yield per acre, 35 bushels.
17. BRUCE, J. E. Variety: Festival; grown at Wongarbron, N.S.W., on black self-mulching soil; seed per acre, 60lb.; yield per acre, 37 bushels.
18. CHRISTIE BROS. Variety: Festival; grown at Boggabri, N.S.W., on red soil; seed per acre, 42lb.; yield per acre, 24 bushels.
19. JONES, C. S. and G. B. Variety: Festival; grown at Mendooran, N.S.W., on medium red loam; seed per acre, 50lb.; yield per acre, 21½ bushels.
20. McDONALD, N. Variety: Festival; grown at Mulwala, N.S.W., on red loam; seed per acre, 60lb.; yield per acre, 27 bushels.
21. McGOWAN, V. B. Variety: Festival; grown at Winton, N.S.W., on chocolate self-mulching soil; seed per acre, 55lb.; yield per acre, 27 bushels.

22. PENFOLD, R. Variety: Festival; grown at Quandialla, N.S.W., on heavy black self-mulching soil; seed per acre, 60lb.; yield per acre, 33 bushels.
23. SHARP, L. J. Variety: Festival; grown at Gilgandra, N.S.W., on red loam; seed per acre, 56lb.; yield per acre, 22 bushels.
24. TONKIN, E. A. Variety: Festival; grown at North Star, N.S.W., on grey loam; seed per acre, 39lb.; yield per acre, 30 bushels.
25. TONKIN, W. E. Variety: Festival; grown at Pallamallawa, N.S.W., on grey loam; seed per acre, 45lb.; yield per acre, 30 bushels.
26. WALL, J. W. Variety: Festival; grown at Narrabri, N.S.W., on chocolate loam; seed per acre, 41lb.; yield per acre, 24 bushels.

CLASS 4—(Special Prizes)—First, £15; second, £8; third, £2. Of the prize money £10 has been presented by The Farmers and Graziers' Co-op. Grain, Insurance and Agency Co., Ltd., Circular Quay, Sydney, for the best sample (60lb. but not exceeding 65lb.) of Strong White Wheat. Open only to growers who have competed in the 1955 local Field Wheat Competitions conducted in conjunction with the R.A.S. Wheat entered in this class must be portion of the 50 acres entered in the local Field Wheat Competition.

27. McDONALD, N. Variety: Festival; grown at Mulwala, N.S.W., on red loam; seed per acre, 60lb.; yield per acre, 27 bushels.
28. PENFOLD, R. Variety: Festival; grown at Quandialla, N.S.W., on heavy black self-mulching soil; seed per acre, 60lb.; yield per acre, 33 bushels.
29. TONKIN, E. A. Variety: Festival; grown at North Star, N.S.W., on grey loam; seed per acre, 39lb.; yield per acre, 30 bushels.
30. TONKIN, W. E. Variety: Festival; grown at Pallamallawa, N.S.W., on grey loam; seed per acre, 45lb.; yield per acre, 30 bushels.

NOVICE CLASS.

CLASS 5—(Special Prizes)—First, £10; second, £5; third, £2; for the best sample (60 lb. but not exceeding 65lb.) of any Strong Wheat. Sample submitted to be from an area of not less than fifty (50) acres of the variety. Open to growers in any part of Australia who have not won a prize for Strong Wheat at any previous Royal Show in Sydney, Melbourne, Adelaide, Perth, or Brisbane.

31. BROWN, S. R. and A. E. Variety: Festival; grown at Mendooran, N.S.W., on heavy self-mulching soil; seed per acre, 52lb.; yield per acre, 35 bushels.
32. JONES, C. S. and G. B. Variety: Festival; grown at Mendooran, N.S.W., on medium red loam; seed per acre, 50lb.; yield per acre, 21½ bushels.
33. McDONALD, N. Variety: Festival; grown at Mulwala, N.S.W., on red loam; seed per acre, 60lb.; yield per acre, 27 bushels.
34. McGOWAN, V. B. Variety: Festival; grown at Winton, N.S.W., on chocolate self-mulching soil; seed per acre, 55lb.; yield per acre, 27 bushels.

Sec. 10—AGRICULTURE—Wheat (Continued)

35. SHARP, L. J. Variety: Festival; grown at Gilgandra, N.S.W., on red loam; seed per acre, 56lb.; yield per acre, 22 bushels.
36. TONKIN, E. A. Variety: Festival; grown at North Star, N.S.W., on grey loam; seed per acre, 39lb.; yield per acre, 30 bushels.
37. WILSON, J. T. Variety: Festival; grown at Peak Hill, N.S.W., on red loam; seed per acre, 60lb.; yield per acre, 32 bushels.

MEDIUM STRONG WHEATS.

CLASS 6—Commonwealth Champion Prize (Special) £27, of which £20 is presented by General Motors-Holdens, Ltd., Bunnerong-rd., Page-wood, Sydney; second, £5; for the best sample (60lb. but not exceeding 65lb.) of Medium Strong White Wheat, open to growers in any part of Australia of 100 acres for grain. First prize winners in Classes 7 to 19 inclusive shall compete automatically for this prize without entry. Sample submitted to be from an area of not less than fifty (50) acres of the variety.

38. BROWN, J. T. and R. D. Variety: Celebration; grown at Narrabri, N.S.W., on red loam; seed per acre, 45lb.; yield per acre, 30 bushels.
39. BRUCE, J. E. Variety: Celebration; grown at Wongarbron, N.S.W., on red soil; seed per acre, 60lb.; yield per acre, 33 bushels.
40. BRUCE, J. E. Variety: Kende; grown at Wongarbron, N.S.W., on red soil; seed per acre, 60lb.; yield per acre, 34 bushels.
41. CRONK, V. F. and F. A. Variety: Dirk; grown at Borse Creek, N.S.W., on red loam and gravel; seed per acre, 50lb.; yield per acre, 24 bushels.
42. CRONK, V. F. and F. A. Variety: Ford; grown at Borse Creek, N.S.W., on red loam; seed per acre, 60lb.; yield per acre, 27 bushels.
43. HAYNE, V. Variety: Spica; grown at Narrabri, N.S.W., on red and chocolate loam; seed per acre, 45lb.; yield per acre, 36 bushels.
44. PICKERING, R. J. Variety: Gabo; grown at Bundella, N.S.W., on heavy self-mulching chocolate loam; seed per acre, 34lb.; yield per acre, 53 bushels.
45. TONKIN, W. E. Variety: Gabo; grown at Pallamallawa, N.S.W., on grey loam; seed per acre, 45lb.; yield per acre, 32 bushels.

(2)

61. CHRISTIE BROS. & CLASS 10 BREAD WHEATS.

(SPECIAL PRIZES)—£225, PRESENTED BY THE N.S.W. FLOUR MILLERS' COUNCIL FOR CLASSES 7 TO 16 INCLUSIVE.

Classes 7 to 16 inclusive are for Wheats capable of producing flour from which a satisfactory commercial loaf of bread can be baked.

CLASS 7—(Special Prizes)—First, £12; second, £8; third, £5; for the best sample (60lb. but not exceeding 65lb.) of GABO. Sample submitted to be from an area of not less than fifty (50) acres of the variety. Wheat to be grown in any part of New South Wales. Prize money presented by The N.S.W. Flour Millers' Council.

46. BROWN, S. R. and A. E. Grown at Mendooran, N.S.W., on heavy self-mulching soil; seed per acre, 50lb.; yield per acre, 45 bushels.
47. BUCKIE PASTORAL CO., and C. MAY. Grown at Croppa Creek, N.S.W., on medium dark chocolate self-mulching soil; seed per acre, 42lb.; yield per acre, 53 bushels.
48. CAMERON, D. F. Grown at Bomera, N.S.W., on variable red loam; seed per acre, 46lb.; yield per acre, 22 bushels.
49. PICKERING, R. J. Grown at Bundella, N.S.W., on heavy self-mulching chocolate loam; seed per acre, 34lb.; yield per acre, 53 bushels.
50. TONKIN, W. E. Grown at Pallamallawa, N.S.W., on grey loam; seed per acre, 45lb.; yield per acre, 32 bushels.
51. TROY, V. W. R. Grown at Quandialla, N.S.W., on heavy black soil and red ridge; seed per acre, 60lb.; yield per acre, 48 bushels.
52. WORBOYS, B. C. and L. G. Grown at Gunnedah, N.S.W., on self-mulching black soil; seed per acre, 55lb.; yield per acre, 43 bushels.

CLASS 8—(Special Prizes)—First, £12; second, £8; third, £5; for the best sample (60lb. but not exceeding 65lb.) of KENDEE. Sample submitted to be from an area of not less than fifty (50) acres of the variety. Wheat to be grown in any part of New South Wales. Prize money presented by The N.S.W. Flour Millers' Council.

53. BRUCE, J. E. Grown at Wongarbron, N.S.W., on red soil; seed per acre, 60lb.; yield per acre, 34 bushels.
54. CAMERON, D. F. Grown at Bomera, N.S.W., on variable red loam; seed per acre, 46lb.; yield per acre, 25 bushels.
55. CHRISTIE BROS. Grown at Boggabri, N.S.W., on red soil; seed per acre, 42lb.; yield per acre, 32 bushels.
56. DOHNT, and SON. Grown at Eumungerie, N.S.W., on heavy loam; seed per acre, 45lb.; yield per acre, 31 bushels.
57. PFITZNER, G. C. and SON. Grown at Goolgowi, N.S.W., on heavy red loam; seed per acre, 45lb.; yield per acre, 39 bushels.

CLASS 9—(Special Prizes)—First, £12; second, £8; third, £5; for the best sample (60lb. but not exceeding 65lb.) of CELEBRATION. Sample submitted to be from an area of not less than fifty (50) acres of the variety. Wheat to be grown in any part of New South Wales. Prize money presented by The N.S.W. Flour Millers' Council.

58. BROWN, J. T. and R. D. Grown at Narrabri, N.S.W., on red loam; seed per acre, 45lb.; yield per acre, 30 bushels.
59. BRUCE, J. E. Grown at Wongarbron, N.S.W., on red soil; seed per acre, 60lb.; yield per acre, 33 bushels.
60. CHRISTIE BROS. Grown at Boggabri, N.S.W., on red soil; seed per acre, 42lb.; yield per acre, 27 bushels.

No Third Award

CLASS 10—(Special Prizes)—First, £12; second, £8; third, £5; for the best sample (60lb. but not exceeding 65lb.) of FORD. Sample submitted to be from an area of not less than fifty (50) acres of the variety. Wheat to be grown in any one of the following zones—Nos. 1, 2, and 3, as defined by the Department of Agriculture, N.S.W.—See pages 10-17 and 10-18. Prize money presented by The N.S.W. Flour Millers' Council.

61. CHRISTIE BROS. Grown at Boggabri, N.S.W., on red soil; seed per acre, 42lb.; yield per acre, 24 bushels.

CLASS 11—(Special Prizes)—First, £12; second, £8; third, £5; for the best sample (60lb. but not exceeding 65lb.) of FORD. Sample submitted to be from an area of not less than fifty (50) acres of the variety. Wheat to be grown in any one of the following zones—Nos. 4, 5, 6, 7, 8, and 9, as defined by the Department of Agriculture, N.S.W.—See pages 10-17 and 10-18. Prize money presented by The N.S.W. Flour Millers' Council.

62. CRONK, V. F. and F. A. Grown at Boree Creek, N.S.W., on red loam; seed per acre, 60lb.; yield per acre, 27 bushels.

63. HEINRICH, A. A. Grown at Temora, N.S.W., on medium heavy soil; seed per acre, 60lb.; yield per acre, 40 bushels.

64. JOHNSON, R. R., and SON. Grown at Birangan, N.S.W., on heavy red loam; seed per acre, 60lb.; yield per acre, 37 bushels.

65. RODWAY BROS. Grown at Temora, N.S.W., on clay; seed per acre, 60lb.; yield per acre, 24 bushels.

Note: Classes 12 to 16 inclusive have been provided with a view to encouraging new varieties in Southern and Western Districts.

(Special Prizes)—£15, viz. First, £10; second, £5, presented by the Bread Manufacturers of N.S.W., 90 Pitt-st., Sydney, for the best sample of bread making wheat grown in Zones 5 to 12. Open only to growers who have competed in the 1955 Local Field Wheat Competitions conducted in conjunction with the R.A.S. Wheat must be portion of the 50 acres entered in the Local Field Wheat Competition.

CLASS 12—(Special Prizes)—First, £12; second, £8; third, £5; for the best sample (60lb. but not exceeding 65lb.) of GABO. Sample submitted to be from an area of not less than fifty (50) acres of the variety. Wheat to be grown in any one of the following zones—Nos. 5 and 6, as defined by the Department of Agriculture, N.S.W.—See pages 10-17 and 10-18. Prize money presented by the N.S.W. Flour Millers' Council.

66. BROWN, S. R. and A. E. Grown at Mendooran, N.S.W., on heavy self-mulching soil; seed per acre, 50lb.; yield per acre, 45 bushels.

67. CAMERON, D. F. Grown at Bomera, N.S.W., on variable red loam; seed per acre, 46lb.; yield per acre, 22 bushels.

LYSAGHT'S

100 PER CENT. AUSTRALIAN MADE
WIRE NETTING
ZINC OXIDE FENCING
AND OTHER WIRES



Our Netting and Other Products are known throughout the Commonwealth as of the Highest Standard

OBTAINABLE FROM ALL LEADING MERCHANTS AND STOREKEEPERS

Look for our Marker in every Roll of Netting



Manufactured by
**LYSAGHT BROS. & CO.
PTY. LTD.**

Registered Office & Works: Blackwall Pt. Road, Chiswick, Five Dock.

CLASS 13—(Special Prizes)—First, £15; second, £5, presented by Bread Manufacturers of N.S.W., 90 Pitt-st., Sydney, for the best sample (60lb. but not exceeding 65lb.) of GABO. Open only to growers who have competed in the 1955 Local Field Wheat Competitions conducted in conjunction with the R.A.S. Wheat entered in this class must be portion of the 50 acres entered in the Local Field Wheat Competition.

68. PICKERING, R. J. Grown at Bundella, N.S.W., on heavy self-mulching chocolate loam; seed per acre, 34lb.; yield per acre, 53 bushels.

69. TROY, V. W. R. Grown at Quandialla, N.S.W., on heavy black soil and red ridge; seed per acre, 60lb.; yield per acre, 48 bushels.

Only award
CLASS 14—(Special Prizes)—First, £12; second, £8; third, £5; for the best sample (60lb. but not exceeding 65lb.) of KENDEE. Sample submitted to be from an area of not less than fifty (50) acres of the variety. Wheat to be grown in any one of the following zones—Nos. 4, 5, 6, 8, 9, 10, and 11 inclusive as defined by the Department of Agriculture, N.S.W.—See pages 10-17 and 10-18. Prize money presented by The N.S.W. Flour Millers' Council.

70. BRUCE, J. E. Grown at Wongarbron, N.S.W., on red soil; seed per acre, 60lb.; yield per acre, 34 bushels.

71. CAMERON, D. F. Grown at Bomera, N.S.W., on variable red loam; seed per acre, 46lb.; yield per acre, 25 bushels.

72. PFITZNER, G. C., and SON. Grown at Goolgowi, N.S.W., on heavy red loam; seed per acre, 45lb.; yield per acre, 39 bushels.

Only award
CLASS 15—(Special Prizes)—First, £12; second, £8; third, £5; for the best sample (60lb. but not exceeding 65lb.) of CELEBRATION. Sample submitted to be from an area of not less than fifty (50) acres of the variety. Wheat to be grown in any one of the following zones—Nos. 4 to 11 inclusive, as defined by the Department of Agriculture, N.S.W.—See pages 10-17 and 10-18. Prize money presented by The N.S.W. Flour Millers' Council.

73. BRUCE, J. E. Grown at Wongarbron, N.S.W., on red soil; seed per acre, 60lb.; yield per acre, 33 bushels.

Only award
CLASS 16—(Special Prizes)—First, £12; second, £8; third, £5; for the best sample (60lb. but not exceeding 65lb.) of JAVELIN, CURLEW, KONDUT, WONGOONDI, or DIRK. Samples submitted to be from an area of not less than ten (10) acre of the variety. Wheat to be grown in any one of the following zones—Nos. 7 to 12 inclusive, as defined by the Department of Agriculture, N.S.W.—See pages 10-17 and 10-18. Prize money presented by The N.S.W. Flour Millers' Council.

74. CRONK, V. F. and F. A. Variety: Dirk; grown at Boree Creek, N.S.W., on red loam and gravel; seed per acre, 50lb.; yield per acre, 24 bushels.

75. McDONALD, N. Variety: Curlew; grown at Mulwala, N.S.W., on red loam; seed per acre, 60lb.; yield per acre, 24 bushels.

Only award
CLASS 17—(Special Prizes)—First, £10; second, £5; third, £2; for the best sample (60lb. but not exceeding 65lb.) of BORDAN or KOALA. Sample submitted to be from an area of not less than fifty (50) acres of the variety. Wheat to be grown in areas recommended by the Department of Agriculture, N.S.W.

76. BALCOMB, H. N. and U. J. Variety: Bordan; grown at Toogong, N.S.W., on sandy loam; seed per acre, 50lb.; yield per acre, 41 bushels.

77. HENLEY, T. E. Variety: Bordan; grown at Cowra, N.S.W., on red loam; seed per acre, 60lb.; yield per acre, 39 bushels.

78. JOHNSON, R. R., and SON. Variety: Bordan; grown at Birangan, N.S.W., on heavy red loam; seed per acre, 60lb.; yield per acre, 33 bushels.

Only award
CLASS 18—(Special Prizes)—First, £12; second, £8; third, £5; for the best sample (60lb. but not exceeding 65lb.) of Medium Strong Wheat. Open only to growers who have competed in the 1955 local Field Wheat Competitions conducted in conjunction with the R.A.S. Wheat entered in this class must be portion of the 50 acres entered in the local Field Wheat Competition.

79. BALCOMB, H. N. and U. J. Variety: Bordan; grown at Toogong, N.S.W., on sandy loam; seed per acre, 50lb.; yield per acre, 41 bushels.

80. BARKER, E. J. H. Variety: Curlew; grown at Walbundrie, N.S.W., on red loam to heavy soil; seed per acre, 66lb.; yield per acre, 36 bushels.

81. BECK, J. A. Variety: Kendee; grown at Harefield, N.S.W., on granite soil; seed per acre, 70lb.; yield per acre, 36 bushels.

82. BOLGER, E. A., and D. TICEHURST. Variety: Ford; grown at Wallendbeen, N.S.W., on red to grey loam; seed per acre, 68lb.; yield per acre, 48 bushels.

83. HAYNE, V. Variety: Spica; grown at Narrabri, N.S.W., on red and chocolate loam; seed per acre, 45lb.; yield per acre, 36 bushels.

84. HEINRICH, A. A. Variety: Ford; grown at Temora, N.S.W., on medium heavy soil; seed per acre, 60lb.; yield per acre, 40 bushels.

85. HENLEY, T. E. Variety: Bordan; grown at Cowra, N.S.W., on red loam; seed per acre, 60lb.; yield per acre, 39 bushels.

86. JOHNSON, C. R. Variety: Bordan; grown at Yeoval, N.S.W., on red loam; seed per acre, 58lb.; yield per acre, 52 bushels.

87. JOHNSON, R. R., and SON. Variety: Ford; grown at Birangan, N.S.W., on heavy red loam; seed per acre, 60lb.; yield per acre, 37 bushels.

88. PFITZNER, G. C., and SON. Variety: Kendee; grown at Goolgowi, N.S.W., on heavy red loam; seed per acre, 45lb.; yield per acre, 39 bushels.

89. ROBERTS, E. E., and S. AMEY. Variety: Kendee; grown at Dubbo, N.S.W., on red loam; seed per acre, 40lb.; yield per acre, 39 bushels.
90. SIMPSON, F. J. Variety: Bordan; grown at Parkes, N.S.W., on red soil; seed per acre, 60lb.; yield per acre, 46 bushels.

NOVICE CLASS.

CLASS 19—(Special Prizes)—First, £10; second, £5; third, £2; of which £5 5s. is presented by "The Land" Newspaper Co., Ltd., Sydney, for the best sample (60lb. but not exceeding 65lb.) of Medium Strong Wheat. Sample submitted to be from an area of not less than fifty (50) acres of the variety. Wheat grown in New South Wales shall be restricted to the varieties specified in classes 7 to 11 inclusive and Class 17. Open to growers in any part of Australia who have not won a prize for Medium Strong Wheat at any previous Royal Show in Sydney, Melbourne, Adelaide, Perth or Brisbane.

91. BALCOMB, H. N. and U. J. Variety: Bordan; grown at Toogong, N.S.W., on sandy loam; seed per acre, 50lb.; yield per acre, 41 bushels.
92. HENLEY, T. E. Variety: Bordan; grown at Cowra, N.S.W., on red loam; seed per acre, 60lb.; yield per acre, 39 bushels.
93. PICKERING, R. J. Variety: Gabo; grown at Bundella, N.S.W., on heavy self-mulching chocolate loam; seed per acre, 34lb.; yield per acre, 53 bushels.
94. TROY, V. W. R. Variety: Gabo; grown at Quandialla, N.S.W., on heavy black soil and red ridge; seed per acre, 60lb.; yield per acre, 48 bushels.
95. WILBY, C. F. and C. M. Variety: Gabo; grown at Crooble, N.S.W., on chocolate soil; seed per acre, 45lb.; yield per acre, 51 bushels.
96. WORBOYS, B. C. and L. G. Variety: Gabo; grown at Gunnedah, N.S.W., on self-mulching black soil; seed per acre, 55lb.; yield per acre, 43 bushels.

WEAK WHEATS.

CLASS 20—(Special Prizes)—First, £7; second, £3; for the best sample (80lb. but not exceeding 65lb.) of Weak Wheat. Sample submitted to be from an area of not less than fifty (50) acres of the variety. Wheat to be grown in areas recommended by the Department of Agriculture, N.S.W.

97. CHRISTIE BROS. Variety: Glenwari; grown at Boggabri, N.S.W., on red soil; seed per acre, 42lb.; yield per acre, 30 bushels.
98. WARD, B. T. Variety: Bencubbin; grown at Tullamore, N.S.W., on light black soil; seed per acre, 50lb.; yield per acre, 30 bushels.

CLASS 21—(Special Prizes)—First, £7; second, £3; for the best sample (60lb. but not exceeding 65lb.) of Weak Wheat. Open only to growers who have competed in the 1955 local Field Wheat Competitions conducted in conjunction

with the R.A.S. Wheat entered in this class must be portion of the 50 acres entered in the local Field Wheat Competition.

99. WARD, B. T. Variety: Bencubbin; grown at Tullamore, N.S.W., on light black soil; seed per acre, 50lb.; yield per acre, 30 bushels.

Scale of Points for Judging Above Classes.

| | | | | |
|---|-----|-----|-----|--------|
| (a) On Grain:— | ... | ... | ... | Points |
| Weight per bushel | ... | ... | ... | 25 |
| Appearance of grain | ... | ... | ... | 20 |
| Uniformity and type | ... | ... | ... | 20 |
| Freedom from disease, pests, and foreign odours | ... | ... | ... | 15 |
| | | | | — 80 |
| (b) On Milling:— | | | | |
| Milling Quality | ... | ... | ... | 30 |
| Colour of Flour | ... | ... | ... | 10 |
| Gluten Quality | ... | ... | ... | 60 |
| Gluten Content | ... | ... | ... | 65 |
| Water Absorption | ... | ... | ... | 20 |
| | | | | — 185 |
| Total | ... | ... | ... | 265 |

N.S.W. CLASSIFICATION OF WHEAT VARIETIES.

Varieties underlined are those recommended by the Standing Advisory Committee.

Any new variety may be added to the stated varieties.

*Indicates Farrer and Department of Agriculture, N.S.W. varieties.

†Indicates varieties developed at the University of Sydney.

STRONG WHITE WHEATS.

| | |
|------------|---------|
| Cailloux | Pusa 4. |
| *Charter. | †Saga. |
| *Festival. | *Yalta. |
| Pusa 111. | |

MEDIUM STRONG WHEATS.

| | |
|---------------|----------|
| Bordan. | †Kendee. |
| *Celebration. | *Koala. |
| Ford. | Spica. |
| †Gabo. | Warigo. |
| *Gular. | |

WEAK FLOUR WHEATS.

| | |
|------------|-----------|
| Bencubbin. | Pinnacle. |
| Glenwari. | Quadrat. |
| Insignia. | *Waratah. |
| Nabawa. | |

INTERSTATE GROWERS.

Wheat varieties submitted by Interstate growers shall be restricted to those recommended by the Department of Agriculture in their own States.

RECOMMENDED AREAS IN N.S.W.

Zone 1: Northern Tablelands.

(Tenterfield, Glen Innes, Armidale.)

Mid-season Sowing—Celebration, Warigo, Ford.
Late Sowing—Gabo, Charter.

Zone 2: North-western Slopes.

(Inverell, Tamworth, Quirindi, Boggabri, Gunnedah.)

Early Sowing—Ford, Celebration.
Mid-season Sowing—Warigo.
Late Sowing—Charter, Gabo, Festival, Spica.

Zone 3: North-western Plains.

(Garah, Moree, Wee Waa, Narrabri, Pilliga.)

Early Sowing—Ford, Celebration.
Mid-season Sowing—Warigo.
Late Sowing—Charter, Gabo, Festival, Spica.

Zone 4: Central Tablelands.

(Bathurst, Orange, Molong, Manildra, Blayney)

Early Sowing—Ford, Bordan, Celebration.
Mid-season Sowing—Bencubbin, Kendee, Warigo.
Late Sowing—Koala.

Zone 5: Central-western Slopes.

(Coonabarabran, Dunedoo, Wellington, Parkes, Forbes, Grenfell, Cowra.)

Early Sowing—Ford, Bordan, Celebration.
Mid-season Sowing—Bencubbin, Kendee.
Late Sowing—Gabo, Koala.

Zone 6: Central-western Plains—Northern Portion.

(Baradine, Gilgandra, Dubbo, Narromine, Peak Hill, Trundle, Bogan Gate.)

Early Sowing—Celebration, Ford.
Mid-season Sowing—Bencubbin, Kendee.
Late Sowing—Gabo, Festival, Koala.

Zone 7: Southern Tablelands.

(Boorowa, Goulburn, Yass, A.C.T., Cooma, Tumut.)

Early Sowing—Bordan, Ford.
Mid-season Sowing—Bencubbin, Celebration.
Late Sowing—Gabo.

Zone 8: South-western Slopes—Eastern Portion.

(Young, Cootamundra, Junee, Wagga, Culeairn, Albury, Corowa.)

Early Sowing—Bordan, Ford, Celebration.
Mid-season Sowing—Bencubbin, Kendee.
Late Sowing—Koala, Gabo.

Zone 9: South-western Slopes—Western Portion.

(Quandialla, Barmednan, Ariah Park, Temora, Coolamon, Lockhart.)

Early Sowing—Bordan, Ford, Celebration.
Mid-season Sowing—Bencubbin, Kendee.
Late Sowing—Gabo, Koala.

THE
UNITED
INSURANCE
COMPANY LIMITED



Service Security

Insure Your Property
with an Australian
Company

Established 1862

HEAD OFFICE:

George and Hunter Streets, Sydney.

with Branches throughout Australia and
New Zealand.

Board of Directors:

- J. W. DUNLOP (Chairman)
E. R. KNOX, ORWELL PHILLIPS,
R. J. VICARS, A. H. DICKINS,
G. GORDON RUSSELL

General Manager: J. K. WILLIAMS

FIRE, MARINE & ACCIDENT

Insurances of Every Description

N.S.W. & A.C.T. Branches and District
Offices:

Sydney, Burwood, Chatswood, Manly, North
Sydney, Parramatta, Canberra, Dubbo, Lismore,
Maitland, Newcastle, Orange, Tamworth, Wagga,
Wollongong, Albury, Barraba, Broken Hill, Gos-
ford, Goulburn, Grafton, Inverell, Lithgow,
Narrandera, Parkes, Taree, Young.



**COST PER UNIT
BECOMES
THE FACTOR!**

Superphosphate plays its part in the establishment and maintenance of improved pastures—and when coupled with efficient management can mean greater production at a lower unit cost.

An advisory service is always available

SHIRLEYS & SULPHIDE
Fertilizers
Distributed by
AUSTRALIAN FERTILIZERS LIMITED
(Incorp. in Victoria) 5 Macquarie Place, Sydney

**Zone 10: Central Plains—Southern Portion;
Riverina—Northern Portion.**
(Tottenham, Condobolin, Lake Cargelligo, Hillston, Wyalong, Borellan.)
Early to Mid-season Sowing—Celebration, Bencubbin, Kendee.
Late Sowing—Gabo, Koala.

Zone 11: Riverina—Eastern Portion.
(Narrandera, Urana, Deniliquin, Berrigan, Daysdale.)
Early Sowing—Celebration, Pinnacle.
Mid-season Sowing—Bencubbin, Kendee.
Late Sowing—Gabo, Insignia.

Zone 12: Riverina—Western Portion.
(Moulamein, Balranald, Euston.)
Early to Mid-season Sowing—Bencubbin, Pinnacle.
Late Sowing—Gabo, Insignia.

Zone 13: Irrigation Areas.
(Murrumbidgee Irrigation Area: Wakool and Berriquin Irrigation districts.)
Early Sowing—Bordan, Ford, Pinnacle.
Mid-season Sowing—Bencubbin, Celebration.
Late Sowing—Gabo, Insignia.

OATS

| | |
|---|-----------------|
| <i>Judge:</i> | <i>Steward:</i> |
| A. Pearson, Department of Agriculture, N.S.W., Sydney. | J. Collie |

To be judged on the following scale of points:—

| | Points |
|--|------------|
| (a) Size, plumpness and uniformity ... | 40 |
| (b) Appearance (thinness of hull, freedom from damaged or broken grains and free kernels) ... | 15 |
| (c) Trueness to type ... | 15 |
| (d) Freedom from foreign matter, pests, and odours ... | 15 |
| (e) Bushel weight (allow 10 points for 38lb. and add or subtract 1/4 point for every 1lb. above or below this standard as the case may be) ... | 15 |
| Total ... | 100 |

- CLASS 25—Oats, Milling, light coloured, any variety, white, cream, or yellow, 1 bushel. First, £2; second, £1; third, 10/-.**
- 100.3 McClelland, J. J. 102. Rowlings, R.
101. McDonald, N. 103. Smart, L.
- CLASS 26—Oats, Milling, brown (dun or black varieties objectionable), 1 bushel. First, £2; second, £1; third, 10/-.**
104. McClelland, J. J. 106. Watt, N.
105. Rowlings, R. 107. Watt, N.

- Special Prize—£10, presented by the Farmers and Grazers' Co-op. Grain, Insurance, and Agency Co., Ltd., Circular Quay, Sydney, for the best bushel of Milling Oats exhibited in Classes 25 and 26.**
105. CLASS 27—Oats, Algerian, 1 bushel. First, £2; second, £1; third, 10/-.
- 108.2 McClelland, J. J. 109.1 Rowlings, R.
- CLASS 28—Oats, Belar, 1 bushel. First, £2; second, £1; third, 10/-.**
- 110.3 McClelland, J. J. 112.1 Watt, N.
111.2 Rowlings, R.
- CLASS 29—Oats, Fulghum, 1 bushel. First, £2; second, £1; third, 10/-.**
- 113.1 Watt, N.
- CLASS 30—Oats, Mulga, 1 bushel. First, £2; second, £1; third, 10/-.**
- 114.1 Rowlings, R. 115. Smart, L.

MAIZE

Judges: Ears and Grain; Hybrid Maize:
L. R. Kavanagh,
Department of
Agriculture,
N.S.W., Sydney.

Stewards:
E. W. Bowmaker
P. F. Stanton

Commercial Maize:
T. J. McHugh,
103 Sussex-st.,
Sydney.

L. Judd

**SEED CLASSES.
Ears.**

- CLASS 31—Maize, Fitzroy, 10 ears. First, £3; second, £2; third, £1.**
116. Buttsworth, W. C. 120.3 Louttit, A.
117.2 Lavis, G. A. 121. Nelson, A. C.
118. Lavis, N. J. 122. Stitt, L. M.
119.1 Lavis, R. J. 123. Stitt, R. A.
- CLASS 32—Maize, Leaming, 10 ears. First, £3; second, £2; third, £1.**
124. Buttsworth, W. C. 127. Stitt, L. M.
125.2 Cameron, A. A. 128. Stitt, R. A.
126.1 Nelson, A. C.
- CLASS 33—Maize, Golden Superb, 10 ears. First, £3; second, £2; third, £1.**
- 129.3 Lavis, N. J. 132. Stitt, L. M.
130.1 Lavis, R. J. 133. Stitt, R. A.
131.2 Nelson, A. C.
- CLASS 34—Maize, Funks' Yellow Dent, 10 ears. First, £3; second, £2; third, £1.**
134. Emery, B. 135.1 Smart, L.
- CLASS 35—Maize, Wellingrove, 10 ears. First, £3; second, £2; third, £1.**
- 136.1 Smart, L.

- CLASS 36—Maize, Golden Beauty, 10 ears. First, £2; second, £1; third, 10/-.**
137. Buttsworth, W. C. 138.1 Nelson, A. C.
- CLASS 37—Maize, Golden Nugget, 10 ears. First, £2; second, £1; third, 10/-.**
- 139.1 Smart, L.
- CLASS 38—Maize, Large Red Hogan, 10 ears. First, £2; second, £1; third, 10/-.**
140. Buttsworth, W. C. 141.1 Nelson, A. C.
- CLASS 39—Maize, Manning Pride, 10 ears. First, £2; second, £1; third, 10/-.**
- 142.1 Smart, L. 144. Stitt, R. A.
143. Stitt, L. M.
- CLASS 40—Maize, any other yellow variety, 10 ears (state variety). First, £2; second, £1; third, 10/-.**
145. Buttsworth, W. C. 147.1 Saul, W. T. (G. H. 128).
Pride of Hawkesbury). 148. Stitt, L. M. (Dawson).
146.2 Louttit, A. (Early Morn). 149. Stitt, R. A. (Dawson).
- CLASS 41—Maize, Hickory King, 10 ears. First, £3; second, £2; third, £1.**
150. Emery, B. 153. Louttit, A.
151.2 Lavis, N. J. 154.1 Nelson, A. C.
152.2 Lavis, R. J.
- CLASS 42—Maize, Giant White, 10 ears. First, £3; second, £2; third, £1.**
155. Kemp, P. E. 158. Stitt, L. M.
156. Kemp, P. E. 159. Stitt, R. A.
157.1 Smart, L.
- CLASS 44—Maize, any other white variety, 10 ears (state variety). First, £2; second, £1; third, 10/-.**
160. Buttsworth, W. C. 162. Stitt, R. A. (Manning White).
(Manning White).
161. Stitt, L. M. (Manning White).
- CLASS 45—Maize, Popcorn, any variety, 10 ears. First, £2.**
- 162A Buttsworth, W. C.
- Champion Prize—£3 and Waldorf Tray, value £4 17s. 6d. Tray presented by Wiles Manufacturing Co., Ltd., Agricultural and Structural Engineers, Cnr. Millperra-rd. and Violet-st., Revesby, Sydney, for the best exhibit in Classes 31 to 45.**
- Grain**
- CLASS 46—Maize, Fitzroy, 1/2 bushel. First, £3; second, £2; third, £1.**
163. Emery, B. 166.1 Louttit, A.
164. Lavis, N. J. 167.3 Nelson, A. C.
165.2 Lavis, R. J.

You won't repaint
for at least five years
when it's

Supalusta

Super Enamelled Colours



Supalusta—
The Paint with the Super Lustre

- * Highly enamelled for a brilliant gloss.
- * Does not collect dirt.
- * Free flowing and easy brushing.
- * Does not crack or become brittle.
- * Supalusta is guaranteed to give you at least five times the lustre life of ordinary paint.



Ask to see the delightful range of colours
at all leading hardware stores

A product of British Paints Limited

Post this Coupon for fully descriptive and informative
Supalusta Technical Booklet, Supalusta Colour Chart and
free Colour Harmony Service advice to:

MACQUARIE COLOUR HARMONY SERVICE
Box 43 P.O., Bankstown, N.S.W.

Name.....
Address.....R.A.S.

CLASS 47—Maize, Leaming, $\frac{1}{2}$ bushel. First, £3; second, £2; third, £1.

168. Cameron, A. A. 169. Nelson, A. C.

CLASS 48—Maize, Golden Superb, $\frac{1}{2}$ bushel. First, £3; second, £2; third, £1.

170. Lavis, R. J. 172. Stitt, L. M.
171. Nelson, A. C. 173. Stitt, R. A.

CLASS 49—Maize, Funks' Yellow Dent, $\frac{1}{2}$ bushel. First, £3; second, £2; third, £1.

174. Emery, B. 175. Smart, L.

CLASS 50—Maize, Wellingrove, $\frac{1}{2}$ bushel. First, £3; second, £2; third, £1.

176. Smart, L.

CLASS 51—Maize, Golden Beauty, $\frac{1}{2}$ bushel. First, £2; second, £1; third, 10/-.

177. Nelson, A. C.

CLASS 52—Maize, Golden Nugget, $\frac{1}{2}$ bushel. First, £2; second, £1; third, 10/-.

178. Smart, L.

CLASS 53—Maize, Large Red Hogan, $\frac{1}{2}$ bushel. First, £2; second, £1; third, 10/-.

179. Nelson, A. C.

CLASS 54—Maize, Manning Pride, $\frac{1}{2}$ bushel. First, £2; second, £1; third, 10/-.

180. Smart, L. 182. Stitt, R. A.
181. Stitt, L. M.

CLASS 55—Maize, any other yellow variety, $\frac{1}{2}$ bushel (state variety). First, £2; second, £1; third, 10/-.

183. Louttit, A. (Early Morn). 185. Saul, W. T. (G.H. 128).
184. Ritter, C. G. (G.H. 128). 186. Smart, L. (Dawson's Yellow).

CLASS 56—Maize, Hickory King, $\frac{1}{2}$ bushel. First, £3; second, £2; third, £1.

187. Emery, B. 190. Lavis, R. J.
188. Lavis, G. A. 191. Louttit, A.
189. Lavis, N. J. 192. Nelson, A. C.

CLASS 57—Maize, Giant White, $\frac{1}{2}$ bushel. First, £3; second, £2; third, £1.

193. Emery, B. 196. Stitt, L. M.
194. Kemp, P. E. 197. Stitt, R. A.
195. Smart, L.

CLASS 58—Maize, any other white variety, $\frac{1}{2}$ bushel (state variety). First, £2; second, £1; third, 10/-.

198. Smart, L. (Manning Silvermine).

Champion Prize—£3 and Waldorf Tray, value £4 17s. 6d. Tray presented by Wiles Manufacturing Co., Ltd., Agricultural and Structural Engineers Cnr. Milperra-rd. and Violet-st., Revesby, Sydney, for the best exhibit in Classes 46 to 58.

HYBRID MAIZE

Ears.

Late Maturing Strains.

CLASS 59—Ensign, 10 ears. First, £3; second, £2; third, £1.

199. McClelland, J. J.

CLASS 60—Standfast, 10 ears. First, £3; second, £2; third, £1.

200. Ritter, C. G. 201. Saul, W. T.

CLASS 61—Victory, 10 ears. First, £3; second, £2; third, £1.

202. Ritter, C. G. 204. Stitt, L. M.
203. Saul, W. T. 205. Stitt, R. A.

CLASS 62—Jubilee, 10 ears. First, £3; second, £2; third, £1.

206. McClelland, J. J.

CLASS 63—G.H. 128. First, £3; second, £2; third, £1.

207. Ritter, C. G. 208. Saul, W. T.

Early Maturing Strains.

CLASS 64—Dawn, 10 ears. First, £3; second, £2; third, £1.

208A. Buttaworth, W. C. 210. Veitch, G. E.
209. Cole Bros.

CLASS 66—Emblem, 10 ears. First, £3; second, £2; third, £1.

211. Withdrawn. 214. Lavis, N. J.
212. Emery, B. 215. Lavis, R. J.
213. Lavis, G. A. 216. Veitch, G. E.

CLASS 67—Sterling, 10 ears. First, £3; second, £2; third, £1.

217. Tomkins, H. H., C. M., and W. B.

CLASS 68—Any other variety, name to be stated with entry, 10 ears. First, £3; second, £2; third, £1.

218. Veitch, G. E. (DS99).

Champion Prize—£3, for the best exhibit in Classes 59 to 68.

Grain.

Exhibits in Classes 69 to 78 may be from seed areas or commercial crops and only of recognised hybrid strains.

Late Maturing Strains.

CLASS 69—Ensign, $\frac{1}{2}$ bushel. First, £3; second, £2; third, £1.

219. McClelland, J. J.

CLASS 70—Standfast, $\frac{1}{2}$ bushel. First, £3; second, £2; third, £1.

220. Saul, W. T. 221. Veitch, G. E.

CLASS 71—Victory, $\frac{1}{2}$ bushel. First, £3; second, £2; third, £1.

222. Ritter, C. G. 223. Saul, W. T.

CLASS 72—Jubilee, $\frac{1}{2}$ bushel. First, £3; second, £2; third, £1.

224. McClelland, J. J.

Early Maturing Strains.

CLASS 73—Dawn, $\frac{1}{2}$ bushel. First, £3; second, £2; third, £1.

225. Veitch, G. E.

CLASS 75—Emblem, $\frac{1}{2}$ bushel. First, £3; second, £2; third, £1.

226. Emery, B. 228. Lavis, R. J.
227. Lavis, N. J. 229. Veitch, G. E.

CLASS 76—Sterling, $\frac{1}{2}$ bushel. First, £3; second, £2; third, £1.

230. Tomkins, H. H., C. M., and W. B.

CLASS 78—Any other variety, name to be stated with entry, $\frac{1}{2}$ bushel. First, £3; second, £2; third, £1.

231. Saul, W. T. 232. Veitch, G. E. (DS99).

Champion Prize—£3, for the best exhibit in Classes 69 to 78.

Commercial Maize.

Varieties not commercially grown and marketed in N.S.W. not eligible.

Entries in the undermentioned classes are confined to growers who planted and cultivated an area of not less than five acres of maize during the current season.

CLASS 79—Maize, Hickory King, one bushel, suitable for the manufacture of Corn Flakes. First, £4 10s.; second, £2 10s.; third, £1.

233. Louttit, A.

CLASS 80—Maize, any variety, white (other than Hickory King), one bushel, suitable for the manufacture of Corn Flakes. First, £4 10s.; second, £2 10s.; third, £1.

234. Kemp, P. E. 236. Stitt, L. M.
235. Smart, L. 237. Stitt, R. A.

CLASS 81—Maize, white (any variety other than Hickory King), one bushel, suitable for glucose, cornflour or other manufacture. First, £3; second, £1 10s.; third, 10s.

238. Kemp, P. E. 240. Stitt, L. M.
239. Smart, L. 241. Stitt, R. A.

CLASS 82—Maize, yellow or red, one bushel, suitable for glucose, cornflour, or other manufacture. First, £3; second, £1 10s.; third, 10s.

242. Louttit, A. 243. Smart, L.

HOMESTEADS—



**any Plan, any Layout,
Single or Two-storey
to your design**

Plan with BOWAS

for —

- ★ Homesteads
- ★ Country Cottages
- ★ Managers' Residences
- ★ Overseers' Quarters
- ★ Shearers and Station Accommodation Buildings

Bowas homesteads and country cottages are of good appearance and are solid, permanent structures unaffected by white ants or dry rot.

Bowas buildings are easily erected with the simplicity of timber frame construction—yet have the strength and durability of steel, due to the patented Bowas steel-wood-steel structural member of heavy gauge steel and dressed cypress.

These members are precision cut for ease of assembly by bolting—but all walls, both inside and out, flooring and roofing are nailed on as in timber frame construction.

Plan for a Bowas better-looking, sounder, easier-to-build homestead or cottage—our architects will design any plan, single or two-storey, to meet your wishes.

BOWAS CONSTRUCTIONS LTD.

Manufacturers of the famous Sidney Williams Steel-Fraim Buildings

Williams Parade (Off Constitution Rd.), Dulwich Hill, N.S.W. LM5204, LM7886
In Qld.: 108 Colchester St., South Brisbane. J 4833

COLES STORES SERVING AUSTRALIA

Sec. 10—AGRICULTURE—Hybrid Maize (Continued), Field Maize Competition, and Apiculture

CLASS 83—Maize, small yellow or red, one bushel. First, £3; second, £1 10s.; third, 10s.

244. Louttit, A. 245. Smart, L.

CLASS 84—Maize, medium sized yellow or red, one bushel. First, £3; second, £1 10s.; third, 10s.

246. Withdrawn. 249. Stitt, R. A.
247. Lavis, R. J. 250. Veitch, G. E.
248. Stitt, L. M.

CLASS 85—Maize, large sized yellow or red, one bushel. First, £2 10s.; second, £1 5s.; third, 10s.

251. Lavis, R. J. 252. Louttit, A.

FIELD MAIZE COMPETITION

Maize—Ears.

Entries in Classes 86 to 90 shall be restricted to growers who have competed in a 1955 local Field Maize Competition conducted in conjunction with this Society's 1955 Championship Field Maize Competition. An exhibitor shall be allowed one entry only in the class representing his local competition and Divisional Championship.

CLASS 87—Any variety, 10 ears—Lower North and Central Coast Division. First, £3; second, £2; third, £1.

253. Ritter, C. G. 254. Saul, W. T.

CLASS 88—Any variety, 10 ears—South Coast Division. First, £3; second, £2; third, £1.

255. Lavis, N. J. 256. Lavis, R. J.

CLASS 90—Any variety, 10 ears—Tumut-Gundagal and Inland Division. First, £3; second, £2; third, £1.

257. Tomkins, H. H., 258. Veitch, G. E.
C. M., and W. B. 259. Veitch, G. E.

Champion Prize—£10, for the best exhibit in Classes 86 to 90.

APICULTURE (BEES, HONEY, WAX, ETC.)

Judge: N. A. Cutts, Department of Agriculture, N.S.W., Sydney.
Stewards: R. B. Gulliford, D. J. Robinson, Staging Steward: L. C. W. Smart, Working Demonstration Exhibit: A. A. Clemson

Exhibitors should make provision for Bees to have access to water while on exhibition.

Regulations.

Exhibitors will be allowed three entries in each class.

All exhibits of the Products of the Apiary to be the bona fide production of the exhibitor's own apiary or

apiaries. A statutory declaration to this effect to accompany entry.

All honey exhibits must be protected against bees. No space allotted for collections to exceed 4ft. x 4ft.

Exhibitors will be allowed to remove Queens and Bees from Saturday until Monday.

Queens to be exhibited in non-reversible single frame observatory stands.

If any bees exhibited in Classes 91 to 94 be so affected by sickness, disease or other ailment as to warrant destruction or removal from the Showground as the case may be, the Society shall be entitled to have the bees destroyed and/or shall be entitled to require the owner to forthwith remove the bees from the Showground. All costs incurred by the Society in connection with such bees shall be for the account of the owner and shall be refunded by him to the Society.

(Special Prize)—£2 2s., presented by The Commercial Apiculturists' Association of N.S.W., O'Brien House, 58 Young-st., Sydney, will be awarded to the exhibitor gaining the highest number of points for any one exhibit.

W. D. Seabrook - 96 points

SCALE OF POINTS FOR JUDGING.

| QUEEN BEES— | Points |
|---|------------|
| Colour of Queen... | 20 |
| Form of Queen ... | 20 |
| Size of Queen ... | 20 |
| Evenness of Size and Colour of Bees ... | 40 |
| Total ... | 100 |

EXTRACTED HONEY (Liquid)—

| | |
|------------------|------------|
| Flavour ... | 25 |
| Density ... | 25 |
| Colour ... | 25 |
| Aroma ... | 10 |
| Clearness... | 10 |
| Brightness ... | 5 |
| Total ... | 100 |

EXTRACTED HONEY (Granulated)—

| | |
|-----------------------|------------|
| Evenness of Grain ... | 30 |
| Flavour ... | 30 |
| Firmness ... | 30 |
| Colour ... | 10 |
| Total ... | 100 |

COMB HONEY (in Sections)—

| | |
|------------------------|------------|
| Fullness ... | 30 |
| Colour of Cappings ... | 30 |
| Evenness ... | 20 |
| General Appearance ... | 20 |
| Total ... | 100 |

don't fail
to see



at the show

36 MACHINERY AVENUE, R.A.S. SHOWGROUND



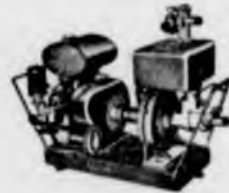
"E.B." HANDPIECES



SHEEPSHOWERS



ENGINE



FIREFIGHTERS



SELF-CONTAINED SHEARING PLANTS



JETTERS



LIGHTING PLANTS



MASTER MODEL OVERHEAD GEAR

Invitation
Sunbeam Corporation Ltd. extend a very cordial welcome to all country, interstate and New Zealand visitors. You are specially invited to see our factory at Mascot, N.S.W. A phone call to the Cooper Sales Department (MU 047) will take care of your transport to and from your city address — be our guest for lunch, we'll be glad to see you.

Coward Street, Mascot, N.S.W., is the address.

REMEMBER! When you buy Cooper you buy a product which is 100% Australian made, ensuring a continuity of spare parts and a guaranteed after-sales service.

Sunbeam CORPORATION LIMITED
(Formerly Cooper Engineering Company Pty. Limited)

SYDNEY • MELBOURNE • ADELAIDE • BRISBANE

Sec. 10—AGRICULTURE—Apiculture (Continued)

BEESWAX—White or Yellow—

| | |
|---------------------------|-----|
| Colour | 25 |
| Clearness... .. | 25 |
| Tenacity | 20 |
| General Appearance | 20 |
| Aroma | 10 |
| Total | 100 |

Honey.

Extracted (Liquid).

CLASS 98—Half-Dozen standard square glass jars, produced from Eucalypt or other native flora (source if known to be stated on certificate of entry), not less than 10oz., standard colour, light. First, £2; second, £1; third, 10s.

| | |
|-------------------------|----------------------|
| 297. Cullen, J. | 304. Seabrook, W. D. |
| 298. Cullen, J. | 305. Seabrook, W. D. |
| 299. McGrath, T. H. | 306. Smart, L. C. W. |
| 300. Peacock, R. | 307. Smart, L. C. W. |
| 301. Scattergood, A. H. | 308. Townsend, S. |
| 302. Scattergood, A. H. | 309. Wilgian Queen |
| 303. Scattergood, A. H. | Apiaries. |

CLASS 99—Half-Dozen standard square glass jars, produced from sources other than Eucalypt (source if known to be stated on certificate of entry), not less than 10oz., standard colour, light. First, £2; second, £1; third, 10s.

| | |
|-------------------------|----------------------|
| 310. Cullen, J. | 314. Seabrook, W. D. |
| 311. Peacock, R. | 315. Seabrook, W. D. |
| 312. Scattergood, A. H. | 316. Townsend, S. |
| 313. Scattergood, A. H. | 317. White, J. |

CLASS 100—Half-Dozen standard square glass jars, produced from Eucalypt or other native flora (source if known to be stated on certificate of entry). Not less than 10oz., standard colour, golden. First, £2; second, £1; third, 10s.

| | |
|-------------------------|----------------------|
| 318. Cullen, J. | 323. Seabrook, W. D. |
| 319. McGrath, T. H. | 324. Seabrook, W. D. |
| 320. Peacock, R. | 325. Smart, L. C. W. |
| 321. Scattergood, A. H. | 326. Wilgian Queen |
| 322. Scattergood, A. H. | Apiaries. |

CLASS 101—Half-Dozen standard square glass jars, produced from sources other than Eucalypt (source if known to be stated on certificate of entry), not less than 10oz., standard colour, golden. First, £2; second, £1; third, 10s.

| | |
|----------------------|--------------------|
| 327. Peacock, R. | 330. Townsend, S. |
| 328. Seabrook, W. D. | 331. Wilgian Queen |
| 329. Seabrook, W. D. | Apiaries. |

CLASS 102—Half-Dozen standard square glass jars, not less than 10oz., standard colour, dark. First, £2; second, £1; third, 10s.

| | |
|-------------------------|----------------------|
| 332. Cullen, J. | 337. Seabrook, W. D. |
| 333. Scattergood, A. H. | 338. White, J. |
| 334. Scattergood, A. H. | 339. Wilgian Queen |
| 335. Scattergood, A. H. | Apiaries. |
| 336. Seabrook, W. D. | |

Extracted (Granulated).

CLASS 103—Half-Dozen standard square glass jars, not less than 10oz., fine grain. First, £2; second, £1; third, 10s.

| | |
|----------------------|--------------------|
| 340. Cullen, J. | 344. Townsend, S. |
| 341. Cullen, J. | 345. White, J. |
| 342. Seabrook, W. D. | 346. Wilgian Queen |
| 343. Seabrook, W. D. | Apiaries. |

Champion Prize—£2 and Society's Certificate, for the best six jars of honey, liquid or granulated, in Open classes. The prize shall be determined in accordance with the number of points awarded.

BEES.

CLASS 91—Queen Bee (Italian) and her progeny, leather coloured. First, £2; second, £1; third, 10s.

| | |
|---------------------|----------------------|
| 260. Cullen, J. | 264. Seabrook, W. D. |
| 261. Diekman, F. G. | 265. Smart, L. C. W. |
| 262. Diekman, F. G. | 266. Townsend, S. |
| 263. May, J. R. | |

CLASS 92—Queen Bee (Italian) and her progeny, golden. First, £2; second, £1; third, 10s.

| | |
|----------------------|--------------------|
| 267. Cullen, J. | 270. Wilgian Queen |
| 268. Smart, L. C. W. | Apiaries. |
| 269. Smart, L. C. W. | |

CLASS 93—Queen Bee (Italian) and her progeny, bright, three banded. First, £2; second, £1; third, 10s.

| | |
|----------------------|---------------------|
| 271. Cullen, J. | 277. Suffolk, J. A. |
| 272. May, J. R. | 278. Suffolk, J. A. |
| 273. Milliner, K. E. | 279. Suffolk, J. A. |
| 274. Milliner, K. E. | 280. Townsend, S. |
| 275. Milliner, K. E. | 281. Wilgian Queen |
| 276. Seabrook, W. D. | Apiaries. |

CLASS 94—Queen Bee, any other variety (state variety) and her progeny. First, £2; second, £1; third, 10s.

| |
|--------------------|
| 282. Wilgian Queen |
| Apiaries. |
| (Caucasian). |

Champion Prize—£2, Championship Sash, and Society's Certificate, for the exhibit securing the highest number of points in Classes 91 to 94.

PRODUCTS OF APIARY.

Beeswax.

CLASS 95—Natural Yellow, not less than 5lb., nor more than 7lb. in one block. First, £2; second, £1; third, 10s.

| | |
|----------------------|----------------------|
| 283. Cullen, J. | 287. Smart, L. C. W. |
| 284. McGrath, T. H. | 288. Smart, L. C. W. |
| 285. Seabrook, W. D. | 289. Townsend, S. |
| 286. Seabrook, W. D. | |

CLASS 96—Natural White, not less than 5lb. nor more than 7lb. in one block. First, £2; second, £1; third, 10s.

| | |
|----------------------|----------------------|
| 290. Cullen, J. | 293. Seabrook, W. D. |
| 291. McGrath, T. H. | 294. Smart, L. C. W. |
| 292. Seabrook, W. D. | |

CLASS 97—Case of beeswax, not less than 50lb. prepared and packed for market. First, £3; second, £1 10s.; third, 15s.

| | |
|-----------------|----------------------|
| 295. Cullen, J. | 296. Seabrook, W. D. |
|-----------------|----------------------|



**Look for
DANKS**

**Man-on-the-Land
mark at the Show!**

The man on the land can easily find Danks stand again this year—just look for the “Billabong” Windmills.

Don't miss Danks display—there is something of interest for the whole family.

Make Danks stand your rendezvous.

**Don't forget, look for Danks stand,
Machinery Avenue, Showground.**

JOHN DANKS & SONS PTY. LTD.
Doody Street, Alexandria. Phone MU 0400

COLES STORES SERVING AUSTRALIA

Sec. 10—AGRICULTURE—Apiculture (Continued)

Comb Honey.

CLASS 104—Half-Dozen 11b. (reputed) sections (light honey), uniform size. First, £2; second, £1; third, 10s.

347. Cullen, J. 349. Seabrook, W. D.
348. Seabrook, W. D. 350. Smart, L. C. W.

CLASS 105—Half-Dozen 11b. (reputed) sections (dark honey), uniform size. First, £2; second, £1; third, 10s.

351. Scattergood, A. H. 353. Seabrook, W. D.
352. Scattergood, A. H. 354. Seabrook, W. D.

CLASS 106—Frame of Comb Honey not less than 100 square inches. First, £2; second, £1; third, 10s.

355. Cullen, J. 359. Seabrook, W. D.
356. Scattergood, A. H. 360. Smart, L. C. W.
357. Scattergood, A. H. 361. Smart, L. C. W.
358. Seabrook, W. D. 362. Townsend, S.

CLASS 107—Frame of Comb Honey not less than 50 square inches. First, £2; second, £1; third, 10s.

363. Cullen, J. 365. Seabrook, W. D.
364. Seabrook, W. D. 366. Smart, L. C. W.

CLASS 108—(Special Prizes)—Open to bee keepers of not more than 20 colonies who have not won a prize at any Royal Show in Sydney, Melbourne, Brisbane, Adelaide, Perth, or Launceston. Half-dozen standard glass jars. First, £2; second, £1; third, 10s.

367. McGrath, S. J.

(Special Prize)—£2 2s., presented by Mr. W. Seabrook, 8 Borrodale-rd., Kingsford, Sydney, will be awarded to the exhibitor gaining the highest aggregate number of points in Classes 108 and 109.

Bulk Honey.

CLASS 110—Two 56lb. drums, net weight, bulk honey for export, in accordance with Customs regulations. One drum each liquid and candied. Drums without label. First, £3; second, £1 10s.; third, 15s.

368. Seabrook, W. D. 370. Wilgian Queen
369. Townsend, S. Apiaries.

COLLECTION.

To be awarded on the following scale of points:

| | Points. |
|------------------------------|---------|
| Display | 50 |
| Liquid Honey | 10 |
| Comb Honey | 10 |
| Candied Honey | 10 |
| Wax | 10 |
| Queen Bee and Progeny | 10 |
| Total | 100 |

CLASS 111—Collection of Products of the Apilary. Space for display of collection not to exceed 4ft. x 4ft. The prize money, £50, will be divided in proportion to the percentage of points gained by each exhibit. Of the prize money, £10 10s. has been presented by the Producers' Co-operative Distributing Society, Ltd., Valentine and Quay-sts., Sydney; £10 10s. by Australian Glass Manufacturers Co. Pty., Ltd., Dowling-st., Waterloo, Sydney, and £3 3s. by Pender Bros., Manufacturers of Bee-keepers' Supplies, Elgin-st., Maitland, N.S.W.

371. Cullen, J. 372. Seabrook, W. D.

MOST SUCCESSFUL EXHIBITOR.

Classes 91 to 97, 110 and 111.

(Special Prize)—£5 5s., presented by the Commercial Apilaryists' Association of N.S.W., O'Brien House, 58 Young-st., Sydney, for the most successful exhibitor in Classes 91 to 97, 110 and 111. The prize shall be determined as follows:—Champion Prize to count as 2 points; first as 3; second as 2; and third as 1. The exhibitor gaining the highest number of points shall be the winner. In the event of two or more exhibitors securing an equal number of points, the exhibitor gaining the greatest number of first prizes shall receive the award.

Exhibitors will not be allowed to sell honey from these collections during the progress of the Show.



INDEX TO EXHIBITORS

Section 10—AGRICULTURE

- BALCOMB, H. N. and U. J., Tekoona, Toogong, N.S.W.
 Barker, E. J. H., Walbundrie, N.S.W.
 Beck, J. A., Lochiel, Harefield, N.S.W.
 Bolger, E. A., and D. Ticehurst, Warranoy, Wal-lendbeen, N.S.W.
 Brown, J. T. and R. D., Yarren Clump, Narrabri, N.S.W.
 Brown, S. R. and A. E., Bramble, Mendooran, N.S.W.
 Bruce, J. E., Glenala, Wongarbon, N.S.W.
 Buckie Pastoral Co., and C. May, Buckie, Croppa Creek, N.S.W.
 Buttsworth, W. C., Wilberforce, N.S.W.
- CAMERON, A. A., P.O. Box 4, Harwood Island, N.S.W.
 Cameron, D. F., Abington, Tambar Springs, N.S.W.
 Central N.S.W. District Exhibit, c/o. S. R. Lattimore, P.O. Box 180, Taree, N.S.W.
 Christie Bros., Llandudno, Boggabri, N.S.W.
 Cole Bros., Lochneath, Lochiel, Pambula, N.S.W.
 Cronk, V. F. and F. A., Boree Creek, N.S.W.
 Cullen, J., P.O. Box 2, Emmaville, N.S.W.
- DIEKMAN, F. G., 49 Lofberg-rd., Pymble, N.S.W.
 Dohnt and Son, Bonnie Doon, Eumungerie, N.S.W.
- EMERY, B., Wogomia House, Nowra, N.S.W.
- HAYNE, V., Guest-st., Narrabri, N.S.W.
 Heinrich, A. A., R.M.B. 543, Narraburra, Temora, N.S.W.
 Henley, T. E., Jandera, Cowra, N.S.W.
- JOHNSON, C. R., Buckinbah, Yeoval, N.S.W.
 Johnson, R. R., and Son, Umaria, Grenfell, N.S.W.
 Jones, C. S. and G. B., Bevala, Mendooran, N.S.W.
- KEMP, P. E., Wittitrin, Kempsey, N.S.W.
- LAVIS, G. A., Bodalla, N.S.W.
 Lavis, N. J., Rewlee, Bodalla, N.S.W.
 Lavis, R. J., Rewlee, Bodalla, N.S.W.
 Louttit, A., Campbell-st., Moruya, N.S.W.
- McCLELLAND, J. J., Shoalhaven-st., Kiama, N.S.W.
 McDonald, N., Ulva, Mulwala, N.S.W.
 McGowan, V. B., Linfield, Winton, Duri, N.S.W.
 McGrath, S. J., P.O. Box 24, Nowra, N.S.W.
 McGrath, T. H., P.O. Box 24, Nowra, N.S.W.
 May, J. R., Limekilns, Bathurst, N.S.W.
 Milliner, K. E., 44 Grove-av., Peshurst, N.S.W.
 Moreton and Downs District Exhibit, Q'ld, c/o. B. Haag, Teviotville, Fassifern Line, Q'ld.
- NELSON, A. C., Private Mail Bag, Kempsey, N.S.W.
 Northern N.S.W. District Exhibit, P.O. Box 109, Lismore, N.S.W.
- PEACOCK, R., 21 Carbine-st., Kerang, Vic.
 Penfold, R., Talgot-st., Quandialla N.S.W.
 Pfitzner, G. C., and Son, Goolgowi, N.S.W.
 Pickering, R. J., Wha-Ree, Quirindi, N.S.W.
- RITTER, C. G., Bowman Farm, Gloucester, N.S.W.
 Roberts, E. E., and S. Amey, Oakwood, Dubbo, N.S.W.
 Rodway Bros., Koreela Park, Temora, N.S.W.
 Rowlings, R. Dangarsleigh, Armidale, N.S.W.
- SAUL, W. T., P.O. Box 260, Bellimbopinni, Macleay River, N.S.W.
 Scattergood, A. H., 3 Gerald-st., Queanbeyan, N.S.W.
 Seabrook, W. D., Fernbrook Apiaries, Limekilns, Bathurst, N.S.W.
 Sharp, L. J., Kelvin Grove, Eumungerie, N.S.W.
 Simpson, F. J., R.M.B. 123, Alectown Mail, Coobang, Parkes, N.S.W.
 Smart, L., Cawdor, Camden, N.S.W.
 Smart, L. C. W., Silverwood, Werombi-rd., Camden, N.S.W.
 Southern N.S.W. District Exhibit, P.O. Box 14, Tumbarumba, N.S.W.
 Stitt, L. M., 22 York-st., Taree, N.S.W.
 Stitt, R. A., Wingham-rd., Taree, N.S.W.
 Suffolk, J. A., Lebanon, Tomerong, Nowra, N.S.W.
- TOMKINS, H. H., C. M., and W.B., P.O. Box 94, Mudgee, N.S.W.
 Tonkin, E. A., Kirewa, North Star, N.S.W.
 Tonkin, W. E., Myee, Pallamallawa, N.S.W.
 Townsend, S., 24 Jarrett-st., Campsie, N.S.W.
 Troy, V. W. R., R.M.B. 121, Quandialla, N.S.W.
- VEITCH, G. E., Mount-st., South Gundagai, N.S.W.
- WALL, J. W., Stoney Creek, Narrabri, N.S.W.
 Ward, B. T., Flemington, Tullamore, N.S.W.
 Watt, N., Strathisla, Trundle, N.S.W.
 Western N.S.W. District Exhibit, c/o. K. P. Trevitt, Avonlea, Yetholme, N.S.W.
 White, J., Day-st., Wyoming, Gosford, N.S.W.
 Wilby, C. F. and C. M., 22 Auburn-st., Moree, N.S.W.
 Wilgian Queen Apiaries, Stanborough, Inverell, N.S.W.
 Wilson, J. T., Mingelo Park, Trewilga, N.S.W.
 Worboys, B. C. and L. G., Stoneleigh, Gunnedah, N.S.W.

Section 11—DAIRY PRODUCE

BUTTER, DRIED MILK, CHEESE, HAMS, BACON, AND LARD.

- Committee:*
 J. R. Graham (Chairman)
 W. A. Chaffey, M.L.A.
 P. Charley
- R. J. F. Downes
 R. Watson Hewett
 Lt-Col. T. E. Irwin
- Steward-in-Chief:*
 J. R. Graham
- Assistant Steward-in-Chief:*
 E. A. Southee
- General Steward:*
 A. Walker
- F. A. McIntosh
 E. A. Southee

BUTTER.

- Judges:*
 (Local Consumption):
 J. T. Dickson,
 Department of Agriculture, N.S.W.,
 Sydney.
- (Export Butter):
 R. C. Hottes,
 Department of Commerce and Agriculture,
 Margaret-st., Sydney.
 J. McGahey,
 Department of Commerce and Agriculture,
 Margaret-st., Sydney.
- (Royal Export)
 S. Trainor,
 Department of Agriculture and Commerce,
 London.
- Stewards:*
 E. H. Headley
 J. W. Keovers
 A. B. Shelton
 F. Wilkinson
 J. Williamson
 C. R. Buttsworth
 H. Perrott

JUDGING DAY.

Unless otherwise stated the judging of Dairy Produce exhibits will commence at 9 a.m., Thursday, 22nd March.

PAVILION OPEN TO PUBLIC.

The Dairy Produce Pavilion will be open to the public daily from 9 a.m. to 10 p.m., except Good Friday, 30th March, on which day the Pavilion will close at 6 p.m.

TROPHIES ON DISPLAY.

Trophies offered for competition in the Dairy Produce Section shall be on display in the special windows provided for the purpose in the Society's General Showground Office.

SPECIAL DAIRY PRODUCE REGULATIONS.

Exhibitors are reminded that the Society's General Regulations apply to all sections of the Show and that the Special Regulations hereunder set out which apply to this section only are merely supplementary to the General Regulations.

BUTTER.

- Only one entry may be made by each factory or branch factory in each class.
 Butter in all classes to be made from pasteurised cream and no preservative other than salt to be added.
 All butter exhibited may be subject to analysis.
 Butter, other than that in cold storage, must be in position by 9 p.m., Wednesday, 21st March.

BOXES.

- All butter specially manufactured and prepared for exhibition purposes, must be packed in PLAIN STANDARD LOCAL BOXES (BRANDED BOXES NOT PERMITTED).
 All exhibits for Classes 2 to 8 to be addressed to the Director, Royal Agricultural Society of N.S.W., c/o. Waterside Cold Stores Pty., Ltd., 10 Point-st., Pyrmont, Sydney, and must be in cold store as stated in each class.
 Exhibitors failing to observe this Regulation are liable to disqualification.
 For purposes of identification a label, bearing the full name of the exhibitor (Factory) together with full particulars of the class for which the exhibit is intended, must be securely affixed to the lid of each box before it is wrapped in its protecting cover.
 The surface of the butter must be impressed with the Australian Roller Brand.
 An exhibitor who may desire to go through the exhibits with the judge, after judging day, shall make an appointment through the Steward-in-Chief or the Director.