

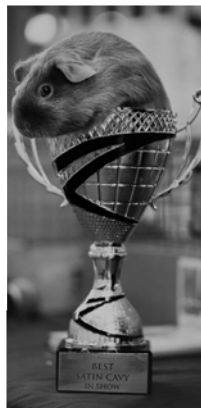


Royal Agricultural Society of NSW

Schedule

Sydney Royal National Honey Show

8 - 19 April 2022
Sydney Showground
Sydney Olympic Park
www.rasnsw.com.au



Sydney Royal
SINCE 1822



This page is intentionally blank.



Royal Agricultural Society of NSW

Welcome from the President



With a proud history of running competitions for the benefit of breeders, producers and craftspeople going back to 1823, the Royal Agricultural Society of NSW today welcomes entries from right across Australia to be judged at the Sydney Royal Easter Show.

Our competitions were established to improve the quality of produce and animal breeds and that has not changed over the past 200 years. Our vision is for a community that understands and values sustainable Australian agriculture and award-quality produce, and this vision is fulfilled with each entry in our competitions.

Initially, we assessed livestock before adding tobacco, coffee, wine, and precious stones and diamonds in our early years. As the young colony of New South Wales evolved, we added domestic pets, arts and crafts, foodstuffs and even ostriches were judged in 1882.

Your decision to enter this competition ensures your place in our history. You are taking your place along with more than 30,000 others with a willingness to be judged and assessed, and introduces your entry to Showgoers, consumers, exhibitors and our highly regarded judges.

Sydney Royal competitions evolve and progress each year, in part due to the innovation and enthusiasm of competitors, and also in response to consumer and industry trends. It is this spirit that saw us introduce, amongst others, classes for canaries (1873), woodchopping (1899), potato crops (1927), campdraft (1934), and even pedigree guinea pigs (1977). This willingness to change and grow guarantees Sydney Royal medals remain relevant, valued, and worth striving for.

Winning an award in a Sydney Royal competition confirms the exceptional standard of your entry and provides marketing opportunities on many levels. It is an incredible acknowledgement of your hard work and dedication as judged by our esteemed panels of judges. As I thank you for considering our competitions, I also thank our judges, stewards, sponsors, committees and supporters.

Whether your entry is awarded a ribbon or not, I hope that you enjoy and ultimately benefit from this Sydney Royal experience, and I wish you the very best of luck.

Michael Millner
President, Royal Agricultural Society of NSW

TABLE OF CONTENTS

KEY INFORMATION	4
NATIONAL HONEY SHOW INFORMATION	5
SPECIAL APICULTURE REGULATIONS	10
GENERAL INFORMATION	11
OPEN CLASSES	12
SMALL PRODUCERS CLASSES	15
SCHOOL CLASSES	16
COMMERCIAL CLASSES	16

KEY INFORMATION

ENTRY FEE:	<p>RAS Members who are not financial at the time of submitting their Entry Fees will not be eligible for the entry discount</p> <p>RAS Members Open, Small Producers and Schools (Classes 1 to 17 and 22 to 51) \$9 (incl. GST) per Exhibit submitted using the RAS' online entry facility. Open, Small Producers and Schools (Classes 19 to 21) \$12 (incl. GST) per Exhibit submitted using the RAS' online entry facility. Commercial Classes (Classes 60 to 62) \$28.50 (incl. GST) per Exhibit submitted using the RAS' online entry facility.</p> <p>Non RAS Members Open, Small Producers and Schools (Classes 1 to 17 and 22 to 51) \$12 (incl. GST) per Exhibit submitted using the RAS' online entry facility. Open, Small Producers and Schools (Classes 19 to 21) \$16 (incl. GST) per Exhibit submitted using the RAS' online entry facility. Commercial Classes (Classes 60 to 62) \$38 (incl. GST) per Exhibit submitted using the RAS' online entry facility.</p>
APPLICATIONS FOR ENTRY:	<p><u>Online Applications For Entry</u> To enter online, simply visit www.rasnsw.com.au/honey If you require any assistance, please contact the Honey Coordinator.</p>
CLOSING DATE OF ENTRY:	<p>Wednesday 9 February 2022 Late Applications after this date <u>will not</u> be accepted.</p>
DELIVERY OF EXHIBITS:	<p>Exhibitor packs (which include identification labels, a delivery and collection slip, delivery instructions etc.) will be sent to Exhibitors approximately two (2) weeks prior to the Show. Exhibits must be packaged in an enclosed box, no more than 15kg in weight and bear the name and address of the Exhibitor as per the labels provided.</p> <p>Personal Delivery: Deliveries will only be accepted between the following times: Friday 25 March 2022 - between 9.00am and 3.00pm Saturday 26 March 202 - between 9.00am and 3.00pm.</p> <p>Address: Sydney Royal Arts & Craft Pavilion RAS of NSW Sydney Showground Sydney Olympic Park NSW 2127</p> <p>ALL Exhibits will be checked against the delivery slip at the time of delivery in the presence of the Exhibitor or Exhibitors delivery agent.</p> <p>Postal or Courier Delivery: Please ensure all Exhibits are triple wrapped in protective packaging otherwise breakages may occur.</p> <p>Deliveries will only be accepted from Monday 21 March to Thursday 24 March 2022 between 9.00am and 5.00pm only.</p> <p>Postal Address: Honey Coordinator RAS of NSW Locked Bag 4317 Sydney Olympic Park NSW 2127</p> <p>Courier Address: Honey Coordinator RAS of NSW 1 Showground Road Sydney Olympic Park NSW 2127</p>
JUDGING DATES:	<p>Tuesday 5 April 2022 All Judging is closed to Exhibitors and the general public.</p>

KEY INFORMATION (cont.)

PUBLICATION OF RESULTS:	The results, including a PDF of Judge's score cards will be published online after 4.00pm Wednesday 6 April 2022 and can be found at www.rasnsw.com.au/honey Results will not be released prior to this date.
SOCIAL MEDIA:	Follow us to stay up to date throughout the year. Facebook: www.facebook.com/eastershow #myeastershow Twitter: @eastershow Instagram: @sydney_royal_easter_show
CONTACT:	Honey Coordinator Royal Agricultural Society of NSW Locked Bag 4317, Sydney Olympic Park NSW 2127 Telephone (02) 9704 1367 honey@rasnsw.com.au

NATIONAL HONEY SHOW INFORMATION

CLASS SELECTION

To assist Exhibitors with their Class selection, a Honey Colour Guide (Pfund Reading) can be found online at www.rasnsw.com.au/honey under Competition Information. The Stewards will not move Exhibits that are entered into incorrect Classes.

Colour	Pfund reading
Very Light	0-15
Light	16-34
Medium	35-59
Dark	60-120

ORIGIN OF EXHIBIT

All Exhibits must be of Australian Origin, 100% Australian honey and apiry products produced and packaged in Australia.

ENTRY REQUIREMENTS

Exhibitors are only permitted to enter three (3) entries per Class each which must be obtained from a different floral source.

Exhibits must have been produced between 1 March 2020 and 1 March 2022.

Exhibits entered into liquid honey Classes **MUST** be presented for judging in a **standard 500g/375ml glass round jar**, with a white 63mm plastic or white metal lid.

Exhibits entered into Classes 19 to 21 **MUST** be presented for judging in RAS supplied bottles. No alternate bottles will be accepted. Refer to Preparation of Exhibits (b) on page 8.

Exhibits that fail to meet the requirements of any Class will not be placed on display.

SMALL PRODUCER CLASSES

Exhibitors must have **20 or less colonies** to be eligible for entry into Classes 36 to 45. These Exhibits are grouped together for Judging to assess like with like.

Exhibits entered into Class 40 **MUST** be from flow frames only.

OPEN CLASSES

Any Exhibitor can enter these Classes and there is no minimum or maximum number of colonies required to enter.

MEAD CLASSES

Exhibits entered into Classes 32 to 34 **MUST** be in **screw top clear colourless 375ml wine bottles without lettering, fluting or ornamentation of any kind** and must be uniform in each entry. No spirit bottles will be accepted. Entries submitted in coloured bottles will be deemed Not To Schedule, and therefore not judged or placed on display. Mead is an alcoholic beverage created by fermenting honey with water, sometimes with various fruits, spices, grains or hops. Mead can be sparkling (carbonated) or still. The defining characteristic of Mead is that the majority of the beverages fermentable sugar is derived from honey. Mead contains no products of distillation.

Exhibits entered into Class 32 **MUST** specify carbonation level, strength and sweetness.

Exhibits entered into Class 33 **MUST** specify carbonation level, strength, sweetness and fruit varieties used.

Exhibits entered into Class 34 **MUST** specify carbonation level, strength, sweetness and spices used.

NATIVE HONEY CLASSES

Exhibits must be in the bottles provided by the Honey Competition. The bottles should be filled to the collar of the jar and honey strained prior to filling.

Judging criteria definitions:

Flavour - The initial taste, secondary taste, and any lingering mouthfeel.

Aroma - The scent imparted immediately and soon after opening the bottle. Smells of mould and fermentation are undesirable.

Clarity - A measure of contamination from, but not limited to, pollen, dirt, tree bark or propolis.

Density - Moisture content, measured by a refractometer.

Brightness - A measure of visible bubbles before opening the bottle.

BEESWAX CLASSES

Exhibits entered into Classes 1 to 2 must be between 2kg to 3.5kg block shape and are to be round, square or rectangle only. No fancy shapes are allowed.

CANDLE CLASSES

Exhibits entered into Classes 4 to 9 must be made from natural Australian beeswax.

COMB HONEY CLASSES

Entries must be all beeswax and no plastic comb foundation to be used. Exhibits are to be displayed in a sealed display case and decorative edging is NOT permitted. The timber edge of the frame **MUST** be visible for judging.

COMMERCIAL CLASSES

Exhibitors including honey packers and producer honey packers may enter Classes 60 to 62. The honey is to be from a single floral source or from a blend of floral sources. A total of twelve jars which are to consist of six commercially labelled jars for display purposes and six clean skinned **standard 500g/375ml glass round jar, with a white 63mm plastic or white metal lid** without commercial labelling for judging purposes. Exhibits that are required for the display must comply with the requirements of the Australian Food Standard Code for both product and packaging. Any Exhibits that do not comply will be automatically disqualified and not placed on display.

Exhibitors are required to detail the Commercial Titles of all Exhibits on the Application for Entry. Commercial Titles will be published in the Results Catalogue, online, and may be used for promotional material. Commercial Title includes, but is not limited to, the brand name and product description as it appears on the Exhibit's primary commercial label.

All Exhibits must be commercially available in Australia and must meet the below minimum requirements, at the time of entry:

Class	Minimum Quantity
Liquid Honey	1,000kg in stock and available for sale at the time of entry.
Creamed Honey	300kg in stock and available for sale at the time of entry.

All Commercial Exhibits once submitted become the property of the RAS.

COMMERCIAL CLASSES MEDAL LEVELS

Judging is conducted using the 100 point scoring system. Awards shall be determined by the Judges on the following point scale:

- Gold medal for outstanding Exhibits gaining 95.0pts and over.
- Silver medal for excellent Exhibits gaining 90.0pts but fewer than 95.0pts.
- Bronze medal for quality Exhibits gaining 85.0pts but fewer than 90.0pts.

The Judges may make Awards only on the basis of gold, silver and bronze medals and may, at their absolute discretion, decline to make an Award in any Class. In the case of multiple entries per Class, an Exhibitor may be awarded more than one Award in the same Class.

SCALE OF POINTS FOR JUDGING

Beeswax	Points
Colour	35
Clearness	25
General Appearance	30
Aroma	10
Total Points	100

Candles	Points
Appearance	25
Burn Response & Wick	35
Feel	10
Ease of Lighting	10
Cleanliness	20
Total Points	100

Decorative Candles	Points
Appearance	50
Burn Response & Wick	20
Feel	10
Ease of Lighting	10
Cleanliness	10
Total Points	100

Wax Moulds	Points
Skill in Moulding and Shaping	50
Appearance	25
Quality of Wax	25
Total Points	100

Pollen	Points
Taste	25
Cleanliness	25
Hardness	20
General Appearance	30
Total Points	100

Liquid Honey (excluding Native)	Points
Flavour	25
Density	25
Colour	25
Aroma	10
Clearness	10
Brightness	5
Total Points	100

Liquid Honey (Native)	Points
Flavour	30
Aroma	25
Clarity	25
Density	15
Brightness	5
Total Points	100

Creamed & Natural Granulation Honey	Points
Evenness of Grain	30
Flavour	30
Firmness	30
Colour	10
Total Points	100

Comb Honey	Points
Fullness	30
Colour of Cappings	30
Evenness	20
General Appearance	20
Total Points	100

Chunk Honey	Points
Colour	30
Comb Appearance	30
Flavour	30
Clearness	10
Total Points	100

Mead	Points
Flavour	50
Aroma	20
Appearance	20
Mouthfeel	10
Total Points	100

PREPARATION OF EXHIBITS

The RAS will provide Exhibitors with an Exhibitor Confirmation Pack which will include the following:

- Identification labels that contain the Barcode Number, Barcode, Class Number and Catalogue number. For liquid honey, labels should be placed on the lids. Classes 32 to 34 should have labels placed around bottom curve of bottles.
- Classes 19 to 21 only - Exhibitor will receive two 100ml clear glass round screw top bottles, white plastic lid, per entry.
- Exhibitor delivery and collection slip. It is the Exhibitor's responsibility to check the information on the Exhibitor confirmation slip is correct, and accurately reflects the Classes into which the Exhibits have been entered.
- Courier and postal labels.
- Map and delivery instructions.

Should you require additional identification labels or need to make amendments to your Exhibitor Confirmation Slip, please contact the Honey Coordinator.

DISPLAY OF EXHIBITS

The Sydney Royal Arts & Crafts Pavilion will be open to the public from 9.00am to 8.30pm daily throughout the Sydney Royal Easter Show, and all honey Exhibits will be on display throughout this time. Any Exhibit deemed Not To Schedule will not be displayed.

EXHIBITION PASSES

Exhibitors who enter six (6) or more entries will be issued with one (1) day standard entry pass into the 2022 Sydney Royal Easter Show.

HONEY DONATION

Any honey Exhibits donated to the RAS may be used for internal promotional or marketing events, or donated to organisations in need. Donation of Exhibits is nominated at the time of entry and requests for collection will NOT be considered after Monday 18 April 2022.

COLLECTION OF EXHIBITS

Open, Small Producers and School Exhibits only, will be available for collection on **Friday 22 April 2022** and **Saturday 23 April 2022** between 9.00am and 3.00pm.

The RAS cannot guarantee Exhibits will be packed in the same box or configuration as they have been delivered in. The RAS strongly recommends Exhibitors bring with them additional packing materials to avoid breakages.

Exhibits not collected by 3.00pm on Saturday 23 April 2022 will become the property of the RAS. The RAS will not follow up Exhibitors who fail to collect their entries during the collection times.

Collection Address: Sydney Royal Arts & Craft Pavilion, RAS of NSW, Sydney Showground, Sydney Olympic Park NSW 2127.

Exhibitors will need to present their Exhibitor collection slip and will receive any ribbons and medals at the time of collection.

SUPPORTER PRIZES

Prizes are provided by third parties and the RAS advises that any such prizes may be subject to change or amendment occurring at any time, thereby making the original information published incorrect.

PRIZES AND GST

The Australian Taxation Office has deemed that GST is payable on prizes if an Exhibitor is registered for GST and enters an Exhibit as part of a business enterprise.

The information an Exhibitor provides on the Application for Entry determines whether GST is applicable.

Any prize stated in this Schedule does not include GST.

GST will not apply:

- if an Exhibitor enters an Exhibit as a hobby or private recreational pursuit; or
- if an Exhibitor enters an Exhibit as part of a business enterprise, the Exhibitor has an ABN, but the Exhibitor is NOT REGISTERED for GST.
- if an Exhibitor enters an Exhibit as part of a business enterprise the Exhibitor is not entitled to an ABN as the business or enterprise is not operating in Australia.

GST will apply:

- if an Exhibitor enters an Exhibit as part of a business enterprise, the Exhibitor has an ABN, and the Exhibitor is REGISTERED for GST.

Where GST applies, the RAS will pay the prize money quoted in this Schedule plus 10% GST. The RAS will issue a recipient created tax invoice.

WARNING: *The Exhibitor must complete the Tax Details on the Application for Entry. Failure to do so will result in the RAS deducting 47% of the successful Exhibitor's prize money as Pay As You Go Tax (PAYG). The RAS recommends that the Exhibitor seeks professional advice before completing the Tax Details.*

RIBBONS, PRIZES AND AWARDS

1st, 2nd and 3rd prize ribbons will be issued in Apiculture Classes 1 to 51. Prize money will be 1st \$60, 2nd \$30 and 3rd \$10, unless specified otherwise. Highly Commended Awards will be awarded at the discretion of the Judge. Only Championship winners will receive a certificate.

MOST SUCCESSFUL EXHIBITOR PRIZE

The award shall be determined as follows: for the three highest awards in each Class, points shall be allocated on the basis of 3, 2 and 1. Should there be fewer than three awards in any one Class, the points shall be on the said basis in order of merit. The Exhibitor gaining the highest number of points shall be the winner. In the event of two or more Exhibitors securing an equal number of points, the Exhibitor gaining the greatest number of first prizes shall be the winner.

CHAMPIONSHIPS, TROPHIES AND ANNUAL PRIZES

1st place winning Exhibits will be eligible to be judged for the relevant Championship award, as stated in the Schedule. Exhibits will be judged by a Panel of Judges and ranked according to the Borda Count Method (for further details please refer to www.rasnsw.com.au/honey). The decision made by the Judges Panel is final and no correspondence will be entered into.

SPECIAL APICULTURE REGULATIONS

The RAS' General Regulations apply to all Sections of the Show. These Special Apiculture Regulations apply to this Section only. Unless expressly stated in the General Regulations, if there is any inconsistency between the General Regulations and these Special Apiculture Regulations, the Special Apiculture Regulations prevail. Copies of all Regulations are available from the Administration office at the Showground and online at www.rasns.com.au.

1. DEFINITION OF EXHIBITOR - COMMERCIAL CLASSES

An Exhibitor means a person, firm, partnership, company or body corporate, which in the opinion of the RAS manufactures, has product, manufactured or packaged under contract and/or processes honey or apiary products.

2. WITHDRAWALS

A refund of Entry Fees shall not be made unless a notification of withdrawal is received by the Honey Coordinator in writing by the closing day of entry. A refund will not be provided until all unused passes have been returned to the Honey Coordinator.

3. PROTESTS AND DISQUALIFICATIONS

- a) Each Exhibitor shall accept the Judges' decision on the merits of the respective Exhibits. A protest may be provided to the RAS in writing within seven (7) calendar days of the announcement of the Awards by the Exhibitor with an Exhibit in the Class to which a protest relates.
- b) An Exhibitor who in the opinion of the RAS breaches any of these Regulations may be disqualified by the RAS from Exhibiting at any of its future Shows.
- c) An Application for Entry received from an Applicant who has been disqualified from Exhibition by the RAS shall not be accepted during the period of such disqualification. Should any such application be accepted, it shall, when discovered, be deemed void and the Entry Fee, Exhibit and any Award made to such Applicant shall be forfeited to the RAS. Where an Exhibit or an Exhibitor is disqualified and their prize is forfeited, the RAS may (but is not obliged to) promote the Exhibit next in order to that prize. A disqualified Exhibit will not be put on display.

4. AUDITING

- a) The RAS will appoint any person (an 'Auditor') to undertake random pre-judging and post-judging audits relating to any Exhibit entered into the Sydney Royal National Honey Show.
- b) An Exhibitor must co-operate with and do all things reasonably required by an Auditor in connection with any Audit and adhere to arrangements that have been made between the RAS and the Exhibitor.
- c) The Exhibitor must keep on file and maintain records as are required to demonstrate the truth and accuracy of all information stated in the Exhibitor's Application for Entry.
- d) Each Exhibitor hereby consents to an Auditor, in the conduct of an Audit, to enter, with notice, the Exhibitor's premises as nominated and inspect all honey, books, electronic and hard copy records thereon, or to request relevant documentation electronically for the purpose of verifying the authenticity of any information stated in the Exhibitor's Application for Entry.

- e) An Exhibitor undergoing an Audit must permit the Auditor to take from the Exhibitor's premises up to three (3) samples (free of charge) taken at random from the stock on hand of any Exhibit for comparison with the original Exhibit.
- f) If the Exhibitor fails to comply with these provisions; or as a result of the Honey Audit, any discrepancy is disclosed, or a sample taken is not identical with the original Exhibit, the RAS may:
 - (i) cancel any Award won by the Exhibitor;
 - (ii) disqualify the Exhibitor from further Exhibition for such period as the RAS considers appropriate;
 - (iii) publish to such persons as the RAS considers appropriate the fact of any such cancellation and/or disqualification in respect of the Exhibit and the Exhibitor.
- g) The RAS may publish in any medium the results of any such inspection or analysis. Neither the Exhibitor nor any other Person shall have any claim against the RAS or against any Councillor, member, employee, agent or representative in respect of any matter published.

5. POWER TO CANCEL OR ALTER

- a) The RAS may, without assigning a reason:
 - (i) Alter the Closing Date for the Competition;
 - (ii) Remove any Exhibit from Sydney Showground or cause any Exhibit to be removed from Sydney Showground;
 - (iii) Alter the conditions of the Competition, including but not exclusive to the judging conditions and process followed;
 - (iv) Rule that an Exhibit or Exhibitor may not compete or is ineligible to compete;
 - (v) Alter the date, time or place on or at which the judging or Awards Presentation is scheduled to take place;
 - (vi) Alter a Judge scheduled to Judge the Event.
- b) Whilst every effort will be made to release results on the date indicated, the RAS reserves the right to:
 - (i) Defer announcing results until the Chair of Judges' report is finalised.
 - (ii) Cancel the Event.
- c) The rights set out above apply notwithstanding:
 - (i) The RAS' acceptance of an entry;
 - (ii) Inclusion of an entry in the results Catalogue; or
 - (iii) The issue of any other document.

6. COMMERCIAL CLASSES MEDAL ARTWORK

Medal winning Commercial Exhibitors will receive a certificate denoting the Award won, Sydney Royal Award artwork, permission to use the trademark license, and an 'Award Regulations and Promotion Kit' for guidance on artwork usage and marketing of the Award won which can be obtained by contacting the Honey Coordinator at honey@rasns.com.au. The use of the Award artwork is subject to the Trademark Terms & Conditions in accordance with the RAS General Regulations Rule 189. An Exhibitor making improper use of medals or special Awards won in the National Honey Show for advertising purposes may be subject to disqualification from further Shows conducted by the RAS.

GENERAL INFORMATION

CONDITIONS OF ENTRY TO SYDNEY SHOWGROUND

Exhibitors must adhere to the Conditions of Entry to Sydney Showground located at www.rasnsw.com.au, the RAS General Regulations and the Special Sydney Royal Apiculture Show Regulations in this Schedule (the "Regulations"), as they are bound by these terms.

The Application for Entry and the Regulations constitute the whole agreement upon which Entries are submitted and the Exhibitor agrees that all representations and statements not appearing on the Application for Entry or in the Regulations are excluded.

The Exhibitor certifies that each article exhibited by them or by their child/children/guardian is duly registered and either their property absolutely or is under their absolute care and control.

All refunds of Entry Fees are at the discretion of the RAS.

A refund of Entry Fees shall not be made unless a notification of withdrawal is received by the RAS before the Closing Day of Entry. A refund will not be provided until all unused passes have been returned to the Honey Coordinator.

The RAS has the power to evict any Exhibitor from the Showground in the event of a breach of the Conditions of Entry to Sydney Showground, RAS General Regulations and/or the 2022 Sydney Royal National Honey Show Schedule.

WORKPLACE SURVEILLANCE ACT

RAS operates surveillance cameras from Sydney Showground Security and these are located in and around facilities requiring security monitoring for the safety or security of individuals or property. RAS also has access to Sydney Olympic Park security cameras and vice versa. Please note that security camera monitoring is continuous and ongoing and it is deemed that a person, by entering the Showground, consents to this photographing, filming or taping. RAS strictly complies with the Workplace Surveillance Act 2005.

CLASSES FOR ENTRY

All Exhibitors should ensure they have read the specific Class requirements stated in the Schedule when considering their entries.

OPEN CLASSES

BEESWAX

Class No.	Class Description	Quantity Required for Entry	Class Prize Money Supported by
1	Beeswax, natural yellow.	1 x block	<i>E C Tobin & Son Apiary Supplies</i>
<i>(S001B) - Cash Prize supported by E C Tobin & Son Apiary Supplies. Prize 1st \$50</i>			
2	Beeswax, white.	1 x block	<i>Royal Agricultural Society of NSW</i>
(S003)	CHAMPION BEESWAX - Ribbon and certificate for the best Exhibit in Classes 1 and 2.		

CANDLES

Class No.	Class Description	Quantity Required for Entry	Class Prize Money Supported by
4	Moulded candles, natural beeswax.	2 x candles	<i>Royal Agricultural Society of NSW</i>
5	Rolled candles, (less than 3cm diameter), natural beeswax.	2 x candles	<i>Royal Agricultural Society of NSW</i>
6	Rolled candles, (more than 3cm diameter), natural beeswax.	2 x candles	<i>Royal Agricultural Society of NSW</i>
7	Dipped candles (less than 3cm diameter), natural beeswax.	2 x candles	<i>Royal Agricultural Society of NSW</i>
8	Solid candles (more than 3cm diameter), natural beeswax.	2 x candles	<i>Royal Agricultural Society of NSW</i>
9	Painted or decorated candle, natural beeswax.	1 x candle	<i>Royal Agricultural Society of NSW</i>
(S010)	CHAMPION CANDLE - Ribbon and certificate for the best Exhibit in Classes 4 to 9.		
<i>(S010A) - RAS of NSW Award of Excellence Medallion for Champion Candle</i>			

WAX MOULDS

Class No.	Class Description	Quantity Required for Entry	Class Prize Money supported by
11	Beeswax moulds, natural beeswax.	6 x moulds	<i>Royal Agricultural Society of NSW</i>

POLLEN

Class No.	Class Description	Quantity Required for Entry	Class Prize Money Supported by
12	Pollen, cleaned and dried.	2 x 500g glass jars	<i>Royal Agricultural Society of NSW</i>

LIQUID HONEY

Class No.	Class Description	Quantity Required for Entry	Class Prize Money Supported by
13	Liquid honey, produced from Eucalypt, standard colour, light.	3 x 500g glass jars	<i>Steritech Pty Ltd</i>
14	Liquid honey, produced from sources other than Eucalypt, standard colour, light.	3 x 500g glass jars	<i>Steritech Pty Ltd</i>
15	Liquid honey, produced from Eucalypt, standard colour, medium.	3 x 500g glass jars	<i>Steritech Pty Ltd</i>
16	Liquid honey, produced from sources other than Eucalypt, standard colour, medium.	3 x 500g glass jars	<i>Steritech Pty Ltd</i>
17	Liquid honey, standard colour, dark.	3 x 500g glass jars	<i>Steritech Pty Ltd</i>
(S018)	CHAMPION LIQUID HONEY - Ribbon and certificate for the best Exhibit in Classes 13 to 17.		
(S018A) - RAS of NSW Award of Excellence Medallion for Champion Liquid Honey			

LIQUID HONEY - NATIVE

Class No.	Class Description	Quantity Required for Entry	Class Prize Money Supported by
19	Liquid honey, any colour, produced by <i>Tetragonula carbonaria</i> .	2 x 100ml glass bottles	<i>Australian Native Bee Association Inc</i>
20	Liquid honey, any colour, produced by <i>Tetragonula hockingsi</i> .	2 x 100ml glass bottles	<i>Royal Agricultural Society of NSW</i>
21	Liquid honey, any colour, produced by <i>Austroplebeia</i> .	2 x 100ml glass bottles	<i>Australian Native Bee Association Inc</i>

NATURAL GRANULATION AND CREAMED HONEY

Class No.	Class Description	Quantity Required for Entry	Class Prize Money Supported by
22	Natural granulation honey, fine grain.	3 x 500g glass jars	<i>Royal Agricultural Society of NSW</i>
23	Natural granulation honey, coarse grain.	3 x 500g glass jars	<i>Royal Agricultural Society of NSW</i>
24	Creamed honey, fine grain.	3 x 500g glass jars	<i>Royal Agricultural Society of NSW</i>
(S025)	CHAMPION NATURAL GRANULATION OR CREAMED HONEY - Ribbon and certificate for the best Exhibit in Classes 22 to 24.		
(S025A) - RAS of NSW Award of Excellence Medallion for Champion Natural Granulation or Creamed Honey			

COMB HONEY

Class No.	Class Description	Quantity Required for Entry	Class Prize Money Supported by
26	Frame of comb honey, in full depth Langstroth frame.	1 x frame	<i>Royal Agricultural Society of NSW</i>
<i>(S026A) - Prize Voucher supported by Queen B. Prize 1st \$100</i>			
27	Frame of comb honey, in ideal frame.	1 x frame	<i>Royal Agricultural Society of NSW</i>
<i>(S027A) - Prize Voucher supported by Queen B. Prize 1st \$100</i>			
(S028)	CHAMPION COMB HONEY - Ribbon and certificate for the best Exhibit in Classes 26 and 27.		
<i>(S028A) - Prize Voucher supported by Queen B. Prize \$100</i>			
(S029)	SUPREME CHAMPION EXHIBIT - Champions from (S003), (S010), (S018), (S025) and (S028) are eligible.		

CHUNK HONEY

Class No.	Class Description	Quantity Required for Entry	Class Prize Money Supported by
30	Liquid chunk honey, containing a piece of comb honey of the same source (measuring at least 40mm x 110mm).	3 x 500g glass jars	<i>Royal Agricultural Society of NSW</i>

MOST SUCCESSFUL EXHIBITOR IN HONEY CLASSES

Class No.	Class Description
(S031)	MOST SUCCESSFUL EXHIBITOR IN HONEY CLASSES - Ribbon for the most successful Exhibitor in Classes 13 to 30. (EXCLUDING NATIVE)

MEAD

Class No.	Class Description	Quantity Required for Entry	Class Prize Money Supported by
32	Traditional or Straight Honey Mead.	2 x 375ml unlabelled clear bottles	<i>Stone Dog Meadery</i>
33	Melomel or Fruit Mead.	2 x 375ml unlabelled clear bottles	<i>Stone Dog Meadery</i>
34	Spiced Mead.	2 x 375ml unlabelled clear bottles	<i>Stone Dog Meadery</i>
(S035)	CHAMPION MEAD - Ribbon and certificate for best Exhibit in Classes 32 to 34.		

SMALL PRODUCERS CLASSES

Exhibitors must have 20 or less colonies to be eligible.

Class No.	Class Description	Quantity Required for Entry	Class Prize Money Supported by
36	Liquid honey, standard colour, very light.	3 x 500g glass jars	<i>Royal Agricultural Society of NSW</i>
37	Liquid honey, standard colour, light.	3 x 500g glass jars	<i>Royal Agricultural Society of NSW</i>
38	Liquid honey, standard colour, medium.	3 x 500g glass jars	<i>Royal Agricultural Society of NSW</i>
39	Liquid honey, standard colour, dark.	3 x 500g glass jars	<i>The Rutledge Family</i>
<i>(S039B) - Cash Prize supported by The Rutledge Family. Prize 1st \$50</i>			
40	Liquid honey, any colour, from flow hive.	3 x 500g glass jars	<i>Flow Hive</i>
<i>(S040B) - Prize Voucher for a Flow Hive 2+ with 6 Flow Frames & Hive Stand in Western Red Cedar supported by Flow Hive. Prize 1st \$1,219</i>			
(S041)	CHAMPION SMALL PRODUCERS EXHIBIT - LIQUID HONEY - Ribbon and certificate for the best Exhibit in Classes 36 to 40.		
<i>(S041A) - RAS of NSW Award of Excellence Medallion for Champion Small Producers Exhibit Liquid Honey.</i>			
42	Natural granulation honey, fine grain.	3 x 500g glass jars	<i>Royal Agricultural Society of NSW</i>
43	Creamed honey, fine grain.	3 x 500g glass jars	<i>Royal Agricultural Society of NSW</i>
44	Comb honey - cut comb displayed in 11cm ² clear plastic containers - no decorating.	3 x 450g sections	<i>Royal Agricultural Society of NSW</i>
45	Beeswax, natural yellow, not less than 1kg (block shape to be round, square or rectangular).	1 x block	<i>Royal Agricultural Society of NSW</i>
(S046)	CHAMPION SMALL PRODUCERS EXHIBIT - OTHER - Ribbon and certificate for the best Exhibit in Classes 42 to 45.		
(S047)	SUPREME CHAMPION SMALL PRODUCERS EXHIBIT - Champions from (S041) and (S046) are eligible.		
(S048)	MOST SUCCESSFUL EXHIBITOR IN SMALL PRODUCERS CLASSES - Ribbon for the most successful Exhibitor in Classes 36 to 45.		
(S049)	BEST EXHIBIT IN SHOW - Supreme Champions from (S029) and (S047) are eligible.		

SCHOOL CLASSES

Class No.	Class Description	Quantity Required for Entry	Class Prize Money Supported by
50	Liquid honey, standard colour, light.	3 x 500g glass jars	Royal Agricultural Society of NSW
51	Liquid honey, standard colour, dark.	3 x 500g glass jars	Royal Agricultural Society of NSW
(S052)	CHAMPION SCHOOL EXHIBIT - Ribbon and certificate for best Exhibit in Classes 50 and 51.		

COMMERCIAL CLASSES

Honey packers and producer honey packers are eligible for Commercial Classes and all honey entered must be commercially available.

Class No.	Class Description	Quantity Required for Entry
60	Liquid honey, standard colour, light.	12 x 500g jars consisting of: - 6 x for display with commercial labels - 6 x clean skinned
61	Liquid honey, standard colour, medium.	12 x 500g jars consisting of: - 6 x for display with commercial labels - 6 x clean skinned
62	Creamed honey, fine grained.	12 x 500g jars consisting of: - 6 x for display with commercial labels - 6 x clean skinned
(S063)	CHAMPION COMMERCIAL HONEY EXHIBIT - Ribbon and Certificate, for the best Exhibit in Classes 60 to 62.	
<p><i>(S063A) - RAS of NSW Award of Excellence Medallion for Champion Commercial Honey Exhibit.</i></p> <p><i>(S063B) - The Phillip Carter Memorial Annual Trophy for Champion Commercial Honey Exhibit, supported by Royal Agricultural Society of NSW.</i></p> <p><i>This trophy commemorates over 20 years of service given to the Honey Competition by the late Mr Phillip Carter.</i></p>		

WANT TO JOIN THE RAS SUPPORTERS PROGRAM IN 2022?

Become an integral part of the Show and join our Supporters Program. Prize Supporters of Sydney Royal Competitions enjoy benefits that include free entry to the Show and written acknowledgement across a broad range of publications and websites. Supporter prizes enhance the prestige and profile of the Competition, and provide a tangible reward for proud winners.

Prize Supporters can be individuals, clubs or associations. Most Supporters have an association or attachment to the Class that they support - it might be that they have previously won that Class, or wish to encourage competition in that area.

To join up, identify the section or Class you would like to support. Decide whether a cash prize or a trophy is most appropriate; then contact the Prize Coordination Centre. Prizes can be cash, gift vouchers or annual trophies.

Foster excellence at the Show and associate with success by becoming a Supporter today.

To register your interest or to find out more, please contact the Prize Coordination Centre on (02) 9704 1462 or email prizes@rasnsw.com.au

PERPETUAL TROPHIES

The purpose of competition at the Sydney Royal Easter Show is to encourage agricultural and pastoral excellence, ensuring the continual improvement of standards. In the 1870s the Society introduced regulations to govern judges and judging to ensure that competition was consistent and fair, and the tradition of Perpetual Trophies dates back to this time.

The Perpetual Trophies are the most prestigious of all RAS awards. They have a dual function in recognising superior effort in competition and commemorating people and organisations that have had a long and meritorious connection with the Society. Some of the trophies currently competed for were first won in 1911. Winners of Perpetual Trophies are permanently honoured, taking their place alongside past winners and becoming part of the ongoing tradition of the RAS.

The Perpetual Trophy Collection of the RAS is unique. It comprises a wide range of beautiful and elegant trophies that illustrate an extraordinary history of agricultural judging and the pursuit of excellence.

Enquiries regarding the donation of Perpetual Trophies should be directed to the RAS Heritage Centre.

SERVICE CENTRE

The Competitions Administration arm of the RAS Service Centre aims to provide an efficient and friendly service to our valuable customers. The Centre provides processing support and customer service in relation to Agricultural Competition Applications for Entry.

For enquiries regarding general competition information such as judging details, timetables, Competitor/Exhibitor confirmation packs, please visit www.rasnsw.com.au or contact the Coordinator responsible for your section.

NOTES

NOTES



Royal Agricultural Society of NSW

Membership applications are now open

The Royal Agricultural Society of NSW (RAS) has been an influential force in the direction and development of Australian agriculture through competitions, education and events since our foundation in 1822. And every step we have taken has been with our Members by our side. Our Members are as much a part of our history as our founders and we wouldn't exist without them.

Become a Member of the RAS and enjoy a discount on entry fees to the Sydney Royal National Honey Show plus receive:

Year Round Benefits

- Reciprocal privileges to selected games at Stadium Australia (previously ANZ Stadium)
- Access to various discounts and special offers all year round
- The RAS Times magazine delivered three times a year. Informative and entertaining, this magazine includes valuable membership information

Showtime Benefits

- Unlimited entry for the duration of the Show
- Purchase Member Reserve wristbands* so that you can bring along family and friends to access members areas
- Purchase up to three (3) Guest Card's at \$101 each for unlimited entry including access to the Members facilities
- Access to Members Dining, Entertainment and seating areas in GIANTS Stadium and Woodchop Stadium
- Access to Members Facilities including Lounge area, Customer Service, Cloak Room, Parents' Room, Free Wi-Fi within the Members area and buggy service for transporting less mobile Members
- Purchase discounted ride coupons from the Members Desk at GIANTS Stadium every day of the Show
- Access to Members only preview night

A joining fee of \$50 applies

To take advantage of this special offer, go to www.rasnsw.com.au/membership or call 02 9704 1144 and quote the promo code: HONEY22

No joining fee for junior or youth categories. Your membership must be active prior to submitting competitor entries to receive Exhibitor discount. RAS Membership is non-refundable.

* Subject to COVID 19 restrictions

Please note: Conditions apply to some reciprocal benefits and may exclude some events at participating venues.

To find out more information please visit www.rasnsw.com.au/members or call 02 9704 1144.

