



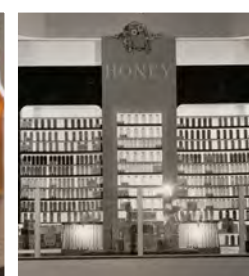
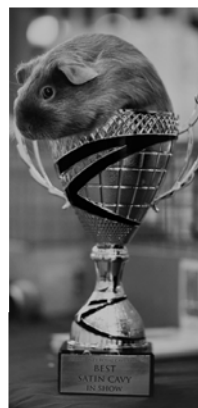
Royal Agricultural Society of NSW

# Schedule

## Sydney Royal Beef Cattle & Steer Show

8 - 19 April 2022  
Sydney Showground  
Sydney Olympic Park  
[www.rasnsw.com.au](http://www.rasnsw.com.au)

*Sydney Royal*  
SINCE 1822



## WANT TO JOIN THE RAS SUPPORTERS PROGRAM IN 2022?

Become an integral part of the Show and join our Supporters Program. Prize Supporters of Sydney Royal Competitions enjoy benefits that include free entry to the Show and written acknowledgement across a broad range of publications and websites. Supporter prizes enhance the prestige and profile of the Competition, and provide a tangible reward for proud winners.

Prize Supporters can be individuals, clubs or associations. Most Supporters have an association or attachment to the Class that they support - it might be that they have previously won that Class, or wish to encourage competition in that area.

To join up, identify the section or Class you would like to support. Decide whether a cash prize or a trophy is most appropriate; then contact the Prize Coordination Centre. Prizes can be cash, gift vouchers or annual trophies.

Foster excellence at the Show and associate with success by becoming a Supporter today.

To register your interest or to find out more, please contact the Prize Coordination Centre on (02) 9704 1462 or email [prizes@rasnsw.com.au](mailto:prizes@rasnsw.com.au)

---

## PERPETUAL TROPHIES

The purpose of competition at the Sydney Royal Easter Show is to encourage agricultural and pastoral excellence, ensuring the continual improvement of standards. In the 1870s the Society introduced regulations to govern judges and judging to ensure that competition was consistent and fair, and the tradition of Perpetual Trophies dates back to this time.

The Perpetual Trophies are the most prestigious of all RAS awards. They have a dual function in recognising superior effort in competition and commemorating people and organisations that have had a long and meritorious connection with the Society. Some of the trophies currently competed for were first won in 1911. Winners of Perpetual Trophies are permanently honoured, taking their place alongside past winners and becoming part of the ongoing tradition of the RAS.

The Perpetual Trophy Collection of the RAS is unique. It comprises a wide range of beautiful and elegant trophies that illustrate an extraordinary history of agricultural judging and the pursuit of excellence.

Enquiries regarding the donation of Perpetual Trophies should be directed to the RAS Heritage Centre.

---

## SERVICE CENTRE

The RAS Service Centre is made up of three departments - Competitions Administration & Systems, Membership and the Australasian Animal Registry (AAR). The Centre's purpose is to provide an efficient and friendly service to our valuable customers. The Centre provides processing support and customer service in relation to Agricultural Competition Applications for Entry.

For enquiries regarding general competition information such as judging details, timetables, Competitor confirmation packs, please visit [www.rasnsw.com.au/cattle](http://www.rasnsw.com.au/cattle) or contact the Cattle Coordinator.

Cattle Section  
Royal Agricultural Society of NSW  
Locked Bag 4317  
Sydney Olympic Park, NSW, 2127  
02 9704 1159  
[cattle@rasnsw.com.au](mailto:cattle@rasnsw.com.au)





## Welcome from the President



With a proud history of running competitions for the benefit of breeders, producers and craftspeople going back to 1823, the Royal Agricultural Society of NSW today welcomes entries from right across Australia to be judged at the Sydney Royal Easter Show.

Our competitions were established to improve the quality of produce and animal breeds and that has not changed over the past 200 years. Our vision is for a community that understands and values sustainable Australian agriculture and award-quality produce, and this vision is fulfilled with each entry in our competitions.

Initially, we assessed livestock before adding tobacco, coffee, wine, and precious stones and diamonds in our early years. As the young colony of New South Wales evolved, we added domestic pets, arts and crafts, foodstuffs and even ostriches were judged in 1882.

Your decision to enter this competition ensures your place in our history. You are taking your place along with more than 30,000 others with a willingness to be judged and assessed, and introduces your entry to Showgoers, consumers, exhibitors and our highly regarded judges.

Sydney Royal competitions evolve and progress each year, in part due to the innovation and enthusiasm of competitors, and also in response to consumer and industry trends. It is this spirit that saw us introduce, amongst others, classes for canaries (1873), woodchopping (1899), potato crops (1927), campdraft (1934), and even pedigree guinea pigs (1977). This willingness to change and grow guarantees Sydney Royal medals remain relevant, valued, and worth striving for.

Winning an award in a Sydney Royal competition confirms the exceptional standard of your entry and provides marketing opportunities on many levels. It is an incredible acknowledgement of your hard work and dedication as judged by our esteemed panels of judges. As I thank you for considering our competitions, I also thank our judges, stewards, sponsors, committees and supporters.

Whether your entry is awarded a ribbon or not, I hope that you enjoy and ultimately benefit from this Sydney Royal experience, and I wish you the very best of luck.

Michael Millner  
President, Royal Agricultural Society of NSW

## EXHIBITOR INFORMATION

### CLOSING DAYS OF ENTRY AND ENTRY FEES FOR 2022

All Entry Fees are GST inclusive and non-refundable.

COMPETITION	CLOSING DAY OF ENTRY	ENTRY FEES PER CLASS/COMPETITION (incl. GST)
<b>ALL ENTRIES FOR BEEF CATTLE AND STEER COMPETITIONS FOR THE 2022 SYDNEY ROYAL CATTLE SHOW WILL BE ONLINE.</b> <b>THERE WILL BE NO OFFLINE PROCESSING FACILITY FOR THESE COMPETITIONS.</b> <b>LATE ENTRIES AND SUBSTITUTIONS WILL BE PROCESSED OFFLINE.</b>		
All Entry Fees are GST inclusive and are non-refundable.		<b>FEES PER CLASS/COMPETITION</b>
<b>BEEF CATTLE COMPETITION</b>	<b>ONLINE ENTRIES</b> WEDNESDAY 16 FEBRUARY 2022  <b>SUBSTITUTIONS AND WITHDRAWALS</b> WEDNESDAY 9 MARCH 2022	RAS Members \$78 per Single Class Entry Non Members \$104 per Single Class Entry RAS Members \$19 per Group Class Entry Non Members \$25 per Group Class Entry  Bedding \$75 per head
<b>PUREBRED STEER &amp; CARCASE COMPETITION</b>	<b>ONLINE ENTRIES</b> WEDNESDAY 16 FEBRUARY 2022	RAS Members \$113 per Entry Non Members \$150 per Entry
<b>TRADE HOOF &amp; CARCASE COMPETITION</b>	<b>ONLINE ENTRIES</b> WEDNESDAY 16 FEBRUARY 2022	RAS Members \$113 per Entry Non Members \$150 per Entry
<b>DAIRY CATTLE COMPETITION</b>	<b>ONLINE ENTRIES</b> WEDNESDAY 23 FEBRUARY 2022  <b>SUBSTITUTIONS AND WITHDRAWALS</b> WEDNESDAY 16 MARCH 2022	RAS Members \$78 per Single Class Entry Non Members \$104 per Single Class Entry RAS Members \$19 per Group Class Entry Non Members \$25 per Group Class Entry  Bedding \$75 per head

#### LATE ENTRY

A Late Entry may be made by an Exhibitor provided that the Exhibitor has an entry in their name or partnership's name.  
 A Late Entry will only be available pending entry numbers at closing Day of Entry for Substitutions and Withdrawals, and may be permitted at the discretion of the Cattle Committee.  
 Late Entry Fee does not include Bedding Fee of \$75 (incl. GST) for Beef Cattle and Dairy Cattle Competitions.

<b>BEEF CATTLE COMPETITION</b>	FRIDAY 25 MARCH 2022	\$300 (incl. GST)
<b>PUREBRED STEER &amp; CARCASE COMPETITION</b>	FRIDAY 25 MARCH 2022	\$300 (incl. GST)
<b>TRADE HOOF &amp; CARCASE COMPETITION</b>	FRIDAY 25 MARCH 2022	\$300 (incl. GST)
<b>DAIRY CATTLE COMPETITION</b>	FRIDAY 1 APRIL 2022	\$300 (incl. GST)

#### WITHDRAWALS & REFUNDS

Entry Fees are non-refundable.  
 Bedding Fee of \$75 will be refunded provided that written notification of withdrawal is received no later than the following dates:

<b>BEEF CATTLE COMPETITION</b>	WEDNESDAY 9 MARCH 2022
<b>DAIRY CATTLE COMPETITION</b>	WEDNESDAY 16 MARCH 2022

## EXHIBITOR INFORMATION (continued)

COMPETITION	CLOSING DAY OF ENTRY	FEES PER COMPETITION (incl. GST)
All Entry Fees are GST inclusive and are non-refundable.		Offline Entries
BEEF CATTLE JUNIOR PARADERS' COMPETITION (F000)	12 NOON WEDNESDAY 6 APRIL 2022	FREE
BEEF CATTLE SCHOOL PARADERS' COMPETITION (F001)	12 NOON WEDNESDAY 6 APRIL 2022	FREE
RAS/ASC BEEF CATTLE PARADERS' STATE FINAL (F002)	THROUGH THE ASC PARADER COMPETITIONS	FREE
BEEF CATTLE OPEN PARADERS' COMPETITION (F003)	12 NOON WEDNESDAY 6 APRIL 2022	\$6
RAS YOUTH SHOW (BEEF)	12 NOON MONDAY 11 APRIL 2022	\$10
HEIFER FITTING CHALLENGE (BEEF)	12 NOON SATURDAY 9 APRIL 2022	FREE
DAIRY CATTLE PARADERS' COMPETITIONS (Classes 800, 801, 802, 803, 804 & 805)	12 NOON FRIDAY 15 APRIL 2022	FREE
DAIRY ALL BREEDS YOUTH CLASS COMPETITION	12 NOON SUNDAY 17 APRIL 2022	\$6
SEMEX DAIRY YOUTH CHALLENGE	Enquiries to be directed to: April Browne SRES Dairy Youth Committee Coordinator Mobile: 0409 222 563 All entries to be submitted the evening prior to the event.	
YOUNG AUCTIONEERS COMPETITION	Judging Day: Friday 8 April 2022 Administered by the Australian Livestock & Property Agents Association.	

## SALE LISTINGS

Exhibitors have the opportunity to list their exhibit as **FOR SALE** in the 2022 Beef Cattle Catalogue.

For a fee of \$25 (inc GST) your exhibit will be listed and highlighted in the 2022 Beef Cattle Catalogue as for PRIVATE SALE or SALE NAME, DATE and LOCATION. Sale Listing Fee is payable with entries.

## UPDATES FOR 2022

### Purebred Steer & Carcase Competition

Please note new liveweight parameters as follows:

Lightweight = 350kg - 440kg

Middleweight = 441kg - 550kg

Heavyweight = 551kg and over

### Onsite loft accommodation

Please note onsite loft accommodation will only be available to Exhibitors who have three (3) or more Exhibits, excluding calves at foot, at time of arrival/bump in.

### Calving cows

New regulation (number 9) for Beef Cattle, regarding calving cows and minimum age of calves.

## IMPORTANT INFORMATION

### ● THE COMMITTEE

The Committee is responsible for the organisation and conducting of a Competition, and has the authority to make any determination upon any matter.

The Committee is empowered to do all things necessary or desirable to that end, and any decision or discretion of the Committee referred to in these Special Regulations may be exercised in such manner as the Committee deems fit, with the Committee being the final arbiter on any matters arising in relation to the Competition.

### ● APPLICATIONS FOR ENTRY

**All entries for Beef Cattle and Steer Competitions for the 2022 Sydney Royal Cattle Show will be online.** There will be **NO OFFLINE** processing facility for these competitions. Late Entries and Substitutions will be processed offline.

To enter online, simply visit [www.rasnsr.com.au/cattle](http://www.rasnsr.com.au/cattle)

### ● INCORRECT AND INCOMPLETE APPLICATIONS FOR ENTRY

A Fee of \$25 may be charged by the RAS, at its discretion, for each Application for Entry which is incorrect, incomplete or requires adjustments, due to Exhibitor error when making the Application for Entry, whether the Application for Entry be submitted online or offline.

### ● RAS MEMBERSHIP DISCOUNTS

In order for Exhibitors to claim the RAS Member discount on Entry Fees for this Competition, Membership subscriptions must be paid and accepted by the RAS before entering this Competition, and details must be provided on your Application for Entry prior to submitting to the RAS. No adjustments will be provided after the Application for Entry has been submitted. The Membership Name must be: (i) where the Exhibitor is a single Person, the Exhibitor Name; (ii) where the Exhibitor is more than one Person or a partnership, one of the Persons forming that partnership; or (iii) where the Exhibitor is a firm or company, the Authorised Contact Person/Representative of that firm or company. **Members who are not financial at the time of submitting their Entry Fees will not be eligible for the entry discount.**

Visit [www.rasnsr.com.au/members](http://www.rasnsr.com.au/members) for more information on Membership or call 02 9704 1144.

**Entry Fee reductions are dependent upon Class(es) being entered. Non-member Entry Fees apply for Exhibitors where they are not financial members of the RAS. Applicants acknowledge that a valid RAS membership number must be provided at the time of submitting their application in order to receive the applicable discount.**

### ● DEFINITION OF AN EXHIBITOR

Exhibitor means for each Competition, the Person on whose behalf an Application for Entry is lodged with and accepted by the RAS, and includes the representatives and agents of an Exhibitor. Person includes a natural person, firm, partnership, company or corporation. The following is an example of three different Exhibitors in one Competition representing partnerships made up of different persons:

1. Smith, Jones & Clarke
2. Smith, Taylor & Johns
3. Smith, Taylor, Johns & Clarke

If are entering Exhibits under a partnership, the same name should be placed at the beginning of each partnership as shown above.

### ● EXHIBITOR RECORD AND TAX INVOICE

For the Exhibitor's record, a copy of each Application for Entry or online confirmation report should be retained.

Upon receipt of payment by the RAS, the offline Application for Entry becomes a tax invoice, and for online Applications for Entry, a confirmation email and tax invoice will be issued.

### ● EXHIBIT CONFIRMATION ADVICE (BENCHSLIPS) AND DASHBOARD SLIPS

Please note that an Exhibit Confirmation Advice (Benchslip) is required for access to the Showground. A Dashboard Slip will also be issued to Exhibitors with the Showtime Authorised Contact Person's mobile number printed on the slip. A Dashboard Slip must be displayed on the dashboard of each vehicle at all times while on the Showground.

### ● ACCOMMODATION

Due to the evolving situation with respect to COVID-19, on-site accommodation arrangements may change. More information about on-site accommodation will be communicated with Exhibitors closer to the 2022 Show.

### ● REGISTRATION VERIFICATION

All processed entries will be forwarded to the relevant breed society for verification. Registration certificates are required at the inspection of stud cattle. Exhibitors are NOT to post or send registration certificates or copies thereof to the RAS.

### ● ANIMAL HEALTH

All Exhibitors are required to complete the **National Cattle Health Declaration (V: 16/04/20)**.

The National Cattle Health Declaration must be signed by the owner or the person responsible for the cattle.

In addition, Exhibitors must provide certification that animals entered for Competition in all Cattle Classes, including calves at foot, have been tested for Pestivirus and certified as non PI (Persistently Infected). Certification must be provided in the form of a laboratory report or signed Veterinary Certificate, listing animals and their identification. Animals previously tested and certified as non PI are not required to be retested, however certification must be provided.

**The National Cattle Health Declaration (V: 16/04/20) and non PI certification must be submitted by Wednesday 16 February 2022.**

## ● STOCK MOVEMENT AND IDENTIFICATION

All stock must comply with NSW legislation in relation to animal movements and stock identification. Any stock found in breach of these requirements may be excluded from Competition and requested to leave the grounds. Any costs relating to a breach issue are the responsibility of the Exhibitor.

## ● PRIZES AND GST

The Australian Taxation Office has deemed that GST is payable on prizes if an Exhibitor is registered for GST and enters an Exhibit as part of a business enterprise.

The information an Exhibitor provides on the Application for Entry determines whether GST is applicable.

Any prize stated in this Schedule *does not include* GST.

**GST will not apply:**

- if an Exhibitor enters an Exhibit as a hobby or private recreational pursuit; or
- if an Exhibitor enters an Exhibit as part of a business enterprise, the Exhibitor has an ABN, but the Exhibitor is NOT REGISTERED for GST.
- if an Exhibitor enters an Exhibit as part of a business enterprise the Exhibitor is not entitled to an ABN as the business or enterprise is not operating in Australia.

**GST will apply:**

- if an Exhibitor enters an Exhibit as part of a business enterprise, the Exhibitor has an ABN, and the Exhibitor is REGISTERED for GST.

Where GST applies, the RAS will pay the prize money quoted in this Schedule plus 10% GST. The RAS will issue a recipient created tax invoice.

**WARNING:** *The Exhibitor must complete the **Tax Details** on the Application for Entry. Failure to do so will result in the RAS deducting 47% of the successful Exhibitor's prize money as Pay As You Go Tax (PAYG). The RAS recommends that the Exhibitor seeks professional advice before completing the Tax Details.*

## ● CONDITIONS OF ENTRY

Exhibitors must adhere to the Conditions of Entry to Sydney Showground located at [www.rasnsw.com.au](http://www.rasnsw.com.au), the RAS General Regulations and the Special Sydney Royal Purebred Steer & Carcase, Trade Hoof & Carcase and Beef Cattle Competitions Regulations in this Schedule (the "Regulations").

A condition of entering into Competitions is strict adherence to the Regulations. Accordingly, Applications for Entry in the name of deceased Person(s) are not eligible for entry.

The Application for Entry and the Regulations constitute the whole agreement upon which Entries are submitted and the Exhibitor agrees that all representations and statements not appearing on the Application for Entry or in the Regulations are excluded.

The Exhibitor certifies that each animal Exhibited by them or by their child/children/guardian is duly registered and either their property absolutely or is under their absolute care and control. The Exhibitor holds the RAS exempt from any liability in the event of any loss or damage from any cause whatsoever.

The RAS has the power to evict any Exhibitor from the Showground in the event of a breach of the Conditions of Entry to Sydney Showground, RAS General Regulations and/or the Rules and Regulations in the 2022 Sydney Royal Cattle Show Schedule.

## ● WORKING WITH CHILDREN

Exhibitors must comply with all applicable Working with Children Legislation.

The Exhibitor agrees to produce on demand, at least 1 month before Competition, evidence of working with children checks for themselves, their employees or volunteers who are involved in a child-related role or have direct unsupervised contact with children.

## ● WORKPLACE SURVEILLANCE ACT

RAS operates surveillance cameras from Sydney Showground Security and these are located in and around facilities requiring security monitoring for the safety or security of individuals or property. RAS also has access to Sydney Olympic Park security cameras and vice versa. Please note that security camera monitoring is continuous and ongoing and it is deemed that a person, by entering the Showground, consents to this photographing, filming or taping. RAS strictly complies with the Workplace Surveillance Act 2005.

## ● PERPETUAL TROPHIES

Perpetual Trophies remain the property of the Royal Agricultural Society of NSW. Ownership of the Trophy does not pass to the winning Exhibitor. A medallion will be presented to the annual winner whose name will be engraved on the Trophy.

## ● SUPPORTER PRIZES

Prizes are provided by third parties and the RAS advises that any such Prize may be subject to change or amendment occurring at any time, thereby making the original information published incorrect.

## ● DISCLAIMER

The information contained in this publication is gathered for the purpose of providing information to our Exhibitors and Show patrons. The information is a compilation of information provided by third parties and the RAS does not warrant its accuracy and advises that any such information may be subject to change or amendment occurring at any time and thereby making the information incorrect. Subject to the RAS' legal obligations and responsibilities. If you require confirmation of any information please telephone the RAS coordinator responsible for the particular information or the RAS switchboard on (02) 9704 1111.

## **2022 CATTLE COMMITTEE**

A J Hamilton (Co-Chair)

M A MacCue (Co-Chair)

G R Cochrane

S J B Davies

E M Downes

A J Rayner

S R Wakeford

G R Watson

B J Wilson

## **HONORARY MEMBERS OF COMMITTEE**

P J Bruem AM (Hon. Councillor)

W H P Charles OAM (Hon. Councillor)

W P G Davies (Hon. Vice President)

E H Downes (Hon. Councillor)

K J Everett (Hon. Vice President)

F G Hooke BVSc MRCVS (Hon. Vice President)

F R King (Hon. Vice President)

N S Russell (Hon. Vice President)

R H Smith (Hon. Councillor)

W R Watson (Hon. Vice President)



## 2022 SYDNEY ROYAL BEEF CHALLENGE

<b>CLOSING DAY OF ENTRY</b>	<b>100 DAY EXPORT CLASS</b> MONDAY 14 MARCH 2022 <b>70 DAY DOMESTIC CLASS</b> MONDAY 18 APRIL 2022	
<b>ENTRY FEES</b> <i>All Entry Fees are GST inclusive and non-refundable.</i>	<b>RAS MEMBERS</b> \$90 for each pen of 6 <b>NON MEMBERS</b> \$120 for each pen of 6	
<b>ARRIVAL</b>	<b>100 DAY EXPORT CLASS</b>  <b>ARRIVAL AT WILGA FEEDLOT</b> TUESDAY 15 MARCH - THURSDAY 17 MARCH 2022  <b>ONTO GRAIN</b> MONDAY 21 MARCH 2022	<b>70 DAY DOMESTIC CLASS</b>  <b>ARRIVAL AT WILGA FEEDLOT</b> TUESDAY 19 APRIL - THURSDAY 21 APRIL 2022  <b>ONTO GRAIN</b> MONDAY 25 APRIL 2022
	To allow for compensatory weight gain, all animals will be given time to settle in a holding paddock. All stock will be fed hay for a period of five days prior to the initial Competition weigh in.	
<b>LIVE ASSESSMENT</b>	<b>LIVE ASSESSMENT AND JUDGING AT WILGA FEEDLOT</b> FRIDAY 1 JULY 2022	
<b>COMPETITION CONTACTS</b>	<b>WILGA FEEDLOT</b> Michael MacCue <a href="mailto:mdmaccue@bigpond.com">mdmaccue@bigpond.com</a> <b>RAS CATTLE SECTION</b> Lucinda Ross 02 9704 1159 <a href="mailto:cattle@rasnsw.com.au">cattle@rasnsw.com.au</a>	

### OVERALL POINTS ALLOCATION (per pen)

Live Assessment	Feedlot Total	Carcase Grid	Carcase Judging	Profit & Loss	Exhibitor Carcase Selection	Eating Quality	TOTAL
75 points	300 points	150 points	200 points	200 points	25 points	50 points	1000 points

Place ribbons will be awarded for each of the above components for pen results only.  
 Champion and Reserve Champion ribbons will be awarded for individual animals and pens.

### MEDAL SYSTEM

The Sydney Royal Medal System is utilised in the Beef Challenge, specifically in the Eating Quality component, to better recognise those entries that meet the appropriate score levels to qualify for a bronze, silver or gold medal.

The following points system is applied in the Sydney Royal Medal System for the Beef Challenge.

Medal	100 Day Export Class Eating Quality	70 Day Domestic Class Eating Quality
	MSA Index Score	MSA Index Score
Gold	6 animals with MSA index score $\geq 62.35$	6 animals with MSA index score $\geq 62.35$
Silver	5 animals with MSA index score $\geq 62.35$	5 animals with MSA index score $\geq 62.35$
Bronze	4 animals with MSA index score $\geq 62.35$	4 animals with MSA index score $\geq 62.35$

## SPECIAL REGULATIONS - BEEF CHALLENGE

1. The Royal Agricultural Society of NSW (RAS) run this Competition in accordance with the terms and conditions set out in the RAS General Regulations, the Special Regulations, and the 2022 Sydney Royal Beef Cattle & Steer Show Schedule.
2. Pens will consist of six animals, and can be made up of steers and/or heifers.
3. Pens will consist of six animals, and can be made up of steers and/or heifers.
4. All six animals contribute to the final score. If a death loss occurs, no points will be assigned to the animal, with deaths counted as a loss in P/L.
5. A BRD/IBR vaccination will be provided at induction.
6. Feeding of cattle for the **70 day Domestic Class** and **100 day Export Class** will be at Wilga Feedlot (WF) Bellata.
  - Steers/heifers for the **100 day Export Class** must arrive with a completed NVD (National Vendor Declaration) by **3pm Thursday 17 March 2022**.
  - Steers/heifers for the **70 day Domestic Class** must arrive with a completed NVD (National Vendor Declaration) by **3pm Thursday 21 April 2022**.
  - Steers/heifers will be inducted and allowed to settle in a holding paddock on hay only for a period of 5 - 7 days, based on arrival date, prior to the initial weigh in for the Competition to allow for compensatory gain.
7. Entry values for all Classes will be determined based on current market values including but not limited to the EYCI on the day of entry onto feed. These prices are final.
8. Competition shall be a minimum of 10 entries in each Class.
9. The maximum number of entries that will be accepted in this Competition will be 55 pens of six animals for the **70 day Domestic Class**, and 35 pens of 6 animals for the **100 day Export Class**.
10. If entries exceed the maximum number of entries then Exhibitors with multiple entries may be asked to reduce their numbers.
11. No Hormonal Growth Promotants (HGP) allowed in either the 100 Day Export or 70 Day Domestic Class.
12. A live assessment for both Classes will be held approximately 7 days prior to slaughter on **Friday 1 July 2022** at Wilga Feedlot, Bellata (timing will minimise stress impact on animals prior to slaughter).
13. RAS will cover payment of feedlot costs until slaughter. At such time:
  - a) All costs associated from the Competition relating to Exhibitor entries will be deducted from final Sale proceeds;
  - b) washing of Exhibits if required by abattoir, this will be a dollar (\$) per head fee;
  - c) this includes all feed costs;
  - d) health and induction costs;
  - e) transport to abattoir;
  - f) slaughter and levy costs;
  - g) freight costs for selected cuts to the Showgrounds; and
  - h) any associated expenses.
14. Payments will be processed through Bob Jamieson Agencies at Inverell, NSW. For payments to be received, business and bank details must be provided to Bob Jamieson Agencies prior to arrival at Wilga Feedlot.
15. For the **70 day Domestic Class** an entry will consist of a pen of six steers and/or heifers showing no more than two teeth, and will not be disqualified if they break four teeth.
16. For the **100 day Export Class** an entry will consist of a pen of six steers and/or heifers showing no more than two teeth, with a 5 point deduction if they break four teeth and a 5c discount for heifers in the P/L.
17. Ineligible cattle will be excluded from continuing in the Competition under the following conditions:
  - a) Ineligible cattle on arrival:
    - **70 day domestic class**: under 270kg empty; over 440kg empty (live weight, per animal).
    - **100 day export class**: under 380kg empty (live weight, per animal).
    - Ineligible cattle will not be accepted at Wilga Feedlot and will be transported at the cost of the Exhibitor.
  - b) Ineligible cattle on exit:
    - **70 day domestic class**: under 370kg; over 560kg; four or more teeth (at weighing for exit).
    - Ineligible cattle will be marketed in the same week as the slaughter, with points still being allocated based on DWG and P/L.
  - c) If an animal dies, the pen is considered ineligible.
  - d) Pens with ineligible cattle cannot be placed in the Live Assessment.
  - e) Pens with ineligible cattle are not eligible for a Sydney Royal Medal.
18. Calved or heavily pregnant females are ineligible and will be disqualified from the Competition and transported back to the Exhibitor at the Exhibitor's expense.
19. Any animals without NLIS tags, or with NLIS tags that are not readable, will be given replacement NLIS tags at a cost of \$15 per NLIS tag.
20. Points may be deducted per animal for any animal that is not transferred correctly on the NLIS database (i.e. a warning message appears when cattle are transferred to Wilga Feedlot PIC from Exhibitor NVD PIC).
21. Animals will be processed at plants at the discretion of the buyers.
22. For the **70 day Domestic Class** and the **100 day Export Class**, the Eating Quality score will be calculated based on MSA Index scores.
23. In the case of equal first places, a count back method will be used to determine the winner.
24. All cattle will be inspected by a representative from either Australian Country Choice or Kilcoy Pastoral Company. Cattle not meeting buyer requirements will be regarded as not meeting specification and will be disqualified and marketed accordingly. Disqualified cattle will be marketed in the same week as the slaughter, with points still being allocated based on DWG and P/L.
25. The current carcass grid is supplied when entries open. As a commercial grid, these grids are subject to change. Under these circumstances, points and P/L will be based on the entry grid, however actual payments will be based on the grid at time of sale.
26. The RAS and WF and associated employees and volunteers will use all reasonable care and skill to ensure the animals health and safety, however the RAS and WF accept no responsibility for any loss or damage to any animal, person or property as a result of entering into this Competition and all entrants acknowledge that entry is at their own risk, cost and exposure.
27. The RAS has the right to decline any entrant entry into this Competition and reject any entry for any reason whatsoever and the RAS' decisions in this respect shall be final. No discussions or correspondence will be entered into with the RAS regarding reasons for any declines or rejections.
28. Comprehensive results feedback will be provided at the Sydney Royal Beef Challenge Awards Presentation Dinner.

## 2022 PUREBRED STEER & CARCASE COMPETITION

<b>CLOSING DAY OF ENTRY</b>	WEDNESDAY 16 FEBRUARY 2022	
<b>ENTRY RESTRICTIONS</b>	<b>SCHOOL SECTION:</b> ONE ENTRY PER SCHOOL	<b>OPEN SECTION:</b> UNLIMITED ENTRIES PER EXHIBITOR
<b>ENTRY FEES</b> <i>All Entry Fees are GST inclusive and non-refundable.</i> Entry Fees include bedding.	<b>RAS MEMBERS</b> \$113 per Entry	<b>NON MEMBERS</b> \$150 per Entry
<b>LATE ENTRIES</b>	<b>CLOSING DATE:</b> FRIDAY 25 MARCH 2022 \$300 (incl. GST) per single Class entry A Late Entry may be made by an Exhibitor provided that the Exhibitor has an entry in their name or partnership's name. A Late Entry will only be available pending entry numbers on Wednesday 9 March 2022, and may be permitted at the discretion of the Cattle Committee.	
<b>MSA REGISTRATION</b>	All Exhibitors in the Purebred Steer & Carcase Competition are required to be MSA registered. MSA registration numbers will be verified with MLA. For more information go to: <a href="http://www.mla.com.au/msa">www.mla.com.au/msa</a> To register online go to: <a href="http://registerproducer.msagrading.com.au">http://registerproducer.msagrading.com.au</a>	
<b>ARRIVAL</b>	8am, Monday 4 April to 8am, Wednesday 6 April 2022. <b>All Cattle are to be on the Showground by 8am, Wednesday 6 April 2022.</b>	
<b>INSPECTIONS, WEIGHING &amp; SCANNING</b>	Inspections, weighing and scanning will take place on Wednesday 6 April 2022.	
<b>JUDGING</b> <i>Due to Health Regulations, Exhibitors will NOT be permitted into the Abattoir.</i>	<b>LIVE</b> Friday 8 April 2022	<b>CARCASE</b> Tuesday 12 April 2022
<b>AUCTION/SALE OF STEERS</b>	<b>AUCTION</b> Friday 8 April 2022	
<b>DEPARTURE</b>	All steers will be loaded for transportation to the abattoir on Sunday 10 April 2022.	
<b>HEALTH DECLARATIONS</b>	Exhibitors MUST complete the <b>National Cattle Health Declaration (V: 16/04/20)</b> , and submit the form along with Pestivirus results, with entries, to be received by the Cattle Section by <b>Wednesday 16 February 2022</b> .	
<b>VENDOR DECLARATIONS, EXHIBIT CONFIRMATION ADVICE &amp; DASHBOARD SLIPS</b>	Exhibit Confirmation Advices (Benchslips) and Dashboard Slips will be forwarded to Exhibitors prior to steers arriving on the Showground. The Exhibit Confirmation Advice, together with the Dashboard Slip, will allow Exhibitors vehicle entry to the Showground. The Dashboard Slip will be issued to Exhibitors with the Showtime Authorised Contact Person's mobile number printed on the slip. Dashboard Slips must be displayed on the dashboard of the vehicle at all times while on the Showground. All Exhibitors must present an <b>EXHIBIT CONFIRMATION ADVICE</b> , a completed <b>NATIONAL VENDOR DECLARATION</b> and a <b>MSA VENDOR DECLARATION</b> from the same property of origin at the Inspections, Weighing and Scanning on Wednesday 6 April 2022. Failure to present these documents will result in the Exhibit not being processed for the Competition.	
<b>ACCOMMODATION</b>	Due to the evolving situation with respect to Covid-19, on-site accommodation arrangements may change. More information about on-site accommodation will be communicated with Exhibitors closer to the 2022 Show. <b>Onsite accommodation in the lofts will only be available to Exhibitors who have three (3) or more Exhibits, excluding calves at foot, at time of arrival/bump in.</b> Due to Fire regulations, <b>a maximum of 3 persons will be permitted per loft.</b> Sleeping downstairs in the tackroom/locker is not permitted under any circumstances. Please note: <ul style="list-style-type: none"> <li>• <b>Persons under the age of 18 years are NOT permitted to stay overnight on the Showground, unless accompanied by an adult.</b></li> <li>• <b>Lofts and tackrooms are not mutually exclusive and must be shared, in accordance with any Covid-19 restrictions and regulations, where multiple Exhibitors are stalled in a row.</b></li> </ul>	
<b>NATIONAL VENDOR DECLARATIONS (NVD)</b>	<b>For the 2022 Sydney Royal Purebred Steer &amp; Carcase Competition, all Exhibitors will be required to submit version 0720 of the NVD to the RAS at the weighing and scanning on Wednesday 6 April 2022.</b> The PIC for Sydney Showground is <b>NJ464604</b> . For more information visit the MLA website: <a href="https://www.mla.com.au/news-and-events/industry-news/new-national-vendor-declarations-now-available/">https://www.mla.com.au/news-and-events/industry-news/new-national-vendor-declarations-now-available/</a>	

## SPECIAL REGULATIONS - PUREBRED STEER & CARCASE COMPETITION

The General Regulations apply to all Sections of the Show. These Special Regulations apply to the Purebred Steer & Carcase Section only. If there is inconsistency between the General Regulations and these Special Regulations for the Purebred Steer & Carcase Competition, the Special Regulations prevail.

Copies of all Regulations are available from the Administration Office.

The General Regulations are available at [www.rasnsn.com.au](http://www.rasnsn.com.au)

### DEFINITIONS

1. In these Special Purebred Steer & Carcase Regulations, but subject to context:

**Administration Office** means the office designated as such by the RAS for a Show.

**Chief Steward** means the Steward appointed by the RAS to act as Chief Steward in respect of any Class and includes the Steward-in-Chief and any assistant Stewards-in-Chief of the Cattle Section.

**Committee** means the Cattle Section Committee of the RAS.

**Cattle Coordinator** means the Person from time to time appointed by the RAS to that position.

**Ring** means the area in which any Class is being or is intended to be conducted.

**Veterinary Surgeon** means any veterinarian who is a member of the RAS' Veterinary Committee and includes any veterinarian who has been appointed or engaged by the RAS to provide veterinary services in connection with the Show.

### OWNERSHIP AND ELIGIBILITY

2. (a) Each steer must be owned by the Exhibitor.  
(b) Steers must be purebred.  
(c) Breed options for the Purebred Steer & Carcase Competition are the same as the breed options in the Beef Cattle Competition.  
(d) The sire and dam of the steer must be purebred and known to be of at least 15/16th purity.  
(e) Proof of the status of the sire will be required such as a registration number, and proof of the purity of the dam may be by a signed statutory declaration by the Owner to that effect.  
(f) The Committee may require any steer and its sire to be submitted for DNA testing, and will test at random any purebred steers sired by AI sires, to verify that the steer complies with the declaration of breed purity provided by the Exhibitor on the Application for Entry.

### RESTRICTION OF ENTRIES

3. The Committee reserves the right to limit entries.  
Should a ballot be required to reduce the number of entries then steers will be accepted in the following order:  
(a) A School steer with a registered beef cattle herd may also enter in the Open Section provided that the Exhibit is progeny bred in the Registered Herd.  
(b) Exhibitors who are Exhibiting elsewhere in the Beef Cattle Section of the Sydney Royal Easter Show and are the Owners of the registered Stud from whence the steer came.  
(c) Exhibitors who have only entered the Steer Carcase Competition and are Owners of the Stud from whence the steer came.  
(d) Exhibitors who are Exhibiting elsewhere in the Beef Cattle Section of the Sydney Royal Easter Show and are not the Owners of the registered Stud from whence the steer came.  
(e) Exhibitors who are neither Exhibiting elsewhere in the Beef Cattle Section of the Sydney Royal Easter Show nor are the Owners of the registered sire and dam of the steer being exhibited.

### COMPETITION ENTRY CONDITIONS

4. An Exhibit shall be deemed to be an entry in both Live and Carcase Classes.

### SCHOOL CLASS

5. All animals must be prepared by the School, no less than **2 months** prior to weighing and scanning. The RAS has the right to inspect any Schools at random.

### INSPECTIONS

6. (a) All Exhibits will be inspected for breed type, soundness and constitution.  
(b) All inspections will be carried out by Inspectors appointed by the Committee.  
(c) All Exhibits must be naturally poll, dehorned or tipped within 3cm of their head.  
(d) **All Exhibits that weigh and qualify for the Lightweight and Middleweight Classes, in both the School and Open Sections must not show any permanent, erupting or protruding teeth at the time of inspection. Exhibits that weigh and qualify for the Heavyweight Classes in both the School and Open Sections will be allowed both milk and two teeth at the time of inspection.**  
(e) National Vendor Declarations (NVD) and MSA Vendor Declarations must be provided at the time of weighing and scanning for each Exhibit.  
(f) **Any steers that do not meet the minimum live weight requirement of 350kg will be disqualified, and will not be eligible for auction, sale or processing at the abattoir.**  
(g) **An Exhibit that has been disqualified by the Inspectors will not be eligible for auction, sale or processing at the abattoir, and may be fined and/or removed from the ground at the discretion of the Committee.**  
(h) Bulls (entire males) and females will not be accepted for Exhibition.  
(i) All steers must have been castrated by the complete removal of testes.  
(j) A male cryptorchid or partial castrate will not be accepted for Exhibition, however, if a male cryptorchid or partial castrate is exhibited and slaughtered any extra slaughtering charges are to be borne by the Exhibitor. The Exhibit will be disqualified and the Exhibitor asked to show cause why he should not be deemed guilty of Unethical Conduct. (Refer to General Regulations).  
(k) Blood testing for testosterone may be undertaken at the discretion of the Chief Steward. Steers showing a positive level will be disqualified as will steers detected with abnormal remnants on slaughter.

### BEDDING

7. The RAS will provide the initial bedding put down prior to arrival of steers, and Exhibitors will be required to purchase any additional requirements.

### IDENTIFICATION OF CATTLE

8. Each Exhibit whilst parading before the Judge shall carry conspicuously as directed by the RAS a breastplate or other identification approved by the RAS corresponding with the number assigned to the Exhibit in respect of that Class in the Catalogue.

Each Exhibit must be NLIS tagged. Exhibitors are required to provide their Property Identification Code (PIC) on their Application for Entry. All Exhibits will be scanned at the Showground.

### WEIGHT CLASS ALLOCATION

9. The RAS will determine the entries in each Class resulting from the weighing of all Exhibits.

### NOSE RINGS, HALTERS, LEADS

10. All Cattle must be effectively trained to lead.  
All Cattle must be restrained in the following manner:  
(a) **When stalled:**  
Each animal will be securely tied up by an effective neck rope or collar and halter.  
(b) **At any other time:**  
All steers must at all times have a nose ring or Bulldog clip when being led.

**SCANNING AND OBJECTIVE MEASUREMENTS**

11. Each Exhibit will be mouthed, weighed and measured for fat depth and/or any other measurement deemed necessary by the RAS or such other assessors as the RAS may appoint.

In all steer Classes the Judge may be given any objective measurement information of the Exhibits at the discretion of the Chief Steward, including weights of Exhibits.

**MARSHALLING FOR CLASSES OR COMPETITIONS**

12. Any Exhibitor not present with their Exhibit at the Judging Ring at the time of the commencement of the Class or Competition, may not be admitted to the Judging Ring or permitted to compete in such Class or Competition, except at the discretion of the Chief Steward.

**STALLING AND TRANSPORTATION**

13. (a) An Exhibit must be stalled in the stall provided by the RAS by 8am on Wednesday 6 April 2022. An Exhibit not so stalled or removed from its stall without authority will be fined \$100 and will be disqualified from the Competition.
- (b) Each Exhibit will be sold and transported to the abattoir at the expense of the RAS. An Exhibit not presented for sale except for a reason satisfactory to the RAS must be removed from the Showground forthwith at the expense of the Exhibitor and all prize money and/or prize ribbons will be cancelled and a fine or other penalty may be imposed.

**CARCASE JUDGING**

14. The following rules will apply to the judging of Carcase Classes:
- (a) An animal of which the carcase is entered for Competition will be offered at Auction on the Showground under the auspices of the RAS and later will be slaughtered.
- (b) The carcase will be dressed and weighed and will then be Exhibited to the Judge in the presence of the Stewards of the Section, and if so desired by the Judge or any Steward, the carcase will be quartered and will be further cut up as may be required.
- (c) Care shall be taken by the Stewards that each carcase shall be capable of identification by the RAS, but shall not be identifiable by the Judge.

**JOHNE'S DISEASE**

15. Unrestricted entry, with all Exhibitors required to complete the **National Cattle Health Declaration (V: 16/04/20)** and submit with Application for Entry.

**EXHIBITOR PASSES**

16. Passes will be allocated as follows:

1 - 3 head	1 pass
4 - 7 head	2 passes
8 or more head	3 passes

This includes entries in both the School and Open Classes. For School Exhibitors, an extra pass will be allocated for one Teacher.

Schools may be issued with a maximum of 10 passes at the discretion of the Cattle Coordinator or Chairman.

**Any additional students and/or teachers will need to purchase Exhibition passes (Entry passes) to enable access onto the Showground.**

**PESTIVIRUS (BOVINE VIRAL DIARRHOEA VIRUS)**

17. Except where the RAS in its absolute and unfettered discretion may determine otherwise, no cattle in the Sydney Royal Purebred Steer & Carcase Competition may be exhibited unless tested for Pestivirus and certified as non PI (Persistently Infected) cattle. Certification of testing and proof of non PI status will be required with Application for Entry in the form of a signed Veterinary Certificate or Laboratory Report, listing animals and their identification. Testing results will be verified by the RAS.

**SCHOOL CONDUCT AND ATTIRE**

18. Except as otherwise so directed, an Attendant of an Exhibit, whilst parading such Exhibit before a Judge, shall wear a clean, approved dustcoat, an approved breed uniform or School uniform. Dustcoats must in no way show any insignia or any descriptive markings indicating the Exhibitor's name and/or stud name or prefix. Hats are optional for an Attendant of an Exhibit, whilst parading before a Judge, however caps are not permitted.

The same attire applies for Attendants of animals in the sale or auction ring.

An Attendant in the Grand Parade shall wear a dustcoat provided by the RAS which will be issued by the Breed Captains prior to entering GIANTS Stadium. All Attendants in the Grand Parade must wear a hat whilst in the GIANTS Stadium. Alternatively, Exhibitors may wear their approved Breed Uniform, however all Breeds are to have full matching attire and a hat.

The RAS will not tolerate any School/School Exhibitor found engaging in unethical conduct or unseemingly behaviour. (Refer General Regulations 113 - 116).

It is the School's responsibility to issue and have returned a student permission form to be signed by the Parent/Guardian regarding students participating and staying onsite during the 2022 Sydney Royal Easter Show.

A signed permission form does not automatically qualify a student to have accommodation onsite at the Showground.

All Schools are requested to wear their School identifying attire whilst on the Showground.

School representatives are responsible for the behaviour of all students at all times whilst on the Showground.

Students will be identified and School representatives and parents will be notified of any offences occurred on the Showground.

Any unethical conduct or unseemingly behaviour will be referred to the RAS Disciplinary Committee. Penalties will be issued at the discretion of the Disciplinary Committee and may include fines and/or eviction from the Showground.

**WITHDRAWALS**

19. (a) The RAS reserves the right to enforce withdrawals at their discretion if the number of entries exceeds capacity.
- (b) Provided that notification of withdrawal of an Exhibit in the Purebred Steer & Carcase Competition is received in writing by the RAS one week prior to the first day of Show, being **Friday 1 April 2022**, a fine will not be imposed. **Entry Fees are not refundable.**

Provided that notification of a withdrawal of an Exhibit in the Purebred Steer & Carcase Competition is caused by:

- the death of the Exhibit; or
- the Exhibit is unfit by way of injury or ill health; or
- any other reason satisfactory to the Cattle Committee;

then a fine will not be imposed.

A notification of withdrawal provided after **Friday 1 April 2022** will incur a fine of \$200. Withdrawals received at the time of Inspections on **Wednesday 6 April 2022** will incur a fine.

If the fine imposed has not been paid within 24 hours from when the fine was issued, the Exhibit may be disqualified or prize money will be withheld.

**DIVIDERS**

20. Use of dividers will not be permitted.

**PROHIBITED IN PAVILIONS AND ON GROUNDS**

21. Scooters, skateboards and bikes are not permitted on the Showground or in the Pavilions.

**HORMONES**

22. Animals which have been treated with hormones are not eligible for entry or Exhibition.

**NOTIFIABLE DISEASES**

23. Any animal/s infected with Notifiable Disease/s, and ringworm, can be disqualified and may be removed from grounds at the discretion of the RAS Committee and Veterinary Surgeon.

#### **RIBBONS AND AWARDS**

24. (a) Purchasers of Exhibits from the Purebred Steer & Carcase Competition will receive a duplicate of any ribbon awarded in the live Classes 1 - 14.
- (b) For the carcase Classes 1A - 14A place getters (1st, 2nd and 3rd) will receive ribbons, with both Exhibitors and Purchasers receiving place ribbons.
- (c) For the Carcase Classes 1A - 14A, for any Gold, Silver or Bronze Sydney Royal Medals awarded, Purchasers will receive satin ribbons.  
Exhibitors will receive a medallion for a Gold Sydney Royal Medal, and satin ribbons for a Silver or Bronze Sydney Royal Medal.

#### **MEDAL ARTWORK**

25. Exhibitors and Purchasers of Exhibits awarded Sydney Royal Medals will receive access to the Sydney Royal Medal Artwork. Use of Medal Artwork is subject to Sydney Royal Medal Artwork Terms & Conditions.

#### **USE OF BLOWERS**

26. Blowers are not permitted to be used before 4.30am each day, and failure to comply may result in a fine of \$250 and disqualification from the Competition.

#### **EXHIBITOR RESPONSIBILITY**

27. All Exhibitors are responsible for the conduct and actions of their fitters, agents or any persons associated with the preparation and exhibition of their Exhibits, including adherence to the Special Regulations and General Regulations.

If an Exhibitor is found to be in breach of a Special Regulation and/or General Regulation as a result of the actions or conduct of their fitter, agent or any persons associated with the preparation and exhibition of their Exhibits, the Exhibitor is subject to any penalties as deemed by the RAS.

#### **PERPETUAL TROPHIES**

28. Perpetual Trophies remain the property of the Royal Agricultural Society of NSW. Ownership of the Trophy does not pass to the winning Exhibitor. A medallion will be presented to the annual winner whose name will be engraved on the Trophy.



### CARCASE JUDGING METHOD

Carcases will be judged using the Australian Beef Carcase Appraisal Method (ABCAM 4.3), awarding points for meeting market specifications (20 points), yield of saleable meat (40 points) and eating quality (40 points).

Carcases will be judged as to their suitability for the domestic and export trade in high quality carcasses and primal cuts. Carcasses will be judged against the fat specifications.

**Weight penalty points will be applied to carcasses dressing under 180kg (at a rate of one carcase point per kg under 180kg) as these are considered to have limited market suitability.**

**Weight penalty points will be applied to carcasses dressing over 400kg (at the rate of one carcase point per kg over 400kg) as these are considered to have limited market suitability.**

#### MAXIMUM CARCASE POINTS:

1. Market Specification	20 points
P8 Fat Depth	10
Fat Colour	5
Meat Colour	5
2. Saleable Meat Yield	40 points
Muscle Score	10
Eye Muscle Area	15
Rib Fat Depth	15
3. MSA Eating Quality	40 points
Ultimate meat pH	10
Weight for Maturity (Ossification)	10
Hump Height	5
AUS-MEAT Marbling	5
Fat Distribution	10
<b>Total 100 points</b>	

#### OPTIMUM CLASS SPECIFIC CARCASE SPECIFICATIONS:

Lightweight Carcase	Middleweight Carcase	Heavyweight Carcase
Domestic carcase	Heavy domestic / supermarket carcase	Export trade carcase
<b>Optimum Weight</b> 180 - 240kg (penalties apply under 180kg)	<b>Optimum Weight</b> 241 - 310kg	<b>Optimum Weight</b> 311 - 440kg (penalties apply over 440kg)
<b>Fat Depth</b> 6 - 10 mm at the P8 (rump) site and 4 - 7 mm at the 12 <sup>th</sup> /13 <sup>th</sup> rib	<b>Fat Depth</b> 8 - 13 mm at the P8 (rump) site and 5 - 9 mm at the 12 <sup>th</sup> /13 <sup>th</sup> rib	<b>Fat Depth</b> 9 - 15 mm at the P8 (rump) site and 6 - 10 mm at the 12 <sup>th</sup> /13 <sup>th</sup> rib

### MEDAL SYSTEM

The Sydney Royal Medal System is utilised in the Carcase section of the Sydney Royal Purebred Steer & Carcase Competition to better recognise those carcasses that meet the appropriate score levels to qualify for a Bronze, Silver or Gold medal.

The following points system is applied in the Sydney Royal Medal System for the Sydney Royal Purebred Steer & Carcase Competition.

Medal	Points (/100)	Market Specifications (/15)	Saleable Meat Yield (/40)	Eating Quality (/45)
Gold	≥ 90	≥ 20	≥ 37	≥ 32
Silver	≥ 82	≥ 19	≥ 34	≥ 30
Bronze	≥ 74	≥ 18	≥ 31	≥ 27

### VIRTUAL TASTE TEST COMPETITION

The winner will be awarded to the carcasses with the highest Meat Standards Australia (MSA) Index. The MSA Index is a number between 30 to 80, calculated from the carcase's grading assessments. It is a standard National measure to represent the eating quality potential of the whole carcase.

To receive a Virtual Taste Test Score, carcasses need to have a pH of less than 5.70 and a minimum rib fat depth of 3mm.

A first place ribbon will be awarded to the Virtual Taste Test winner for each Carcase Class, 1A-14A.

A Champion Virtual Taste Test ribbon will also be awarded.

## SCHOOL STEER & CARCASE CHAMPIONSHIP

### PRIZE MONEY PER CLASS

#### Steer Classes

Prizes 1st \$100, 2nd \$50, 3rd \$35

#### Carcase Classes

Prizes 1st \$150, 2nd \$100, 3rd \$70

Prize money in the Carcase Classes will be paid out based on the highest scoring carcasses.

**CLASS 1** - Lightweight School Steer 350 - 440kg.

**CLASS 1A** - Lightweight School Carcase from Class 1.

**CLASS 2** - Middleweight School Steer 441 - 550kg.

**CLASS 2A** - Middleweight School Carcase from Class 2.

**CLASS 3** - Heavyweight School Steer 551kg and over.

**CLASS 3A** - Heavyweight School Carcase from Class 3.

Ribbons for the Virtual Taste Test winners from Classes 1A, 2A and 3A.

#### (S900) – CHAMPION SCHOOL STEER

Each first prize winner in Classes 1, 2 and 3 will be eligible to compete. Prize \$750

**(S900A) – The Andrew Lederer Memorial Perpetual Trophy, for the Champion School Steer, donated by the Lederer Family.**

**(S902) – ASC/RAS Perpetual Shield, for the School entering the Champion School Steer.**

**(S903) – ASC Plaque, presented to the Handler of the Champion School Steer.**

#### (S904) – RESERVE CHAMPION SCHOOL STEER

Each first prize winner in Classes 1, 2, and 3 will be eligible to compete. The Steer awarded 2nd prize in the Class in which the Champion won 1st prize will also be eligible to compete. Prize \$250

#### (S905) – CHAMPION SCHOOL CARCASE

Each first prize winner in Classes 1A, 2A and 3A will be eligible to compete. Prize \$750

**(S905A) – The RAS/NSW Farmers Perpetual Shield for the Champion School Carcase.**

#### (S906) – RESERVE CHAMPION SCHOOL CARCASE

Each first prize winner in Classes 1A, 2A and 3A will be eligible to compete. The Carcase awarded 2nd prize in the Class in which the Champion won 1st prize will also be eligible to compete. Prize \$250

## OPEN STEER & CARCASE CHAMPIONSHIP

### PRIZE MONEY PER CLASS

#### Steer Classes

Prizes 1st \$100, 2nd \$50, 3rd \$35

#### Carcase Classes

Prizes 1st \$150, 2nd \$100, 3rd \$70

Prize money in the Carcase Classes will be paid out based on the highest scoring carcasses.

## LIGHTWEIGHT SECTION

Yearling weighing 350kg and not more than 440kg liveweight, suitable for the domestic market.

**CLASS 4** – Lightweight Steer.

**CLASS 4A** – Lightweight Carcase from Class 4.

**CLASS 5** – Lightweight Steer.

**CLASS 5A** – Lightweight Carcase from Class 5.

**CLASS 6** – Lightweight Steer.

**CLASS 6A** – Lightweight Carcase from Class 6.

Ribbons for the Virtual Taste Test winners from Classes 4A, 5A and 6A.

#### (S910) – CHAMPION LIGHTWEIGHT STEER

Each first prize winner in Classes 4, 5 and 6 will be eligible to compete. Prize \$750

#### (S911) – RESERVE CHAMPION LIGHTWEIGHT STEER

Each first prize winner in Classes 4, 5 and 6 will be eligible to compete. The Steer Awarded 2nd prize in the Class in which the Champion won 1st prize will also be eligible to compete. Prize \$250

#### (S912) – CHAMPION LIGHTWEIGHT CARCASE

Each first prize winner in Classes 4A, 5A and 6A will be eligible to compete. Prize \$750

**(S912A) – The Sydney Futures Exchange Perpetual Prize, being interest derived from capital lodged with the RAS, by The Sydney Futures Exchange Limited, to enable this Prize to be competed for in perpetuity.**

The Prize to be awarded to the Champion Lightweight Carcase. A medallion will be presented each year to the winning Exhibitor.

#### (S914) – PURCHASER OF THE CHAMPION LIGHTWEIGHT CARCASE

**(S914A) – The R N Playfair Perpetual Trophy, presented by the RAS, to the purchaser of the Champion Lightweight Carcase.**

#### (S915) – RESERVE CHAMPION LIGHTWEIGHT CARCASE

Each first prize winner in Classes 4A, 5A and 6A will be eligible to compete. The Carcase awarded 2nd prize in the Class in which the Champion won 1st prize will also be eligible to compete. Prize \$250

## MIDDLEWEIGHT SECTION

Yearling weighing 441kg and up to 550kg liveweight, suitable for the heavy supermarket/restaurant trade.

**CLASS 7** – Middleweight Steer.

**CLASS 7A** – Middleweight Carcase from Class 7.

*Additional prize money supported by Woolworths.  
1st \$500, 2nd \$400, 3rd \$300, 4th \$200*

**CLASS 8** – Middleweight Steer

**CLASS 8A** – Middleweight Carcase from Class 8.

*Additional prize money supported by Woolworths.  
1st \$500, 2nd \$400, 3rd \$300, 4th \$200*

**CLASS 9** – Middleweight Steer.

**CLASS 9A** – Middleweight Carcase from Class 9.

*Additional prize money supported by Woolworths.  
1st \$500, 2nd \$400, 3rd \$300, 4th \$200*

**CLASS 10** – Middleweight Steer.

**CLASS 10A** – Middleweight Carcase from Class 10.

*Additional prize money supported by Woolworths.  
1st \$500, 2nd \$400, 3rd \$300, 4th \$200*

Ribbons for the Virtual Taste Test winners from Classes 7A, 8A, 9A and 10A.

### (S916) – CHAMPION MIDDLEWEIGHT STEER

Each first prize winner in Classes 7, 8, 9 and 10 will be eligible to compete. Prize \$750

### (S917) – RESERVE CHAMPION MIDDLEWEIGHT STEER

Each first prize winner in Classes 7, 8, 9 and 10 will be eligible to compete. The Steer Awarded 2nd prize in the Class in which the Champion won 1st prize will also be eligible to compete. Prize \$250

### (S918) – CHAMPION MIDDLEWEIGHT CARCASE

Each first prize winner in Classes 7A, 8A, 9A and 10A will be eligible to compete. Prize \$750

### (S919) – RESERVE CHAMPION MIDDLEWEIGHT CARCASE

Each first prize winner in Classes 7A, 8A, 9A and 10A will be eligible to compete. The Carcase awarded 2nd prize in the Class in which the Champion won 1st prize will also be eligible to compete.

Prize \$250

## HEAVYWEIGHT SECTION

Yearling weighing 551kg and over, liveweight, suitable for the Export Trade

**CLASS 11** - Heavyweight Steer.

**CLASS 11A** - Heavyweight Carcase from Class 11.

**CLASS 12** - Heavyweight Steer.

**CLASS 12A** - Heavyweight Carcase from Class 12.

**CLASS 13** - Heavyweight Steer.

**CLASS 13A** - Heavyweight Carcase from Class 13.

**CLASS 14** - Heavyweight Steer.

**CLASS 14A** - Heavyweight Carcase from Class 14.

Ribbons for the Virtual Taste Test winners from Classes 11A, 12A, 13A and 14A.

### (S920) - CHAMPION HEAVYWEIGHT STEER

Each first prize winner in Classes 11, 12, 13 and 14 will be eligible to compete. Prize \$750

**(S920A) - The Australia-Japan Friendship Perennial Trophy, for the Champion Heavyweight Steer, donated by Kubota Australia and the Consulate General of Japan, Sydney.**

Awarded for the first time in 2007. For many years, Japan has represented Australia's largest market for the export of heavyweight steers; the creation of this trophy acknowledges the significance of the trade relationship shared by these two countries and promotes ongoing friendship between them.

### (S921) - RESERVE CHAMPION HEAVYWEIGHT STEER

Each first prize winner in Classes 11, 12, 13 and 14 will be eligible to compete. The Steer awarded 2nd prize in the Class in which the Champion won 1st prize will also be eligible to compete. Prize \$250

### (S923) - CHAMPION HEAVYWEIGHT CARCASE

Each first prize winner in Classes 11A, 12A, 13A and 14A will be eligible to compete. Prize \$750

### (S924) - PURCHASER OF THE CHAMPION HEAVYWEIGHT CARCASE

**(S924A) - The E S Playfair Memorial Perpetual Trophy, presented by the RAS, to the purchaser of the Champion Heavyweight Carcase.**

### (S925) - RESERVE CHAMPION HEAVYWEIGHT CARCASE

Each first prize winner in Classes 11A, 12A, 13A and 14A will be eligible to compete. The Carcase awarded 2nd prize in the Class in which the Champion won 1st prize will also be eligible to compete. Prize \$250

### (S926) - GRAND CHAMPION STEER

The Champion Steers from the School, Open Lightweight, Middleweight and Heavyweight Sections must parade for this prize.

**(S926A) - The Coghlan Pure Bred Steer Perpetual Trophy, for the Exhibitor of the Grand Champion Pure Bred Steer, donated by Mr & Mrs Bill Coghlan.**

*(S926B) - Prize Voucher supported by Limitless Show Supplies.  
Prize \$80*

### (S927) - GRAND CHAMPION CARCASE

The Champion Carcases from the School, Open Lightweight, Middleweight and Heavyweight Sections will compete for this prize.

**(S927A) - The Coghlan Pure Bred Carcase Perpetual Trophy, for the Exhibitor of the Grand Champion Pure Bred Carcase, donated by Mr & Mrs Bill Coghlan.**

### (S930) - CHAMPION VIRTUAL TASTE

Each first prize winner in Carcase Classes 1A to 14A will compete for this prize.

## MOST SUCCESSFUL SCHOOL EXHIBITOR IN STEER CLASSES

**(S907) - The Eve Cullen Memorial Perpetual Trophy, for the Most Successful School Exhibitor in the Steer Classes, donated by Hugh and Brigid Robertson.**

To be awarded to the School obtaining the highest number of points in the Purebred Steer Classes 1 - 14.

Points will be awarded for the five highest Awards in each Single Class only; points shall be allocated on the basis of 5, 4, 3, 2, 1. Should there be fewer than 5 Awards in any one Single Class, the points shall be on the said basis in order of merit. (eg. If only 3 Entries in a Class, points will be allocated 5, 4, 3).

In addition there shall be:

- 3 points for Champion
- 2 points for Reserve Champion
- 2 points for Grand Champion

**(S907A) - The Eve Cullen Memorial Perpetual Prize, for the Most Successful School Exhibitor in the Steer Classes. Prize money will be awarded, being interest derived from capital lodged with the RAS by Hugh and Brigid Robertson, to enable this prize to be competed for in perpetuity. Prize \$1000.**

## INTERBREED GROUP OF THREE STEERS

**(S932) - The Stan Hill Memorial Perpetual Trophy, for the Interbreed Group of Three Purebred Steers. Donated by Friends of the late Stan Hill, former Chairman of the Metropolitan Meat Industry Board.**

### CLASS 16 - INTERBREED GROUP OF THREE STEERS

No Entry Fee is required from the Exhibitor.

Prizes 1st ribbons and Medallions for each Exhibitor, 2nd ribbons, 3rd ribbons.

The conditions of the Competition are as follows:

1. The Competition to be between breed teams of three steers entered in Classes 1A to 14A in the Purebred Steer & Carcase Competition.
2. Teams will be judged as carcasses only.
3. Entries must be submitted to the Administration Office by **7pm Thursday 7 April 2022.**
4. The Judge should note that steers may come from any of the Classes, and therefore evenness of the weights within the team should NOT be taken into account. Individual carcase points are scored out of 100, with a team maximum total of 300 points.
5. The winner of the Competition will be the team gaining the highest number of points in the carcase section.

## CARCASE GROUP CLASSES

No Entry Fee is required from the Exhibitor.

Entry to these classes is not required at time of entry and Exhibitors are not required to nominate for these classes.

Any Exhibitor who meets the requirements and regulations, will automatically be eligible for these classes and entered.

### CLASS 17 - SCHOOL CARCASE GROUP

Group of three School Carcases from Classes 1A to 14A.

Exhibited by a School only. Animals owned or Exhibited in partnership are not eligible for the School Carcase Group.

All animals to be prepared by the School, no less than two months prior to weighing and scanning.

### CLASS 18 - BREEDERS CARCASE GROUP

Group of three Carcases from Classes 1A to 14A.

All animals to be bred by the one breeder and Exhibited by the one Exhibitor (Breeder and Exhibitor not necessarily the same entity/name).

## HERDSMAN'S BEST MAINTAINED TEAM COMPETITION

This Competition is defined as follows:

- (a) The winner will be the best displayed and maintained team.
- (b) The overall prize winners will receive first, second and third prize ribbons.

The points will be allocated in the following manner:

	Points
(a) Groomed appearance of the cattle	20
(b) Tidiness, condition and cleanliness of bedding	30
(c) Overall presentation, promotion, knowledge and public relations	40
(d) Handling of animals	10
<b>TOTAL</b>	<b>100</b>

Judging will take place in the Cattle Pavilions from the morning of **Friday 8 April and finish at 7pm Saturday 8 April 2022.**

*Prize Voucher for the Overall Winner supported by Limitless Show Supplies. Prize 1st \$50*

## PUREBRED STEER & CARCASE - SPECIAL PRIZES

*The following prizes to winning Steer and Carcase Exhibits are supported by the Breed Societies.*

*The encouragement this gives to the breeders and the support it gives to the Competition is gratefully acknowledged.*

### Angus NSW

\$300	Cash Prize awarded to the Angus Exhibit winning Grand Champion Steer
\$300	Cash Prize awarded to the Angus Exhibit winning Grand Champion Carcase
\$200	Cash Prize awarded to the Angus Exhibit winning Champion School Steer
\$200	Cash Prize awarded to the Angus Exhibit winning Champion School Carcase
\$100	Cash Prize awarded to the Angus Exhibit winning Reserve Champion School Steer
\$100	Cash Prize awarded to the Angus Exhibit winning Reserve Champion School Carcase
\$1500	Cash Prize of \$500 awarded to each Angus Exhibit in the winning Stan Hill Team
\$600	The Noel Williams Shield (Cash Prize) supported by Reiland Angus Stud, awarded to the highest scoring Angus Carcase in the Schools Section
\$1000	Cash Prize of \$200 awarded to the five highest scoring Angus Carcase Exhibits scoring 85 points or more

### Australian Belted Galloway Association

*Animals entered must be the progeny of a parent that is registered with the Australian Belted Galloway Association Inc*

\$55	Cash Prize awarded to the highest scoring Purebred Belted Galloway Carcase
\$150	Cash Prize awarded to any Purebred Belted Galloway Carcase Exhibit scoring 85 points or more
\$500	Cash Prize awarded to the Purebred Belted Galloway Exhibit winning Grand Champion Steer
\$500	Cash Prize awarded to the Purebred Belted Galloway Exhibit winning Grand Champion Carcase

### NSW Charolais

\$750	Cash Prize of \$250 awarded to each Charolais Exhibit in the winning Stan Hill Team
\$1000	Cash Prize awarded to the highest scoring Charolais Carcase

### Devon Cattle Breeders' Society of Australia Ltd

\$100	Cash Prize awarded to the Devon Exhibit winning Champion Lightweight, Middleweight or Heavyweight Steer
\$100	Cash Prize awarded to the Devon Exhibit winning Champion Lightweight, Middleweight or Heavyweight Carcase

### Herefords Australia Ltd

\$1000	Cash Prize awarded to the Hereford Exhibit winning Champion Lightweight, Middleweight or Heavyweight Steer
\$1000	Cash Prize awarded to the Hereford Exhibit winning Champion Lightweight, Middleweight or Heavyweight Carcase
\$200	Cash Prize awarded to any Hereford Carcase Exhibit scoring 82 points or more

### Murray Grey Beef Cattle Society

*All Exhibits must be by a registered Murray Grey Sire*

\$50	Cash Prize awarded to the Murray Grey Exhibit winning 1st Place in a Steer Class (excluding Group Classes)
\$50	Cash Prize awarded to the Murray Grey Exhibit winning 1st Place in a Carcase Class (excluding Group Classes)
\$30	Cash Prize awarded to the Murray Grey Exhibit winning 2nd Place in a Steer Class (excluding Group Classes)
\$30	Cash Prize awarded to the Murray Grey Exhibit winning 2nd Place in a Carcase Class (excluding Group Classes)
\$20	Cash Prize awarded to the Murray Grey Exhibit winning 3rd Place in a Steer Class (excluding Group Classes)
\$20	Cash Prize awarded to the Murray Grey Exhibit winning 3rd Place in a Carcase Class (excluding Group Classes)
\$250	Cash Prize awarded to the Murray Grey Exhibit winning Champion School Steer
\$250	Cash Prize awarded to the Murray Grey Exhibit winning Champion Lightweight, Middleweight or Heavyweight Steer
\$250	Cash Prize awarded to the Murray Grey Exhibit winning Champion School Carcase
\$250	Cash Prize awarded to the Murray Grey Exhibit winning Champion Lightweight, Middleweight or Heavyweight Carcase
\$1000	Cash Prize awarded to the Murray Grey Exhibit winning Grand Champion Steer
\$1000	Cash Prize awarded to the Murray Grey Exhibit winning Grand Champion Carcase
\$300	Cash Prize of \$100 awarded to each Murray Grey Exhibit in the winning Stan Hill Team
\$250	Cash Prize awarded to the highest scoring Murray Grey Carcase

### Simmental NSW

*Must be sired by a registered Purebred Simmental Bull*

\$20,000	Cash Prize awarded to the Simmental Exhibit winning Grand Champion Steer
\$20,000	Cash Prize awarded to the Simmental Exhibit winning Grand Champion Carcase
\$20,000	Cash Prize awarded to the Simmental Exhibit winning Champion School Steer
\$20,000	Cash Prize awarded to the Simmental Exhibit winning Champion School Carcase

**Make sure it is complete and correct, so you can stand by what you sell.**

## Who is responsible for completing the LPA NVD?

**Part A:** The cattle owner or the person responsible for the husbandry of the cattle.

**Part B:** The livestock carrier.

## Who keeps the copies?

**Top sheet:** (White) goes with the cattle to the purchaser.

**Middle sheet:** (Green) goes to the carrier.

**Bottom sheet:** (Pink) stays in the book and should be kept for auditing purposes.

## How do I order copies of the LPA NVD?

- 1 Go to [www.integritysystems.com.au/nvd](http://www.integritysystems.com.au/nvd) or
- 2 Phone 1800 683 111

## Where do I go for more information?

Go to [www.integritysystems.com.au/lpa](http://www.integritysystems.com.au/lpa)

**Do not amend the pre-printed PIC.**  
This NVD can ONLY be used for cattle located on this PIC.

Complete all details about the livestock.  
Use a separate line for each different group, split by breed and sex.

Contact receiver, agent or saleyards to find out correct destination PIC.  
The consignee can be different to the destination.  
When selling at a saleyards the consignee will be the agent and the destination (and PIC) will be the saleyards.

**Only tick Yes or No in questions 1 to 8.**  
Do not tick both.

If some of the consignment require you to tick Yes then this applies to the entire consignment.

NATIONAL VENDOR DECLARATION (CATTLE) AND WAYBILL			
C0720		3888888888	
This form cannot be used where eligibility for the EU market is required.			
<b>Part A</b> To be completed by the owner or person who is responsible for the husbandry of the cattle.			
Owner of cattle <u>David Grazier</u>		<u>Wintergreen Pastoral Co.</u>	
Property/place where the journey commenced <u>Wintergreen RMB 123</u>		<u>Warren</u> <u>NSW</u>	
Coonamble Rd		Warren	
Property Identification Code (PIC) of this property		NA123456	
Description of cattle			
Number	Description (BREED, SEX, E.G. HEREFORD CROSS STEERS)	Brands or Earmarks (IF PRESENT OR REQUIRED)	
12	Angus Steers		
5	Hereford Heifers		
1, 7, Total			
Consigned to <u>John Burrows, Burrows Livestock Agency</u>			
12 Main St			
Destination (if different) of cattle <u>Warren Saleyards</u> <u>50 Saleyards Rd, Warren, NSW</u>			
Destination PIC (REQ: WA & TAS) <u>N, A, 2, 3, 4, 5, 6, 7</u>			
NLIS devices used on these cattle Number of ear tags <u>1, 7</u> Number of rumen devices			
Details of other statutory documents relating to this movement e.g. health statement			
1 Have any of the cattle in this consignment ever in their lives been treated with a hormonal growth promotant (HGP)? (Use a second document for mixed consignments.) Yes <input type="checkbox"/> No <input checked="" type="checkbox"/>			
2 Have the cattle in this consignment ever in their lives been fed feed containing animal fats? Yes <input type="checkbox"/> No <input checked="" type="checkbox"/> (See Explanatory Notes)			
3 Has the owner stated above owned these cattle since their birth? Yes <input type="checkbox"/> No <input checked="" type="checkbox"/> If No, how long were the cattle obtained or purchased? (If purchased at different times, tick the box <input type="checkbox"/> to the time of the most recent purchase.) A. less than 2 months <input type="checkbox"/> B. 2-6 months <input type="checkbox"/> C. 6-12 months <input type="checkbox"/> D. more than 12 months <input checked="" type="checkbox"/>			
4 In the past 60 days, have any of these cattle been fed by-product stockfeeds? Yes <input type="checkbox"/> No <input checked="" type="checkbox"/> If Yes, attach a list of the by-product stockfeeds, date when last fed and a copy of an analyst's report if available.			
5 In the past 6 months have any of these animals been on a property listed on the ERP database or placed under any restrictions because of chemical residues? Yes <input type="checkbox"/> No <input checked="" type="checkbox"/> If Yes, give details:			
6 Are any of the cattle in this consignment still within a Withholding Period (WHP) or Export Slaughter Interval (ESI) as set by APVMA or SAFE MEAT, following treatment with any veterinary drug or chemical? Yes <input checked="" type="checkbox"/> No <input type="checkbox"/> If Yes, give details: (Record additional details in question 9) <u>Demize Pouron</u> <u>29 / 4 / 2020</u> <u>1, 4</u> <u>ESI (IF SET)</u>			
7 In the past 60 days, have any of the cattle in this consignment consumed any material that was still within a withholding period when harvested, collected or first grazed? Yes <input checked="" type="checkbox"/> No <input type="checkbox"/> If Yes, give details: <u>Hotshot Herbicide</u> <u>25 / 3 / 2020</u> <u>7</u> <u>30 / 3 / 2020</u> <u>15 / 4 / 2020</u>			
8 In the past 42 days, were any of these cattle a) grazed in a spray risk area; or b) fed fodders cut from a spray drift risk area? (See Explanatory Notes for definition of spray drift risk area.) Yes <input type="checkbox"/> No <input checked="" type="checkbox"/> If Yes, Date sprayed: <u>1 / 20</u>			
9 Please include any additional information below eg: vaccination programs, animal health certification, additional declarations, etc. <u>Cattle health declaration (attached), vaccinated with 5 in 1 (2 doses) as weaners</u>			
Declaration I <u>David Grazier</u> <u>Wintergreen RMB 123</u> FULL NAME FULL ADDRESS <u>Coonamble Rd Warren NSW</u> ADDRESS CONT			
declare that, I am the owner or the person responsible for the husbandry of the cattle and that all the information in part A of this document is true and correct. I also declare that I have read and understood all the questions that I have answered, that I have read and understood the explanatory notes, and that, while under my control, the cattle were not fed restricted animal material (including meat and bone meal) in breach of State or Territory legislation.			
Signature* <u>David Grazier</u> Date* <u>4 / 5 / 2020</u> *Only the person whose name appears above may sign this declaration, or make amendments which must be initialed.			
Tel no. <u>02 9463 9000</u> Fax no. <u>02 9463 9111</u> Email <u>dgrazier@email.com.au</u>			
Part B To be completed by the person in charge of the cattle while they are being moved. Completion of this part is optional in SA and VIC.			
Movement commenced: <u>1 / 20</u> <u>10</u> (am/pm)			
Vehicle registration number(s):			
I <u>David Grazier</u> am the person in charge of the cattle during the movement and declare all the information in Part B is true and correct.			
Signature Date <u>4 / 5 / 2020</u> Tel no.			
*When more than one truck is carrying the cattle, other vehicle registration numbers are to be recorded.			

If your PIC has had an Extended Residue Program (ERP) status (e.g. EW, OC or CT) in the past 6 months, tick Yes.

Do not send cattle to slaughter if they are still within **Withholding Periods (WHP)** or **Export Slaughter Intervals (ESI)**.

Information about ESI and WHP for all livestock species can be found at [www.apvma.gov.au/ESI](http://www.apvma.gov.au/ESI)

Make sure you read and understand what you are signing, including that cattle must not have been fed **Restricted Animal Material (RAM)**.

An unsigned LPA NVD is invalid.

The carrier should fill in Part B.



# 2022 TRADE HOOF & CARCASE COMPETITION

<b>CLOSING DAY OF ENTRY</b>	WEDNESDAY 16 FEBRUARY 2022	
<b>ENTRY RESTRICTIONS</b>	Steers & Heifers are eligible.	
<b>ENTRY FEES</b> <i>All Entry Fees are GST inclusive and non-refundable.</i> Entry Fees include bedding.	<b>RAS MEMBERS</b> \$113 per Entry	<b>NON MEMBERS</b> \$150 per Entry
<b>LATE ENTRIES</b>	<b>CLOSING DATE:</b> FRIDAY 25 MARCH 2022 \$300 (incl. GST) per single Class entry A Late Entry may be made by an Exhibitor provided that the Exhibitor has an entry in their name or partnership's name. A Late Entry will only be available pending entry numbers on Wednesday 9 March 2022, and may be permitted at the discretion of the Cattle Committee.	
<b>MSA REGISTRATION</b>	All Exhibitors in the Trade Hoof & Carcase Competition are required to be MSA registered. MSA registration numbers will be verified with MLA. For more information go to: <a href="http://www.mla.com.au/msa">www.mla.com.au/msa</a> To register online go to: <a href="http://registerproducer.msagrading.com.au">http://registerproducer.msagrading.com.au</a>	
<b>ARRIVAL</b>	8am, Monday 4 April to 8am, Wednesday 6 April 2022. <b>All Cattle are to be on the Showground by 8am, Wednesday 6 April 2022.</b>	
<b>INSPECTIONS, WEIGHING &amp; SCANNING</b>	Inspections, weighing and scanning will take place on <b>Wednesday 6 April 2022</b> . All steers and heifers will be inspected in accordance with the <b>liveweight guideline 390 - 570kg</b> . The RAS will determine the entries in each Class resulting from the weighing of all Exhibits as follows: <b>Class 1 Liveweight guideline 390 - 480kg</b> <b>Class 2 Liveweight guideline 481 - 570kg</b> The RAS and Woolworths reserve the right to reject any steers or heifers that are out of specification or unsuitable to Woolworths specifications.	
<b>JUDGING</b> <i>Due to Health Regulations, Exhibitors will NOT be permitted into the Abattoir.</i>	<b>LIVE</b> Saturday 9 April 2022	<b>CARCASE</b> Tuesday 12 April 2022
<b>SALE OF STEERS &amp; HEIFERS</b>	All Exhibits meeting Woolworths specifications will be purchased by Woolworths over the grid.	
<b>DEPARTURE</b>	All steers will be loaded for transportation to the abattoir on Sunday 10 April 2022.	
<b>HEALTH DECLARATIONS</b>	Exhibitors MUST complete the <b>National Cattle Health Declaration (V: 16/04/20)</b> and submit the form along with Pestivirus results, with entries, to be received by the RAS Cattle Section by <b>Wednesday 16 February 2022</b> .	
<b>VENDOR DECLARATIONS, EXHIBIT CONFIRMATION ADVICE &amp; DASHBOARD SLIPS</b>	Exhibit Confirmation Advices (Benchslips) and Dashboard Slips will be forwarded to Exhibitors prior to steers arriving on the Showground. The Exhibit Confirmation Advice, together with the Dashboard Slip, will allow Exhibitors vehicle entry to the Showground. The Dashboard Slip will be issued to Exhibitors with the Showtime Authorised Contact Person's mobile number printed on the slip. Dashboard Slips must be displayed on the dashboard of the vehicle at all times while on the Showground. All Exhibitors must present an <b>EXHIBIT CONFIRMATION ADVICE</b> , a completed <b>NATIONAL VENDOR DECLARATION</b> and a <b>MSA VENDOR DECLARATION</b> from the same property of origin at the Inspections, Weighing and Scanning on Wednesday 6 April 2022. Failure to present these documents will result in the Exhibit not being processed for the Competition.	
<b>ACCOMMODATION</b>	Due to the evolving situation with respect to Covid-19, on-site accommodation arrangements may change. More information about on-site accommodation will be communicated with Exhibitors closer to the 2022 Show. <b>Onsite accommodation in the lofts will only be available to Exhibitors who have three (3) or more Exhibits, excluding calves at foot, at time of arrival/bump in.</b> Due to Fire regulations, <b>a maximum of 3 persons will be permitted per loft.</b> Sleeping downstairs in the tackroom/locker is not permitted under any circumstances. Please note: <ul style="list-style-type: none"> <li>• <b>Persons under the age of 18 years are NOT permitted to stay overnight on the Showground, unless accompanied by an adult.</b></li> <li>• <b>Lofts and tackrooms are not mutually exclusive and must be shared, in accordance with any Covid-19 restrictions and regulations, where multiple Exhibitors are stalled in a row.</b></li> </ul>	
<b>NATIONAL VENDOR DECLARATIONS (NVD)</b>	For the 2022 Sydney Royal Trade Hoof & Carcase Competition, all Exhibitors will be required to submit version 0720 of the NVD to the RAS at the weighing and scanning on Wednesday 6 April 2022. The PIC for Sydney Showground is <b>NJ464604</b> . For more information visit the MLA website: <a href="https://www.mla.com.au/news-and-events/industry-news/new-national-vendor-declarations-now-available/">https://www.mla.com.au/news-and-events/industry-news/new-national-vendor-declarations-now-available/</a>	

## SPECIAL REGULATIONS - TRADE HOOF & CARCASE COMPETITION

The General Regulations apply to all Sections of the Show. These Special Regulations apply to the Trade Hoof & Carcase Competition only. If there is inconsistency between the General Regulations and these Special Regulations for the Trade Hoof & Carcase Competition, the Special Regulations prevail.

Copies of all Regulations are available from the Administration Office.

The General Regulations are available at [www.rasnsr.com.au](http://www.rasnsr.com.au)

### DEFINITIONS

1. In these Special Trade Hoof & Carcase Regulations, but subject to context:

**Administration Office** means the office designated as such by the RAS for a Show.

**Chief Steward** means the Steward appointed by the RAS to act as Chief Steward in respect of any Class and includes the Steward-in-Chief and any assistant Stewards-in-Chief of the Cattle Section.

**Committee** means the Cattle Section Committee of the RAS.

**Cattle Coordinator** means the Person from time to time appointed by the RAS to that position.

**Notifiable Diseases** as required and defined by Federal and NSW State Law.

**Ring** means the area in which any Class is being or is intended to be conducted.

**Veterinary Surgeon** means any veterinarian who is a member of the RAS' Veterinary Committee and includes any veterinarian who has been appointed or engaged by the RAS to provide veterinary services in connection with the Show.

### OWNERSHIP AND ELIGIBILITY

2. (a) Each steer/heifer must be owned by the Exhibitor.  
(b) Steers/heifers may be purebred or crossbred.

### COMPETITION ENTRY CONDITIONS

3. An Exhibit shall be deemed to be an entry in both Live and Carcase Classes.

### RESTRICTION OF ENTRIES

4. The Committee reserves the right to limit entries.

### INSPECTIONS AND ELIGIBILITY

5. (a) All inspections will be carried out by Inspectors appointed by the Committee.  
(b) All Exhibits must be naturally poll, dehorned or tipped within 3cm of their head.  
(c) Exhibits will be allowed to show two permanent teeth at the time of inspection.  
(d) All inspections will be carried out by Inspectors appointed by the Committee.  
(e) An Exhibit that has been disqualified by the Inspectors may be fined and/or removed from the ground at the discretion of the Committee.  
(f) Bulls (entire males) will not be accepted for Exhibition.  
(g) All steers must have been castrated by the complete removal of testes.  
(h) A male cryptorchid or partial castrate will not be accepted for Exhibition, however, if a male cryptorchid or partial castrate is Exhibited and slaughtered any extra slaughtering charges are to be borne by the Exhibitor. The Exhibit will be disqualified and the Exhibitor asked to show cause why he should not be deemed guilty of Unethical Conduct. (Refer to General Regulations).  
(i) Blood testing for testosterone may be undertaken at the discretion of the Chief Steward. Steers showing a positive level will be disqualified as will steers detected with abnormal remnants on slaughter.

### BEDDING

6. The RAS will provide the initial bedding put down prior to arrival of steers and heifers, and Exhibitors will be required to purchase any additional requirements.

### IDENTIFICATION OF CATTLE

7. Each Exhibit whilst parading before the Judge shall carry conspicuously as directed by the RAS a breastplate or other identification approved by the RAS corresponding with the number assigned to the Exhibit in respect of that Class in the Catalogue.

Each Exhibit must be NLIS tagged. Exhibitors are required to provide their Property Identification Code (PIC) on their Application for Entry. All Exhibits will be scanned at the Showground.

### WEIGHT CLASS ALLOCATION

8. The RAS will determine the entries in each Class resulting from the weighing of all Exhibits.

### NOSE RINGS, HALTERS, LEADS

9. All Cattle must be effectively trained to lead.

All Cattle must be restrained in the following manner.

#### (a) When stalled:

Each animal will be securely tied up by an effective neck rope or collar and halter.

#### (b) At any other time:

All steers and heifers must at all times have a nose ring or Bulldog clip when being led.

### SCANNING AND OBJECTIVE MEASUREMENTS

10. Each Exhibit will be mouthed, weighed and measured for fat depth and/or any other measurement deemed necessary by the RAS or such other assessors as the RAS may appoint.

In all steer/heifer Classes the Judge may be given any objective measurement information of the Exhibits at the discretion of the Chief Steward including weights of Exhibits.

### MARSHALLING FOR CLASSES OR COMPETITIONS

11. Any Exhibitor not present with their Exhibit at the Judging Ring at the time of the commencement of the Class or Competition, may not be admitted to the Judging Ring or permitted to compete in such Class or Competition, except at the discretion of the Chief Steward.

### STALLING AND TRANSPORTATION

12. (a) An Exhibit must be stalled in the stall provided by the RAS by 8am on Wednesday 6 April 2022. An Exhibit not so stalled or removed from its stall without authority will be fined \$100 and will be disqualified from the Competition.  
(b) Each Exhibit will be sold and transported to the abattoir at the expense of the RAS of NSW. Woolworths will purchase all the cattle over a grid system. Prices will be available at live judging.

### SPECIFICATIONS

12. (a) The RAS and Woolworths reserve the right to reject any steers or heifers that are out of specification or unsuitable to Woolworths specifications. If the steer or heifer is outside of the specifications they will be ineligible to compete and will be disqualified.  
(b) An Exhibit that has been disqualified by the Inspectors will not be eligible for sale or processing at the abattoir, and may be fined and/or removed from the ground at the discretion of the Committee.

### CARCASE JUDGING

13. (a) The carcase will be dressed and weighed and will then be Exhibited to the Judge in the presence of the Stewards of the section, and if so desired by the Judge or any Steward, the carcase will be quartered and will be further cut up as may be required.  
(b) Care shall be taken by the Stewards that each carcase shall be capable of identification by the RAS, but shall not be identifiable by the Judge.

### JOHNE'S DISEASE

14. Unrestricted entry, with all Exhibitors required to complete the **National Cattle Health Declaration (V: 16/04/20)** and submit with Application for Entry.

**EXHIBITOR PASSES**

15. Passes will be allocated as follows:

1 - 3 head	1 pass
4 - 7 head	2 passes
8 or more head	3 passes

Schools may be issued with a maximum of 10 passes at the discretion of the Cattle Coordinator or Chairman.

**Any additional students and/or teachers will need to purchase Exhibition passes (Entry passes) to enable access onto the Showground.**

**PESTIVIRUS (BOVINE VIRAL DIARRHOEA VIRUS)**

16. Except where the RAS in its absolute and unfettered discretion may determine otherwise, no cattle in the Sydney Royal Trade Hoof & Carcase Competition may be Exhibited unless tested for Pestivirus and certified as non PI (Persistently Infected) cattle. Certification of testing and proof of non PI status will be required with Application for Entry in the form of a signed Veterinary Certificate or Laboratory Report, listing animals and their identification. Testing results will be verified by the RAS.

**SCHOOL CONDUCT AND ATTIRE**

17. The RAS will not tolerate any School/School Exhibitor found engaging in unethical conduct or unseemingly behaviour. (Refer General Regulations 113 - 116).

It is the School's responsibility to issue and have returned a student permission form to be signed by the Parent/Guardian regarding students participating and staying onsite during the 2022 Sydney Royal Easter Show.

A signed permission form does not automatically qualify a student to have accommodation onsite at the Showground.

All Schools are requested to wear their school identifying attire whilst on the Showground.

School representatives are responsible for the behaviour of all students at all time whilst on the Showground.

Students will be identified and School representatives and parents will be notified of any offences occurred on the Showground.

Any unethical conduct or unseemingly behaviour will be referred to the RAS Disciplinary Committee. Penalties will be issued at the discretion of the Disciplinary Committee and may include fines and/or eviction from the Showground.

**WITHDRAWALS**

18. (a) The RAS reserves the right to enforce withdrawals at their discretion if the number of entries exceeds capacity.

(b) Provided that notification of withdrawal of an Exhibit in the Trade Hoof & Carcase Competition is received in writing by the RAS one week prior to the first day of Show, being **Friday 1 April 2022**, a fine will not be imposed. **Entry Fees are not refundable.**

Provided that notification of a withdrawal of an Exhibit in the Trade Hoof & Carcase Competition is caused by:

- (i) the death of the Exhibit; or
- (ii) the Exhibit is unfit by way of injury or ill health; or
- (iii) any other reason satisfactory to the Cattle Committee;

then a fine will not be imposed.

A notification of withdrawal provided after **Friday 1 April 2022** will incur a fine of \$200. Withdrawals received at the time of Inspections on **Wednesday 6 April 2022** will incur a fine.

If the fine imposed has not been paid within 24 hours from when the fine was issued, the Exhibitor may be disqualified or prize money will be withheld.

**DIVIDERS**

19. Use of dividers will not be permitted.

**HORMONES**

20. Animals which have been treated with hormones are not eligible for entry or Exhibition.

**ACCEPTABLE ANIMALS**

21. The RAS and Woolworths reserve the right to reject any steers or heifers that are out of specification or unsuitable to Woolworths specifications.

**NOTIFIABLE DISEASES**

22. Any animal/s infected with Notifiable Disease/s, and ringworm, can be disqualified and may be removed from grounds at the discretion of the RAS Committee and Veterinary Surgeon.

**USE OF BLOWERS**

23. Blowers are not permitted to be used before 4.30am each day, and failure to comply may result in a fine of \$250 and disqualification from the Competition.

**EXHIBITOR RESPONSIBILITY**

24. All Exhibitors are responsible for the conduct and actions of their fitters, agents or any persons associated with the preparation and exhibition of their Exhibits, including adherence to the Special Regulations and General Regulations.

If an Exhibitor is found to be in breach of a Special Regulation and/or General Regulation as a result of the actions or conduct of their fitter, agent or any persons associated with the preparation and exhibition of their Exhibits, the Exhibitor is subject to any penalties as deemed by the RAS.

**PERPETUAL TROPHIES**

25. Perpetual Trophies remain the property of the Royal Agricultural Society of NSW. Ownership of the Trophy does not pass to the winning Exhibitor. A medallion will be presented to the annual winner whose name will be engraved on the Trophy.

**MEDAL ARTWORK**

26. Exhibitors and Purchasers of Exhibits awarded Sydney Royal Medals will receive access to the Sydney Royal Medal Artwork. Use of Medal Artwork is subject to Sydney Royal Medal Artwork Terms & Conditions.

**CARCASE JUDGING METHOD****Carcase Judging**

Carcases will be judged using an objective method developed specifically for this section, utilising both VIAscan and Meat Standards Australia technology.

Points will be awarded for:

- Meeting Woolworths Specifications - 40 points
- Yield of Saleable Meat - 30 points
- Eating Quality - 30 points

**Woolworths Specifications**

Carcases will receive higher scores if they are within the optimum range of specifications, including carcase weight.

**CARCASE POINTS:**

1. Woolworths Specifications	40 points
HSCW	10
P8 Fat Depth	10
Meat Colour	5
Fat distribution	15
2. Saleable Meat Yield	30 points
Eye Muscle Area	10
Rib Fat Depth	10
Calculated Yield	10
3. Eating Quality	30 points
(To receive Eating Quality points, carcasses must have a minimum 3mm rib fat and pH of 5.7 or lower.)	
Weighted MSA Index	30
<b>Total 100 points</b>	

**OPTIMUM CLASS SPECIFIC CARCASE SPECIFICATIONS:**

Specification	Class 1 Liveweight 390 - 480kg	Class 2 Liveweight 481 - 570kg
Dentition	0 - 2 permanent teeth	
HSCW	210 - 320kg <b>Optimum 240 - 300kg</b>	
Marbling	Aus-Meat Chip 0 - 3	
Meat pH	5.3 - 5.7	
P8 fat depth	5 - 18mm <b>Optimum 9 - 13mm</b>	
Rib fat depth	3 - 10mm <b>Optimum 5 - 8mm</b>	
Meat colour	1b - 3 <b>Optimum 1b - 1c</b>	
Fat colour	0 - 3	

**MEDAL SYSTEM**

The Sydney Royal Medal System is utilised in the Carcase section of the Sydney Royal Trade Hoof & Carcase Competition to better recognise those carcasses that meet the appropriate score levels to qualify for a Bronze, Silver or Gold medal.

The following points system is applied in the Sydney Royal Medal System for the Sydney Royal Trade Hoof & Carcase Competition.

Medal	Points (/100)	Market Specifications (/40)	Saleable Meat Yield (/30)	Eating Quality (/30)
Gold	≥ 90	≥ 35	≥ 26	≥ 27
Silver	≥ 82	≥ 31	≥ 23	≥ 27
Bronze	≥ 74	≥ 27	≥ 21	≥ 26

**VIRTUAL TASTE TEST COMPETITION**

The winner will be awarded to the carcasses with the highest Meat Standards Australia (MSA) Index. The MSA Index is a number between 30 to 80, calculated from the carcase's grading assessments. It is a standard National measure to represent the eating quality potential of the whole carcase. To receive a Virtual Taste Test Score, carcasses need to have a pH of less than 5.70 and a minimum rib fat depth of 3mm.

## TRADE HOOF & CARCASE CHAMPIONSHIP

### PRIZE MONEY PER CLASS

#### STEER/HEIFER CLASS

Champion \$500

Reserve Champion \$250

**Conditional Prize:** Cash Prize awarded to the Simmental Exhibit winning Champion Trade Steer or Heifer supported by Simmental NSW. Prize \$10,000 (Must be sired by a registered Simmental Bull)

#### CARCASE CLASS

Champion \$750

Reserve Champion \$500

**Conditional Prize:** Cash Prize awarded to the Simmental Exhibit winning Champion Trade Carcase supported by Simmental NSW. Prize \$10,000 (Must be sired by a registered Simmental Bull)

Prize money in the Carcase Class will be paid out based on the highest scoring carcasses.

**Class 1** - Trade Steer/Heifer

**Liveweight guideline 390 - 480kg**

**Class 2** - Trade Steer/Heifer

**Liveweight guideline 481 - 570kg**

**Class 1A** - Trade Carcase

**Class 2A** - Trade Carcase

#### CHAMPION VIRTUAL TASTE TEST CARCASE

A ribbon will be awarded to the Champion Virtual Taste Test Carcase.

# 2022 BEEF CATTLE COMPETITION

<b>CLOSING DAY OF ENTRY</b>	WEDNESDAY 16 FEBRUARY 2022		
<b>ENTRY FEES</b> <i>All Entry Fees are GST inclusive and non-refundable.</i>	<b>RAS MEMBERS</b> \$78 per Single Class Entry \$19 per Group Class Entry	<b>NON MEMBERS</b> \$104 per Single Class Entry \$25 per Group Class Entry	<b>BEDDING</b> \$75 per head
<b>SUBSTITUTIONS</b>	<b>CLOSING DATE: WEDNESDAY 9 MARCH 2022</b> Substitutes are not required to be nominated at time of entry. Substitutions must be the same breed and Junior for Junior, Senior for Senior, and if applicable Intermediate for Intermediate, of the same sex.		
<b>LATE ENTRIES</b>	<b>CLOSING DATE: FRIDAY 25 MARCH 2022</b> \$300 (incl. GST) per Single Class Entry A Late Entry may be made by an Exhibitor provided that the Exhibitor has an entry in their name or partnership's name. A Late Entry will only be available pending entry numbers at closing Day of Entry for Substitutions and Withdrawals, and may be permitted at the discretion of the Cattle Committee. Late Entry Fee does not include Bedding Fee of \$75 (incl. GST).		
<b>WITHDRAWALS</b>	Provided that notification of withdrawal of an Exhibit in the Beef Section is received in writing to the RAS by <b>Wednesday 9 March 2022</b> , the Bedding Fee of \$75 will be refunded for each head of cattle withdrawn and a fine will not be imposed. <b>Entry Fees are not refundable.</b>		
<b>HEALTH DECLARATIONS</b>	Exhibitors <b>MUST</b> complete the <b>National Cattle Health Declaration (V: 16/04/20)</b> , and submit the form along with Pestivirus results, with entries, to be received by the Cattle Section by <b>Wednesday 16 February 2022</b> .		
<b>BEEF CATTLE REGISTRATION CERTIFICATES</b>	For the 2022 Sydney Royal Easter Show, registration certificates are required and must be provided at the Inspections on Thursday 7 April 2022. All Exhibits will be verified with the relevant Breed Society. <b>PLEASE DO NOT POST OR SEND REGISTRATION CERTIFICATES TO THE RAS.</b>		
<b>EXHIBIT CONFIRMATION ADVICE &amp; DASHBOARD SLIPS</b>	Exhibit Confirmation Advices (Benchslips) and Dashboard Slips will be forwarded to Exhibitors prior to arrival on the Showground. The Exhibit Confirmation Advice, together with the Dashboard Slip, will allow Exhibitors vehicle entry to the Showground. The Dashboard Slip will be issued to Exhibitors with the Showtime Authorised Contact Person's mobile number printed on the slip. Dashboard Slips must be displayed on the dashboard of the vehicle at all times while on the Showground.		
<b>ARRIVAL</b>	8am, Monday 4 April to 8pm, Wednesday 6 April 2022. <b>Arrival for Beef Cattle will be staggered, with priority given to Interstate Exhibitors to arrive on Monday 4 April 2022 from 8am to 2pm.</b> <b>Cattle must be on the Showground by 8pm, Wednesday 6 April 2022.</b> It is the responsibility of Exhibitors' onsite to be aware of and adhere to the Australian Animal Welfare Standards and Guidelines, notably but not restricted to the Land Transportation of Livestock and Model Codes of Practice for the Welfare of Animals.		
<b>INSPECTIONS, WEIGHING &amp; SCANNING</b>	Inspections, weighing and scanning will take place on <b>Thursday 7 April 2022</b> . All bulls will be scanned for Fat Depth measurement and Eye Muscle Area measurement. Scanning will take place during weighing and all measurements recorded on the Exhibit's breast plate.		
<b>DEPARTURE</b>	All Beef Cattle may depart after <b>2pm Tuesday 12 April 2022</b> and must vacate the grounds by <b>7am Wednesday 13 April 2022</b> to allow for the changeover of Pavilions.		
<b>ACCOMMODATION</b>	Due to the evolving situation with respect to Covid-19, on-site accommodation arrangements may change. More information about on-site accommodation will be communicated with Exhibitors closer to the 2022 Show. <b>Onsite accommodation in the lofts will only be available to Exhibitors who have three (3) or more Exhibits, excluding calves at foot, at time of arrival/bump in.</b> <b>Due to Fire regulations, a maximum of 3 persons will be permitted per loft.</b> Sleeping downstairs in the tackroom/locker is not permitted under any circumstances. Please note: <ul style="list-style-type: none"> <li>• <b>Persons under the age of 18 years are NOT permitted to stay overnight on the Showground, unless accompanied by an adult.</b></li> <li>• <b>Lofts and tackrooms are not mutually exclusive and must be shared, in accordance with any Covid-19 restrictions and regulations, where multiple Exhibitors are stalled in a row.</b></li> </ul>		



## SPECIAL REGULATIONS - BEEF CATTLE

The RAS General Regulations apply to all Sections of the Show. These Special Regulations apply to the Beef Cattle Competition only. If there is inconsistency between the General Regulations and these Special Regulations for Beef Cattle, the Special Regulations prevail.

Copies of all Regulations are available from the Administration Office.

The General Regulations are available at [www.rasnsr.com.au](http://www.rasnsr.com.au)

### DEFINITIONS

- In these Special Beef Cattle Regulations, but subject to context:

**Administration Office** means the office designated as such by the RAS for a Show.

**Chief Steward** means the Steward appointed by the RAS to act as Chief Steward in respect of any Class and includes the Steward-in-Chief and any assistant Stewards-in-Chief of the Cattle Section.

**Committee** means the Cattle Section Committee of the RAS

**Cattle Coordinator** means the Person from time to time appointed by the RAS to that position.

**Notifiable Diseases** as required and defined by Federal and NSW State Law.

**Ring** means the area in which any Class is being or is intended to be conducted.

**Veterinary Surgeon** means any veterinarian who is a member of the RAS' Veterinary Committee and includes any veterinarian who has been appointed or engaged by the RAS to provide veterinary services in connection with the Show.

### AGE AND DATE OF BIRTH

- 1 April is the reference date for the calculation of age of an animal for the purposes of entering age Classes in the Beef Cattle Competitions at the Sydney Royal Easter Show.

### ANIMALS NOT NECESSARILY ELIGIBLE TO PARADE OR COMPETE

- An animal will not be eligible to parade or to compete in a Class by reason only of the RAS' acceptance of its entry and/or of its inclusion in the RAS' printed Catalogue.

An animal which by judging day has become ineligible for a Class in which it is entered shall not compete in such Class.

The RAS reserves the right if it so chooses to transfer an animal from a Class in which it has been entered but for which on judging day it is ineligible to compete, to a Class for which it is or has become eligible to compete.

Animals entered in general Classes of a particular breed cannot be Exhibited, shown, paraded or displayed in any other breed category.

It is the responsibility of Exhibitors' onsite to be aware of and adhere to the Australian Animal Welfare Standards and Guidelines, notably but not restricted to the Land Transportation of Livestock and Model Code of Practice for the Welfare of Animals. Under normal circumstances, cattle which are more than eight months pregnant should not be transported. Any Exhibits with calves born on the grounds are ineligible for Competition. Any Exhibits with calves born on grounds after Competition that have won a ribbon and prize will forfeit the ribbon and prize.

### ANIMALS THAT ARE NOT ENTIRE

- An animal, whether male or female, shall not be eligible for Exhibition except in steer Classes, if it is not entire. All genitalia shall be complete, properly formed and proportioned for normal reproduction.

### APPLICATION FOR ENTRY

- An Exhibit cannot compete in any Class additional to that for which it is entered on the Application for Entry.

Information as requested on the Application for Entry must be completed otherwise the application may not be accepted.

### BEDDING

- All animals shall be bedded on material as determined by the RAS.

### BREED GROUPS

- At the Cattle Committee's discretion, breeds will be placed into groups, based on the numbers of cattle Exhibited in the preceding Sydney Royal Easter Show and having regard to any special features of the Show in question. The Committee reserves the right to upgrade breeds, dependent on entries received.

Beef breeds will be placed into the following groups for judging:

Group	No. of Head
A	60+ head
B	40 - 59 head
C	20 - 39 head
D (Other Recognised Breeds)	1 - 19 head

### CALVES AT FOOT

- A calf of an Exhibit may be admitted to the Judging Ring if it is not over 9 months on 1 April 2022 and is being suckled by the Exhibit. Such a calf is to be the natural born progeny of the Exhibit and bear all the permanent tattoo markings as required, if born prior to arrival on the grounds.

All calves at foot must be eligible for full registration in the Herd Book in which its dam is registered.

All calves at foot 6 months or older at the time of arrival at the Showground, must be registered, with the relevant breed society.

The Date of Birth of all calves at foot will be displayed on the breastplate of the cow with which the calf is being exhibited.

### CALVING COWS

- For the Sydney Royal Cattle Competitions, the minimum age for a calf to be exhibited as a Calf at Foot, is 2 weeks old from the opening day of the Show, being Friday 8 April 2022.

Any Exhibits with calves born on the grounds are ineligible for Competition, and are subject to any veterinary and cleaning costs incurred.

Any Exhibits with calves born on grounds after Competition, that have won a ribbon and prize will forfeit the ribbon and prize, and are subject to any veterinary and cleaning costs incurred.

It is the responsibility of Exhibitors' onsite to be aware of and adhere to the Australian Animal Welfare Standards and Guidelines, notably but not restricted to the Land Transportation of Livestock and Model Codes of Practice for the Welfare of Animals. Under normal circumstances, cattle which are more than eight months pregnant should not be transported.

### CATTLE HOSPITAL & VETERINARY SERVICES

- An Exhibitor desirous of using the hospital for sick or calving stock is required to apply to the Veterinary Surgeon on duty through the Administration Office and shall comply with the following:

- (i) An Exhibit shall only be removed from its stall to the General Hospital if it:
  - is about to calve;
  - has suffered an injury requiring medical treatment not otherwise capable in the opinion of the Veterinary Surgeon of being treated in its stall;
  - suffering from a non-infectious or non-contagious disease requiring medical attention.
- (ii) An Exhibit suffering from or suspected of suffering from an infectious or contagious disease shall not be admitted to this hospital.
- (iii) Such Persons only as are authorised by the Veterinary Surgeon may enter the hospital to attend to the Exhibit and shall comply at all times with his directions.
- (b) (i) An Exhibit suffering from or suspected of suffering from an infectious or contagious disease shall be removed forthwith from its stall to the Isolation Hospital upon direction of the Veterinary Surgeon. Other cases may be admitted to this Hospital at the discretion of the Veterinary Surgeon.
- (ii) An Exhibit shall not be admitted to the hospital without the prior authority of the Veterinary Surgeon.
- (iii) An Exhibit once admitted to the hospital shall not be removed there from without the prior authority of the Veterinary Surgeon.

- (iv) Such Persons only as are authorised by the Veterinary Surgeon may enter the hospital to attend to the Exhibit and shall comply at all times with his directions.
- (c) For the purpose of identification of an Exhibit admitted to a hospital, the RAS' breastplate issued in respect thereof shall accompany and remain attached to such Exhibit at all times and Exhibitors who admit their cattle without this identification will be subject to a fine of \$50 for each animal so admitted.
- (d) The Exhibitor or their agent authorised as aforesaid under the direction of the Veterinary Surgeon shall be responsible for the care and feeding of this Exhibit whilst the Exhibit is in a hospital.
- (e) An Exhibitor wishing to have this Exhibit attended to by their nominated veterinarian whilst the Exhibit is in a hospital shall first make arrangement with the Veterinary Surgeon on duty for that purpose.
- (f) If the RAS is of the opinion that an Exhibitor has breached the foregoing Regulations, or any of them, the RAS if it shall so determine may cancel all Awards and forfeit to the RAS all prize money won by such Exhibitor and may fine such Exhibitor for such breach a sum being not less than one hundred dollars (\$100) and not more than one thousand dollars (\$1000) as the RAS in its absolute discretion may determine and may impose such other Penalty or Penalties as it shall see fit.
- (g) All Veterinary Services are to be paid for by credit card or cash prior to leaving the Showground.

#### RIBBONS

- 11. (a) In a Single Class a ribbon or other evidence of a previous Award shall not be worn or displayed in the Ring.
- (b) Subject to the Regulations, Prize Ribbons may be awarded throughout the Cattle Section in accordance with the following table:
  - (i) Single Classes:
 

5 Exhibits and under	up to 3 ribbons
6 to 10 Exhibits	4 placed ribbons
11 to 15 Exhibits	5 placed ribbons
16 to 20 Exhibits	6 placed ribbons

 In addition in Classes of:
 

21 to 25 Exhibits	2 HC ribbons
26 to 30 Exhibits	3 HC ribbons
31 to 35 Exhibits	4 HC ribbons
Over 35 Exhibits	5 HC ribbons

 Extra Highly Commended ribbons may be awarded at the discretion of the Judge.
  - (ii) Other than Single Classes, as specified in individual Class headings.
- (c) (i) As soon as practical after a ribbon has been awarded to an Exhibit it should be displayed conspicuously throughout the remaining period of the Show on the Stall which has been allocated to such Exhibit.
- (ii) Any Exhibitor who fails to comply with (i) above may at the discretion of the Committee be asked to explain his/her actions and may, if thought fit, have their Award for their Exhibit cancelled.

#### CHAMPIONSHIPS - BEEF COMPETITION

- 12. (a) In awarding the Senior Championship in the Beef Cattle Competition, the first prize winners of the relative sex in the single pen Classes for Exhibits over the age of 20 months shall be eligible.
- (b) In awarding the Reserve Senior Championship for the Beef Cattle Competition the Exhibits eligible to compete shall be:
  - (i) the first prize winners of the relative sex in the single pen Classes for Exhibits over the age of 20 months except the winner to which the Championship has been awarded; and
  - (ii) the second prize winner in the Class in which the Exhibit later awarded the Championship was awarded the first prize.
- (c) In awarding the Junior Championship in the Beef Cattle Section the first prize winners of the relative sex in the single pen Classes for Exhibits not over 20 months of age shall be eligible to compete.
- (d) In awarding the Reserve Junior Championship in the Beef Cattle Section the Exhibits eligible to compete shall be:

- (i) the first prize winners of the relative sex in single pen Classes for Exhibits not over 20 months of age excepting the winner to which the Junior Championship has been awarded; and
- (ii) the Exhibit to which the second prize was awarded in the Class in which the Exhibit later awarded Junior Championship was awarded the first prize.
- (e) If the Exhibit to which a Senior Championship has been awarded shall be found to have been disqualified or be found to have been unqualified to compete for the Senior Championship then both the Senior and the relative Reserve Senior Championship Awards shall be cancelled and if such cancellation relates to a male Exhibit the Grand Champion Award shall also be cancelled.

The Senior Championship shall then be awarded to the Exhibit of the same sex to which the cancelled Reserve Senior Championship was previously awarded and thereupon the Judge shall:

- (i) award the Reserve Senior Championship to whichever of the other Exhibits eligible to compete he/she considers of greatest merit; and
- (ii) make a fresh Award of the Grand Championship where such has previously been made to a male Exhibit and has been so cancelled.
- (f) If an Exhibit to which a Junior Championship has been awarded shall be found to have been disqualified or be found to have been unqualified to compete for the Junior Championship then both the Junior and the relative Reserve Junior Championship Awards shall be cancelled and if such cancellation relates to a male Exhibit the Grand Championship Award shall also be cancelled. The Junior Championship shall then be awarded to the Exhibit of the same sex to which the cancelled Reserve Junior Championship was previously awarded and thereupon the Judge shall:
  - (i) award the Reserve Junior Championship to whichever of the other Exhibits eligible to compete he/she considers of greatest merit; and
  - (ii) make a fresh Award of the Grand Championship where such has previously been made to a male Exhibit and has been so cancelled.

#### CLEANING OF STALLS, FEEDING

- 13. Each Exhibitor shall be responsible for the removal of all manure from the stall in which his/her Exhibit is stalled before 7.30am. In case of a breach of the provision the RAS may affect the removal and the Exhibitor shall contribute to the RAS \$50 per stall per day toward the cost of such removal.

An Exhibit not fed and/or watered either by the Exhibitor or their agent will be fed and/or watered by the RAS and a fine of \$100 plus costs will be charged to the Exhibitor or their representative.

No animal is to be fed and watered on the exercise track or wash and tie-up area.

Any Exhibitor who is found contravening this Regulation will be fined \$100. Exhibits are to be fed only in the stall provided.

#### CLIPPING/GROOMING OF ANIMALS

- 14. All animals must be clipped at grooming frames in the allocated/assigned spaces. Animals must not be clipped in stalling modules.

#### DEHORNED ANIMALS

- 15. A dehorned animal competing in any Class shall not be penalised for the absence of horns unless otherwise specified by the relevant Breed Society.

#### ELIGIBILITY: FERTILITY

- 16. A female over 24 months of age, to be eligible for Exhibition, must at the time of inspection be in calf or have calved a live calf. Proof of registration of the calf or a certificate from a veterinarian that the female is in calf or that the female is a donor cow of fertilised ova and that the recipient cow is in calf, must be lodged with the RAS at the time of entry.

**ELIGIBILITY FOR ENTRY AND BREED SOCIETY REGISTRATION**

17. (a) To be eligible for entry, the Exhibit must, at the time of entering the competition:
- Be fully registered by the relevant recognised Beef Cattle Breed Society in the Herdbook of the Society or Association; and
  - The Beef Cattle Breed Society must verify the Exhibit contains at least 15/16ths (93.75% or four generations) blood of the breed being entered.
- (b) A copy of the Breed Society registration certificate (both sides) must be available at the Inspection on the Showground.
- (c) Exhibits registered with more than one Breed Society can only be shown in one breed. Once entered as a particular breed, the Exhibit cannot be exhibited in another breed at any subsequent Sydney Royal Easter Show.

**REGISTRATION AND ANIMAL OWNERSHIP**

18. All cattle entered in the Sydney Royal Beef Cattle Competitions must be registered in the name of the Exhibitor and with a breed society recognised by the RAS.

**ENTRY AND ONGROUND FEES**

19. Entry and onground fees will be set out in the Application for Entry each year.

**EXHIBITOR PASSES**

20. Passes will be allocated as follows:

1 - 3 Head	1 pass
4 - 7 Head	2 passes
8 or more Head	3 passes

Schools may be issued with a maximum of 10 passes at the discretion of the Cattle Coordinator or Chairman.

**FEES ON SALES**

21. Each Exhibitor and/or Selling Agent who offers for Sale or agrees to sell or makes a Sale of a stud animal or portion of a stud animal situated on the Showground or of an animal after leaving the Showground but before the animal has reached the destination to which it was sent from the Showground shall notify the RAS of such Sale and pay to the RAS a fee of 2% of the gross Sale price within 30 days of the last day of the Show.
- Each Exhibitor and/or Selling Agent who offers for Sale or agrees to sell or makes a Sale of semen or an embryo shall notify the RAS of such Sale, and pay to the RAS a fee of 2% of the gross Sale price within 30 days of the last day of the Show.

**FODDER**

22. In accordance with Fire Safety Regulations the storage of silage will not be permitted, and the dimensions of fodder bales must be no larger than 30cm in width, meaning that large bales must be divided and tied off into 30cm blocks before arriving on the grounds. **The storage of silage and large bales by Exhibitors is not permitted in the Pavilions.**

**GRAND PARADE**

23. The Feature breed will lead the Grand Parade Beef Cattle on their respective days. If in years there is no Feature Breed, then it will be led alphabetically.

**GROOMING FRAMES**

24. Exhibitor must apply to the RAS for permission to bring grooming frames onsite. Upon permission Exhibitors will be charged a fee of \$150.

Exhibitors will be assigned a numbered space by the RAS and the frame must remain in the allocated space at all times.

Any Exhibitor whose frame is located outside of the assigned space will be impounded by the RAS and will only be returned to the Exhibitor upon payment of a fee of \$150.

Any grooming frame brought onto the Showground without prior permission will be immediately impounded by the RAS and will only be released to the Exhibitor outside of the Showground and upon payment of a fee of \$250.

**HANDLERS AND ATTENDANTS**

25. The minimum age allowed for handlers or attendants in the General Beef Classes is 12 years of age as at the 1 May 2022.

**IDENTIFICATION OF CATTLE**

26. Each Exhibit in a single Class whilst parading before the Judge shall carry conspicuously as directed by the RAS a breastplate or other identification approved by the RAS corresponding with the number assigned to the Exhibit in respect of that Class in the Catalogue.

Each member of an Exhibit in a group Class whilst parading before the Judge shall carry a breastplate assigned to it as an Exhibit in a single Class in addition to any other breastplate assigned to it as a member of the group.

Each Exhibit must be NLIS tagged.

Exhibitors are required to provide their Property Identification Code (PIC) on their Application for Entry. All Exhibits will be scanned at the Showground.

All animals must have visual management tags removed for the purpose of Exhibiting. **NLIS tags must not be removed.**

**INSPECTIONS**

27. (a) The Shed Breed Captain appointed under regulation 40, or other Person approved by the RAS, shall be requested to assist with Inspections.
- (b) (i) Each animal shall be subject to identification and inspection by the Inspector appointed by the RAS.
- (ii) Each inspector shall submit to the RAS, in writing, a complete report of his findings, immediately after the completion of the inspection, including the absence of any animal listed for inspection.
- (iii) Inspections of all cattle will commence at times to be determined by the RAS.
- (iv) All animals must be tattooed prior to arrival at Showgrounds and it is the responsibility of the Exhibitor to ensure the tattoo and/or working brands match the lodged Application for Entry.
- (v) Exhibitors are strongly advised to inspect marking brands and tattoos prior to lodging an Application for Entry and before departure for the Show.
- (c) Each Inspector shall report only to the RAS in respect of whether or not in his opinion:
- the animal bears all the markings whether in the nature of colour, tattoo, fire, freeze, chemical or otherwise attributed to it in the Application for Entry and does not bear any marking not attributed to it in such application. NLIS is not acceptable as a primary source for an animal's identification.
  - the animal is presented in its natural conformation and conforms with the requirements of the General Regulations and Special Beef Cattle Regulations.
- (d) A bull or heifer shall be ineligible for Exhibition in its Class if at time of inspection of the Exhibit on the Showground in the opinion of the Steward-in-Chief or his nominee:
- in the case of an Exhibit in a Class under 18 months has or shows evidence of having had a permanent tooth; or
  - in the case of an Exhibit in a Class, 18 months and not over 22 months, it shows evidence of having more than 2 permanent teeth.
- (e) An inspector shall not be required to disclose nor shall he/she disclose to the Exhibitor the contents of their report. The Steward-in-Chief after considering each report and after informing the relative Exhibitor or his/her herdsman of their conclusions may disqualify the animal and/or require it to be removed from the Showground or may allow the animal to be paraded and judged.
- (f) The Committee may if it so thinks fit cause such further inspection or examination of the animal to be made and may require that it be subject to such tests as the Committee may think fit and in the light of all information so obtained the Committee may declare that the Exhibitor is guilty of unethical conduct.
- (g) Registration forms are required and must be provided at the inspection of Beef Cattle.

**INTRACTABLE ANIMALS**

28. The RAS may require an animal which, in the opinion of the RAS, is not thoroughly tractable to lead to be forthwith removed from the Showground and the Exhibitor, upon receipt of such notice shall forthwith remove such animal and failing such removal by him within the time prescribed by the RAS, the RAS may remove the animal or cause the animal to be removed and all costs and expenses of removal shall be borne by the Exhibitor and shall be refunded to the RAS.

Each such animal shall at all times be at the sole risk and responsibility of the Exhibitor and the Person or Persons removing the animal shall at all times be deemed to be the agents of the Exhibitor and all acts and omissions on the part of such Person or Persons shall be deemed to be the acts and omissions of the Exhibitor who shall indemnify and hold indemnified the RAS its servants and agents from all claims whatsoever in respect of the animal whether by reason of any loss or injury to or caused by the animal or because of transportation, feeding or housing or otherwise howsoever.

An animal declared as intractable may be refused entry to any future Show held by the RAS.

**MARSHALLING FOR CLASSES OR COMPETITIONS**

29. Any Exhibitor not present with their Exhibit at the Judging Ring at the time of the commencement of the Class or Competition, may not be admitted to the Judging Ring or permitted to compete in such Class or Competition, except at the discretion of the Chief Steward.

**JOHNE'S DISEASE**

30. Unrestricted entry, with all Exhibitors required to complete the **National Cattle Health Declaration (V: 16/04/20)** and submit with entries.

Stalling of Exhibits will be based on J-BAS (John's Beef Assurance Score) or J-DAS (John's Dairy Assurance Score).

**NOMINATION OF EXHIBITOR APPOINTED JUDGE**

31. If after the closing Day of Entry an Exhibitor is appointed to act as Judge in a section in which as an Exhibitor he/she has entered one or more Exhibits such Exhibit shall cease to be eligible to enter or to parade in a Judging Ring allocated to such section but no such Exhibit shall be disqualified from being offered for Sale by reason only of such ineligibility.

**NOSE RINGS, HALTERS, LEADS AND RUGS**

32. All Cattle must be effectively trained to lead.

All Cattle must be restrained in the following manner.

**(a) When stalled:**

Each animal will be securely tied up by an effective neck rope or collar and halter.

**(b) At any other time:**

Minimum requirements

**MALES**

- (i) Under nine months of age will be restrained by a nose grip or nose ring attached to a suitable lead rope.
- (ii) Over nine months of age will be restrained by a nose ring attached to a suitable lead rope and also wear a suitable halter with its own lead rope attached.

**FEMALES**

- (i) Under nine months of age will be restrained by a halter attached to a suitable lead rope.
- (ii) Over nine months of age will be restrained by a nose grip attached to a suitable lead rope and also wear a suitable halter with its own lead rope attached.

**ATTENDANTS**

- (i) All people restraining cattle shall be effectively trained and be able to do so.

**ORDER OF JUDGING**

33. All Classes shall be judged in accordance with the order of Classes as printed in the Schedule for each breed. For the Feature Breed, this may be reviewed at the discretion of the Committee.

**PARADES**

34. Unless the Exhibitor prior to the event produces to the RAS a written certificate signed by a veterinarian that an Exhibit is suffering from an illness or injury which prevents it from being paraded an Exhibit shall be paraded from time to time as directed by the RAS.

Any Exhibitor who fails to parade his/her cattle shall forfeit all prize money (if any) won by him/her and be liable to a fine of \$100, for each animal not paraded. Enforcement of these penalties are at the discretion of the Cattle Committee.

**PESTIVIRUS (BOVINE VIRAL DIARRHOEA VIRUS)**

35. Except where the RAS in its absolute and unfettered discretion may determine otherwise, no cattle in the Beef Cattle Competition, **including calves at foot**, may be Exhibited unless tested for Pestivirus and certified as non PI (Persistently Infected) cattle. Certification of testing and proof of non PI status will be required with Application for Entry in the form of a signed Veterinary Certificate or Laboratory Report, listing animals and their identification. Testing results will be verified by the RAS. Animals previously tested and certified as non PI animals are not required to be re-tested, however certification must be supplied.

**EXHIBITOR ATTIRE**

36. An Attendant of an Exhibit must be attired in accordance with directions given from time to time by the RAS (strong boots or shoes must be worn).

Except as otherwise so directed, an Attendant of an Exhibit, whilst parading such Exhibit before a Judge, shall wear a clean, approved dustcoat or an approved breed uniform. Dustcoats must in no way show any insignia or any descriptive markings indicating the Exhibitor's name and/or stud name or prefix.

An Attendant in the Grand Parade shall wear a dustcoat provided by the RAS which will be issued by the Breed Captains prior to entering the GIANTS Stadium. All Attendants in the Grand Parade must wear a hat whilst in the GIANTS Stadium. Alternatively, Exhibitors may wear their approved Breed Uniform however all Breeds are to have full matching attire and a hat.

**RATIONALISATION OF CLASS NUMBERS**

37. If Classes are in excess of a desired number, the Cattle Committee reserve the right to determine the need to divide such Classes after the closing Day of Entry.

**RESTRICTION OF ENTRIES**

38. If total entries are in excess of the number of cattle capable of being stalled, the Cattle Committee reserve the right to request intending Exhibitors to reduce the number of animals entered.

If rationalisation of numbers is necessary, Exhibitors will be requested to reduce their entries based on the following:

- (a) Maximum three (3) entries per Class for the Feature Breed;
- (b) Maximum two (2) entries per Class for all other breeds.

**SALES AND AUCTIONS**

39. (a) (i) All cattle sales and auctions, including but not limited to live, helmsman, online and grid sales and auctions, conducted at the Sydney Royal Easter Show must be approved in writing by the RAS' Cattle Committee.

(ii) All approved sales and auctions conducted at the Sydney Royal Easter Show will be required to pay the RAS a fee of 2% of the total sale price plus GST, within 30 days of the last day of the Show.

(iii) All cattle sales and auctions conducted at the Sydney Royal Easter Show will be done so in consultation with the Livestock Agents contracted by the RAS and in accordance with the ALPA Livestock Auction Terms and Conditions of Sale.

(b) (i) Genetic lots, including embryo packages, flushes of females and semen straws, are permitted in the sales and auctions conducted at the Sydney Royal Easter Show.

(ii) For genetic lots the sire and/or dam are not required to be exhibited at that specific Sydney Royal Easter Show, and vendors are not required to be Exhibitors at that specific Sydney Royal Easter Show.

- (iii) The total number of genetic lots permitted in any one sale or auction will be 15, with Exhibitors of live cattle having preference to entering lots in the specific sale or auction.
- (iv) A maximum of two lots of the same genetics and a maximum of three genetic lots of the same type, (ie three embryo lots and three semen packages) in total will be allowed per vendor, irrespective of whether they are an Exhibitor in the Sydney Royal Easter Show or not.
- (v) Vendors who are not Exhibitors at that specific Sydney Royal Easter Show will be required to pay the RAS a Non-Exhibitor Administration Fee of \$100. This Non-Exhibitor Administration Fee is additional to any entry fees charged by the Livestock Agent conducting the sale or auction to enter genetic lots into the sale or auction. The Non-Exhibitor Administration Fee is payable to the RAS by Wednesday 9 March 2022.
- (c) The format and parameters of all cattle sales and auctions conducted at the Sydney Royal Easter Show, including sale Entry Fees and permitted lots, will be at the final discretion of the RAS and in consultation with the Livestock Agents contracted by the RAS.
- (d) Responsibility for the transfer of the NLIS data for cattle sold through the sales and auctions conducted at the Sydney Royal Easter Show, rests with the selling agent.

#### **SHED BREED CAPTAINS**

40. Each Cattle Breed Society in Groups A, B and C must nominate persons qualified to act as Shed Breed Captains. The RAS Cattle Committee will appoint a Group D Shed Captain. The RAS must approve the nominees and may require additional nominees.
- Final approval and appointment of all Officials for the Sydney Royal Cattle Show is at the discretion of the Cattle Committee.
- Each Shed Breed Captain shall be responsible for the conduct and parading of the Exhibits of that breed as directed by the Steward-in-Chief.

#### **GROUP CLASS ENTRY REQUIREMENTS**

- 41. (a) **Sire or Dam's Progeny (Group B and C)**  
Sire or Dam's Progeny to consist of three animals, any age, by the one sire or dam. Must be bred and owned by one Exhibitor. Both sexes to be represented. Progeny only to be shown. Exhibits must be entered in the General Classes.
- (b) **Sire's Progeny (Group A and Feature Breed)**  
Sire's Progeny to consist of three animals, any age, by the one sire. Must be bred and owned by one Exhibitor. Both sexes to be represented. Progeny only to be shown. Exhibits must be entered in the General Classes.
- (c) **Dam's Progeny (Group A and Feature Breed)**  
Dam's Progeny to consist of two animals, any age, by the one dam. Must be bred and owned by one Exhibitor. Progeny only to be shown. Exhibits must be entered in the General Classes.
- (d) **Two Bulls, not over 24 months**  
Two bulls, not over 24 months, must be bred and owned by one Exhibitor. Exhibits must be entered in the General Classes.
- (e) **Two Bulls, not over 20 months (Feature Breed)**  
Two bulls, not over 20 months, must be bred and owned by one Exhibitor. Exhibits must be entered in the General Classes.
- (f) **Two Females (Feature Breed)**  
Two females, not over 20 months, must be bred and owned by one Exhibitor. Exhibits must be entered in the General Classes.
- (g) **Breeder's Group**  
Three animals, both sexes to be represented, bred and owned by one Exhibitor. All Exhibits must be entered in the General Classes.

#### **STOCK FLOATS**

42. All Stock must be unloaded from vehicles as soon as possible on arrival. The vehicle once unloaded must immediately leave the Showground.

Any vehicle which arrives after dark must after unloading leave the area and leave the Showground prior to 6am the following morning.

Drivers of vehicles carrying stock to or from the Showground must conform to instructions issued to Exhibitors or their agents.

#### **STORAGE OF FLAMMABLE LIQUIDS**

43. The storage and/or use of a flammable liquid within or in the vicinity of Cattle Pavilions is forbidden.

#### **SIGNAGE AND DISPLAYS**

44. All signage and display material, including but not limited to banners, signs and boards, must not block egresses or exits, must not be set up in a thoroughfare or walkway and must not be excessive in size. The Committee at its discretion may request that Exhibitors remove signage if it is considered excessive in size or not in a suitable place.

#### **STALLS**

45. An Exhibit shall not be stalled other than in the stall or stalls allocated by the RAS to its Exhibitor.
- Exhibit information name boards must be displayed at the head of each Exhibit prior to Inspections.
- Exhibitor/Stud name board not to be larger than 1.5m x 2m.
- Stall decorations/curtains must NOT extend beyond the top of the module and not fall longer than 50cm in depth.
- No sponsor's signage will be permitted within the Pavilions, unless prior approval is granted.
- Failure on the part of the Exhibitor to comply with any of the above shall be dealt with by the Steward-in-Chief or the Assistant Steward-in-Chief, as he/she shall see fit.
- A calf must be stalled with its mother and, though tethered, must have unrestricted access to her at all times.

#### **DIVIDERS AND CALF PENS**

46. Use of dividers and calf pens will not be permitted.

#### **WEIGHING, MOUTHING AND MEASURING**

47. All bulls entered in the Beef Section of the Sydney Royal Easter Show may, whilst on the Showground, and prior to judging be weighed, mouthed and measured for fat cover and Eye Muscle Area by the use of ultrasonic equipment and/or any other measurement deemed necessary by the Cattle Committee or such other assessors as the RAS may appoint.
- All Judges will be informed of the weights and measures. If time permits other Classes will be weighed, mouthed and measured at the discretion of the Steward-in-Chief.
- It will be the responsibility of the Exhibitor that their Exhibit has been weighed, mouthed and measured prior to being Exhibited at the time allocated by the Cattle Committee. The Exhibit will be disqualified if not weighed, mouthed and measured at the allocated time.

#### **WITHDRAWALS**

48. (a) The RAS reserves the right to enforce withdrawals at their discretion if the number of entries exceeds capacity.
- (b) Notification of withdrawal of an Exhibit in the Beef Cattle Competition must be received in writing by the RAS by **Wednesday 9 March 2022** to be eligible for a refund of Bedding Fee (\$75) for each head of cattle withdrawn and a fine will not be imposed. **Entry Fees are not refundable.** Provided that notification of withdrawal of an Exhibit in the Beef Cattle Competition is received in writing one week prior to the first day of the Show, being **Friday 1 April 2022**, a fine will not be imposed if such a withdrawal is caused by:
- (i) the death of the Exhibit; or
  - (ii) the Exhibit is unfit by way of injury or ill health; or
  - (iii) any other reason satisfactory to the Cattle Committee.
- A notification of withdrawal provided after **Friday 1 April 2022** will incur a fine of \$200. Withdrawals received at the time of Inspections on **Thursday 7 April 2022** will incur a fine.
- If the fine imposed has not been paid within 24 hours from when the fine was issued, the Exhibitor may be disqualified or prize money will be withheld.

#### **PROHIBITED SUBSTANCE**

49. (a) General Regulations 126 to 137 apply to the Cattle Show except as provided below.
- (b) Where, as permitted by the General Regulations, a Prohibited Substance is administered to an Exhibit, it must be administered by a Veterinary Surgeon, except for antibiotic mastitis treatments which may be administered at the discretion of the Exhibitor. A treatment notification form must also be submitted to the Cattle Committee for such mastitis treatments.
- (c) In the case of the proposed administration of an anti-inflammatory substance, the Treatment Notification Form must be signed by two Veterinary Surgeons.
- (d) Random testing for prohibited substances will be conducted.

#### **PROHIBITED IN PAVILION AND ON GROUNDS**

50. Scooters, skateboards and bikes are not permitted on the Showgrounds or in the Pavilions.

#### **NOTIFIABLE DISEASES**

51. Any animal/s infected with Notifiable Disease/s, and ringworm, can be disqualified and may be removed from grounds at the discretion of the RAS Committee and Veterinary Surgeon.

#### **USE OF BLOWERS**

52. Blowers are not permitted to be used before 4.30am each day, and failure to comply may result in a fine of \$250 and disqualification from the Competition.

#### **EXHIBITOR RESPONSIBILITY**

53. All Exhibitors are responsible for the conduct and actions of their fitters, agents or any persons associated with the preparation and exhibition of their Exhibits, including adherence to the Special Regulations and General Regulations.

If an Exhibitor is found to be in breach of a Special Regulation and/or General Regulation as a result of the actions or conduct of their fitter, agent or any persons associated with the preparation and exhibition of their Exhibits, the Exhibitor is subject to any penalties as deemed by the RAS.

#### **PERPETUAL TROPHIES**

54. Perpetual Trophies remain the property of the Royal Agricultural Society of NSW. Ownership of the Trophy does not pass to the winning Exhibitor. A medallion will be presented to the annual winner whose name will be engraved on the Trophy.

**BREED SOCIETY REGISTRATION**

To be eligible for entry, as at the closing Day of Entry, the Exhibit must be registered with a Breed Society or Association recognised by the RAS.

BREED	RECOGNISED BREED SOCIETY OR ASSOCIATION
ANGUS	Exhibits must be registered with the ANGUS SOCIETY OF AUSTRALIA.
AUSTRALIAN LOWLINE	Exhibits must be registered with the AUSTRALIAN LOWLINE CATTLE ASSOCIATION INC.
BELGIAN BLUE	Exhibits must be registered with the AUSTRALIAN BELGIAN BLUE CATTLE SOCIETY INC.
BRAHMAN	Exhibits must be registered with the AUSTRALIAN BRAHMAN BREEDERS ASSOCIATION.
CHAROLAIS	Exhibits must be registered with the CHAROLAIS SOCIETY OF AUSTRALIA LTD.
DEVON	Exhibits must be registered with the DEVON CATTLE BREEDERS' SOCIETY OF AUSTRALIA.
DEXTER	Exhibits must be registered with the DEXTER CATTLE AUSTRALIA INC.
GALLOWAYS, incorporating BELTED GALLOWAY and GALLOWAY	Exhibits must be registered with the AUSTRALIAN BELTED GALLOWAY ASSOCIATION INC., GALLOWAYS AUSTRALIA INC., or the AUSTRALIAN GALLOWAY ASSOCIATION INC.
GELBVIEH	Exhibits must be registered with the AUSTRALIAN GELBVIEH ASSOCIATION INC.
HEREFORD	Exhibits must be registered with HEREFORDS AUSTRALIA LTD.
LIMOUSIN	Exhibits must be registered with the AUSTRALIAN LIMOUSIN BREEDERS' SOCIETY LTD.
LINCOLN RED	Exhibits must be registered with the LINCOLN RED CATTLE SOCIETY (AUST) LTD.
MAINE ANJOU	Exhibits must be registered with the MAINE-ANJOU SOCIETY OF AUSTRALIA LTD.
MURRAY GREY	Exhibits must be registered with the MURRAY GREY BEEF CATTLE SOCIETY or the MURRAY GREY AUSTRALIA BREEDERS ASSOCIATION INC.
PIEDMONTESE	Exhibits must be registered with the AUSTRALIAN PIEDMONTESE CATTLE ASSOCIATION.
PINZGAUER	Exhibits must be registered with the AUSTRALIAN PINZGAUER BREEDERS ASSOCIATION.
RED ANGUS	Exhibits must be registered with the RED ANGUS SOCIETY OF AUSTRALIA or the ANGUS SOCIETY OF AUSTRALIA.
RED POLL	Exhibits must be registered with the AUSTRALIAN RED POLL CATTLE BREEDERS INC.
ROMAGNOLA	Exhibits must be registered with the ROMAGNOLA BREEDERS' SOCIETY LTD.
SANTA GERTRUDIS	Exhibits must be registered with the SANTA GERTRUDIS BREEDERS' (AUSTRALIA) ASSOCIATION.
SHORTHORNS	Exhibits must be registered with the SHORTHORN SOCIETY OF AUSTRALIA or the BEEF SHORTHORN SOCIETY OF AUSTRALIA.
SIMMENTAL-FLECKVIEH	Exhibits must be registered with the AUSTRALIAN SIMMENTAL BREEDERS ASSOCIATION or the FLECKVIEH SOCIETY OF AUSTRALIA INC.
SOUTH DEVON	Exhibits must be registered with the SOUTH DEVON CATTLE SOCIETY OF AUSTRALIA INC.
SPECKLE PARK	Exhibits must be registered with SPECKLE PARK INTERNATIONAL INC.
SQUARE MEATERS	Exhibits must be registered with the SQUARE MEATERS CATTLE ASSOCIATION OF AUSTRALIA LTD.
WAGYU	Exhibits must be registered with the AUSTRALIAN WAGYU ASSOCIATION.

## SIMMENTAL – 2022 FEATURE

For the 2022 Simmental Australia Feature, Exhibits must be registered with the Australian Simmental Breeders Association.

**NOTE:** The reduced minimum age to 8 months for both female and bull Classes for the Simmental Feature Show.  
A calf which is Exhibited as a calf at foot cannot be Exhibited in an 8 & not over 10 months class, and vice versa.

Classes may be split at the discretion of the Cattle Committee if number of Exhibits in the Class exceeds 25 head.

CLASS DESCRIPTION	AGE TABLE	CLASS
<b>FEMALES</b>		
Female, 8 & not over 10mths	Born on or after 1 June 2021 & before 1 August 2021	3900
Female, over 10 & not over 12mths	Born on or after 1 April 2021 & before 1 June 2021	3901
Female, over 12 & not over 14mths	Born on or after 1 February 2021 & before 1 April 2021	3902
Female, over 14 & not over 16mths	Born on or after 1 December 2020 & before 1 February 2021	3905
Female, over 16 & not over 18mths	Born on or after 1 October 2020 & before 1 December 2020	3906
Female, over 18 & not over 20mths	Born on or after 1 August 2020 & before 1 October 2020	3907
Two Females, not over 20mths	Born before 1 August 2020	3911
Female, over 20 & not over 24mths	Born on or after 1 April 2020 & before 1 August 2020	3912
Female, over 24 & not over 30mths	Born on or after 1 October 2019 & before 1 April 2020	3913
Female, over 30 & not over 36mths	Born on or after 1 April 2019 & before 1 October 2019	3914
Female, over 36 & not over 48mths	Born on or after 1 April 2018 & before 1 April 2019	3915
Female, over 48mths	Born before 1 April 2018	3916
<b>BULLS</b>		
Bull, 8 & not over 10mths	Born on or after 1 June 2021 & before 1 August 2021	3920
Bull, over 10 & not over 12mths	Born on or after 1 April 2021 & before 1 June 2021	3921
Bull, over 12 & not over 14mths	Born on or after 1 February 2021 & before 1 April 2021	3922
Bull, over 14 & not over 16mths	Born on or after 1 December 2020 & before 1 February 2021	3925
Bull, over 16 & not over 18mths	Born on or after 1 October 2020 & before 1 December 2020	3926
Bull, over 18 & not over 20mths	Born on or after 1 August 2020 & before 1 October 2020	3927
Two Bulls, not over 20mths	Born before 1 August 2020	3930
Bull, over 20 & not over 22mths	Born on or after 1 June 2020 & before 1 August 2020	3931
Bull, over 22 & not over 24mths	Born on or after 1 April 2020 & before 1 June 2020	3932
Bull, over 24 & not over 30mths	Born on or after 1 October 2019 & before 1 April 2020	3933
Bull, over 30 & not over 36mths	Born on or after 1 April 2019 & before 1 October 2019	3934
Sire's Progeny		3938
Dam's Progeny		3939
Breeder's Group		3940

**Please Note:** The RAS will place breeds into groups at the Committee's discretion, based on the numbers of cattle Exhibited in the preceding Sydney Royal Easter Show and having regard to any special features of the Show in question. The Committee reserves the right to upgrade breeds, dependent on entries received (Refer to Special Regulation 7).



**GROUP A (60+ head)**

CLASS DESCRIPTION	AGE TABLE	ANGUS	CHAROLAIS	HEREFORD	LIMOUSIN	SHORTHORNS	SPECKLE PARK
<b>FEMALES</b>							
Female, 9 & not over 12mths	Born on or after 1 April 2021 & before 1 July 2021	0001	1300	2100	2300	3800	4100
Female, over 12 & not over 14mths	Born on or after 1 February 2021 & before 1 April 2021	0002	1301		2301		4101
Female, over 12 & not over 15mths	Born on or after 1 January 2021 & before 1 April 2021			2101		3801	
Female, over 14 & not over 16mths	Born on or after 1 December 2020 & before 1 February 2021	0003	1302		2302		4102
Female, over 15 & not over 18mths	Born on or after 1 October 2020 & before 1 January 2021			2102		3802	
Female, over 16 & not over 18mths	Born on or after 1 October 2020 & before 1 December 2020	0004	1303		2303		4103
Female, over 18 & not over 19mths	Born on or after 1 September 2020 & before 1 October 2020	0005	1304	2103	2304	3803	4104
Female, over 19 & not over 20mths	Born on or after 1 August 2020 & before 1 September 2020	0006	1305	2104	2305	3804	4105
Female, over 20 & not over 24mths	Born on or after 1 April 2020 & before 1 August 2020	0009	1308	2107	2308	3807	4108
Female, over 24 & not over 30mths	Born on or after 1 October 2019 & before 1 April 2020	0010	1309	2108	2309	3808	4109
Female, over 30 & not over 36mths	Born on or after 1 April 2019 & before 1 October 2019	0011	1310	2109	2310	3809	4110
Female, over 36mths	Born before 1 April 2019	0012	1311	2110	2311	3810	4111
<b>BULLS</b>							
Bull, 9 & not over 12mths	Born on or after 1 April 2021 & before 1 July 2021	0016	1315	2114	2315	3814	4115
Bull, over 12 & not over 14mths	Born on or after 1 February 2021 & before 1 April 2021	0017	1316		2316		4116
Bull, over 12 & not over 15mths	Born on or after 1 January 2021 & before 1 April 2021			2115		3815	
Bull, over 14 & not over 16mths	Born on or after 1 December 2020 & before 1 February 2021	0018	1317		2317		4117
Bull, over 15 & not over 18mths	Born on or after 1 October 2020 & before 1 January 2021			2116		3816	
Bull, over 16 & not over 18mths	Born on or after 1 October 2020 & before 1 December 2020	0019	1318		2318		4118
Bull, over 18 & not over 19mths	Born on or after 1 September 2020 & before 1 October 2020	0020	1319	2117	2319	3817	4119
Bull, over 19 & not over 20mths	Born on or after 1 August 2020 & before 1 September 2020	0021	1320	2118	2320	3818	4120
Bull, over 20 & not over 24mths	Born on or after 1 April 2020 & before 1 August 2020	0024	1323	2121	2323	3821	4123
Bull, over 24 & not over 30mths	Born on or after 1 October 2019 & before 1 April 2020	0025	1324	2122	2324	3822	4124
Bull, over 30 & not over 36mths	Born on or after 1 April 2019 & before 1 October 2019	0026	1325	2123	2325	3823	4125
Two Bulls, not over 24mths	Born on or after 1 April 2020	0030	1329	2127	2329	3827	4129
Sire's Progeny		0031	1330	2128	2330	3838	4130
Dam's Progeny		0032	1331	2129	2331	3829	4131
Breeder's Group		0033	1332	2130	2332	3830	4132

**Please Note:** The RAS will place breeds into groups at the Committee's discretion, based on the numbers of cattle Exhibited in the preceding Sydney Royal Easter Show and having regard to any special features of the Show in question. The Committee reserves the right to upgrade breeds, dependent on entries received (Refer to Special Regulation 7).

**GROUP B (40 - 59 head)**

CLASS DESCRIPTION	AGE TABLE	MURRAY GREY	RED ANGUS	SANTA GERTRUDIS
<b>FEMALES</b>				
Female, 9 & not over 12mths	Born on or after 1 April 2021 & before 1 July 2021	2800	3200	3700
Female, over 12 & not over 16mths	Born on or after 1 December 2020 & before 1 April 2021	2801	3201	3701
Female, over 16 & not over 20mths	Born on or after 1 August 2020 & before 1 December 2020	2802	3202	3702
Female, over 20 & not over 24mths	Born on or after 1 April 2020 & before 1 August 2020	2805	3205	3705
Female, over 24 & not over 30mths	Born on or after 1 October 2019 & before 1 April 2020	2806	3206	3706
Female, over 30mths	Born before 1 October 2019	2807	3207	3707
<b>BULLS</b>				
Bull, 9 & not over 12mths	Born on or after 1 April 2021 & before 1 July 2021	2811	3211	3711
Bull, over 12 & not over 16mths	Born on or after 1 December 2020 & before 1 April 2021	2812	3212	3712
Bull, over 16 & not over 18mths	Born on or after 1 October 2020 & before 1 December 2020			3713
Bull, over 16 & not over 20mths	Born on or after 1 August 2020 & before 1 December 2020	2813	3213	
Bull, over 18 & not over 20mths	Born on or after 1 August 2020 & before 1 October 2020			3714
Bull, over 20 & not over 24mths	Born on or after 1 April 2020 & before 1 August 2020	2816	3216	3717
Bull, over 24 & not over 30mths	Born on or after 1 October 2019 & before 1 April 2020	2817	3217	3718
Bull, over 30 & not over 36mths	Born on or after 1 April 2019 & before 1 October 2019	2818	3218	3719
Two Bulls, not over 24mths	Born on or after 1 April 2020	2822	3222	3723
Sire or Dam's Progeny		2823	3223	3724
Breeder's Group		2824	3224	3725

**Please Note:** The RAS will place breeds into groups at the Committee's discretion, based on the numbers of cattle Exhibited in the preceding Sydney Royal Easter Show and having regard to any special features of the Show in question. The Committee reserves the right to upgrade breeds, dependent on entries received (Refer to Special Regulation 7).

**GROUP C (20 - 39 head)**

CLASS DESCRIPTION	AGE TABLE	AUSTRALIAN LOWLINE	BRAHMAN	DEVON	RED POLL
<b>FEMALES</b>					
Female, 9 & not over 12mths	Born on or after 1 April 2021 & before 1 July 2021	0100	0800	1500	3300
Female, 9 & not over 14mths	Born on or after 1 February 2021 & before 1 July 2021				
Female, over 12 & not over 16mths	Born on or after 1 December 2020 & before 1 April 2021	0101	0801	1501	3301
Female, over 14 & not over 20mths	Born on or after 1 August 2020 & before 1 February 2021				
Female, over 16 & not over 20mths	Born on or after 1 August 2020 & before 1 December 2020	0102	0802	1502	3302
Female, over 20 & not over 24mths	Born on or after 1 April 2020 & before 1 August 2020	0105			
Female, over 20 & not over 30mths	Born on or after 1 October 2019 & before 1 August 2020		0805	1505	3305
Female, over 24 & not over 30mths	Born on or after 1 October 2019 & before 1 April 2020	0106			
Female, over 30mths	Born before 1 October 2019	0107	0806	1506	3306
<b>BULLS</b>					
Bull, 9 & not over 12mths	Born on or after 1 April 2021 & before 1 July 2021	0111	0810	1510	
Bull, 9 & not over 14mths	Born on or after 1 February 2021 & before 1 July 2021				3310
Bull, over 12 & not over 16mths	Born on or after 1 December 2020 & before 1 April 2021	0112	0811	1511	
Bull, over 14 & not over 20mths	Born on or after 1 August 2020 & before 1 February 2021				3311
Bull, over 16 & not over 20mths	Born on or after 1 August 2020 & before 1 December 2020	0113	0812	1512	
Bull, over 20 & not over 24mths	Born on or after 1 April 2020 & before 1 August 2020	0116			
Bull, over 20 & not over 30mths	Born on or after 1 October 2019 & before 1 August 2020		0815	1515	3314
Bull, over 24 & not over 30mths	Born on or after 1 October 2019 & before 1 April 2020	0117			
Bull, over 30 & not over 36mths	Born on or after 1 April 2019 & before 1 October 2019	0118	0816	1516	3315
Two Bulls, not over 24mths	Born on or after 1 April 2020	0122	0820	1520	3319
Sire or Dam's Progeny		0123	0821	1521	3320

**Please Note:** The RAS will place breeds into groups at the Committee's discretion, based on the numbers of cattle Exhibited in the preceding Sydney Royal Easter Show and having regard to any special features of the Show in question. The Committee reserves the right to upgrade breeds, dependent on entries received (Refer to Special Regulation 7).

**GROUP D - Other Recognised Breeds (1 - 19 head)**

BELGIAN BLUE  
DEXTER  
DROUGHTMASTER  
FLECKVIEH  
GALLOWAYS  
GELBVIEH  
LINCOLN RED  
MAINE ANJOU  
PIEDMONTESE  
PINZGAUER  
ROMAGNOLA  
SOUTH DEVON  
SQUARE MEATERS  
WAGYU

Breeds with 1 - 19 Exhibits will be judged together in the Other Recognised Breeds Category in the following Classes.

Any Breed not listed should apply for consideration for judging in the Other Recognised Breeds Category.

CLASS DESCRIPTION	AGE TABLE	CLASS
<b>FEMALES</b>		
Female, 9 & not over 14mths	Born on or after 1 February 2021 & before 1 July 2021	5000
Female, over 14 & not over 20mths	Born on or after 1 August 2020 & before 1 February 2021	5001
Female, over 20 & not over 30mths	Born on or after 1 October 2019 & before 1 August 2020	5002
Female, over 30mths	Born before 1 October 2019	5003
<b>BULLS</b>		
Bull, 9 & not over 14mths	Born on or after 1 February 2021 & before 1 July 2021	5006
Bull, over 14 & not over 20mths	Born on or after 1 August 2020 & before 1 February 2021	5007
Bull, over 20 & not over 30mths	Born on or after 1 October 2019 & before 1 August 2020	5008
Bull, over 30 & not over 36mths	Born on or after 1 April 2019 & before 1 October 2019	5009

**Please Note:** The RAS will place breeds into groups at the Committee's discretion, based on the numbers of cattle Exhibited in the preceding Sydney Royal Easter Show and having regard to any special features of the Show in question. The Committee reserves the right to upgrade breeds, dependent on entries received (Refer to Special Regulation 7).

**MOST SUCCESSFUL BEEF EXHIBITOR****OVERALL WINNER**

The Most Successful Exhibitor (By Breed) gaining the highest number of points in the Beef Cattle Section, shall be the winner.

In the event of two or more Most Successful Exhibitors (By Breed) gaining an equal number of points, the Most Successful Exhibitor (By Breed) gaining the greatest number of first places shall be the winner. Should a tie still occur, the second and third prizes will be taken into consideration.

If an Exhibitor is the Most Successful Exhibitor (By Breed) in more than one Breed, the Breed in which the highest number of points was gained shall be taken into account only. A ribbon will be presented to the winner.

**BY BREED WINNERS**

- For the five highest Award placings in each Single Class only; points shall be allocated on the basis of 5, 4, 3, 2, 1. Should there be fewer than 5 Award placings in any one Single Class, the points shall be on the said basis in order of merit (eg. if only 3 Entries in a Class, points will be allocated 5, 4, 3).
- There shall be:
  - 3 points for Junior Champion
  - 2 points for Reserve Junior Champion
  - 3 points for Senior Champion
  - 2 points for Reserve Senior Champion
  - 2 points for Grand Champion
  - 2 points for Best Exhibit

Where the Feature Breed contains Championships outside the above, there shall be:

- 3 points for any Champion
  - 2 points for any Reserve Champion
- In each Group Class, including any additional Group Classes for the Feature Breed, points shall be awarded on the following basis:
    - 5 points for 1st place
    - 4 points for 2nd place
    - 3 points for 3rd place
  - The Exhibitor gaining the highest number of points, within each Breed, shall be the winner. In the event that two or more Exhibitors gain an equal number of points, the Exhibitor with the greatest number of first prizes will gain the Award. Should a tie still occur, the second and third prizes will be taken into consideration.
  - For Breed Winners to be awarded, there must be three or more Exhibitors in each Breed.

**PREMIER BEEF BREEDER AWARD**

A ribbon will be provided to the Most Successful Beef Cattle Breeder of the Show.

- All Exhibits carrying the same stud prefix will be eligible to gain points towards the Breeder Award.
- To be eligible for this Award the Breeder must have Exhibits entered into the current Show. For those Breeders who carry a stud prefix across more than one breed, the points will be allocated on a per breed basis. Points will not accumulate across multiple breeds with the same stud prefix.
- There must be three or more Exhibitors in each Breed to gain points towards this Award.
- For the five highest Award placings in each Single Class only; points shall be allocated on the basis of 5, 4, 3, 2, 1. Should there be fewer than 5 Award placings in any one Single Class, the points shall be on the said basis in order of merit (eg. if only 3 Entries in a Class, points will be allocated 5, 4, 3).
- There shall be:
  - 3 points for Junior Champion
  - 2 points for Reserve Junior Champion
  - 3 points for Senior Champion
  - 2 points for Reserve Senior Champion
  - 2 points for Grand Champion
  - 2 points for Best Exhibit

Where the Feature Breed contains Championships outside the above, there shall be:

- 3 points for any Champion
- 2 points for any Reserve Champion

- The Breeder gaining the highest number of points, per stud prefix per breed, shall be the winner.

In the event that two or more Breeders gain an equal number of points, the Breeder with the greatest number of Grand Champions shall be the winner. Should a tie still occur, the Champions and Reserve Champions will be taken into consideration.

**HERDSMAN'S BEST MAINTAINED BEEF TEAM COMPETITION****OVERALL WINNER**

This Competition is defined as follows:

- The winner will be the best displayed and maintained team, either two to five head and/or over five head.
- The overall prize winners, will receive first, second and third prize ribbons.

*The Glen Pfeffer Herdsman's Prize for the Overall Winner supported by Dr George Jacobs of Mogul Brahman Stud. Prizes 1st \$500, 2nd \$250, 3rd \$125*

*Prize Voucher for the Overall Winner supported by Limitless Show Supplies. Prize 1st \$50*

**BY BREED WINNERS**

This Competition is defined as follows:

- The winner will be the best displayed and maintained team within each breed.
  - The Award is open to Exhibitors within the Beef Section.
- The Competition is divided into two parts:
    - Exhibitors with two to five head of cattle.
    - Exhibitors with over five head of cattle.
  - In the case of contract feeders who look after several breeds of cattle, they are to be regarded as a single Exhibitor within a breed.
  - The Competition is to encourage Exhibitors to display and maintain their teams in a manner befitting the Beef and Dairy Industries.
  - There will be no Entry Fee and all Exhibitors with the required number of cattle will be treated as Competitors.
  - Judging will take place in the Cattle Pavilions from the morning of **Friday 8 April 2022 through to the evening of Monday 11 April 2022.**
  - The points will be divided in the following manner:

	Points
(a) Groomed appearance of the cattle	25
(b) Tidiness	25
(c) Condition and cleanliness of bedding	25
(d) Overall presentation, promotion and public relations	25
<b>TOTAL</b>	<b>100</b>

**BEST DISPLAYED BEEF BREED COMPETITION**

The Award shall be determined as follows:

- The Competition is to encourage breeds to display and maintain their Breeds in a manner befitting the Beef Industry.
- Judging will take place in the Cattle Pavilions, Beef Section, from the morning of **Friday 8 April 2022 through to the evening of Monday 11 April 2022.**
- There will be no Entry Fee and all Breeds will be treated as Competitors.
- A first place ribbon will be awarded to the winning Breed Society.
- Points will be awarded on the following basis:

	Points
(a) Groomed appearance of the cattle	25
(b) Tidiness	25
(c) Condition and cleanliness of bedding	25
(d) Overall presentation, promotion and public relations	25
<b>TOTAL</b>	<b>100</b>

## BEEF CATTLE PARADERS' COMPETITIONS

<b>DRESS CODE</b>	Competitors in all Paraders' Competitions shall wear a white dust coat with no logo. Hats are optional whilst parading before a Judge, however caps are not permitted.
<b>ENTRY RESTRICTIONS</b>	<b>Competitors shall only compete in one Beef Cattle Paraders' Competition (F000, F001, F002 or F003).</b>
<b>ELIGIBLE EXHIBITS</b>	All Competitors in the Beef Cattle Paraders' Competitions on Thursday 7 April 2022 shall lead an animal entered in the General Beef Cattle Classes or Steer Classes, as advised for each Competition.

### JUNIOR PARADERS' COMPETITION (F000)

Junior Paraders' Competition - 8 years and under 13 years of age (Date of Birth taken as at 1 May 2022).

<b>CONDITIONS</b>	<ul style="list-style-type: none"> <li>Winner of Junior Paraders' Competition are <b>ineligible</b> to compete in Grand Champion Parader State Final.</li> <li><b>Competitors in F000 shall lead a Junior Heifer from the General Beef Cattle Classes.</b></li> </ul>
<b>CLOSING DAY OF ENTRY</b>	12 NOON WEDNESDAY 6 APRIL 2022
<b>ENTRY FEE</b>	FREE
<b>JUDGING DAY</b>	THURSDAY 7 APRIL 2022

### SCHOOL PARADERS' COMPETITION (F001)

School Paraders' Competition for Schools entered in the Purebred Steer School Classes 1 - 3.

#### CHAMPION AND RESERVE CHAMPION SCHOOL PARADER

The first placegetter from each heat shall parade for the Champion School Parader.

The second placegetter from the heat won by the Champion School Parader, is then judged with the remaining first placegetters for the Reserve Champion School Parader.

Prizes 1st \$70, 2nd \$35 and ribbons.

**The ASC/RAS Perpetual Shield, for the Champion School Parader.**

The **ASC Plaque**, presented to the Champion School Parader.

<b>CONDITIONS</b>	<ul style="list-style-type: none"> <li>Applications for Entry shall be signed by the School Principal.</li> <li>One entry per School only.</li> <li><b>Competitors in F001 shall lead the Purebred School Steer from Classes 1 - 3.</b></li> <li>Competitors shall be representing a School which has an entry in the Purebred Steer School Classes 1 – 3.</li> <li>Champion of School Paraders' Competition (F001), to compete in the Grand Champion Parader State Final.</li> <li><b>Students entering in this Competition (F001) are ineligible to compete in F002.</b></li> <li>Heats shall be determined on the number of entries; ribbons shall be presented to the placegetters in each heat.</li> <li>A winner of two F001 Championships shall not be eligible for future competition in F001.</li> <li>A Champion of F001 is eligible to compete in F002 and F003 in future years.</li> <li>The Reserve Champion School Parader (F001) is eligible to compete in the State Final for Reserve Champion Parader.</li> <li>For the State Final, the Champion and Reserve Champion School Parader shall lead the Purebred School Steer they led in F001.</li> <li><b>In order to be eligible to proceed to the ASA National Beef Cattle Paraders' Championship, Competitors shall be 15 and under 25 years of age on 1st May in the year of the Competitor's State Final.</b></li> <li><b>Should the Champion School Parader (F001) win Grand Champion Parader State Final, Competitors under the age of 18 shall be accompanied by a chaperone.</b></li> </ul>
<b>CLOSING DAY OF ENTRY</b>	12 NOON WEDNESDAY 6 APRIL 2022
<b>ENTRY FEE</b>	FREE
<b>JUDGING DAY</b>	THURSDAY 7 APRIL 2022

### RAS/ASC BEEF CATTLE PARADERS' FINAL (F002)

The RAS/ASC Paraders' Competition - 13 years and under 19 years (Date of birth taken as at 1 May 2022).

#### CHAMPION AND RESERVE CHAMPION RAS/ASC PARADER

The first placegetter from each heat shall parade for the Champion RAS/ASC Parader.

The second placegetter from the heat won by the Champion RAS/ASC Parader, is then judged with the remaining first placegetters for the Reserve Champion RAS/ASC Parader.

**The Michael Allen Memorial Perpetual Trophy, donated by the Stock and Station Agents Association Ltd (Australian Livestock & Property Agents Association), for the Champion RAS/ASC Parader.**

Prizes 1st \$70, 2nd \$35 and ribbons.

The **ASC Plaque**, presented to the Champion RAS/ASC Parader.

<b>CONDITIONS</b>	<ul style="list-style-type: none"> <li>Competitors qualify via an ASC Group Final, to be conducted during the previous 12 months.</li> <li><b>Competitors in F002 shall lead a Junior Heifer or Steer.</b></li> <li>Competitors can compete in multiple Group Finals unless already qualified for that particular competition. If already qualified, they are eligible to enter for practice only, but shall inform the organisers before competition begins.</li> <li>All results of Group Finals shall be forwarded (including a full list of Competitors) to the ASC as soon as possible.</li> <li>Finalists to progress to Class F002 at the Sydney Royal Easter Show shall be chosen on the number of Competitors in a Group Final.</li> <li>The number to compete in the RAS/ASC Beef Cattle Paraders' Final shall be:               <table> <tr> <td>1 to 10 entries</td><td>3 to compete</td></tr> <tr> <td>11 to 20 entries</td><td>6 to compete</td></tr> <tr> <td>21 to 30 entries</td><td>9 to compete</td></tr> <tr> <td>Over 30 entries</td><td>10 to compete</td></tr> </table> </li> <li>Individual ASC Groups shall determine where Group Finals shall be held.</li> <li>Heats shall be determined on the number of entries; ribbons shall be presented to the placegetters in each heat.</li> <li>A winner of two F002 Championships shall not be eligible for future competition in F002.</li> <li><b>As per ASC Guidelines, in order to be eligible to proceed to the ASA National Beef Cattle Paraders' Championship, Competitors shall be 15 and under 25 years of age on 1st May in the year of the Competitors State Final. Competitors under the age of 18 shall be accompanied by a chaperone.</b></li> <li><b>Should the Grand Champion Parader not be of eligible age to compete for the ASA National Beef Cattle Paraders' Championship, the next placed Competitor of eligible age shall be the NSW Representative for that Competition.</b></li> </ul>	1 to 10 entries	3 to compete	11 to 20 entries	6 to compete	21 to 30 entries	9 to compete	Over 30 entries	10 to compete
1 to 10 entries	3 to compete								
11 to 20 entries	6 to compete								
21 to 30 entries	9 to compete								
Over 30 entries	10 to compete								
<b>CLOSING DAY OF ENTRY</b>	THROUGH THE ASC PARADER COMPETITIONS								
<b>ENTRY FEE</b>	FREE								
<b>JUDGING DAY</b>	THURSDAY 7 APRIL 2022								

### OPEN PARADERS' COMPETITION (F003)

Open Paraders' Competition - 19 years and under 25 years (Date of birth taken as at 1 May 2022).

#### CHAMPION AND RESERVE CHAMPION OPEN PARADER

The first placegetter from each heat shall parade for this prize.

The second placegetter from the heat won by the Champion Open Parader, is then judged with the remaining first placegetters for the Reserve Champion Open Parader.

Prizes 1st \$70, 2nd \$35 and ribbons.

**The Matthew Thom Memorial Perpetual Trophy, donated by the Stock and Station Agents Association Ltd (Australian Livestock & Property Agents Association), for the Champion Open Parader.**

The **ASC Plaque**, presented to the Champion Open Parader.

<b>CONDITIONS</b>	<ul style="list-style-type: none"> <li><b>Competitors in F003 shall lead a Bull, any age.</b></li> <li>Heats shall be determined on the number of entries; ribbons shall be presented to the placegetters in each heat.</li> <li>A winner of two F003 Championships shall not be eligible for future competition in F003.</li> </ul>
<b>CLOSING DAY OF ENTRY</b>	12 NOON WEDNESDAY 6 APRIL 2022
<b>ENTRY FEE</b>	\$6
<b>JUDGING DAY</b>	THURSDAY 7 APRIL 2022

### GRAND CHAMPION PARADER STATE FINAL

The winners of F001, F002 and F003 shall parade for this prize.

Prize \$100 and ribbon.

**The Patrick Keast Memorial Perpetual Trophy, donated by Beverley & Fleur Keast, for the Grand Champion Beef Cattle Parader.**

The **ASC Plaque**, presented to the Grand Champion Parader.

<b>CONDITIONS</b>	<ul style="list-style-type: none"> <li><b>As per ASC Guidelines, in order to be eligible to proceed to the ASA National Beef Cattle Paraders' Championship, Competitors shall be 15 and under 25 years of age on 1st May in the year of the Competitors State Final, and reside in NSW.</b></li> <li><b>Competitors under the age of 18 shall be accompanied by a chaperone.</b></li> <li><b>Should the Grand Champion Parader not be of eligible age to compete for the ASA National Beef Cattle Paraders' Championship, the next placed Competitor of eligible age shall be the NSW Representative for that Competition.</b></li> <li>Competitors are ineligible to compete a second time at the ASA National Beef Cattle Paraders' Championship after winning the final of the National ASA Beef Cattle Paraders' Championship.</li> </ul>
<b>JUDGING DAY</b>	THURSDAY 7 APRIL 2022
<b>PREVIOUS WINNERS</b>	2021 - Tayla Miller 2020 - No Competition 2019 - Sam Parish 2000 - (Commencement)

## HEIFER FITTING CHALLENGE

THE HEIFER FITTING CHALLENGE is proudly supported by The Cattle Shop.

### CHAMPION HEIFER FITTING CHALLENGE

Product Prize supported by The Cattle Shop. Prize \$650

<b>CONDITIONS</b>	<ol style="list-style-type: none"> <li>1. Competitors must be 10 years and under 25 years as at 1 May 2022.</li> <li>2. The RAS Heifer Fitting Challenge is for all breeds of Beef Cattle. The participation of youth involved in all breeds should be encouraged and actively promoted. Animals must be Exhibited in the General Beef Cattle Classes to be eligible.</li> <li>3. Participants will be judged on how they prepare and present an animal for showing.</li> <li>4. Once prepared for parading, all animals must be lead using a leather show halter for final inspection.</li> <li>5. This Competition will be run according to age groups dependent on number of entries.</li> <li>6. Competitors will be required to provide the following: <ol style="list-style-type: none"> <li>a. Nominated heifer</li> <li>b. Rope halter and nose lead to secure animal to designated tie-up area</li> <li>c. Preparation equipment (in a bucket) eg brushes, spray etc</li> <li>d. Show Halters, Show cane</li> </ol> </li> <li>7. Competitors will be judged on presentation, attention to detail and WHS procedures.</li> <li>8. Competitors will have 5 minutes (warned at 3 and 4 minute intervals) to have their heifers inside the Judging Ring. Any Competitor failing to enter the Ring on the 5 minute cut off will not be judged in this part of the Competition and will return to the shed.</li> </ol>
<b>DRESS CODE</b>	Competitors will be required to wear their Breed Uniform or white dustcoat when in the Ring for the judging of this Competition.
<b>CLOSING DAY OF ENTRY</b>	12 NOON SATURDAY 9 APRIL 2022
<b>ENTRY FEE</b>	FREE
<b>JUDGING DAY</b>	SUNDAY 10 APRIL 2022

## RAS YOUTH SHOW

### CLASS YS001 - Junior Judging Class

#### CHAMPION JUNIOR JUDGING - RAS YOUTH SHOW

Product Prize supported by Oakwood Products. Prize \$50

Product Prize supported by The Cattle Shop. Prize \$100

### CLASS YS002 – Paraders' Class

#### CHAMPION PARADER - RAS YOUTH SHOW

Product Prize supported by Oakwood Products. Prize \$50

Product Prize supported by The Cattle Shop. Prize \$200

<b>CONDITIONS</b>	<ol style="list-style-type: none"> <li>1. Exhibitors must be 10 years and under 25 years as at 1 May 2022.</li> <li>2. Handlers age as at 1 May 2022. <ol style="list-style-type: none"> <li>JUNIOR: 10yrs and under 14yrs</li> <li>INTERMEDIATE: 14yrs and under 17yrs</li> <li>SENIOR: 17yrs and under 25yrs</li> </ol> </li> <li>3. An entry includes admission into both Classes: Junior Judging and Paraders.</li> <li>4. Exhibitors under 18 years must be accompanied by a parent or guardian whilst on Showground.</li> <li>5. The Application for Entry must be signed by a parent or guardian where the Exhibitor is under 18 years of age.</li> <li>6. Exhibits must have entered and competed in the General Beef Cattle Classes of the 2022 Sydney Royal Beef Cattle Competition.</li> <li>7. Age of heifers shall be 9 months and under 24 months (without a calf) as at 1 April 2022.</li> <li>8. All Exhibits must have an acceptable temperament and be broken to lead.</li> <li>9. USE OF NOSE CLIPS AND NECK STRAPS IS COMPULSORY.</li> <li>10. Inspectors nominated by the Cattle Committee will be responsible for inspection of all animals pursuant to the Regulations prior to judging. If incorrect, absent or illegible tattoos are used, the animal will be disqualified.</li> <li>11. Non-participants are not permitted to take part in the preparation of animals after registration. Any breach of this condition can lead to the handler being disqualified or the animal disqualified from judging.</li> <li>12. Management and control of the RAS Youth Show will be in the hands of the RAS Cattle Committee and their decision is final.</li> <li>13. Animals to be utilised for the Junior Judging Class will be selected at the discretion of appointed Officials.</li> </ol> <p><b>Exhibitors must enter both Classes.</b></p>
<b>DRESS CODE</b>	Competitors will be required to wear a white dustcoat, when in the Ring for the judging of this Competition.
<b>CLOSING DAY OF ENTRY</b>	12 NOON MONDAY 11 APRIL 2022
<b>ENTRY FEE</b>	\$10 per entry
<b>JUDGING DAY</b>	TUESDAY 12 APRIL 2022



## 2022 SUPREME BEEF CHAMPIONSHIPS

MONDAY 11 APRIL

### THE HORDERN PERPETUAL TROPHY

#### SUPREME BEEF BREED CHAMPIONSHIP



The Horder Perpetual Trophy, a sterling silver Punch Bowl, donated by Mr and Mrs Anthony Horder to commemorate over 100 years of continuous service to the RAS by the Horder Family. Awarded to the best pair, consisting of the Grand Champion Male and Female of each Beef Breed exhibited, excluding any breeds in Group D - Other Recognised Breeds.

A Plaque will be awarded to the winning Breed Society.

A Medallion will be awarded each year to the Owners of the male and female that makes up the winning team.

**Prize Money \$7,500 for each Exhibitor of the winning animals of the Supreme Beef Breed Championship, sponsored by Elders.**

Winners of the Horder Trophy - first presented in 1980.

1980	<b>Charolais</b> - Mandalong Investments P/L [M - Mandalong Lad & F - Mandalong Jassica]
2012	<b>Red Angus</b> - Mr Gavin & Mrs Kिरily Iseppi [M - GK 26 Federer F23] & Ms Aimee & Olivia Bolton [F - Trevone Park Whisper C11]
2013	<b>Red Angus</b> - Mr Gavin & Mrs Kिरily Iseppi [M - GK 2R Greenback G6 & F - GK Red Arabella 2T F11 (ET)]
2014	<b>Red Angus</b> - Peter Weiss Pty Ltd [M - Wollumbi Hi Star H53] & Mr Gavin & Mrs Kिरily Iseppi [F - GK Red Olivia 26 G41]
2015	<b>Angus</b> - Pine Creek Angus Stud Pty Ltd [M - PC Kodiak 5R H130 (AI) & F - PC Ms Expedition H304 (AI)]
2016	<b>Angus</b> - Killain Angus [M - Killain Alaska K18] & Ms K L Smith [F - K5X Lisa H56]
2017	<b>Red Angus</b> - RDM Angus [M - RDMG Red Solo Cup (AI)] & Mr Gavin & Mrs Kिरily Iseppi [F - GK Red Ruba 26 G40]
2018	<b>Angus</b> - Pine Creek Angus Stud Pty Ltd [M - PC H130 Kodiak M117] & Beresford Family & Scott Myers [F - Myanga Lady Louise L226]
2019	<b>Charolais</b> - Mr Steven Franco [M - Caloona Park Nugget (P) (R/F)] & Keddstock Pty Ltd [F - Moongool Fanmail 8 (R/F)]
2020	No Competition
2021	<b>Angus</b> - Mr Danny Hill [M - Hillview Quigley Q18 <sup>#</sup> ] & Pine Creek Angus Stud Pty Ltd [F - PC Miss J260 Conversion M205 <sup>SV</sup> ]

### THE URQUHART PERPETUAL TROPHY

#### SUPREME BEEF EXHIBIT



The Urquhart Perpetual Trophy, donated by The Australian Red Poll Society, NSW Region, in honour of Mr Bruce Urquhart, will be awarded to the Supreme Beef Exhibit.

The Grand Champion Male and Grand Champion Female of each breed from Group A, B, C and the Champion Male and Champion Female from Group D will be eligible to compete. The Judge will be invited to select the best animal of each sex before determining the Supreme Beef Exhibit.

A Medallion will be awarded each year to the winning Exhibitor.

**Prize Money \$12,000 for Supreme Beef Exhibit and \$3,000 for Reserve Supreme Beef Exhibit, supported by the Royal Agricultural Society of NSW.**

Winners of the Urquhart Trophy - first presented in 1999.

1999	<b>Braunvieh</b> - Tarrawarra Braunvieh Stud [Tarrawarra Glen Regina (AI) 2836 & Tarrawarra Glen Rocky (ET) 2837]
2012	<b>Poll Hereford</b> - S R & T A Crowley [Tycolah Jovial F77]
2013	<b>Charolais</b> - D & P Bondfield [Palgrove Gallivant]
2014	<b>Limousin</b> - Mr Scott Myers & Miss Samantha Beresford [Myers Lady Luck]
2015	<b>Angus</b> - Pine Creek Angus Stud Pty Ltd [PC Kodiak 5R H130 (AI)]
2016	<b>Angus</b> - Ms K L Smith [K5X Lisa H56]
2017	<b>Red Angus</b> - Mr Gavin & Mrs Kिरily Iseppi [GK Red Ruba 26 G40]
2018	<b>Hereford</b> - Warragundi Beef Company [Warragundi Minnesota (P)]
2019	<b>Charolais</b> - Keddstock Pty Ltd [Moongool Fanmail 8 (R/F)]
2020	No Competition
2021	<b>Limousin</b> - H & L Livestock & Progress Limousins [Progress Perfect Storm P5 (P) (PF)]

## RAS SUPREME BEEF INTERBREED HEIFER

The RAS of NSW Supreme Beef Interbreed Heifer is for Junior Champion Females of each breed from Group A, B and C, and first place getters from Classes 5000 and 5001 in Group D.

**Prize Money \$10,000 for Supreme Beef Interbreed Heifer, supported by the Royal Agricultural Society of NSW.**

Winners of the RAS of NSW Supreme Beef Interbreed Heifer - first presented in 2010.

2010	<b>Charolais</b> - Mr G M O'Brien [Winchester Daisy Duke D3E]
2011	<b>Limousin</b> - M T & M A Tynan [Birubi Eternity E177]
2012	<b>Red Angus</b> - Powe Family [Goondoola Miss D G02]
2013	<b>Angus</b> - Pine Creek Angus Stud P/L & Brailes Investments UK [PC Miss Shiraz H449 (AI)]
2014	<b>Shorthorn</b> - Mr David & Mrs Marion Spencer [Barvon Molenor Patent H224 (P)]
2015	<b>Angus</b> - Pine Creek Angus Stud Pty Ltd [PC Miss E99 Foreman J181]
2016	<b>Simmental</b> - Mr Gavin & Mrs Kiri Iseppi [Woonallee Razzle Dazzle K278]
2017	<b>Angus</b> - Ms K L Smith [K5X Kaharau L31]
2018	<b>Hereford</b> - Kanimbla Livestock [Kanimbla May M070 (AI) (P)]
2019	<b>Angus</b> - Yamba Angus [Yamba Keen N153 (AI)]
2020	No Competition
2021	<b>Limousin</b> - Keajura Park Limousins [Keajura Park Krystal Rose (2P) (2B) (PF)]

## THE GORDON FULLER MEMORIAL PERPETUAL TROPHY

### BREEDER'S GROUP INTERBREED



The Gordon Fuller Memorial Perpetual Trophy, donated by Pine Creek Angus Stud in memory of the late Gordon Fuller, will be awarded to the winner of the Interbreed Breeder's Group.

The Breeder's Group Interbreed is for Breeder's Group Champions of each breed from Group A and B and the Feature breed. Three animals from both sexes to be represented, bred and owned by the one Exhibitor. All animals must be entered in the general Classes and the Exhibits entered must be the Group Exhibits that have been awarded Champion from each breed.

A Medallion will be awarded each year to the winning Exhibitor.

Winners of the RAS of NSW Breeder's Group Interbreed - first awarded in 2014 and first presented in 2015.

2014	<b>Angus</b> - Pine Creek Angus Stud Pty Ltd
2015	<b>Angus</b> - Pine Creek Angus Stud Pty Ltd
2016	<b>Angus</b> - Pine Creek Angus Stud Pty Ltd
2017	<b>Angus</b> - Ms K L Smith
2018	<b>Charolais</b> - Keddstock Pty Ltd
2019	<b>Angus</b> - Tattykeel Pty Ltd
2020	No Competition
2021	<b>Angus</b> - Pine Creek Angus Stud Pty Ltd

# 2022 BEEF CATTLE CLASSES

## SIMMENTAL AUSTRALIA FEATURE SHOW

**CLASS 3900 - Female, 8 & not over 10mths**

**CLASS 3901 - Female, over 10 & not over 12mths**

**CLASS 3902 - Female, over 12 & not over 14mths**

**(S3903) - CALF CHAMPION FEMALE**

(S3903A) - Cash Prize supported by Limitless Show Supplies.  
Prize \$250

(S3903B) - Annual Trophy supported by Simmental NSW.

**(S3904) - RESERVE CALF CHAMPION FEMALE**

(S3904A) - Cash Prize supported by Designs By Lucky Clover.  
Prize \$150

**CLASS 3905 - Female, over 14 & not over 16mths**

**CLASS 3906 - Female, over 16 & not over 18mths**

**CLASS 3907 - Female, over 18 & not over 20mths**

**(S3908) - INTERMEDIATE CHAMPION FEMALE**

(S3908A) - Cash Prize supported by Settler Simmentals.  
Prize \$250

(S3908B) - Annual Trophy supported by Simmental NSW.

**(S3909) - RESERVE INTERMEDIATE CHAMPION FEMALE**

(S3909A) - Cash Prize supported by D J Mitchell & Family.  
Prize \$150

**(S3910) - JUNIOR CHAMPION FEMALE**

Calf Champion Female and Intermediate Champion Female are both eligible to compete for Junior Champion Female, with only one animal representing the breed for RAS Supreme Beef Interbreed Heifer.

(S3910A) - Cash Prize supported by Limitless Show Supplies.  
Prize \$250

(S3910B) - Annual Trophy supported by Simmental NSW.

**CLASS 3911 - Two Females, not over 20mths**

(S3911A) - Cash Prize supported by Swinburne Simmentals.  
Prize 1st \$500

(S3911B) - Annual Trophy supported by Simmental NSW.

**CLASS 3912 - Female, over 20 & not over 24mths**

**CLASS 3913 - Female, over 24 & not over 30mths**

**CLASS 3914 - Female, over 30 & not over 36mths**

**CLASS 3915 - Female, over 36 & not over 48mths**

**CLASS 3916 - Female, over 48mths**

**(S3917) - SENIOR CHAMPION FEMALE**

(S3917A) - Cash Prize supported by Springside Simmentals.  
Prize \$250

(S3917B) - Annual Trophy supported by Simmental NSW.

**(S3918) - RESERVE SENIOR CHAMPION FEMALE**

(S3918A) - Cash Prize supported by D J Mitchell & Family.  
Prize \$150

**(S3919) - GRAND CHAMPION FEMALE**

(S3919A) - Cash Prize supported by Valley Creek Simmentals.  
Prize \$500

(S3919B) - Annual Trophy supported by Simmental Australia.

**CLASS 3920 - Bull, 8 & not over 10mths**

**CLASS 3921 - Bull, over 10 & not over 12mths**

**CLASS 3922 - Bull, over 12 & not over 14mths**

**(S3923) - CALF CHAMPION BULL**

(S3923A) - Cash Prize supported by Limitless Show Supplies.  
Prize \$250

(S3923B) - Annual Trophy supported by Simmental NSW.

**(S3924) - RESERVE CALF CHAMPION BULL**

(S3924A) - Cash Prize supported by Lucky Clover Simmentals.  
Prize \$150

**CLASS 3925 - Bull, over 14 & not over 16mths**

**CLASS 3926 - Bull, over 16 & not over 18mths**

**CLASS 3927 - Bull, over 18 & not over 20mths**

**(S3928) - INTERMEDIATE CHAMPION BULL**

(S3928A) - Cash Prize supported by Limitless Show Supplies.  
Prize \$250

(S3928B) - Annual Trophy supported by Simmental NSW.

**(S3929) - RESERVE INTERMEDIATE CHAMPION BULL**

(S3929A) - Cash Prize supported by D J Mitchell & Family.  
Prize \$150

**CLASS 3930 - Two Bulls, not over 20mths**

(S3930A) - Cash Prize supported by Southern Black Simmentals.  
Prize 1st \$500

(S3930B) - Annual Trophy supported by Simmental NSW.

**CLASS 3931 - Bull, over 20 & not over 22mths**

**CLASS 3932 - Bull, over 22 & not over 24mths**

**CLASS 3933 - Bull, over 24 & not over 30mths**

**CLASS 3934 - Bull, over 30 & not over 36mths**

**(S3935) - SENIOR CHAMPION BULL**

(S3935A) - Cash Prize supported by Cannon Dee Simmental Stud.  
Prize \$250

(S3935B) - Annual Trophy supported by Simmental NSW.

**(S3936) - RESERVE SENIOR CHAMPION BULL**

(S3936A) - Cash Prize supported by D J Mitchell & Family.  
Prize \$150

**(S3937) - GRAND CHAMPION BULL**

(S3937A) - Cash Prize supported by Elite Cattle Co. Prize \$500

(S3937B) - Annual Trophy supported by Simmental Australia.

**CLASS 3938 - Sire's Progeny**

(S3938A) - Cash Prize supported by LNA Livestock. Prize 1st \$500

(S3938B) - Annual Trophy supported by Simmental NSW.

**CLASS 3939 - Dam's Progeny**

(S3939A) - Cash Prize supported by Craven Creek Simmentals.  
Prize 1st \$500

(S3939B) - Annual Trophy supported by Simmental NSW.

**CLASS 3940 - Breeder's Group**

(S3940A) - Cash Prize supported by Mala-Daki Simmentals.  
Prize 1st \$500

(S3940B) - Annual Trophy supported by Simmental NSW.

**(S3941) - BEST EXHIBIT**

(S3941A) - RAS of NSW Award of Excellence Medallion for Best Simmental Exhibit.

(S3941B) - Cash Prize supported by Woonallee Simmentals.  
Prize \$2,500

**(S3942) - MOST SUCCESSFUL SIMMENTAL AUSTRALIA  
FEATURE SHOW EXHIBITOR**

**(S3943) - BEST MAINTAINED SIMMENTAL AUSTRALIA  
FEATURE SHOW TEAM, two to five head**

**(S3944) - BEST MAINTAINED SIMMENTAL AUSTRALIA  
FEATURE SHOW TEAM, over five head**

**ANGUS (Group A)****CLASS 1 - Female, 9 & not over 12mths****CLASS 2 - Female, over 12 & not over 14mths****CLASS 3 - Female, over 14 & not over 16mths****CLASS 4 - Female, over 16 & not over 18mths****CLASS 5 - Female, over 18 & not over 19mths****CLASS 6 - Female, over 19 & not over 20mths****(S007) - JUNIOR CHAMPION FEMALE***(S007A) - Cash Prize supported by Angus NSW. Prize \$100**(S007B) - Medallion supported by Angus Australia.***(S008) - RESERVE JUNIOR CHAMPION FEMALE***(S008A) - Cash Prize supported by Angus NSW. Prize \$50***CLASS 9 - Female, over 20 & not over 24mths****CLASS 10 - Female, over 24 & not over 30mths****CLASS 11 - Female, over 30 & not over 36mths****CLASS 12 - Female, over 36mths****(S013) - SENIOR CHAMPION FEMALE***(S013A) - Cash Prize supported by Angus NSW. Prize \$100**(S013B) - Medallion supported by Angus Australia.***(S014) - RESERVE SENIOR CHAMPION FEMALE***(S014A) - Cash Prize supported by Angus NSW. Prize \$50***(S015) - GRAND CHAMPION FEMALE***(S015A) - Cash Prize supported by Elders. Prize \$500**(S015B) - Ribbon supported by Angus Australia.**(S015C) - Medallion for the Herdsman attending the Grand Champion Female, supported by Angus Australia.***CLASS 16 - Bull, 9 & not over 12mths****CLASS 17 - Bull, over 12 & not over 14mths****CLASS 18 - Bull, over 14 & not over 16mths****CLASS 19 - Bull, over 16 & not over 18mths****CLASS 20 - Bull, over 18 & not over 19mths****CLASS 21 - Bull, over 19 & not over 20mths****(S022) - JUNIOR CHAMPION BULL****(S022A) - G T Reid Memorial Perpetual Cup for the Junior Champion Bull, donated by Kahlua Pastoral Co., in memory of the late Capt George T Reid.***(S022B) - Cash Prize supported by Angus NSW. Prize \$100**(S022C) - Medallion supported by Angus Australia.***(S023) - RESERVE JUNIOR CHAMPION BULL***(S023A) - Cash Prize supported by Angus NSW. Prize \$50***CLASS 24 - Bull, over 20 & not over 24mths****CLASS 25 - Bull, over 24 & not over 30mths****CLASS 26 - Bull, over 30 & not over 36mths****(S027) - SENIOR CHAMPION BULL****(S027A) - The CS Gordon Perpetual Trophy for the Senior Champion Bull, donated by Glengowan Angus in memory of the late Stuart Gordon.***(S027B) - Cash Prize supported by Angus NSW. Prize \$100**(S027C) - Medallion supported by Angus Australia.***(S028) - RESERVE SENIOR CHAMPION BULL***(S028A) - Cash Prize supported by Angus NSW. Prize \$50***(S029) - GRAND CHAMPION BULL****(S029A) - Fordhouse Perpetual Bowl for the Grand Champion Bull, originally donated by William F Reid.***(S029B) - Cash Prize supported by Elders. Prize \$500**(S029C) - Ribbon supported by Angus Australia.**(S029D) - Medallion for the Herdsman attending the Grand Champion Bull, supported by Angus Australia.***CLASS 30 - Two Bulls, not over 24mths****(S030A) - The Abington Perpetual Trophy for the winning Two Bulls, not over 24 months, donated by the Estate of the late Norman L Forster, for Competition at the 1950 and future Sydney Royal Easter Shows. In the absence of a Sydney Royal Easter Show the tray shall be allocated for Competition at some other Show, Exhibition, or Sales, promoted, sponsored, or approved by the RAS.***(S030B) - Cash Prize supported by Angus NSW. Prize 1st \$100***CLASS 31 - Sire's Progeny****(S031A) - The Andrew Reid Perpetual Trophy for the winning Sire's Progeny, originally donated by Narrangullen Angus Stud and re-donated by Pine Creek Angus Stud Pty Ltd, as a Perpetual Trophy.***(S031B) - Cash Prize supported by Angus NSW. Prize 1st \$100***CLASS 32 - Dam's Progeny***(S032A) - Cash Prize supported by Angus NSW. Prize 1st \$100***CLASS 33 - Breeder's Group****(S034) - BEST EXHIBIT****(S034A) - The Peter Duddy Perpetual Trophy for the Best Exhibit, donated by and on behalf of the family of the late Peter Duddy, Mooki River Angus Stud, in recognition of his service to the Beef Cattle Industry.***(S034B) - RAS of NSW Award of Excellence Medallion for Best Angus Exhibit.**(S034C) - Ribbon supported by Angus New Zealand.***(S035) - MOST SUCCESSFUL ANGUS EXHIBITOR***(S035A) - Medallion supported by Angus Australia.***(S036) - BEST MAINTAINED ANGUS TEAM, two to five head****(S037) - BEST MAINTAINED ANGUS TEAM, over five head****AUSTRALIAN LOWLINE (Group C)****CLASS 100 - Female, 9 & not over 12mths****CLASS 101 - Female, over 12 & not over 16mths****CLASS 102 - Female, over 16 & not over 20mths****(S103) - JUNIOR CHAMPION FEMALE****(S104) - RESERVE JUNIOR CHAMPION FEMALE****CLASS 105 - Female, over 20 & not over 24mths****CLASS 106 - Female, over 24 & not over 30mths****CLASS 107 - Female, over 30mths****(S108) - SENIOR CHAMPION FEMALE****(S109) - RESERVE SENIOR CHAMPION FEMALE****(S110) - GRAND CHAMPION FEMALE****CLASS 111 - Bull, 9 & not over 12mths****CLASS 112 - Bull, over 12 & not over 16mths****CLASS 113 - Bull, over 16 & not over 20mths****(S114) - JUNIOR CHAMPION BULL****(S115) - RESERVE JUNIOR CHAMPION BULL****CLASS 116 - Bull, over 20 & not over 24mths****CLASS 117 - Bull, over 24 & not over 30mths****CLASS 118 - Bull, over 30 & not over 36mths****(S119) - SENIOR CHAMPION BULL****(S120) - RESERVE SENIOR CHAMPION BULL****(S121) - GRAND CHAMPION BULL**

**CLASS 122 - Two Bulls, not over 24mths**

**CLASS 123 - Sire or Dam's Progeny**

**(S124) - BEST EXHIBIT**

**(S124A) - The Roger Barlow Perpetual Trophy for the Best Exhibit, donated by Betty and Brian Higgins.**

*(S124B) - RAS of NSW Award of Excellence Medallion for Best Australian Lowline Exhibit.*

**(S125) - MOST SUCCESSFUL AUSTRALIAN LOWLINE EXHIBITOR**

**(S126) - BEST MAINTAINED AUSTRALIAN LOWLINE TEAM, two to five head**

**(S127) - BEST MAINTAINED AUSTRALIAN LOWLINE TEAM, over five head**

## **BRAHMAN (Group C)**

**CLASS 800 - Female, 9 & not over 12mths**

**CLASS 801 - Female, over 12 & not over 16mths**

**CLASS 802 - Female, over 16 & not over 20mths**

**(S803) - JUNIOR CHAMPION FEMALE**

**(S804) - RESERVE JUNIOR CHAMPION FEMALE**

**CLASS 805 - Female, over 20 & not over 30mths**

**CLASS 806 - Female, over 30mths**

**(S807) - SENIOR CHAMPION FEMALE**

**(S808) - RESERVE SENIOR CHAMPION FEMALE**

**(S809) - GRAND CHAMPION FEMALE**

*(S809A) - Cash Prize supported by Dr George Jacobs of Mogul Brahman Stud. Prize \$150*

**CLASS 810 - Bull, 9 & not over 12mths**

**CLASS 811 - Bull, over 12 & not over 16mths**

**CLASS 812 - Bull, over 16 & not over 20mths**

**(S813) - JUNIOR CHAMPION BULL**

**(S814) - RESERVE JUNIOR CHAMPION BULL**

**CLASS 815 - Bull, over 20 & not over 30mths**

**CLASS 816 - Bull, over 30 & not over 36mths**

**(S817) - SENIOR CHAMPION BULL**

**(S818) - RESERVE SENIOR CHAMPION BULL**

**(S819) - GRAND CHAMPION BULL**

**CLASS 820 - Two Bulls, not over 24mths**

**CLASS 821 - Sire or Dam's Progeny**

**(S822) - BEST EXHIBIT**

*(S822A) - RAS of NSW Award of Excellence Medallion for Best Brahman Exhibit.*

**(S823) - MOST SUCCESSFUL BRAHMAN EXHIBITOR**

**(S824) - BEST MAINTAINED BRAHMAN TEAM, two to five head**

**(S825) - BEST MAINTAINED BRAHMAN TEAM, over five head**

## **CHAROLAIS (Group A)**

**CLASS 1300 - Female, 9 & not over 12mths**

**CLASS 1301 - Female, over 12 & not over 14mths**

**CLASS 1302 - Female, over 14 & not over 16mths**

**CLASS 1303 - Female, over 16 & not over 18mths**

**CLASS 1304 - Female, over 18 & not over 19mths**

**CLASS 1305 - Female, over 19 & not over 20mths**

**(S1306) - JUNIOR CHAMPION FEMALE**

**(S1307) - RESERVE JUNIOR CHAMPION FEMALE**

**CLASS 1308 - Female, over 20 & not over 24mths**

**CLASS 1309 - Female, over 24 & not over 30mths**

**CLASS 1310 - Female, over 30 & not over 36mths**

**CLASS 1311 - Female, over 36mths**

**(S1312) - SENIOR CHAMPION FEMALE**

**(S1313) - RESERVE SENIOR CHAMPION FEMALE**

**(S1314) - GRAND CHAMPION FEMALE**

**CLASS 1315 - Bull, 9 & not over 12mths**

**CLASS 1316 - Bull, over 12 & not over 14mths**

**CLASS 1317 - Bull, over 14 & not over 16mths**

**CLASS 1318 - Bull, over 16 & not over 18mths**

**CLASS 1319 - Bull, over 18 & not over 19mths**

**CLASS 1320 - Bull, over 19 & not over 20mths**

**(S1321) - JUNIOR CHAMPION BULL**

**(S1322) - RESERVE JUNIOR CHAMPION BULL**

**CLASS 1323 - Bull, over 20 & not over 24mths**

**CLASS 1324 - Bull, over 24 & not over 30mths**

**CLASS 1325 - Bull, over 30 & not over 36mths**

**(S1326) - SENIOR CHAMPION BULL**

**(S1327) - RESERVE SENIOR CHAMPION BULL**

**(S1328) - GRAND CHAMPION BULL**

**CLASS 1329 - Two Bulls, not over 24mths**

**CLASS 1330 - Sire's Progeny**

**CLASS 1331 - Dam's Progeny**

**CLASS 1332 - Breeder's Group**

**(S1333) - BEST EXHIBIT**

*(S1333A) - RAS of NSW Award of Excellence Medallion for Best Charolais Exhibit.*

**(S1334) - MOST SUCCESSFUL CHAROLAIS EXHIBITOR**

**(S1335) - BEST MAINTAINED CHAROLAIS TEAM, two to five head**

**(S1336) - BEST MAINTAINED CHAROLAIS TEAM, over five head**

## **DEVON (Group C)**

**CLASS 1500 - Female, 9 & not over 12mths**

**CLASS 1501 - Female, over 12 & not over 16mths**

**CLASS 1502 - Female, over 16 & not over 20mths**

**(S1503) - JUNIOR CHAMPION FEMALE**

**(S1503A) - The Atlantic Perpetual Trophy for the Junior Champion Female, donated by Major M S B Vernon, MVO.**

**(S1504) - RESERVE JUNIOR CHAMPION FEMALE**

**CLASS 1505 - Female, over 20 & not over 30mths**

**CLASS 1506 - Female, over 30mths**

**(S1507) - SENIOR CHAMPION FEMALE**

**(S1508) - RESERVE SENIOR CHAMPION FEMALE**

**(S1509) - GRAND CHAMPION FEMALE**

**(S1509A) - The Stanbury Perpetual Tankard for the Grand Champion Female, donated by W Stanbury.**

**CLASS 1510 - Bull, 9 & not over 12mths**

**CLASS 1511 - Bull, over 12 & not over 16mths**

**CLASS 1512 - Bull, over 16 & not over 20mths**

**(S1513) - JUNIOR CHAMPION BULL**

**(S1513A) - The John Anderson Perpetual Trophy for the Junior Champion Bull, donated by the family of the late John Anderson.**

**(S1514) - RESERVE JUNIOR CHAMPION BULL**

**CLASS 1515 - Bull, over 20 & not over 30mths**

**CLASS 1516 - Bull, over 30 & not over 36mths**

**(S1517) - SENIOR CHAMPION BULL**

**(S1517A) - The Andrew Gibson Memorial Perpetual Trophy for the Senior Champion Bull, donated by the family of the late Andrew Gibson in recognition of his service to the Breed and to the RAS of NSW.**

**(S1518) - RESERVE SENIOR CHAMPION BULL**

**(S1519) - GRAND CHAMPION BULL**

**CLASS 1520 - Two Bulls, not over 24mths**

**CLASS 1521 - Sire or Dam's Progeny**

**(S1522) - BEST EXHIBIT**

**(S1522A) - The Devon Cattle Breeders Perpetual Challenge Cup for the Best Exhibit, donated by the Devon Cattle Breeder's Society of England.**

**(S1522B) - The Thomas A Holt Perpetual Prize for the Best Exhibit, being interest derived from capital lodged with the RAS, donated by the Tondara Devon Stud as a memorial to the late Thomas A Holt, to enable this prize to be competed for in perpetuity.**

A medallion will be awarded each year to the winning Exhibitor.

*(S1522C) - RAS of NSW Award of Excellence Medallion for Best Devon Exhibit.*

**(S1523) - MOST SUCCESSFUL DEVON EXHIBITOR**

**(S1524) - BEST MAINTAINED DEVON TEAM, two to five head**

**(S1525) - BEST MAINTAINED DEVON TEAM, over five head**

## **HEREFORD (Group A)**

**CLASS 2100 - Female, 9 & not over 12mths**

**CLASS 2101 - Female, over 12 & not over 15mths**

**CLASS 2102 - Female, over 15 & not over 18mths**

**CLASS 2103 - Female, over 18 & not over 19mths**

**CLASS 2104 - Female, over 19 & not over 20mths**

**(S2105) - JUNIOR CHAMPION FEMALE**

**(S2105A) - The F D McMaster Memorial Perpetual Trophy for the Junior Champion Female, donated by the Estate of the late Miss T McMaster.**

**(S2106) - RESERVE JUNIOR CHAMPION FEMALE**

**CLASS 2107 - Female, over 20 & not over 24mths**

**CLASS 2108 - Female, over 24 & not over 30mths**

**CLASS 2109 - Female, over 30 & not over 36mths**

**CLASS 2110 - Female, over 36mths**

**(S2111) - SENIOR CHAMPION FEMALE**

**(S2112) - RESERVE SENIOR CHAMPION FEMALE**

**(S2113) - GRAND CHAMPION FEMALE**

**(S2113A) - The Viscount Hereford Perpetual Trophy for the Grand Champion Female, donated by The Right Honourable The Viscount Hereford.**

*(S2113B) - The Allen Galloway Annual Trophy supported by the Galloway Family, Cootharaba Hereford Stud.*

**CLASS 2114 - Bull, 9 & not over 12mths**

**CLASS 2115 - Bull, over 12 & not over 15mths**

**CLASS 2116 - Bull, over 15 & not over 18mths**

**CLASS 2117 - Bull, over 18 & not over 19mths**

**CLASS 2118 - Bull, over 19 & not over 20mths**

**(S2119) - JUNIOR CHAMPION BULL**

**(S2119A) - The L F Leake Perpetual Trophy for the Junior Champion Bull, donated by the Australian Poll Hereford Society Ltd.**

*(S2119B) - The Herbert Field Memorial Cash Prize supported by Herefords Australia Ltd. Prize \$200*

**(S2120) - RESERVE JUNIOR CHAMPION BULL**

**CLASS 2121 - Bull, over 20 & not over 24mths.**

**CLASS 2122 - Bull, over 24 & not over 30mths**

**CLASS 2123 - Bull, over 30 & not over 36mths**

**(S2124) - SENIOR CHAMPION BULL**

*(S2124A) - Cash Prize supported by the late William McIlraith. Prize \$200*

**(S2125) - RESERVE SENIOR CHAMPION BULL**

**(S2126) - GRAND CHAMPION BULL**

**(S2126A) - The Viscount Hereford Perpetual Trophy for the Grand Champion Bull, donated by The Right Honourable The Viscount Hereford.**

*(S2126B) - The Golf Hill Annual Trophy supported by Mrs J Biddlecombe, Golf Hill.*

**CLASS 2127 - Two Bulls, not over 24mths**

**CLASS 2128 - Sire's Progeny**

**CLASS 2129 - Dam's Progeny**

**CLASS 2130 - Breeder's Group**

**(S2131) - BEST EXHIBIT**

**(S2131A) - The Canada Perpetual Cup for Best Exhibit, donated by the Canadian Hereford Association.**

*(S2131B) - RAS of NSW Award of Excellence Medallion for Best Hereford Exhibit.*

**(S2132) - MOST SUCCESSFUL HEREFORD EXHIBITOR**

**(S2132A) - The H R "Bubbles" Field Perpetual Trophy for the Most Successful Hereford Exhibitor, donated by Mr Michael Field and supported by the Heritage Committee of the RAS of NSW. Mrs Field showed in the Hereford Section for over 50 years and in 2002 made a substantial donation to the Archive of the RAS.**

**(S2133) - BEST MAINTAINED HEREFORD TEAM, two to five head**

**(S2134) - BEST MAINTAINED HEREFORD TEAM, over five head**

## **LIMOUSIN (Group A)**

**CLASS 2300 - Female, 9 & not over 12mths**

**CLASS 2301 - Female, over 12 & not over 14mths**

**CLASS 2302 - Female, over 14 & not over 16mths**

**CLASS 2303 - Female, over 16 & not over 18mths**

**CLASS 2304 - Female, over 18 & not over 19mths**

**CLASS 2305 - Female, over 19 & not over 20mths**

**(S2306) - JUNIOR CHAMPION FEMALE**

*(S2306A) - Annual Trophy supported by Michelle Fairall - Micanker Livestock.*

**(S2307) - RESERVE JUNIOR CHAMPION FEMALE**

**CLASS 2308 - Female, over 20 & not over 24mths**

**CLASS 2309 - Female, over 24 & not over 30mths**

**CLASS 2310 - Female, over 30 & not over 36mths**

**CLASS 2311 - Female, over 36mths**

**(S2312) - SENIOR CHAMPION FEMALE**

**(S2313) - RESERVE SENIOR CHAMPION FEMALE**

**(S2314) - GRAND CHAMPION FEMALE**

CLASS 2315 - Bull, 9 & not over 12mths

CLASS 2316 - Bull, over 12 & not over 14mths

CLASS 2317 - Bull, over 14 & not over 16mths

CLASS 2318 - Bull, over 16 & not over 18mths

CLASS 2319 - Bull, over 18 & not over 19mths

CLASS 2320 - Bull, over 19 & not over 20mths

(S2321) - JUNIOR CHAMPION BULL

(S2322) - RESERVE JUNIOR CHAMPION BULL

CLASS 2323 - Bull, over 20 & not over 24mths

CLASS 2324 - Bull, over 24 & not over 30mths

CLASS 2325 - Bull, over 30 & not over 36mths

(S2326) - SENIOR CHAMPION BULL

(S2327) - RESERVE SENIOR CHAMPION BULL

(S2328) - GRAND CHAMPION BULL

CLASS 2329 - Two Bulls, not over 24mths

CLASS 2330 - Sire's Progeny

CLASS 2331 - Dam's Progeny

CLASS 2332 - Breeder's Group

(S2333) - BEST EXHIBIT

(S2333A) - RAS of NSW Award of Excellence Medallion for Best Limousin Exhibit.

(S2334) - MOST SUCCESSFUL LIMOUSIN EXHIBITOR

(S2335) - BEST MAINTAINED LIMOUSIN TEAM, two to five head

(S2336) - BEST MAINTAINED LIMOUSIN TEAM, over five head

## **MURRAY GREY (Group B)**

CLASS 2800 - Female, 9 & not over 12mths

CLASS 2801 - Female, over 12 & not over 16mths

CLASS 2802 - Female, over 16 & not over 20mths

(S2803) - JUNIOR CHAMPION FEMALE

(S2804) - RESERVE JUNIOR CHAMPION FEMALE

CLASS 2805 - Female, over 20 & not over 24mths

CLASS 2806 - Female, over 24 & not over 30mths

CLASS 2807 - Female, over 30mths

(S2808) - SENIOR CHAMPION FEMALE

(S2809) - RESERVE SENIOR CHAMPION FEMALE

(S2810) - GRAND CHAMPION FEMALE

(S2810A) - The Manooka Perpetual Trophy for the Grand Champion Female, donated by Bruce and Keith Watts, founders of the Manooka Murray Grey Stud.

(S2810B) - Medallion supported by Murray Grey Beef Cattle Society.

CLASS 2811 - Bull, 9 & not over 12mths

CLASS 2812 - Bull, over 12 & not over 16mths

CLASS 2813 - Bull, over 16 & not over 20mths

(S2814) - JUNIOR CHAMPION BULL

(S2815) - RESERVE JUNIOR CHAMPION BULL

CLASS 2816 - Bull, over 20 & not over 24mths

CLASS 2817 - Bull, over 24 & not over 30mths

CLASS 2818 - Bull, over 30 & not over 36mths

(S2819) - SENIOR CHAMPION BULL

(S2819A) - Annual Trophy supported by Fourways Park Murray Greys - K & A Fairall.

(S2820) - RESERVE SENIOR CHAMPION BULL

(S2821) - GRAND CHAMPION BULL

(S2821A) - The M S Traynor Perpetual Trophy for the Grand Champion Bull, donated by M Traynor.

(S2821B) - Medallion supported by Murray Grey Beef Cattle Society.

CLASS 2822 - Two Bulls, not over 24mths

CLASS 2823 - Sire or Dam's Progeny

CLASS 2824 - Breeder's Group

(S2825) - BEST EXHIBIT

(S2825A) - RAS of NSW Award of Excellence Medallion for Best Murray Grey Exhibit.

(S2826) - MOST SUCCESSFUL MURRAY GREY EXHIBITOR

(S2827) - BEST MAINTAINED MURRAY GREY TEAM, two to five head

(S2828) - BEST MAINTAINED MURRAY GREY TEAM, over five head

## **RED ANGUS (Group B)**

CLASS 3200 - Female, 9 & not over 12mths

CLASS 3201 - Female, over 12 & not over 16mths

CLASS 3202 - Female, over 16 & not over 20mths

(S3203) - JUNIOR CHAMPION FEMALE

(S3204) - RESERVE JUNIOR CHAMPION FEMALE

CLASS 3205 - Female, over 20 & not over 24mths

CLASS 3206 - Female, over 24 & not over 30mths

CLASS 3207 - Female, over 30mths

(S3208) - SENIOR CHAMPION FEMALE

(S3209) - RESERVE SENIOR CHAMPION FEMALE

(S3210) - GRAND CHAMPION FEMALE

CLASS 3211 - Bull, 9 & not over 12mths

CLASS 3212 - Bull, over 12 & not over 16mths

CLASS 3213 - Bull, over 16 & not over 20mths

(S3214) - JUNIOR CHAMPION BULL

(S3215) - RESERVE JUNIOR CHAMPION BULL

CLASS 3216 - Bull, over 20 & not over 24mths

CLASS 3217 - Bull, over 24 & not over 30mths

CLASS 3218 - Bull, over 30 & not over 36mths

(S3219) - SENIOR CHAMPION BULL

(S3220) - RESERVE SENIOR CHAMPION BULL

(S3221) - GRAND CHAMPION BULL

CLASS 3222 - Two Bulls, not over 24mths

CLASS 3223 - Sire or Dam's Progeny

CLASS 3224 - Breeder's Group

(S3225) - BEST EXHIBIT

(S3225A) - RAS of NSW Award of Excellence Medallion for Best Red Angus Exhibit.

(S3226) - MOST SUCCESSFUL RED ANGUS EXHIBITOR

(S3227) - BEST MAINTAINED RED ANGUS TEAM, two to five head

(S3228) - BEST MAINTAINED RED ANGUS TEAM, over five head

## **RED POLL (Group C)**

CLASS 3300 - Female, 9 & not over 12mths

CLASS 3301 - Female, over 12 & not over 16mths

CLASS 3302 - Female, over 16 & not over 20mths

(S3303) - JUNIOR CHAMPION FEMALE

(S3303A) - Cash Prize supported by Garrick Mulcahy. Prize \$150



**(S3304) - RESERVE JUNIOR CHAMPION FEMALE***(S3304A) - Cash Prize supported by Jackpot Red Polls. Prize \$75***CLASS 3305 - Female, over 20 & not over 30mths****CLASS 3306 - Female, over 30mths****(S3307) - SENIOR CHAMPION FEMALE***(S3307A) - Cash Prize supported by RJ & SD Wilkinson - Baladeen Red Polls. Prize \$150***(S3308) - RESERVE SENIOR CHAMPION FEMALE***(S3308A) - Cash Prize supported by Jackpot Red Polls. Prize \$75***(S3309) - GRAND CHAMPION FEMALE***(S3309A) - The Bill Coghlan Memorial Cash Prize supported by Ian & Jill Coghlan - Eurimbla Red Polls. Prize \$150***CLASS 3310 - Bull, 9 & not over 14mths****CLASS 3311 - Bull, over 14 & not over 20mths****(S3312) - JUNIOR CHAMPION BULL***(S3312A) - Cash Prize supported by Trevor & Gerardine Hill - Ingleden Red Poll Stud. Prize \$150***(S3313) - RESERVE JUNIOR CHAMPION BULL***(S3313A) - Cash Prize supported by A & C Couch - Nyalndee Red Poll Stud. Prize \$75***CLASS 3314 - Bull, over 20 & not over 30mths****CLASS 3315 - Bull, over 30 & not over 36mths****(S3316) - SENIOR CHAMPION BULL***(S3316A) - Cash Prize supported by M & C Smith - Belault Red Poll Stud. Prize \$150***(S3317) - RESERVE SENIOR CHAMPION BULL***(S3317A) - Cash Prize supported by A & C Couch - Nyalndee Red Poll Stud. Prize \$75***(S3318) - GRAND CHAMPION BULL****(S3318A) - The Brigadier G S Hurst Perpetual Prize for the Grand Champion Bull, being interest derived from capital lodged with the RAS, by Mrs Mary Hurst, to enable this Trophy to be competed for in perpetuity as a memorial to the late Brig. G S Hurst, DSO, OBE.**

A medallion will be awarded each year to the winning Exhibitor.

**CLASS 3319 - Two Bulls, not over 24mths****CLASS 3320 - Sire or Dam's Progeny****(S3321) - BEST EXHIBIT****(S3321A) - The W K Cowlshaw Perpetual Trophy for the Best Exhibit, donated by the family of the late W K Cowlshaw (founder of the Arrow Red Poll Stud).***(S3321B) - RAS of NSW Award of Excellence Medallion for Best Red Poll Exhibit.***(S3322) - MOST SUCCESSFUL RED POLL EXHIBITOR***(S3322A) - Cash Prize supported by Australian Red Poll Society. Prize \$100***(S3323) - BEST MAINTAINED RED POLL TEAM, two to five head****(S3324) - BEST MAINTAINED RED POLL TEAM, over five head***(S3325) - Cash Prize for JUNIOR HANDLER, under 25 years judged most competent on the day, supported by Australian Red Poll Society. Prize \$50***SANTA GERTRUDIS (Group B)****CLASS 3700 - Female, 9 & not over 12mths****CLASS 3701 - Female, over 12 & not over 16mths****CLASS 3702 - Female, over 16 & not over 20mths****(S3703) - JUNIOR CHAMPION FEMALE****(S3704) - RESERVE JUNIOR CHAMPION FEMALE****CLASS 3705 - Female, over 20 & not over 24mths****CLASS 3706 - Female, over 24 & not over 30mths****CLASS 3707 - Female, over 30mths****(S3708) - SENIOR CHAMPION FEMALE****(S3709) - RESERVE SENIOR CHAMPION FEMALE****(S3710) - GRAND CHAMPION FEMALE****CLASS 3711 - Bull, 9 & not over 12mths****CLASS 3712 - Bull, over 12 & not over 16mths****CLASS 3713 - Bull, over 16 & not over 18mths****CLASS 3714 - Bull, over 18 & not over 20mths****(S3715) - JUNIOR CHAMPION BULL***(S3715A) - The Alf Smith Memorial Annual Trophy & Product Prize supported by Barraba Santa Gertrudis Stud. Prize \$500***(S3716) - RESERVE JUNIOR CHAMPION BULL****CLASS 3717 - Bull, over 20 & not over 24mths****CLASS 3718 - Bull, over 24 & not over 30mths****CLASS 3719 - Bull, over 30 & not over 36mths****(S3720) - SENIOR CHAMPION BULL****(S3721) - RESERVE SENIOR CHAMPION BULL****(S3722) - GRAND CHAMPION BULL***(S3722A) - Annual Trophy supported by John & Marie Bolster.***CLASS 3723 - Two Bulls, not over 24mths****CLASS 3724 - Sire or Dam's Progeny****CLASS 3725 - Breeder's Group****(S3726) - BEST EXHIBIT***(S3726A) - RAS of NSW Award of Excellence Medallion for Best Santa Gertrudis Exhibit.***(S3727) - MOST SUCCESSFUL SANTA GERTRUDIS EXHIBITOR***(S3727A) - The SGBA Prize Voucher supported by Santa Gertrudis Breeders' (Aust) Association. Prize \$150***(S3728) - BEST MAINTAINED SANTA GERTRUDIS TEAM, two to five head****(S3729) - BEST MAINTAINED SANTA GERTRUDIS TEAM, over five head****SHORTHORNS (Group A)****CLASS 3800 - Female, 9 & not over 12mths****CLASS 3801 - Female, over 12 & not over 15mths****CLASS 3802 - Female, over 15 & not over 18mths****CLASS 3803 - Female, over 18 & not over 19mths****CLASS 3804 - Female, over 19 & not over 20mths****(S3805) - JUNIOR CHAMPION FEMALE****(S3806) - RESERVE JUNIOR CHAMPION FEMALE****CLASS 3807 - Female, over 20 & not over 24mths****CLASS 3808 - Female, over 24 & not over 30mths****CLASS 3809 - Female, over 30 & not over 36mths****CLASS 3810 - Female, over 36mths****(S3811) - SENIOR CHAMPION FEMALE****(S3812) - RESERVE SENIOR CHAMPION FEMALE****(S3813) - GRAND CHAMPION FEMALE****(S3813A) - The E E D White Memorial Perpetual Trophy for the Grand Champion Female, donated by G W N and Mrs Bassingthwaighe.****CLASS 3814 - Bull, 9 & not over 12mths****CLASS 3815 - Bull, over 12 & not over 15mths****CLASS 3816 - Bull, over 15 & not over 18mths****CLASS 3817 - Bull, over 18 & not over 19mths**



CLASS 3818 - Bull, over 19 & not over 20mths  
 (S3819) - JUNIOR CHAMPION BULL  
 (S3820) - RESERVE JUNIOR CHAMPION BULL  
 CLASS 3821 - Bull, over 20 & not over 24mths  
 CLASS 3822 - Bull, over 24 & not over 30mths  
 CLASS 3823 - Bull, over 30 & not over 36mths  
 (S3824) - SENIOR CHAMPION BULL  
 (S3825) - RESERVE SENIOR CHAMPION BULL  
 (S3826) - GRAND CHAMPION BULL  
 CLASS 3827 - Two Bulls, not over 24mths  
 CLASS 3828 - Sire's Progeny  
 CLASS 3829 - Dam's Progeny  
 CLASS 3830 - Breeder's Group  
 (S3831) - BEST EXHIBIT

(S3831A) - American Polled Shorthorn Society Challenge Perpetual Trophy for the Best Exhibit, donated by The American Polled Shorthorn Society.

(S3831B) - RAS of NSW Award of Excellence Medallion for Best Shorthorn Exhibit.

(S3832) - MOST SUCCESSFUL SHORTHORN EXHIBITOR  
 (S3833) - BEST MAINTAINED SHORTHORN TEAM, two to five head  
 (S3834) - BEST MAINTAINED SHORTHORN TEAM, over five head

### **SPECKLE PARK (Group A)**

CLASS 4100 - Female, 9 & not over 12mths  
 CLASS 4101 - Female, over 12 & not over 14mths  
 CLASS 4102 - Female, over 14 & not over 16mths  
 CLASS 4103 - Female, over 16 & not over 18mths  
 CLASS 4104 - Female, over 18 & not over 19mths  
 CLASS 4105 - Female, over 19 & not over 20mths  
 (S4106) - JUNIOR CHAMPION FEMALE  
 (S4107) - RESERVE JUNIOR CHAMPION FEMALE  
 CLASS 4108 - Female, over 20 & not over 24mths  
 CLASS 4109 - Female, over 24 & not over 30mths  
 CLASS 4110 - Female, over 30 & not over 36mths  
 CLASS 4111 - Female, over 36mths  
 (S4112) - SENIOR CHAMPION FEMALE  
 (S4113) - RESERVE SENIOR CHAMPION FEMALE  
 (S4114) - GRAND CHAMPION FEMALE  
 CLASS 4115 - Bull, 9 & not over 12mths  
 CLASS 4116 - Bull, over 12 & not over 14mths  
 CLASS 4117 - Bull, over 14 & not over 16mths  
 CLASS 4118 - Bull, over 16 & not over 18mths  
 CLASS 4119 - Bull, over 18 & not over 19mths  
 CLASS 4120 - Bull, over 19 & not over 20mths  
 (S4121) - JUNIOR CHAMPION BULL  
 (S4122) - RESERVE JUNIOR CHAMPION BULL  
 CLASS 4123 - Bull, over 20 & not over 24mths

CLASS 4124 - Bull, over 24 & not over 30mths  
 CLASS 4125 - Bull, over 30 & not over 36mths  
 (S4126) - SENIOR CHAMPION BULL  
 (S4127) - RESERVE SENIOR CHAMPION BULL  
 (S4128) - GRAND CHAMPION BULL  
 CLASS 4129 - Two Bulls, not over 24mths  
 CLASS 4130 - Sire's Progeny  
 CLASS 4131 - Dam's Progeny  
 CLASS 4132 - Breeder's Group  
 (S4133) - BEST EXHIBIT

(S4133A) - RAS of NSW Award of Excellence Medallion for Best Speckle Park Exhibit.

(S4134) - MOST SUCCESSFUL SPECKLE PARK EXHIBITOR  
 (S4135) - BEST MAINTAINED SPECKLE PARK TEAM, two to five head  
 (S4136) - BEST MAINTAINED SPECKLE PARK TEAM, over five head

### **OTHER RECOGNISED BREEDS (Group D)**

The following Breeds with 1 - 19 Exhibits will be judged together in Other Recognised Breeds Category.

BELGIAN BLUE  
 DEXTER  
 DROUGHTMASTER  
 FLECKVIEH  
 GALLOWAYS  
 GELBVIEW  
 LINCOLN RED  
 MAINE ANJOU  
 PIEDMONTESE  
 PINZGAUER  
 ROMAGNOLA  
 SOUTH DEVON  
 SQUARE MEATERS  
 WAGYU

CLASS 5000 - Female, 9 & not over 14mths  
 CLASS 5001 - Female, over 14 & not over 20mths  
 CLASS 5002 - Female, over 20 & not over 30mths  
 CLASS 5003 - Female, over 30mths  
 (S5004) - CHAMPION FEMALE  
 (S5005) - RESERVE CHAMPION FEMALE  
 CLASS 5006 - Bull, 9 & not over 14mths  
 CLASS 5007 - Bull, over 14 & not over 20mths  
 CLASS 5008 - Bull, over 20 & not over 30mths  
 CLASS 5009 - Bull, over 30 & not over 36mths  
 (S5010) - CHAMPION BULL  
 (S5011) - RESERVE CHAMPION BULL  
 (S5012) - BEST EXHIBIT

(S5012A) - RAS of NSW Award of Excellence Medallion for Best Exhibit - Other Recognised Breeds.

## **NOTES**

**NOTES**



Royal Agricultural Society of NSW

# *Membership applications are now open*

**The Royal Agricultural Society of NSW (RAS) has been an influential force in the direction and development of Australian agriculture through competitions, education and events since our foundation in 1822. And every step we have taken has been with our Members by our side. Our Members are as much a part of our history as our founders and we wouldn't exist without them.**

Become a Member of the RAS and enjoy a discount on entry fees at the Sydney Royal Cattle Show plus receive:

## **Year Round Benefits**

- Reciprocal privileges to selected games at Stadium Australia (previously ANZ Stadium)
- Access to various discounts and special offers all year round
- The RAS Times magazine delivered three times a year. Informative and entertaining, this magazine includes valuable membership information

## **Showtime Benefits**

- Unlimited entry for the duration of the Show
- Purchase Member Reserve wristbands\* so that you can bring along family and friends to access members areas
- Purchase up to three (3) Guest Card's at \$101 each for unlimited entry including access to the Members facilities
- Access to Members Dining, Entertainment and seating areas in GIANTS Stadium and Woodchop Stadium
- Access to Members Facilities including Lounge area, Customer Service, Cloak Room, Parents' Room, Free Wi-Fi within the Members area and buggy service for transporting less mobile Members
- Purchase discounted ride coupons from the Members Desk at GIANTS Stadium every day of the Show
- Access to Members only preview night

**A joining fee of \$50 applies**

**To take advantage of this special offer, go to [www.rasnsw.com.au/membership](http://www.rasnsw.com.au/membership) or call 02 9704 1144 and quote the promo code: CATTLE22**

No joining fee for junior or youth categories. Your membership must be active prior to submitting competitor entries to receive Exhibitor discount. RAS Membership is non-refundable.

\* Subject to COVID 19 restrictions

Please note: Conditions apply to some reciprocal benefits and may exclude some events at participating venues.

To find out more information please visit [www.rasnsw.com.au/members](http://www.rasnsw.com.au/members) or call 02 9704 1144.

